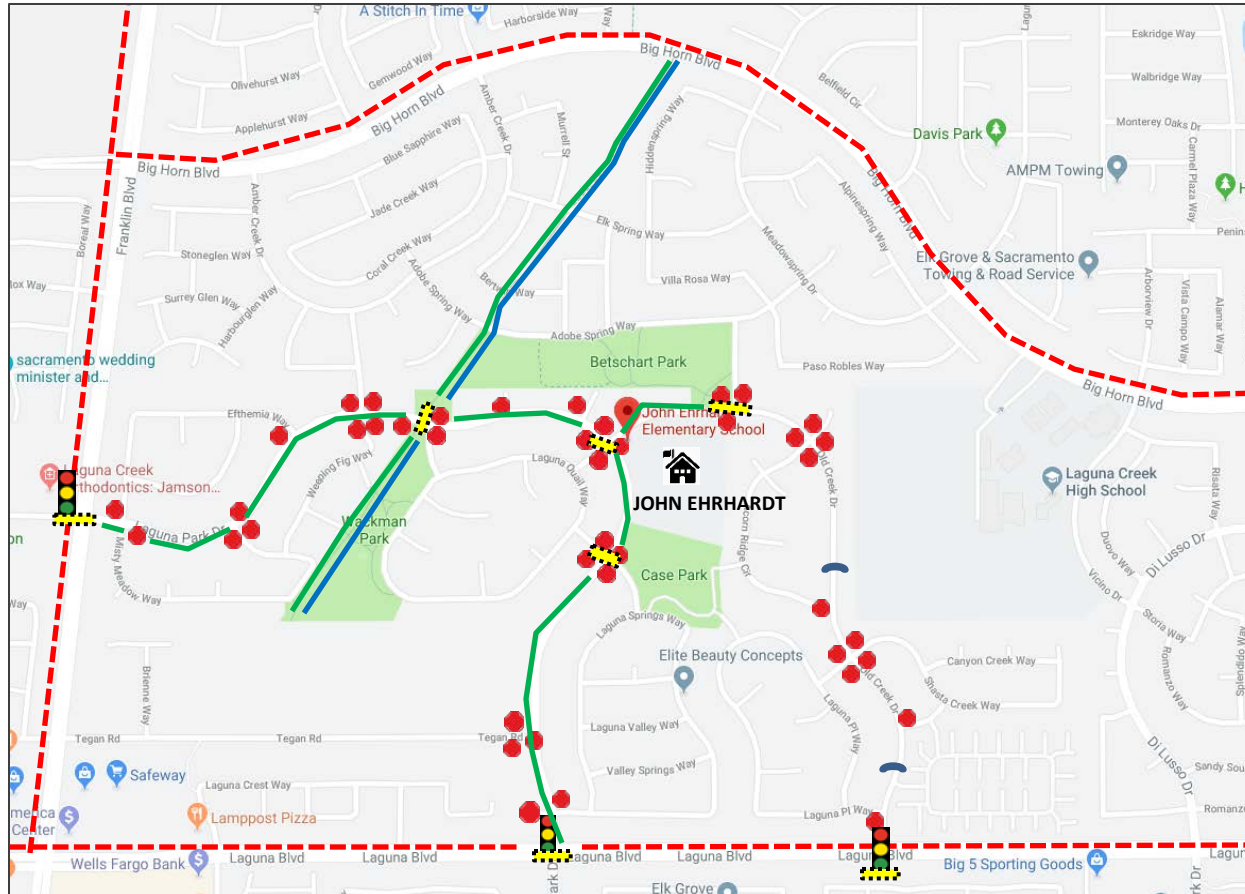




John Ehrhardt Elementary School

Safe Routes to School Map



	Busy Road – Be Alert!		Parks
	Dedicated Bike Lane		Crosswalks w/STOP signs
	Trails		STOP signs only
	Signalized Crossing		Speed Bump

Be Active & Safe!

Walking

- Walk on sidewalks.
- Watch for cars pulling out of driveways and stop to make sure they see you.
- Always cross the street where there is a crosswalk or a stop sign (even if you have to walk a little farther, it is safer).
- At street crossings, stop 3 ft. from the curb.
- **Look left, right, and left again before crossing.**
- Make eye contact with drivers before crossing.
- Do not trust that cars will always obey the rules of the road and stop for you. **You must decide when it is safest to cross.**
- Walk. Don't run across the street.
- Do not use electronic devices when walking to school (e.g., cell phones, music players).

Biking

- Always wear a properly fitted bike helmet.
- Ride on the street in the SAME DIRECTION as cars are traveling.
- Obey all traffic signs and signals; this means stopping at stop signs and/or crosswalks when walkers are present.
- Be alert and scan parked cars along your route. Look to see if there are people in cars who might open their door or pull out in front of you.
- Consider walking your bike on the sidewalk when you are near school to avoid crowded car traffic and walkers.

Ehrhardt Elementary Vehicle Drop-off & Pick-up Procedures

Safety is the highest priority at Ehrhardt Elementary and within Elk Grove Unified School District. Following the procedures below will help to keep your school community safe when you transport your child to/from the instructional day. It is the shared responsibility of staff, parents, students, and neighborhood residents to act with care and concern for others around the school site.

- Ehrhardt is a school that has limited options for student dropoff and pickup due to the age of the school compared to the size of its student population. At some point in the next few years, the school will likely receive a renovated dropoff zone and upgraded parking. Until then, we all must work together to keep our children and the surrounding neighborhood safe with the resources we currently have.
- The primary school auto dropoff zone is along Case Park where signs indicate: "PASSENGER LOADING ONLY: 7 AM to 3 PM." This is NOT a parking area. Parents must remain in their car at all times. Parents may line up in their cars to drop off students along Laguna Park Drive, as well as just southeast on Red Dog Creek Drive.
- Pull forward as far as you can to the front of the drop-off zone before allowing your child to exit your vehicle. *Make sure your child is ready to exit your vehicle in a quick and efficient manner when you enter the drop-off zone.*
- Double parking whether the car is occupied or not is not permitted even to drop off or pick up your child. *California Vehicle Code 22500*
- U-turns are not permitted in a residential district when vehicles are approaching within 200 feet which is the case during school arrival and dismissal times. *California Vehicle Code 22103*
- The BEST option is to walk or bike to school if at all possible. Walking and biking decreases traffic congestion around the school site. Nearby Case Park is a possible remote dropoff location for students. They can walk from there to the school.
- The NEXT BEST option is to park a block or more away from the school in the neighborhood and walk your child in to school.



Courteous Driving

- Be alert for children walking and biking to school.
- Children have a narrower field of vision than adults and often cannot accurately judge distance and speed, and are more likely to dart out into the street.
- Always drive slower (25 MPH or less) around the school during peak arrival and dismissal times.
- Do not drop children off in the middle of the parking lot or street. Always drop them off at the curbside.
- Do not stop inside of or block visibility of crosswalks.
- Do not park at the very end of street blocks; it makes it hard for walkers to see and be seen at crossings.
- Do not use cell phones or other hand-held electronic devices while driving.

Visit EGUSD Safe Routes to School

<http://blogs.egusd.net/saferoutes/>

