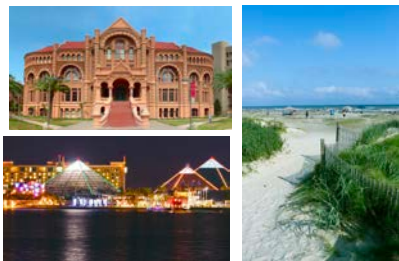




utmb

# Health

MBET: The Biophysics Graduate Program at  
the University of Texas Medical Branch  
(UTMB) Galveston, Texas



UTMB is located on Galveston island ~1 hour drive south of Houston. Galveston is a major travel destination for much of Texas is known for its beaches, sun, and seafood.



Cryo-EM: Our new Krios Titan EM station came on line in 2019 and offers high throughput, high resolution data collection



X-ray crystallography: We have two X-ray stations for collecting single crystal data and a low angle x-ray scattering station for solution studies.



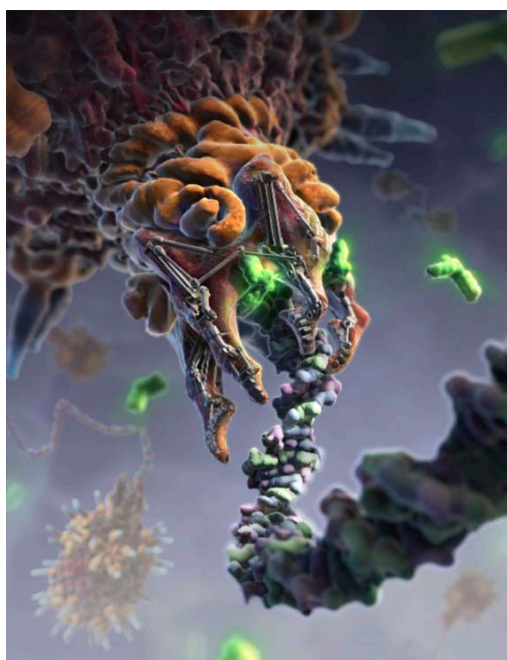
NMR: We have 3 NMR spectrometers - each equipped with cryoprobes for multidimensional heteronuclear experiments.



Solution studies: SCSB maintains a wide range of biophysics equipment; Crystallization robots, ITC, SPR, fluorimeters, CD, and an analytical centrifuge.



Computational studies: In addition to large computer arrays at UTMB, SCSB also has access to the 6,400 computational nodes at the Texas supercomputer facility, TACC.



## Faculty

Werner Braun - Computational chemistry of biomolecules  
Kyung (Kay) Choi - Cryo-EM and crystallography on RNA virus replication and infection  
Matthieu Gagnon - Cryo-EM and crystallography on ribosome structure and function  
Junji Iwahara - NMR and solution biophysics on protein/DNA recognition and interactions  
Petr Leiman - Cryo-EM and crystallography on bacterial and phage injection systems  
Marc Morais - Cryo-EM and crystallography on phage ATP-driven packaging motors  
Andreas Oberhauser - Atomic force microscopy on protein responses to mechanical forces  
Monte Pettitt - Computational methods to analyze DNA characteristics and protein dynamics  
Krishna Rajarathnam - NMR and solution biophysics on chemokine/GPCR interactions  
Gabrielle Rudenko - Crystallography and solution biophysics on synaptic proteins  
Rovshan Sadygov - Computational and MS analysis of proteostasis and systems biology  
Thomas Smith - Cryo-EM and crystallography on viruses and enzymes  
Stanley Watowich - Structural studies on enveloped viruses and drug design  
Whitney Yin - Cryo-EM and crystallography on mitochondrial DNA oxidative damage and repair

## Contact

Monte Pettitt - SCSB Director (mpettitt@UTMB.EDU)  
Thomas Smith - MBET Director (thosmith@UTMB.EDU)  
SCSB - <https://scsb.utmb.edu/>  
MBET - <https://www.utmb.edu/mbet/home>