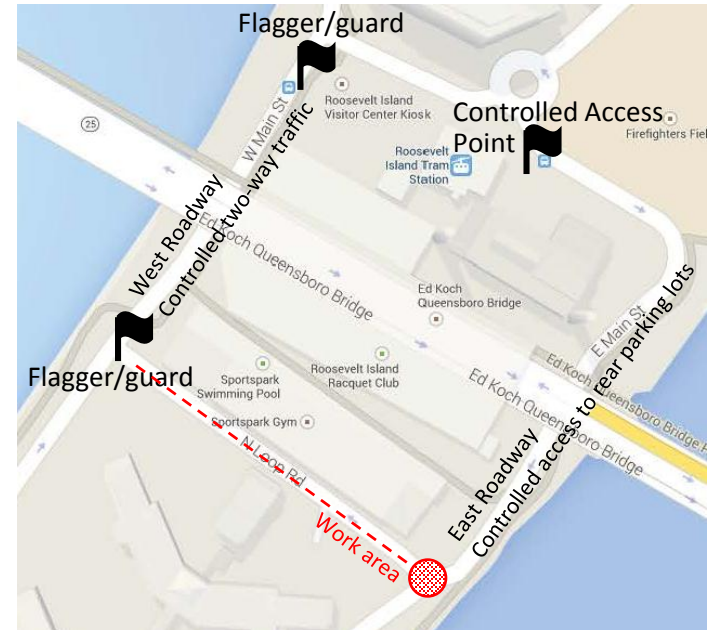


Traffic Plan – Cornell Tech

Early May– Late May
(NW corner underway)



Late May – Mid June
(NE corner underway)



Regular traffic, including buses, does not circulate south of Tram Road.

East Roadway

- Controlled two-way traffic is permitted on the East Roadway. Authorized vehicles are limited to those servicing Four Freedoms Park, Southpoint Park, and Cornell Tech, as well as access to the rear parking lots behind Sportspark and the Roosevelt Island Racquet Club. Emergency vehicles will always have access. Tishman Construction to provide flagger/guard.

West Roadway

- Vehicles (up to the size of a passenger van) heading to Roosevelt Island Racquet Club and Sportspark can use the roadway for drop-off and pick-up only. Vehicles will be able to turn around in the drop-off area. No street parking will be available. Controlled access point to be staffed by Tishman Construction and/or RIOC.

Regular traffic, including buses, does not circulate south of Tram Road.

East Roadway

- Authorized vehicles accessing the rear parking lots at Sportspark and the Roosevelt Island Racquet Club are permitted on the East Roadway. Controlled access point to be staffed by Tishman Construction and/or RIOC.

West Roadway

- Controlled two-way traffic is permitted on the West Roadway. Authorized vehicles must be associated with Four Freedoms Park, Southpoint Park, Cornell Tech, Sportspark, or the Roosevelt Island Racquet Club. No street parking will be available. Emergency vehicles will always have access. Tishman Construction to provide flagger/guard.