

Mac VPN Global Portal Windows VPN Global Portal

From the Google Chrome browser, download the VPN client by clicking on the following link.

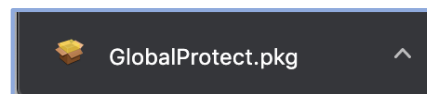
<https://vpn.sienaheights.edu>.

Log in using your **Siena Heights Credentials**.

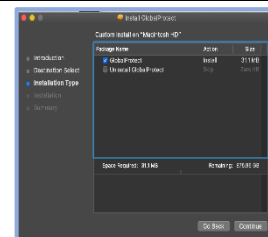
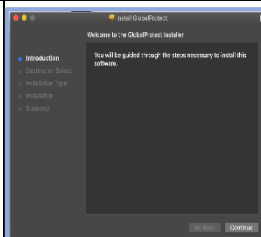
Username: [your username](#)

Password: your mysiena password

Next, click on the **login button**. Click on the only, **Download Mac Global Protect agent link**. From the **lower-left corner** of the Google Chrome web site tap on the **client** download, upon completion.

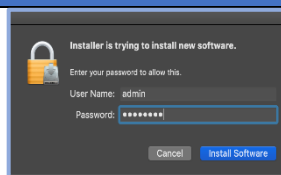


Begin the install and click on the **Continue** button from the **GlobalProtect** menu. Next, click on the **continue button**, to install on your **Mac Hd**. The last menu will be the Custom Install on the MacHD, click on the **Continue** button, and then **install**, to complete the installation.



Installation Secure Setup VPN

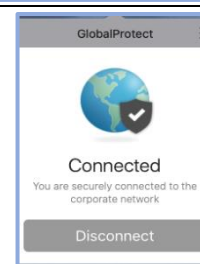
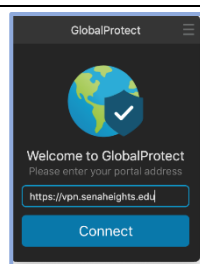
Next, the **Installer** menu message is trying to install new software. Type in your **user** or **admin name** and password from your Mac computer and click on the **Install Software** button.



The System Extension Blocked, click on the **Open security Preferences** button, to allow the Software to be installed on your computer, and from the **Security & Privacy** icon, under the **General** tab.



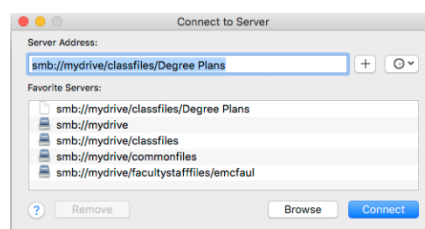
On the top right corner of your mac, is the Global connect which will look like a world icon, click on the icon one time and enter the **portal address**, vpn.sienaheights.edu, and then click on the **connect** button.



Next, type in your **Username** and **Password**, from your mysiena account, and then **click on the connect** button.

Mapping your Sienanet Drive to your Mac computer

Once you have connected to the **Global Protect**, on your keyboard, simultaneously, then tap on the **Command + K**, and type the following information under the **Connect to Server** menu, open slot. Look into the Illustrations to the right: **smb://mydrive/facultystafffiles/yourusername**, and then click on the **connect** button.



Your username account will appear in the finder open menu. By clicking on your username under the **favorites** section of your finder, the new location is a first-rate way to move, open and save your network files to your network drive. **Network Files** will mount on the desktop, and can be move to the dock, or under the **finder** menu, tap on **applications** and drag your network icons, under the favorite's menu.

