

Redistricting Work Group

REDDING CONSORTIUM FOR EDUCATIONAL EQUITY

DECEMBER 12, 5:00-7:00 P.M.

WARNER ELEMENTARY SCHOOL, LIBRARY

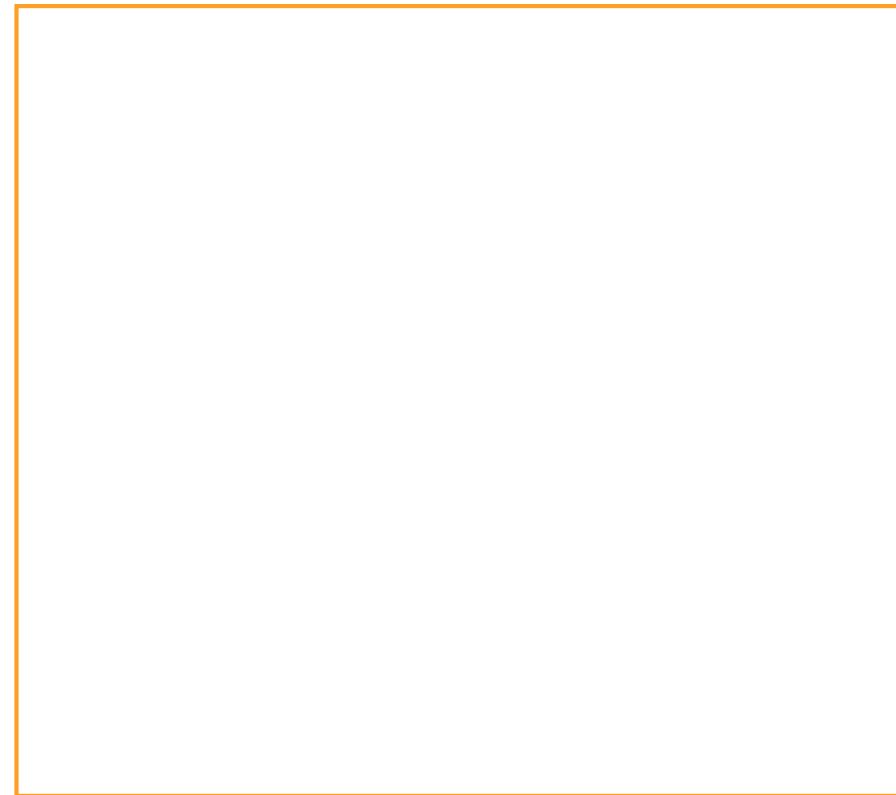
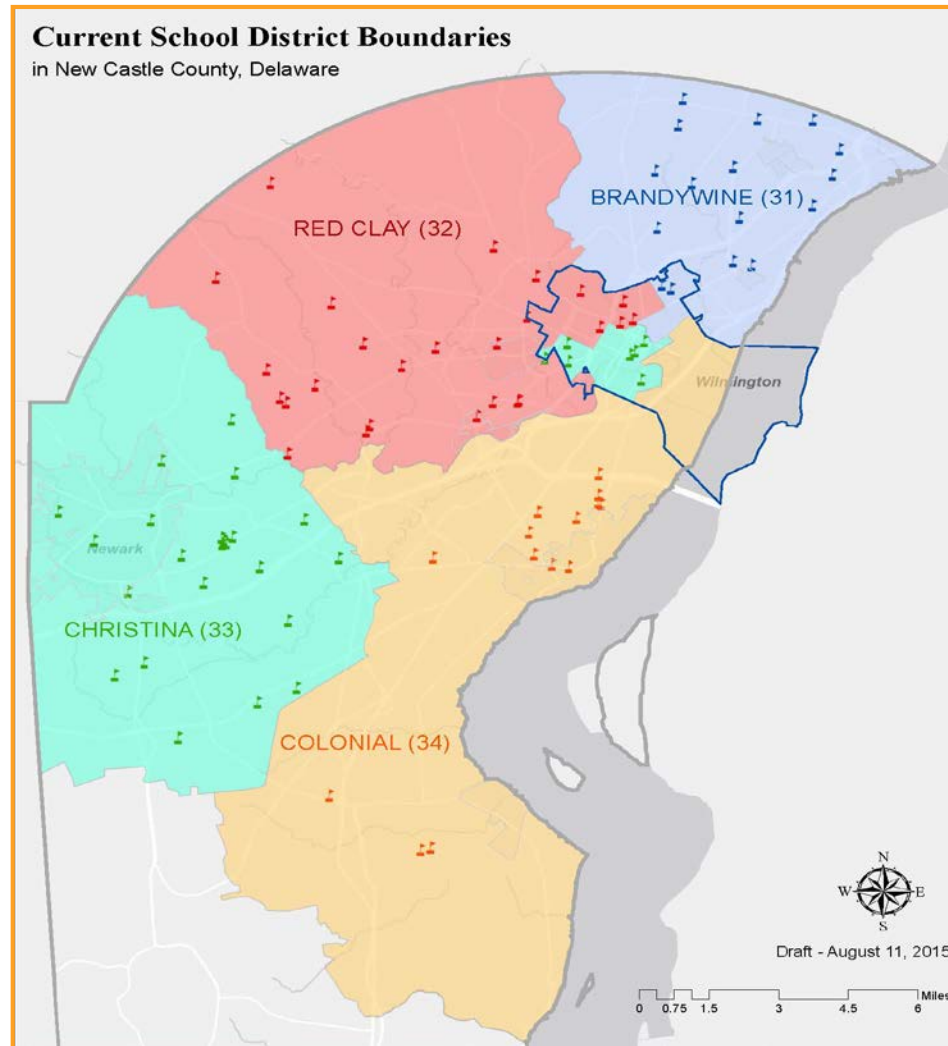
Welcome

Work Group Charge

Redistricting History

WILMINGTON & NORTHERN NEW CASTLE COUNTY, DELAWARE

Northern New Castle County School District Boundaries



Blue line indicates city boundary

Source: Delaware Department of Education

The Challenge of Governance

Schools Located within City of Wilmington Limits, 2019

Schools Located within City of Wilmington Limits			
District	Elementary	Middle	High
Brandywine	Harlan Elementary School	P.S. DuPont Middle School	N/A
Christina	Bancroft Elementary School Elbert-Palmer Elementary School Pulaski Elementary School Stubbs Elementary School	Bayard Middle School	N/A
Colonial	N/A	N/A	N/A
Red Clay Consolidated	Highlands Elementary School Lewis Dual Language Elementary School Shortlidge Academy Warner Elementary School	Cab Calloway School of the Arts*	Delaware Military Academy** Cab Calloway School of the Arts* Charter School of Wilmington**
New Castle County Vocational Technical (NCC Vo-tech)	N/A	N/A	Howard High School of Technology
State Authorized Charter Schools (Grade Levels Vary) within City of Wilmington Limits			
EastSide Charter School Edison Charter School First State Montessori Academy Freire Charter School		Great Oaks Charter School Kuumba Academy La Academia Antonia Alonso	
Additional State-Authorized Charter Schools Serving Wilmington Students			
Design Thinking Academy Early College High School at Delaware State University First State Military Academy		Gateway Lab School Las Américas ASPIRA Academy Odyssey Charter School	

Notes

Independent governing units are bolded.

This table does not include alternative schools located in the city.

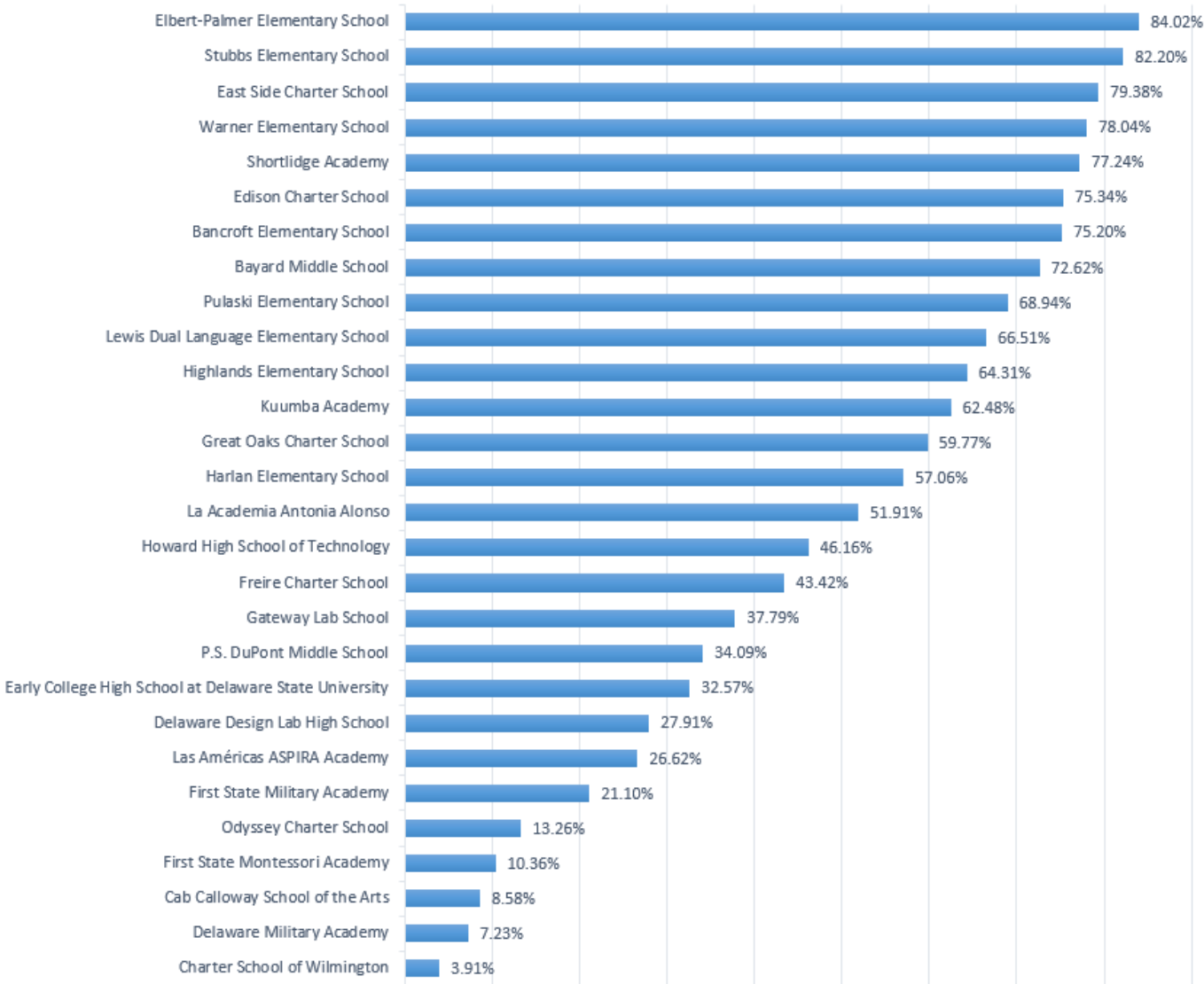
*Magnet School

** Charter schools authorized by Red Clay Consolidated School District

Source: [Status of Public Education for City of Wilmington Students 2016–17 School Year Data Report April 2018](#)

City of Wilmington Schools

Percentage of Low-Income Enrollment in Wilmington Schools in 2018-19



Source: Delaware Report Card, Delaware Department of Education

Wilmington, DE Education Historical Timeline—Highlights

1954 Brown vs. Board of Education

Separate but Equal is unconstitutional; desegregation, “with all deliberate speed,” is now the law of the land

1954-1974

No government action taken in Delaware to implement desegregation

1974 U.S. District Court Declares Unitary System

11 districts combined to one unitary system to achieve desegregation in northern New Castle County

Wilmington, DE Education Historical Timeline—Highlights, Cont.

1980-81 Four Districts are Created & New Castle County Tax District Created

The General Assembly (GA) passes law prompting State Board to create four districts in New Castle County; court upholds

1995-96 Court-ordered Federal Supervision of Desegregation ends

Busing continues largely unchanged

Delaware General Assembly formally amends the Delaware state constitution to abolish separate education system

Wilmington, DE Education Historical Timeline—Highlights, Cont.

1995-96 Charter School Legislation & School Choice Program

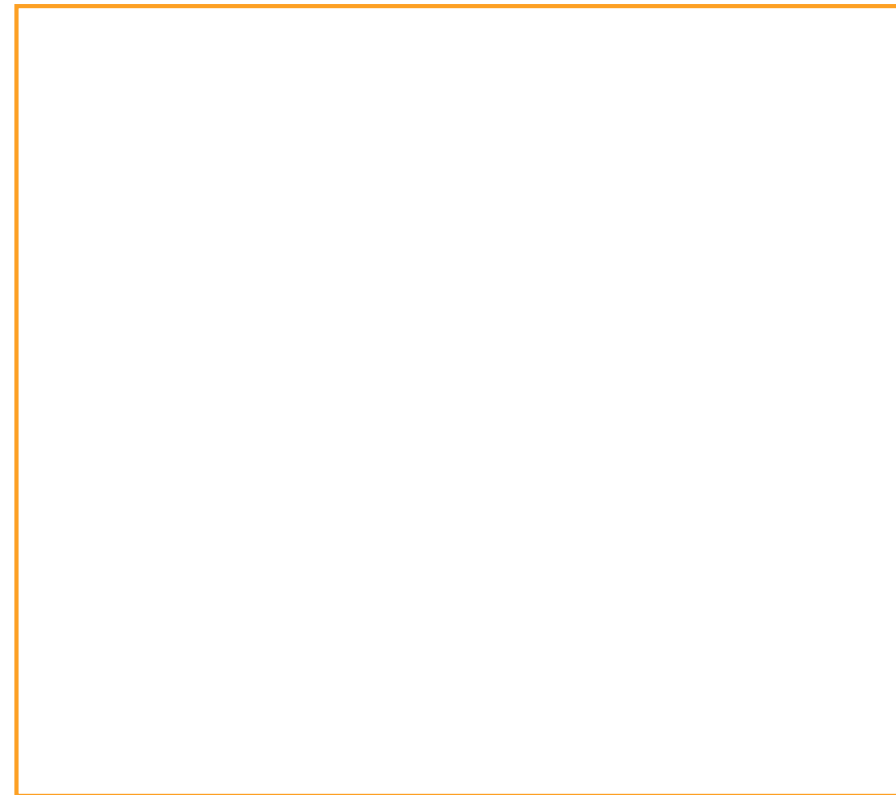
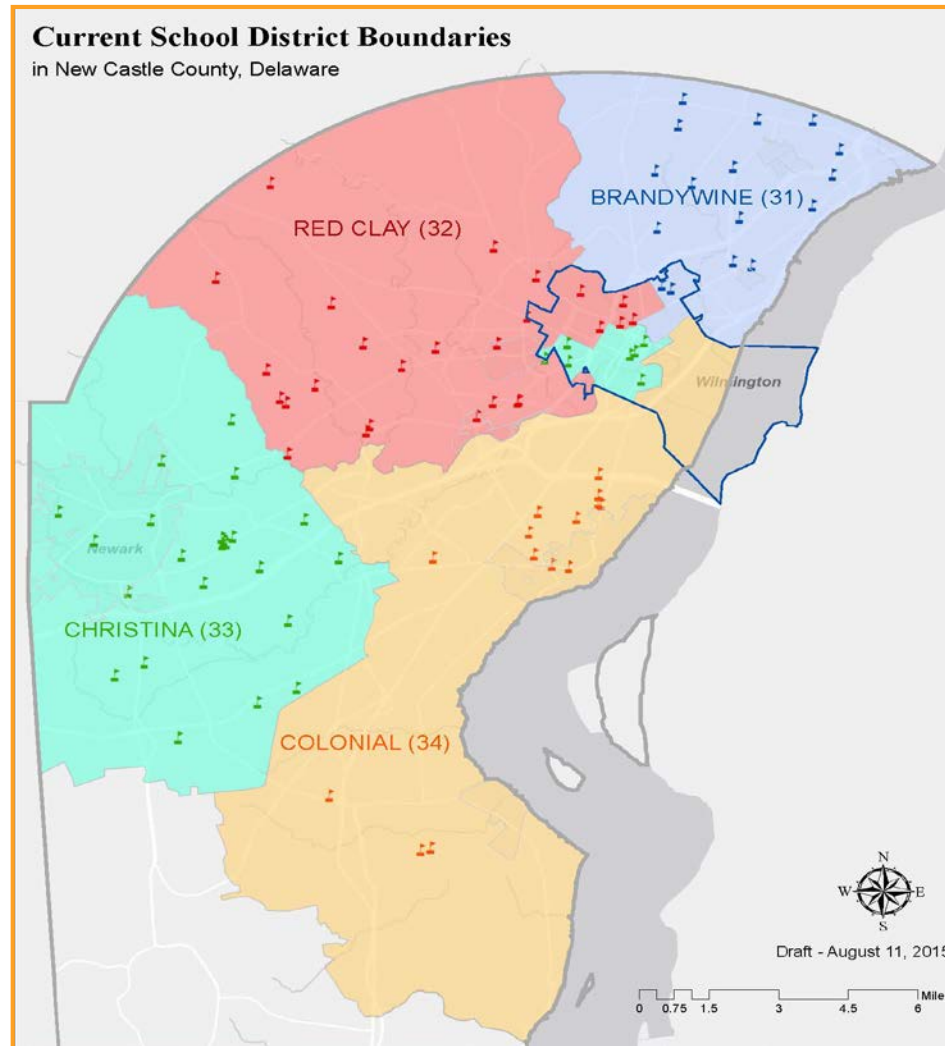
GA passes legislation allowing charter schools

Delaware School Choice Program is approved (partly a response to busing)

2000 Neighborhood Schools Act

2001-2019 Five Groups Attempt to Address Redistricting and Equity in Public Education

Northern New Castle County School District Boundaries



Blue line indicates city boundary

Source: Delaware Department of Education

Redding Consortium Legislation

SENATE BILL 148 & HOUSE BILL 222

Senate Bill 148 & House Bill 222

Senate Bill 148:

- Creates the Consortium
- Provides overarching mandates
- Establishes membership

House Bill 222:

- Provides requirements for the redistricting plan
- Establishes timeline for redistricting plan, process, and implementation

House Bill 222—Specifics

The recommendation and plan developed by the Consortium for presentation to the State Board of Education **must include all of the following**:

1. The orderly and minimally disruptive reassignment of students affected by the boundary change and the reassignment of governance responsibilities.
2. Implications for educators, administrators, and other personnel that may lead to equitable adjustments to local collective bargaining agreements.

House Bill 222—Specifics

3. Recommendations on resources that will be required, from state, district, and local sources, to support the redistricting transition and provide for the effective ongoing education of all affected students, and for the support of schools with high concentrations of low income students and English language learners.
4. Student transportation.
5. Distribution of capital assets and financial obligations or a process for such distribution.

House Bill 222—Specifics

6. Engagement of educators, staff, parents, district personnel, and community members throughout the transition.
7. Directives for improving secondary education options for City of Wilmington students, such as the provision of additional secondary schools.
8. Redrawing of district boundaries in Wilmington and northern New Castle County to better serve the educational interests of all students, including reducing the concentration of low-income students and improving educational services and supports for English Learners and other students at risk.

House Bill 222—Specifics

9. An assessment of the educational needs of City of Wilmington students and the resources required to meet those needs.
10. A stipulation that the funding statewide and locally will facilitate effective implementation of the proposed comprehensive plan in a manner that will improve the educational outcomes for all of the students impacted by that plan.
11. A timetable for implementing each element of the redistricting plan and the designated responsibility for carrying out responsibilities until the date of full implementation.

House Bill 222—Specifics

12. A process for the ongoing monitoring and evaluation of the educational impacts and outcomes of implementation, which will include an annual report by the Consortium to the Governor, the General Assembly, the Secretary of Education, and the State Board of Education.
13. The plan must permit students to continue their attendance at the school they attended prior to the boundary change with tuition payments made by the sending district as provided in Chapter 6 of this title until such time as the pupils complete the grade levels offered in that school.

Redistricting Timeline—Key Dates

The Consortium's recommendation and plan must be **reviewed and acted upon by the State Board of Education** on or after **January 1, 2021** and no later than **April 1, 2021**

The plan must take effect on or after **July 1, 2023** and no later than **July 1, 2025**.

Redistricting Timeline—2019-2021

December 2019-April 2020: Redistricting Work Group meets to deliberate redistricting options and details

April 2020: Redistricting Work Group presents suggested path forward for redistricting to entire Consortium. Consortium members provide feedback

May-July 2020: Redistricting Work Group and Consortium determine final path forward for redistricting

Redistricting Timeline—2019-2021

August–September 2020: Consortium presents to all four school district boards on the redistricting planning process. (Note: School boards will be engaged much earlier than this step)

September–November 2020: Consortium conducts town hall meetings in all school districts involved in the redistricting planning process

September-October 2020: Consortium presents to the State Board of Education (State Board) on the redistricting plan schedule outline, and public record

Redistricting Timeline—2019-2021

Nov–December 2020: Convene approximately six public hearings

December 2020: Consortium meets to review possible revisions to draft plan and approves plan for submission to the State Board

Goal date, December 31, 2020: Consortium presents and submits final plan to State Board

March 31, 2021: Consortium and State Board authority ends

Redistricting Options

A REVIEW OF SEVEN OPTIONS

Three-District Option

Description: Boundaries for the Christina School District (CSD) would no longer include City of Wilmington residents and would include only areas in what is now the western portion of the district. The Red Clay, Brandywine and Colonial District boundaries would continue to include areas in the City of Wilmington.

The Christina School District is one of only a handful of geographically disconnected school districts in the nation, with its two sections separated by 18 miles. Nearly four decades of experience has demonstrated that this configuration has struggled to meet the educational needs of its City of Wilmington students. It also has posed challenges for the overall operation and performance of the district.

Two District Option

Description: Boundaries of both Christina and Colonial School Districts would no longer include the City of Wilmington. Residents would now receive public education services from the Red Clay and Brandywine school districts, charter schools and the vo-tech district. This option would reduce the number of traditional school districts serving Wilmington from four to two.

One possible model, named the River Plan, has been developed in the past. This plan would move the residents living east of Market Street into the Brandywine School District and residents living west of Market Street into the Red Clay School District. Other boundaries are possible.

Wilmington District

Description: Reestablish a Wilmington school district that would serve all City of Wilmington residents.

This option would restore local community control of education to Wilmington residents. This option might also consolidate charter school approval and oversight as a responsibility in the new Wilmington School District for some or all of the charter schools operating in the City of Wilmington.

Northern New Castle County Unified District

Description: Create a single school district serving northern New Castle County comprised of the City of Wilmington, the City of Newark, and all suburbs north and west of the city.

The new district would provide an overarching educational administrative unit for all publicly funded education units, that is public school districts and charter schools operating in Northern New Castle County. All existing education entities, four districts, vo-tech district, and charter schools, would continue as now constituted. However, all units would be under a higher, county-wide authority.

Northern New Castle County Dual District

Description: Create two school districts for Northern New Castle County. One option would create three districts total in NCC. A northern district would consist of Wilmington as well as the current Brandywine School District and Red Clay. The mid-county district would consist of the current Christina and Colonial districts. Appoquinimink would continue as the southern NCC district.

*A second option would divide New Castle County into east and west. The eastern district would consist of Wilmington as well as the current Brandywine and Colonial districts. The western district would consist of the western part Christina and Red Clay districts. It is possible that some charter schools may change their authorizers.

Alternate Education Zone Models

Typical characteristics or goals:

- Varying governance structures
- Increased school autonomy
- Tailored student, educator and administrator supports
- Access to additional funding typically designated by the General Assembly
- Access to State-allocated capital support
- Access to funding and other resources from private and nonprofit institutions and sources

Stakeholder Engagement

Ideas:

- A representative of New Castle County
- School Board representation
- District Chief Financial Officers
- Parent Organization Members
- Local Teacher Unions
- Students

Please send ideas to Haley Qaissaunee, hqaissa@udel.edu

Next Steps

Public Comment

Closing Remarks

Extra Information

NEW CASTLE COUNTY TAX DISTRICT/POOL

A solid orange horizontal bar at the bottom of the page.

New Castle County Tax Pool

General operations for the Red Clay Consolidated, Christina, Colonial, and Brandywine school districts are primarily funded through **real estate taxes**.

There are two components to the tax rates for these New Castle County School Districts.

One component is the **New Castle County Tax Pool**

- The Tax Pool was established through Delaware Code when the New Castle County School District was divided into the four current districts in 1981.
- The tax rate has remained unchanged since it was set in 1985.

New Castle County Tax Pool

Each of the four districts contributes the first **46.8 cents per \$100** of assessed value as set in Delaware Code, 14 Del Code §1925 and 14 Del Code §1028 (k).

Funds from this pooled revenue are then redistributed based on each district's total Division 1 earned units minus any units earned in Special Schools as calculated by the Department of Education.

The effect of the Tax Pool is that money shifts from some districts to others.

New Castle County Tax Pool

The formula used for this redistribution is antiquated, and the Tax Pool no longer allocates funds equitably nor in accordance with the original intent.

The formula for allocation has not been adjusted to account for students attending charter schools or exercising choice.

Equally important, the formula was frozen for a time when some districts had adjusted for significant enrollment change in special education based on inclusion efforts, while others were in the process of doing so.

New Castle County Tax Pool

The timing of the freeze leaves a significant disparity in the formula where similar students (formerly special school students) are not counted for some districts and not others, which ultimately impacts the percentage of funding each district generates from the pool.

While the system's inequities have been identified by the Department of Education and the districts, the allocation continues to be frozen because correcting it would create an immediate budget problem for one or more districts.