

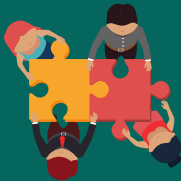
# Why Involve Residents in the Planning Process?

Community members feel more connected to what is build and will want to utilize it more.



Planners can better understand the concerns and needs of the local community.

The feeling of ownership of the recreation infrastructure gives community members an added stake in society.



The final product will better fit the vision of the community.

People with similar interests will have more opportunities to gather at a location convenient to everyone, allowing people to build more social capital.



Acknowledgements:  
Allison Michalowski

**Complete Communities**  
attractive, inclusive, efficient, healthy & resilient pla  
CompleteCommunitiesDE.org

UNIVERSITY OF  
DELAWARE.



Institute for  
Public Administration

