

# STREETSCAPING ELEMENTS

Help to “furnish” a street with functional and aesthetic items that provide amenities and utility to pedestrians.

## SIDEWALKS

foster pedestrian-friendly street systems where pedestrians can experience safety, comfort, accessibility, and efficient mobility.



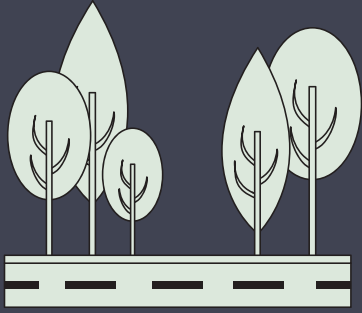
## CURB EXTENSIONS

extend the sidewalk, provide an opportunity for social interaction, and offer a safe refuge for pedestrians crossing streets.



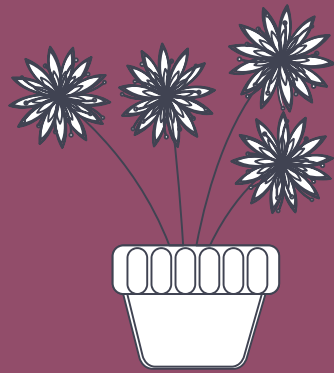
## LANDSCAPED BUFFERS

use trees and plantings to create a visual and noise buffer between pedestrians and vehicles.



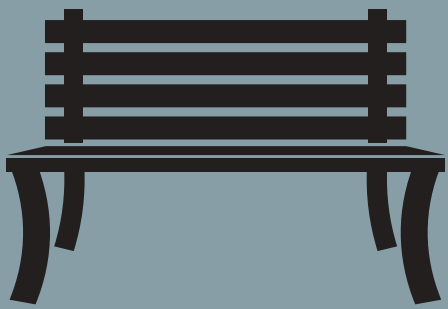
## PLANTERS

add color, texture, and interest to a streetscape.



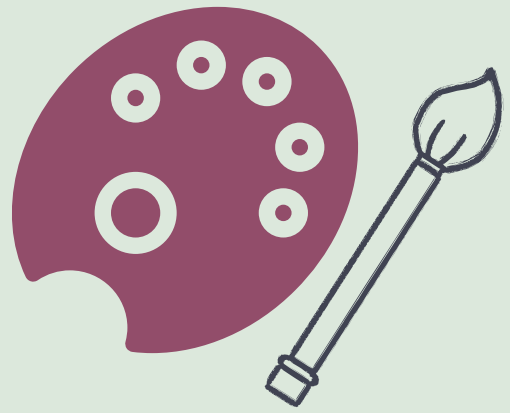
## SEATING

provides places to rest, wait for transit, and socialize with others.



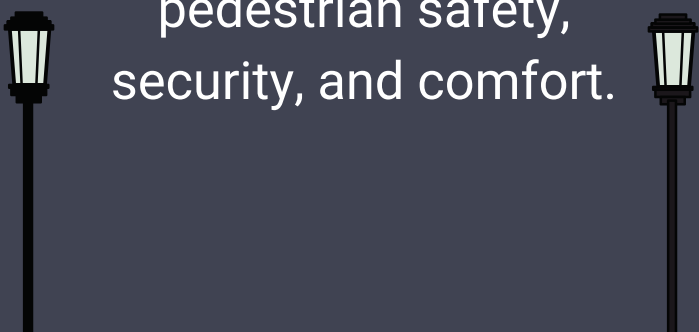
## PUBLIC ART

enhances a sense of place, civic pride, and visual appeal to a public space.



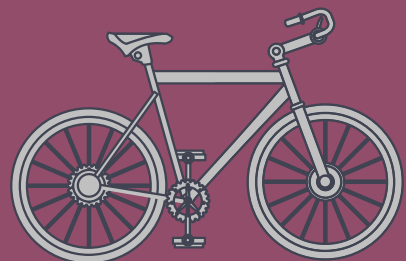
## LIGHTING

increases a sense of pedestrian safety, security, and comfort.



## BIKE PARKING

can be both functional and serve as public art.



Acknowledgements:  
Katherine Freitag  
Marcia Scott  
Sarah Pragg

UNIVERSITY OF  
DELAWARE

Complete  
Communities

attractive, inclusive, efficient, healthy & resilient pla

CompleteCommunitiesDE.org



Institute for  
Public Administration



DeIDOT