

University of Kansas **KKU**
In Process Date:

Lending Articles

ILL Number: -5699308



Call #: **QL461 .R42**

Location: **ans**

Odyssey: **206.107.43.75**

Journal Title: **Reichenbachia /
Staatliches Museum fu"r Tierkunde in
Dresden.**

Email:

Volume: **21** Issue: **24**

Article Exchange

Month/Year: **1983**

Maxcost:

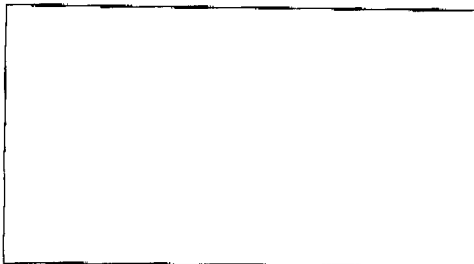
Pages: **141-144.**

KKU Billing: **Exempt**

Article Author: **Anufriev G. A.**

Article Title: **A new species of the
genus Cixidia Fieber, 1866 from the
Soviet Maritime Territory.**

8/3/2012 2:39:26 PM **RAPID**



Paging notes:

___ Call # NOS ___ Call # Title

Book/Volume/Issue/Series NOS
(Circle)

Year ___ ≠ Volume ___

___ Article not found as cited -

Why? _____

Initials _____

ILLiad TN: 1326592



Borrower: RAPID:DLM

Shipping Address:

NEW: Main Library

Staff notes:
OCLC#: 2404786
ISSN#: 0070-7279

Lending String:

REICHENBACHIA

STAATLICHES MUSEUM FÜR TIERKUNDE IN DRESDEN

Band 21

Ausgegeben: 15. Dezember 1983

Nr. 24

A New Species of the Genus *Cixidia* FIEBER, 1866 from the Soviet Maritime Territory (Homoptera, Auchenorrhyncha, Achilidae)

With 9 Figures

G. A. ANUFRIEV

Gorky

Abstract. Description of *Cixidia (Eiptera) kasparyani* sp. n. from the Soviet Maritime Territory which differs from other Far Eastern species of the genus in wholly brownish face irrorated whitish as well as in male genital structure. Key to Far Eastern species of the genus.

There is a new species of the genus *Cixidia* FIEBER, 1866 among the materials of Auchenorrhynchous insects collected in the Soviet Maritime Territory by Dr. D. R. KASPARYAN in 1978. These materials became available for my investigation due to kindness of Dr. A. F. EMELJANOV to whom I express my sincere appreciation. The description of the species is given below. Holotype and paratypes are deposited in the Leningrad Zoological Institute, one paratype is kept in the author's collection.

Cixidia (Eiptera) kasparyani sp. n. (Figs. 1–9)

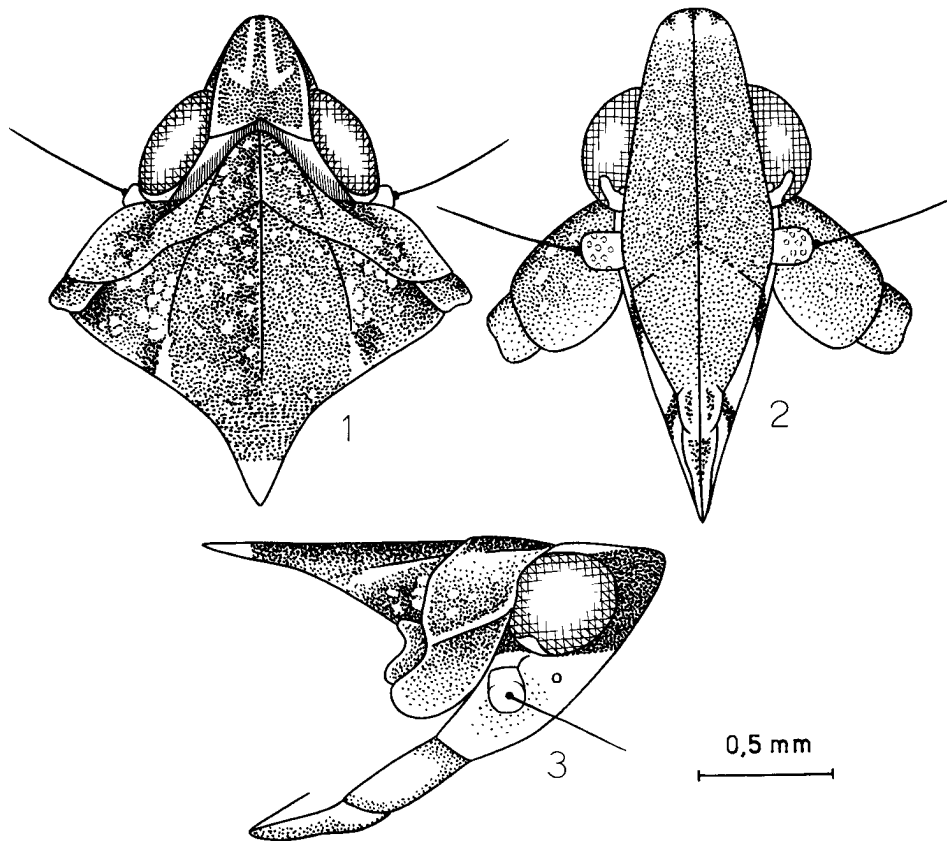
Vertex elongate with parabolical anterior margin; the length of vertex in the middle is nearly equal to the greatest width posteriorly. Frons with the medial carina strong and the lateral margins elevated; clypeus carinate. Pronotum obtusely produced between the eyes. Mesonotal carinae distinct in anterior half and obsolete in posterior one.

Ground colour brown. Vertex with two yellowish-white longitudinal parallel stripes and yellowish-white postero-lateral angles. Frons, pronotum and mesonotum closely irrorated whitish; apex of frons and apical part of mesonotum yellowish-white. Clypeus brownish. The genae, propleuron and mesopleuron yellowish. There is a wide brown band on each temple. Abdomen dark-brown from above and yellowish-brown from below, the segments more or less broadly bordered paler. Legs brown with lighter carinae. Elytrae brown, irregularly marked and mottled grayish-white; veins mottled in the most part and yellowish-white in apical part.

Male genitalia. Pygophore with wide prolongation on ventral side which is truncate and slightly sinuate at apex. Anal tube with nearly parallel sides, slightly broadened to apex; posterior angles protruding and pointed, nearly parallel. Ventral and lateral lobes of aedeagal perianthium approximately of the same length and of the same width. Inner processes of lateral lobes stright and short. Dorsal lobe narrow on its whole length, pointed at apex, with slight medial carina. Penis rods simple, not branched.

Holotype male and 3 paratypes, females: Soviet Maritime Territory, Barabash-Levada, September 2, 1978, KASPARYAN coll.

It differs from other Far Eastern species of the genus [*C. (E.) lapponica* (ZETTERSTEDT, 1840), *C. (E.) ussuriensis* (KUSNEZOV, 1928) and *C. (E.) okunii* (MATSUMURA, 1914)] in brown face irrorated whitish; face of the above mentioned Far Eastern species is purely-



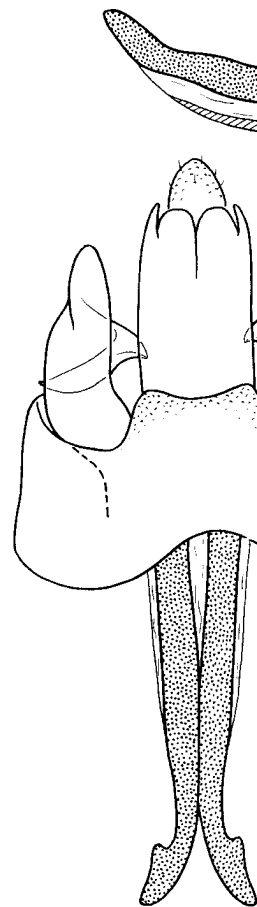
Figs. 1-3. *Cixidia (Epiptera) kasparyani* sp. n., anterior part of body. 1 - from above, 2 - from below, 3 - from side.

yellow, not irrorated, with more or less expressed dark apical band. Male genitalia are different too (compare with figs. in ANUFRIEV, 1969).

Key to Far Eastern species of *Cixidia*

- 1 (6) Face yellow with more or less expressed dark apical band.
- 2 (3) Dark apical band of face is interrupted in the middle.
 - C. (E.) okunii* (MATSUMURA, 1914) ¹⁾
 - Distribution. Japan (Hokkaido) (MATSUMURA, 1914; NAST, 1972).
- 3 (2) Dark apical band of face interrupted, sometimes mottled yellowish.
- 4 (5) Dark apical band of face comparatively wide, of nearly equal width along all length, not mottled yellowish. Ventral and lateral lobes of aedeagal periandrium approximately of the same length. Inner processes of lateral lobes relatively short. Dorsal lobe broad near the base and gradually tapering to the pointed apex. Penis rods branched near apex.
 - C. (E.) lapponica* (ZETTERSTEDT, 1840)

¹⁾ Not seen by the author, included in the key on the basis of S. MATSUMURA's (1914) description.



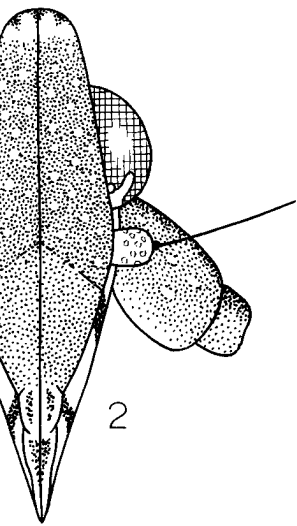
0,5 mm

Figs. 4-5

0,3 mm

Figs. 6-9

Figs. 4-9. *Cixidia (Epiptera) lapponica* (Zetterstedt, 1840). 4 - the same from above, 5 - the same from below, 6 - the same from above, 7 - the same from below, 8 - the same from above, 9 - the same from below.



0,5 mm

of body. 1 - from above, 2 -

cal band. Male genitalia are

Cixidia

kaspariyani (MATSUMURA, 1914) 1)

1914; NAST, 1972).

yellowish.

equal width along all length,

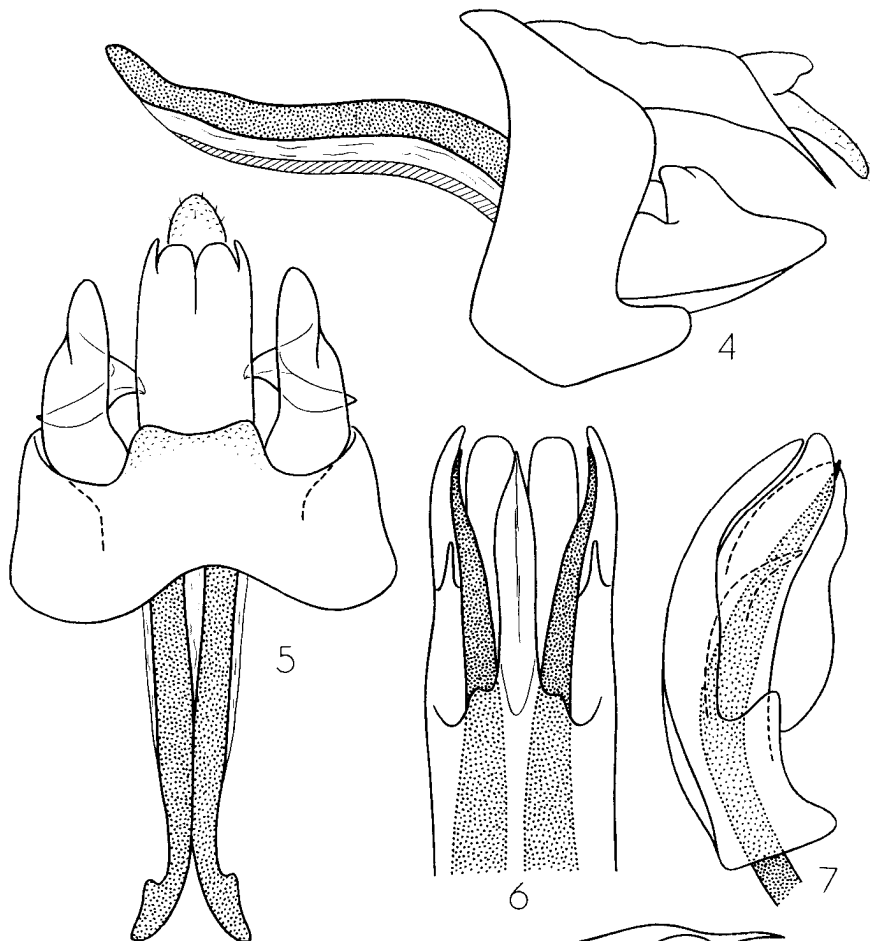
aedeagal periandrium approxi-

lobes relatively short. Dorsal

apex pointed. Penis rods

Reichenbachia (ZETTERSTEDT, 1840)

by S. MATSUMURA's (1914)

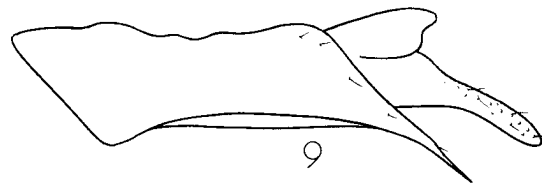
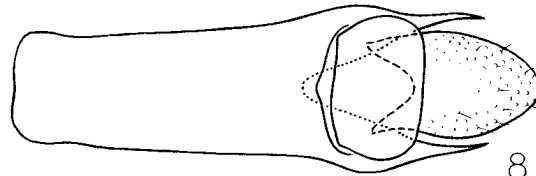


0,5 mm

Figs. 4-5

0,3 mm

Figs. 6-9



Figs. 4-9. *Cixidia (Epiptera) kaspariyani* sp. n., male genitalia. 4 - genital segment from side, 5 - the same from below, 6 - aedeagal apex from above, 7 - the same from side, 8 - anal tube from above, 9 - the same from side.

Male genitalia are figured by G. A. ANUFRIEV (1969). Distribution. Finland, Sweden, USSR (the north of European part, Irkutsk, Tshita and Amur Regions, Soviet Maritime Territory) (ANUFRIEV, 1969; NAST, 1972); it is recorded here from Magadan Region for the first time: 15 km N of Klyopka, July 2, 1975, 9 specimens, E. MATYS coll.

- 5 (4) Dark apical band of face noticeably narrowing in the middle, often mottled yellowish. Ventral lobes of aedeagal periandrium distinctly longer than the lateral ones. Inner processes of lateral lobes relatively long. Dorsal lobe short and broad, widely rounded at apex. Penis rods simple, not branched.

C. (E.) ussuriensis (KUSNEZOV, 1928)

Male genitalia are figured by G. A. ANUFRIEV (1969). Distribution. USSR (Soviet Maritime Territory) (ANUFRIEV, 1969; NAST, 1972).

- 6 (1) Face brownish with whitish irroration. **C. (E.) kasparyani sp. n.** (Figs. 1–9)
Distribution. USSR (Soviet Maritime Territory).

References

- ANUFRIEV, G. A., 1969: Studies on some Palearctic Achilidae (Homoptera, Auchenorrhyncha). — Bull. Acad. Polon. Sci., ser. sci. biol. **17**, 3: 173–178.
MATSUMURA, S., 1914: Beitrag zur Kenntnis der Fulgoriden Japans. — Ann. Mus. Nat. Hungarici **12**: 261–305.
NAST, J., 1972: Palearctic Auchenorrhyncha (Homoptera). An annotated check list. Warszawa: 1–550.

Address of the author:

Dr. G. A. Anufriev, Kujbyshev ul. 37–27, Gorky M–74, USSR 603 074

REIC

STAATLICHE

Band 21

Eine neue Art

In den Sammlungen des Inwalde befinden sich in der *licola* LOEW, 1847 bestimmwürdigerweise von der Leiaufrechten Dank ausspreArt aus Mitteleuropa nichtschriebene Spezies der onFundort Pilam benannt.

Kopf glänzend, silbern beGipfel vor den Augen dieals breit, bestäubt, mit feinvorn gerichteten Haaren. die beiden Basalglieder zusauf der Oberseite mit einelben auf der UnterseiteHaaren. Hinterkopf silberAugen mit einigen (5) gelbHärchen bestehend, die zwund apikal weiß behaart. Ta

Thorax glänzend, silbergratumfläche und mit feinenuwachsen gelbe 2 Notapleur schwarz, mit feinen weißbestäubt, mit feinen weißMakel.

Coxen silbern bestäubt. BeDornen. Knie unscheinbar gelb.

Flügel durchsichtig, die AdLOEW, 1847. Die Adern bhaart. Halteren gelb.

Abdomen schwarz, mit feine