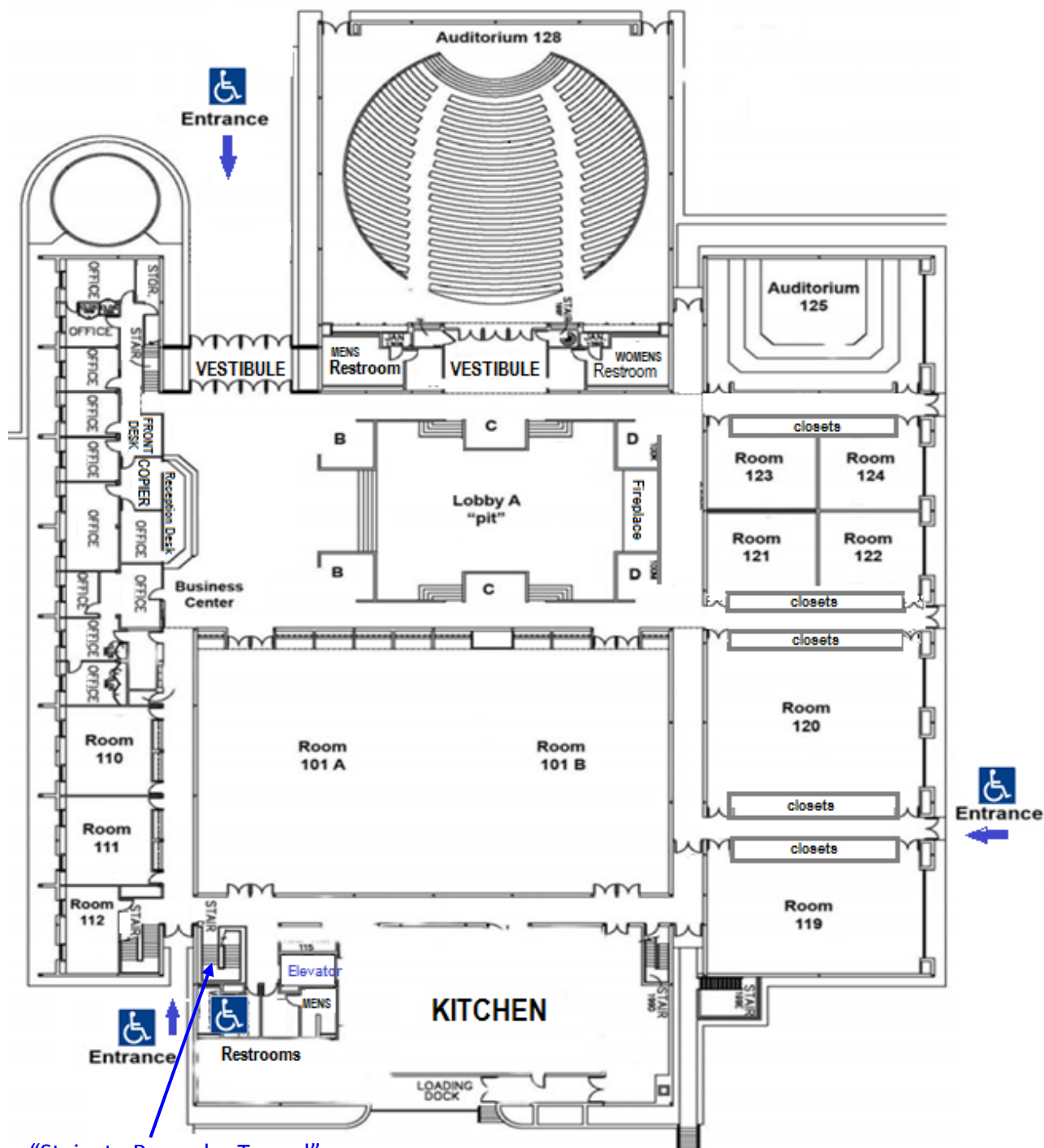




UNIVERSITY OF DELAWARE  
CONFERENCE SERVICES

# CLAYTON CONFERENCE CENTER

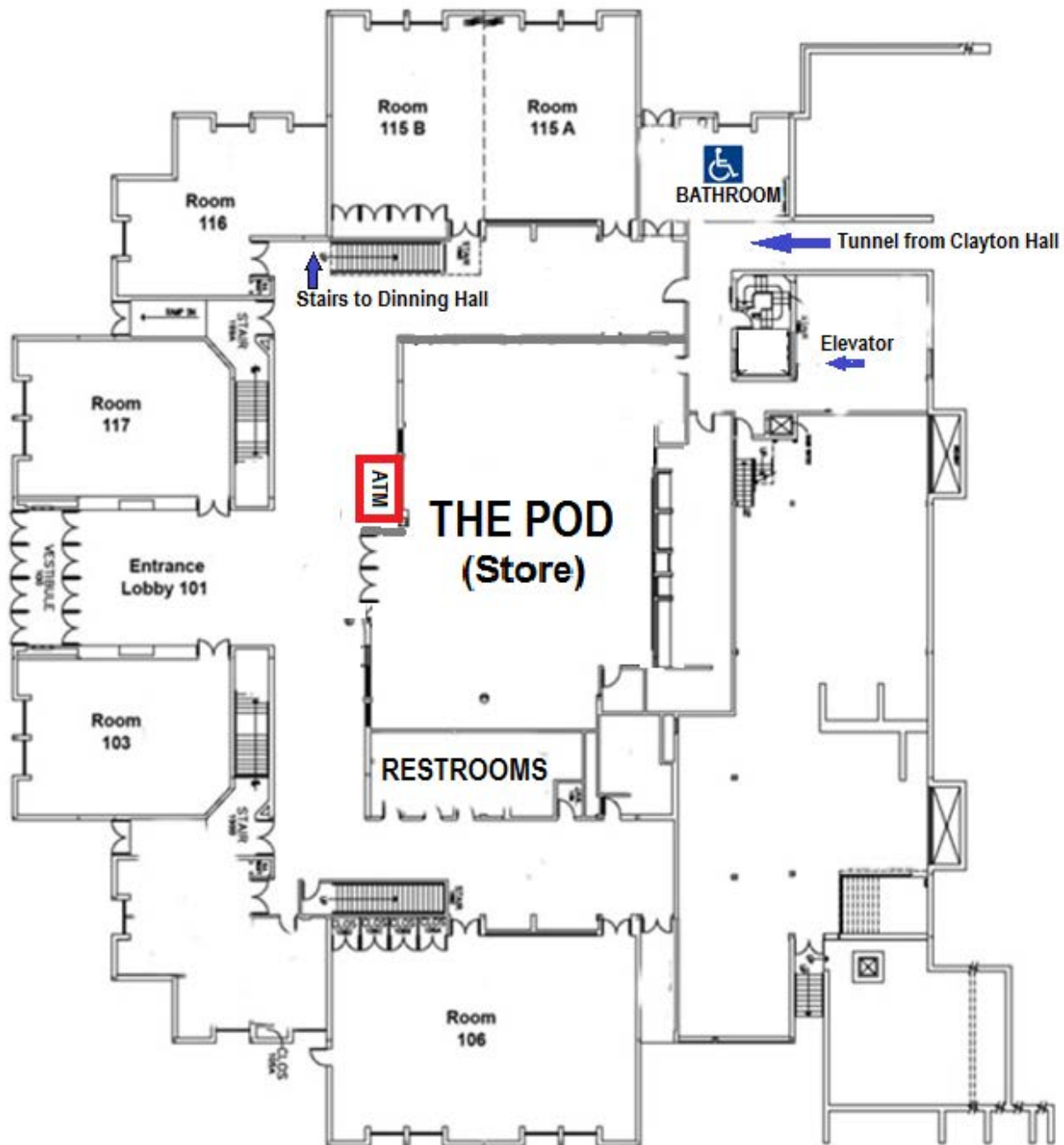


"Stairs to Pencader Tunnel"



UNIVERSITY OF DELAWARE  
CONFERENCE SERVICES

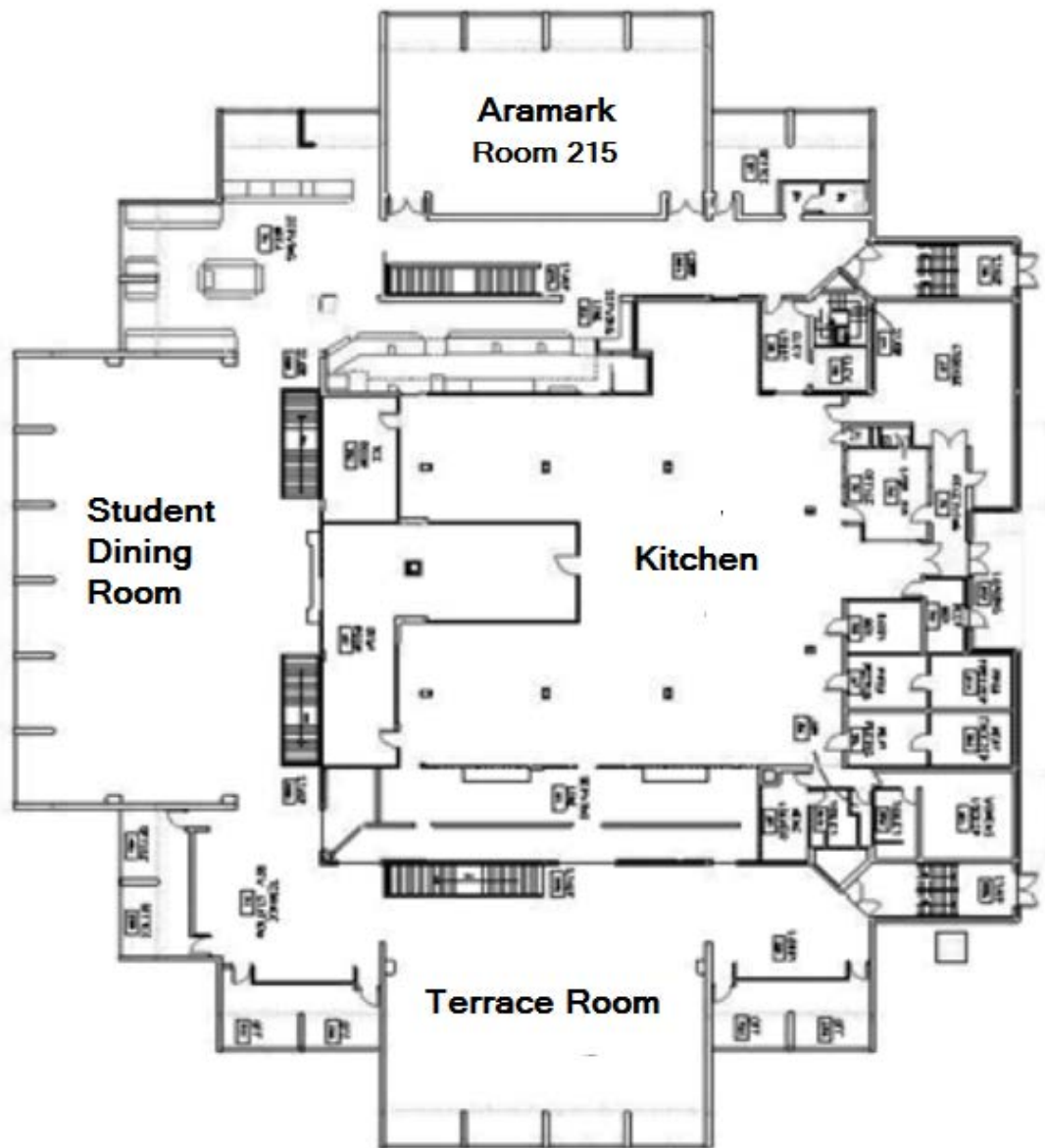
PENCADER CONFERENCE CENTER, 1<sup>st</sup> Floor





UNIVERSITY OF DELAWARE  
CONFERENCE SERVICES

PENCADER CONFERENCE CENTER, 2nd Floor





UNIVERSITY OF DELAWARE  
CONFERENCE SERVICES

## Room Dimensions & Seating Capacity

Dimensions			Capacities			
<b>CLAYTON HALL</b>						
ROOM	LxW	Square Feet	Theater	Classroom	U-Shaped	Banquet
101A	71.8' x 65.4'	4,696	500	200	Flexible	300
101B	35.4 x 65.4'	2,315	300	100	Flexible	160
101A & B	107.2' x 65.4'	7,011	800	300	Flexible	460
110,111	23.6' x 19.5'	460	40	24	15	32
119	48.5' x 31.3'	1,518	100	50	30	100
120	48.5' x 41.8'	2,027	200	75	40	144
121 & 123	25.3' x 20.3'	514	40	24	15	32
122 & 124	22.5' x 20.3'	457	40	24	15	32
125	33' x 50'	1,650	117	--	--	--
128	80' x 77'	6,160	503	--	--	--
213	110.0' x 65.5'	7,205	--	Boardroom 12	--	--
<b>PENCADER</b>						
ROOM	LxW	Square Feet	Theater	Classroom	U-Shaped	Banquet
115A	33.6' x 27.4'	921	90	40	24	72
115B	33.6' x 27.4'	921	90	40	24	72
115A & B	33.6' x 54.8'	1,841	180	80	40	144
103	35.5' x 27'	959	90	45	24	72
106	54.8' x 33.6'	1,841	180	80	40	144
116	39.8' x 22.6'	899	40	24	10	32
117	35.5' x 27'	959	90	45	24	72