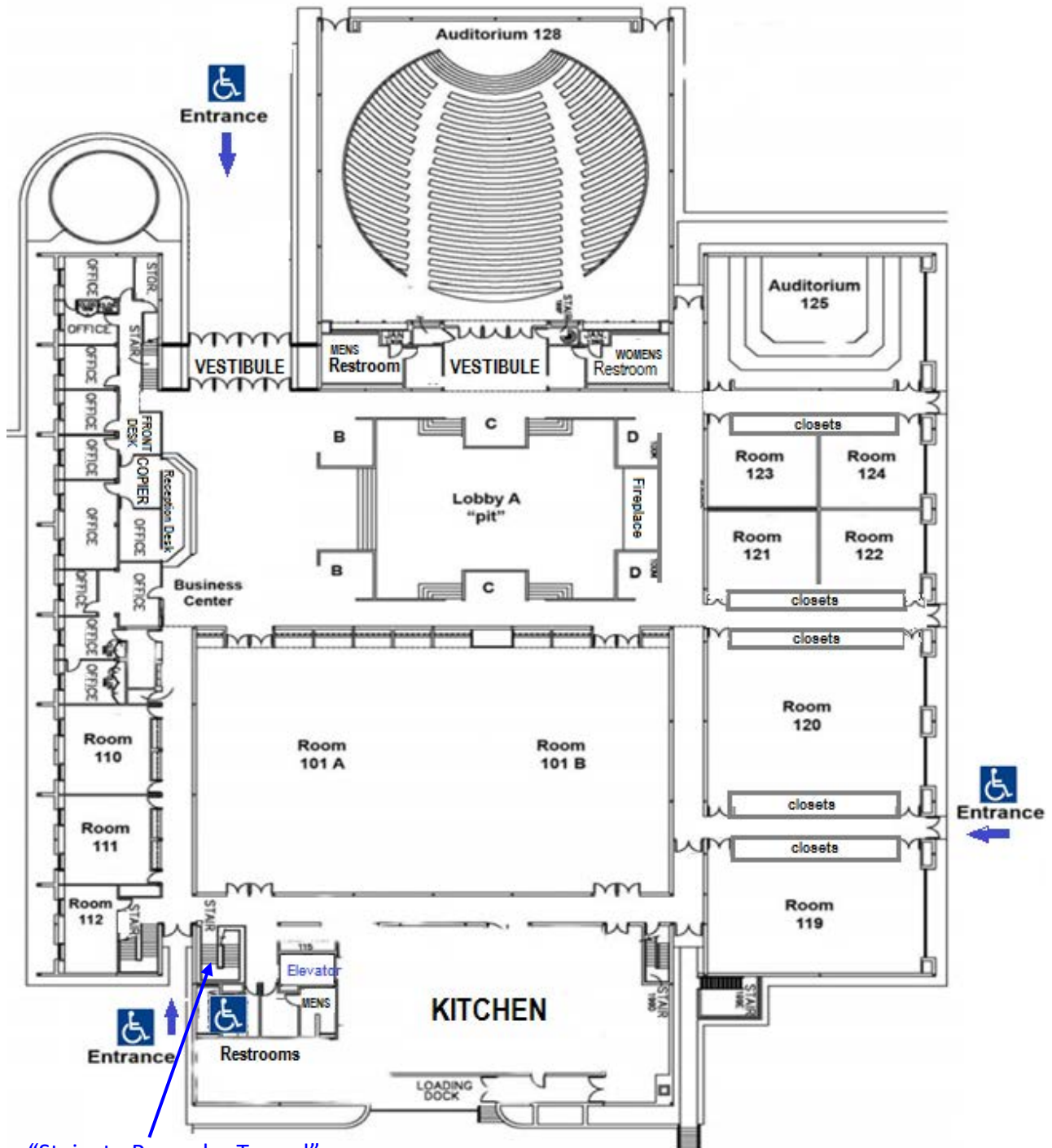




UNIVERSITY OF DELAWARE
CONFERENCE SERVICES

Clayton Conference Center Floorplan



"Stairs to Pencader Tunnel"



UNIVERSITY OF DELAWARE
CONFERENCE SERVICES

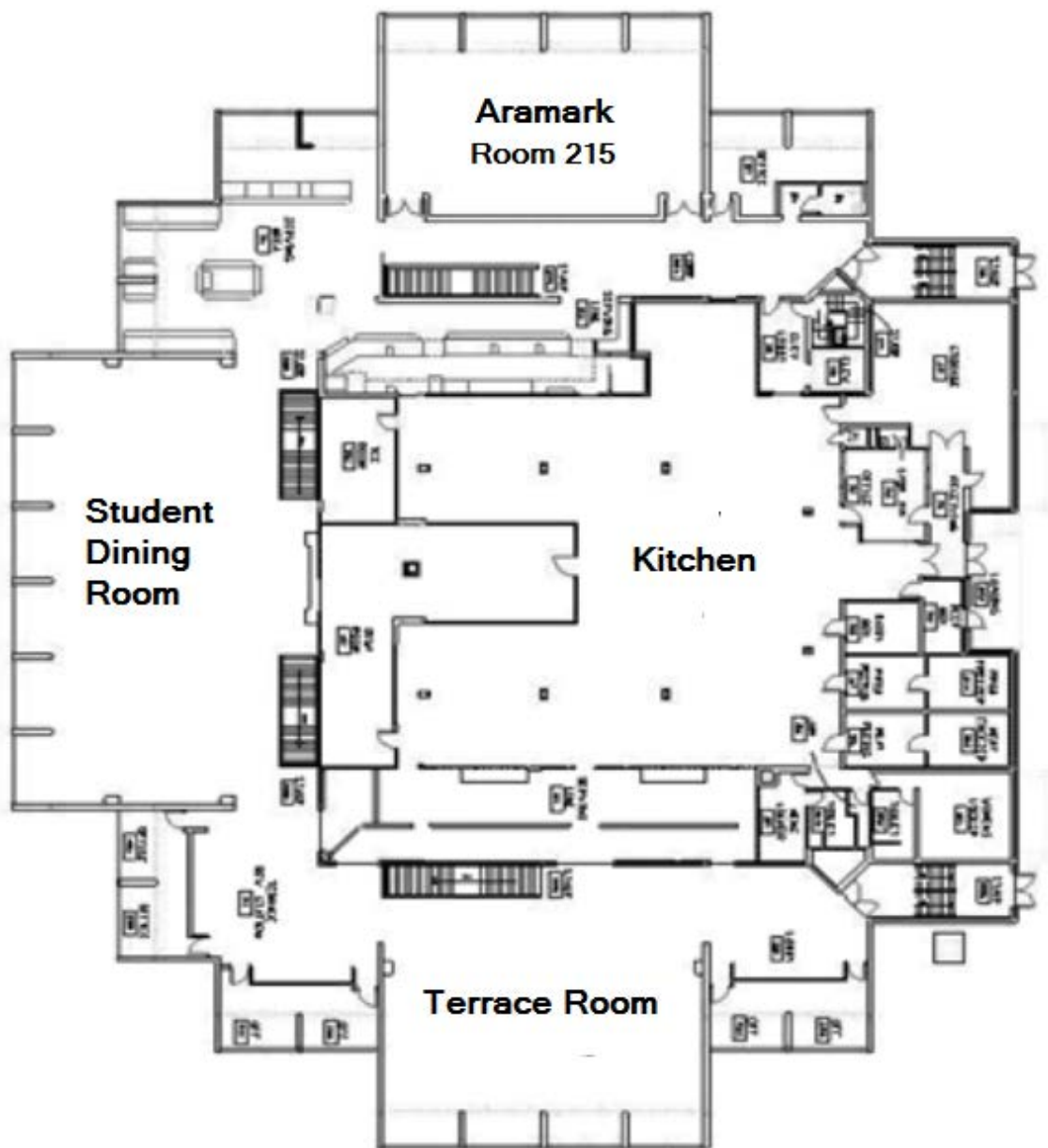
Pencader Conference Center Floorplan, 1st Floor





UNIVERSITY OF DELAWARE
CONFERENCE SERVICES

Pencader Conference Center Floorplan, 2nd Floor





UNIVERSITY OF DELAWARE
CONFERENCE SERVICES

Room Dimensions & Seating Capacity

Clayton Conference Center and Pencader – totaling 18 meeting and conference rooms.

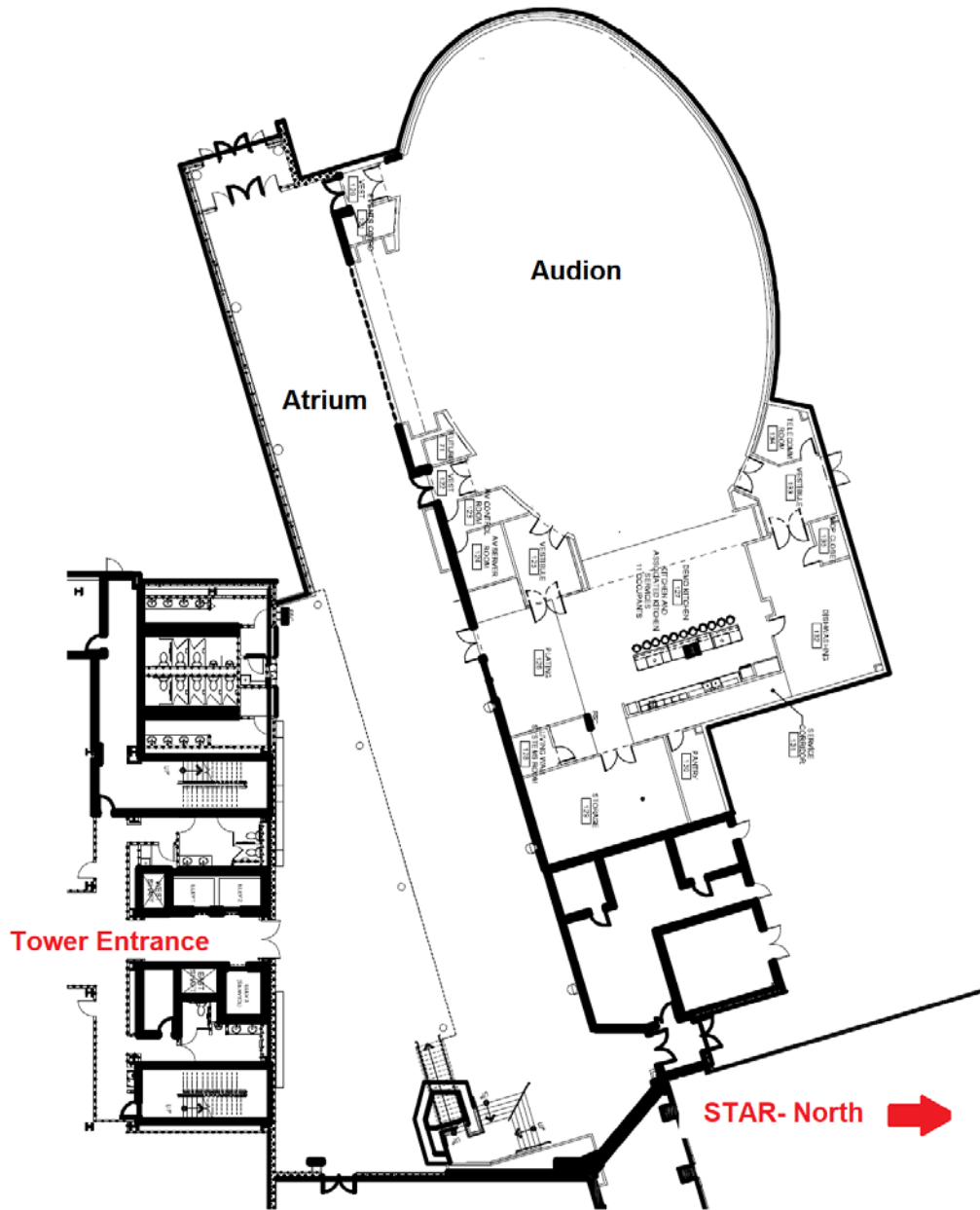
All room capacities are subject to change due to configuration and additional AV and setup needs.

Room	Dimensions L x W	Square Feet	Theater	Class-Room	U-Shape	Banquet (Rounds of 8)	Reception	Exhibits Tables
Clayton								
Lobby/ Pre-Function	107.2 x 45.0	4,824	-	-	-	-	500	15-25
101A	71.8' x 65.4"	4,696	400	200	-	240	500	30-40
101B	35.4' x 65.4'	2,315	200	80	-	120	150	15-20
101A & B	107.2' x 65.4	7,011	700	275	-	400	650-700	45-60
110, 111	23.6' x 19.5'	460	40	24	15	32	--	-
119	48.5' x 31.3'	1,518	100	50	30	96	150	-
120	48.5' x 41.8'	2,027	150	75	40	128	200	-
121, 123	25.3' x 20.3'	514	40	24	15	32	--	-
122, 124	22.5' x 20.3'	457	40	24	15	32	--	-
125	33.0' x 50.0'	1,650	117	-	-	-	-	-
Auditorium - 128	80.0' x 77.0'	6,160	503	-	-	-	-	-
213	22.7' x 16.0'	363	-	-	14	-	-	-
Pencader								
115A	33.6' x 27.4'	921	75	40	24	64	90	-
115B	33.6' x 27.4'	921	75	40	24	64	90	-
115A & B	33.6' x 54.8'	1,841	150	80	40	120	180	-
103	35.5' x 27.0'	959	75	45	24	64	90	-
106	54.8' x 33.6'	1,841	150	80	40	120	180	-
117	35.5' x 27.0'	959	75	45	24	64	90	-



UNIVERSITY OF DELAWARE
CONFERENCE SERVICES

STAR Tower Audion and Atrium Floorplan





UNIVERSITY OF DELAWARE
CONFERENCE SERVICES

Room Dimensions & Seating Capacity

STAR Tower Audion and Atrium

Room capacities are subject to change due to configuration and additional AV and setup needs.

ROOM	Square Feet	Reception	Theater	Class-Room	U-Shape	Banquet (Rounds of 8)
Tower Audion	5585	200	300	150	40	240
Tower Atrium	9003	200	--	--	--	--
Tower Audion/Atrium	14,588	400	--	--	--	--