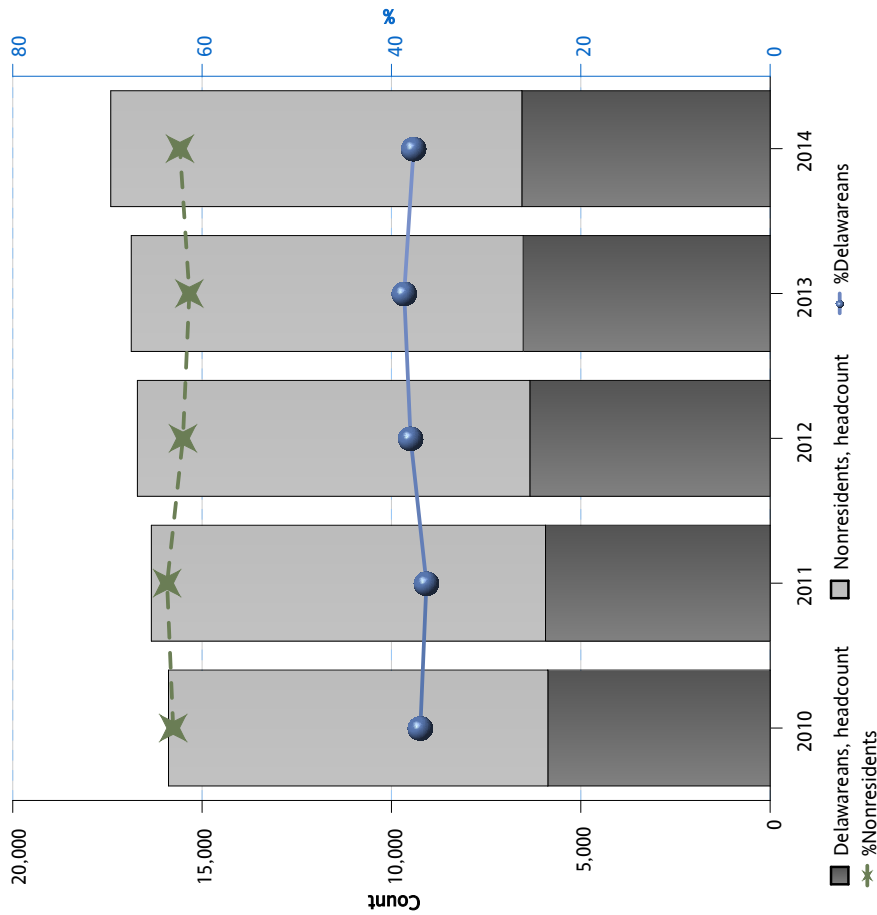
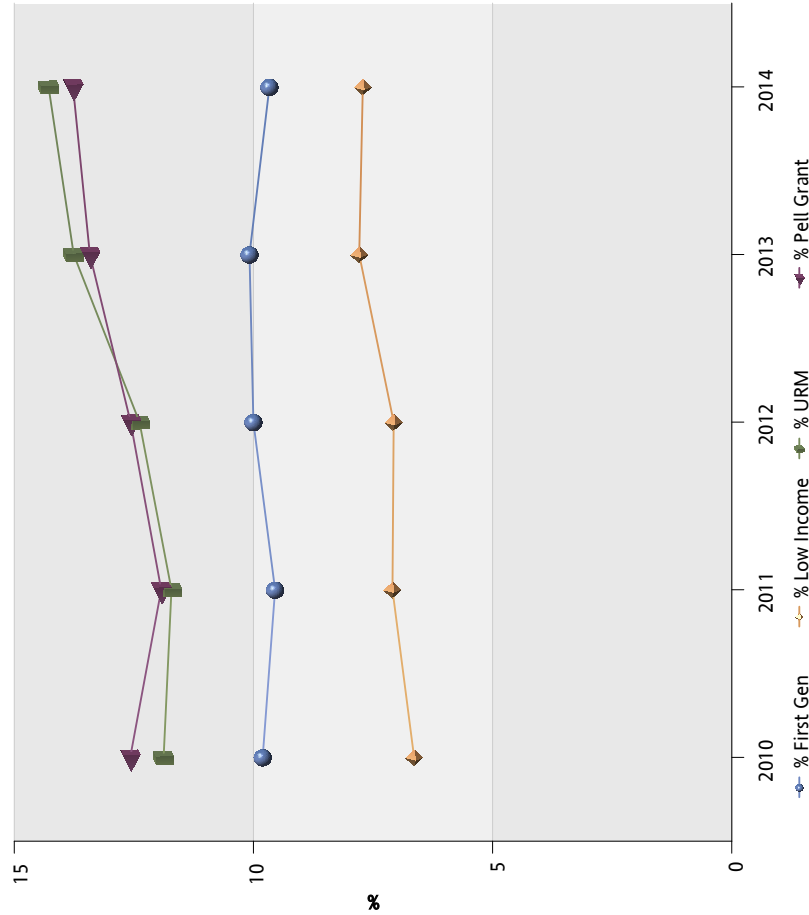


Newark Campus Undergraduates by Residency Over Time



First-Generation, Low-Income, Pell-Grant Recipients, Underrepresented Minority Newark Campus Undergraduate Enrollment Trend



<sup>1</sup>First-Generation students are defined as those whose parents' highest level of education is a high school diploma (National Center for Education Statistics, U.S. Department of Education).

<sup>2</sup>The term "Low-Income" means an individual whose family's taxable income for the preceding year did not exceed 150 percent of the poverty level amount. The poverty guidelines are published by the U.S. Department of Health and Human Services (Office of Postsecondary Education, U.S. Department of Education).

<sup>3</sup>The Federal Pell Grant Program provides need-based grants to low-income undergraduate and certain post-baccalaureate students to promote access to postsecondary education. Pell Grant Recipients receive grant amounts dependent on: the student's expected family contribution (EFC); the cost of attendance (as determined by the institution); the student's enrollment status (full-time or part-time); and whether the student attends for a full academic year or less. Students may not receive Federal Pell Grant funds from more than one school at a time (Office of Postsecondary Education, U.S. Department of Education).

<sup>4</sup>Underrepresented Minority is based on primary ethnicity and includes Black, Hispanic, Native American Indian, Hawaiian or Other Pacific Islander.