



## Help Us At The Fair

The fair is not possible without a cadre of talented 4-H'ers and adult volunteers that make it all happen. Consider volunteering to help set-up the building, check-in exhibits, and assist judges. Good help is always needed, especially adult volunteers.

**Sign-up with your County 4-H Office by June 8.** We ask that all helpers be age 8 or older.

### Monday, July 9—9:00 AM to 4:00 PM

**Clean-up and set-up building.** Looking for older members who can set up exhibit booths and move them into place.  
**Decorate building.** Cut corrugated paper and attach to exhibit booths. Desire older members who can cut paper and use a staple gun, as well as pay attention to detail.

### Monday, July 16—1:45 PM to 6:15 PM

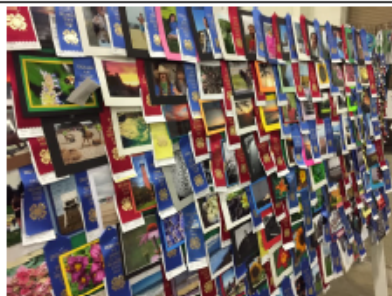
**Exhibit check-in.** Lunch is not provided, but snacks and drinks will be available at 4:00 PM. Sort exhibits by class and check tags for completeness.

### Tuesday, July 17—8:45 AM to 4:00 PM

**Judge's Clerks.** Punch tags and attach ribbons. Record premiums. Must be at least 10 years old.  
**12:00 Noon to 3:00 PM** Begin displaying photos and posters.

### Wednesday, July 18—9:00 AM to 4:00 PM

**Display Teams.** Older 4-H members. Need to be able to work independently and in teams displaying.



### Thursday, July 19 (Note: The second crew should be different from the 8:15 AM workers)

#### **Check-in Foods—8:15 AM to 11:30 AM**

Check tags for completeness and sort by class and assist with display.

#### **Check-in Vegetables/Horticulture—8:15 AM to 11:30 AM**

Check tags for completeness and sort by class and assist with display.

#### **Foods Judge's Clerks and Display—11:00 AM to 4:00 PM**

Must have had lunch prior to arriving at 11:00 AM. Punch tags, attach ribbons, record premiums, and assist judges. Assist with clean-up.

#### **Vegetable/Horticulture Judge's Clerks and Display—11:00 AM to 4:00 PM**

Must have had lunch prior to arriving at 11:00 AM. Punch tags, attach ribbons, record premiums, and assist judges. Assist with clean-up.

### Wednesday, July 25—10:00 AM to 1:00 PM

**Cut Flower check-in.** Clerk and Display.

### Sunday, July 29, Dismantle building. Two groups of volunteers.

**7:30 AM to 10:30 AM** Dismantle exhibit area but not move exhibits. Check-out clerks.

**10:30 AM to 1:30 PM** Big people needed to pull booths apart—muscle!

## Dates to Remember

June 1 ..... **DEADLINE!** ALL online registrations with the Fair close at midnight.

June 8 ..... Complete Host and Hostess Sign-Up Form online

June 8 ..... Helper Form due to County 4-H Office



Cooperative Extension programs and policies are consistent with federal and state laws and regulations on non-discrimination regarding race, sex, religion, age, color, creed, national or ethnic origin; physical, mental or sensory disability; marital status, sexual orientation, or status as a Vietnam-era or disabled veteran. Evidence of noncompliance may be reported through your local Cooperative Extension Office.

If you have special needs that need to be accommodated, please contact the State 4-H Office two weeks prior to the event (302-831-2509).