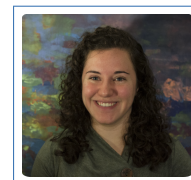


# Michelle Ichinco

✉ [michelle\\_ichinco@uml.edu](mailto:michelle_ichinco@uml.edu)  
📄 <https://sites.uml.edu/michelle-ichinco>



## Interests

Human-computer interaction/ human-centric computing, novice and end-user programming, tools for programming, API learnability, CS education, interfaces for learning, crowdsourcing

## Education

2012–2018 **Ph.D. Computer Science**, Washington University in St. Louis, St. Louis, MO.

Thesis: Supporting Independent Learning for Novice Programmers in an Open-Ended Context.

Advisor: Caitlin Kelleher

2008–2012 **B.S. Computer Science**, Tufts University, Medford, MA, *Magna Cum Laude*

## Honors

2017 **Best Paper Award**, IEEE Visual Languages and Human-Centric Computing

2017 **Selected Participant**, Heidelberg Laureate Forum

2017 **Travel Sponsorship Award**, Oak Ridge Associated Universities (ORAU)

2016 **Excellent Review**, ACM CHI Conference on Human Factors in Computing Systems

2015 **Selected and Funded Participant**, CRA-W Grad Cohort Workshop

2014 **NSF Graduate Research Fellowship Honorable Mention**

2013 **Selected and Funded Participant**, CRA-W Grad Cohort Workshop

2012 **Mr. and Mrs. Spencer T. Olin Fellowship Recipient**: 4 years of PhD funding

2011 **Selected Participant**, CRA-W REU

## Experience

2018-present **Assistant Professor.**

Department of Computer Science, University of Massachusetts Lowell

2012-2018 **Graduate Research Assistant**, *Washington University in St. Louis.*

Designing a feedback system for novice programmers learning independently. By presenting examples and assisting novice programmers in using them, my tool increases novice programmers' use of new code while they work on their own programming projects.

Advisor: Caitlin Kelleher

- May 2015 - **Research Intern**, *Bosch Research and Technology Center*, Pittsburgh, PA.  
Dec. 2015 Topics: Crowdsourcing and learning. Designed, developed and tested a crowdsourcing system for collecting knowledge.  
Supervisor: Ji Eun Kim
- 2011 - 2012 **Undergraduate Research Assistant**, *Tufts University, HCI Lab*.  
Contributed to the design of a brain-computer interaction project on adaptive interruptions.  
Advisors: Rob Jacob and Evan Peck
- 2011 - 2012 **Junior Web Developer**, *Charles River Web*, Somerville, MA.
- May 2011- **Undergraduate Research Assistant**, *Washington University in St. Louis*.  
Aug. 2011 Designed and built a community-supported help system for novice programmers.  
Advisor: Caitlin Kelleher

---

## Publications

### Refereed Journal Articles

- 2017 **Michelle Ichinco**, Kyle J Harms and Caitlin Kelleher. *Towards Understanding Successful Novice Example Use in Blocks-Based Programming*. In: Journal of Visual Languages and Sentient Systems 3, July 2017 (2017), pp. 101–118.

### Refereed Conference Papers

- 2018 **Michelle Ichinco** and Caitlin Kelleher. *Semi-Automatic Suggestion Generation for Young Novice Programmers in an Open-Ended Context*. In: Proceedings of the 17th International Conference on Interaction Design and Children. ACM. 2018.
- 2017 **Michelle Ichinco** and Caitlin Kelleher. *Towards Better Code Snippets: Exploring How Code Snippet Recall Differs with Programming Experience*. In: 2017 IEEE Symposium on Visual Languages and Human-Centric Computing (VL/HCC), IEEE. 2017, pp. 37-42.
- 2017 - Best Paper Wint Yee Hnin, **Michelle Ichinco** and Caitlin Kelleher. *An Exploratory Study of the Usage of Different Educational Resources in an Independent Context*. In: 2017 IEEE Symposium on Visual Languages and Human-Centric Computing (VL/HCC), IEEE. 2017, pp. 181-190.
- 2017 **Michelle Ichinco**, Wint Yee Hnin and Caitlin L. Kelleher. *Suggesting API Usage to Novice Programmers with the Example Guru*. In: Proceedings of the 2017 CHI Conference on Human Factors in Computing Systems. CHI '17. Denver, Colorado, USA: ACM, 2017, pp. 1105–1117.
- 2015 **Michelle Ichinco** and Caitlin Kelleher. *Exploring novice programmer example use*. In: 2015 IEEE Symposium on Visual Languages and Human-Centric Computing (VL/HCC), IEEE. 2015, pp. 63–71.

- 2013 **Michelle Ichinco**, Aaron Zemach and Caitlin Kelleher. *Towards generalizing expert programmers' suggestions for novice programmers*. In: 2013 IEEE Symposium on Visual Languages and Human-Centric Computing (VL/HCC), IEEE. 2013, pp. 143–150.
- 2012 Kyle J Harms, Jordana H Kerr, **Michelle Ichinco** et al. *Designing a community to support long-term interest in programming for middle school children*. In: Proceedings of the 11th International Conference on Interaction Design and Children. ACM. 2012, pp. 304–307.

### Posters

- 2018 **Michelle Ichinco** *A Vision for Interactive Suggested Examples for Novice Programmers* In: 2018 IEEE Symposium on Visual Languages and Human-Centric Computing, to appear.
- 2017 **Michelle Ichinco** and Caitlin Kelleher. *Towards Block Code Examples that Help Young Novices Notice Critical Elements* In: 2017 IEEE Symposium on Visual Languages and Human-Centric Computing (VL/HCC), IEEE. 2017, pp. 335-336.
- 2016 **Michelle Ichinco**, Wint Yee Hnin, and Caitlin Kelleher. *Suggesting Examples to Novice Programmers in an Open-Ended Context with the Example Guru* In: 2016 IEEE Symposium on Visual Languages and Human-Centric Computing (VL/HCC), IEEE. 2016, pp.230-231.
- 2015 **Michelle Ichinco** and Caitlin Kelleher. *Exploring Novice Programmer Example Use* CRA-W Grad Cohort 2015
- 2014 **Michelle Ichinco**, Yoanna Dosouto and Caitlin Kelleher. *A tool for authoring programs that automatically distribute feedback to novice programmers* In: 2014 IEEE Symposium on Visual Languages and Human-Centric Computing (VL/HCC), IEEE. 2014, pp. 207-208.

### Workshops and Graduate Consortium

- 2018 **Michelle Ichinco** *Position Paper: Broadening Participation in Online Problem Solving by Increasing Awareness of Common Contributor Qualities*. In: Workshop on Designing Technologies to Support Human Problem Solving, to appear.
- 2017 **Michelle Ichinco** and Caitlin Kelleher. *A tool for authoring programs that automatically distribute feedback to novice programmers*. In: Blocks and Beyond Workshop (Blocks and Beyond), 2017 IEEE. IEEE, 2017.
- 2016 **Michelle Ichinco** and Caitlin Kelleher. *Personalized Feedback for Open-Ended Novice Programming*. In: WorkLearn 2016: Connecting Online Work and Online Education at Scale, CHI 2016.
- 2016 **Michelle Ichinco**. *Suggesting and supporting examples for novice programmers*. In: 2016 IEEE Symposium on Visual Languages and Human-Centric Computing (VL/HCC) Graduate Consortium, IEEE. 2016, pp. 260-261.

- 2015 **Michelle Ichinco** and Caitlin Kelleher. *Online Community members as mentors for novice programmers position statement*. In: Blocks and Beyond Workshop (Blocks and Beyond), 2015 IEEE. IEEE, 2015, pp.105-107.
- 2015 **Michelle Ichinco**, Kyle J. Harms, and Caitlin Kelleher. *Utilizing Programmer Communities for End User Programmer Feedback*. In: Workshop on End-User Development in the Internet of Things, CHI 2015.
- 2014 **Michelle Ichinco**. *Towards Crowdsourced Large-Scale Feedback for Novice Programmers*. In: 2014 IEEE Symposium on Visual Languages and Human-Centric Computing (VL/HCC) Graduate Consortium, IEEE. 2014, pp. 189-190.

## Teaching and Mentoring

- Fall 2018 **Instructor**, Human-Computer Interaction (Undergrad + Graduate)
- Fall 2016 **TA**, Human-Computer Interaction (Graduate-level)
- Spring 2017 **TA**, Software Engineering (Undergraduate-level)
- Summer 2017 REU Mentor: Annie Lee and Angela He, current undergraduate students
- 2016-2017 Mentor: Wint Hnin, currently a 3rd year PhD student
- 2014 REU Mentor: Jeremy Phillip, currently a MS student in HCI at Georgia Tech
- Summer 2013 REU Mentor: Joanna Desouto, currently a User Experience Researcher at Google

## Service

- 2018 **Program Committee**: Blocks+ workshop at SPLASH, VL/HCC Posters
- 2018 **Reviewer**: ACM CHI, International Journal of Child-Computer Interaction, ACM Transactions on Computing Education, ACM SIGCSE
- 2017 **Reviewer**: VLHCC Showpieces
- 2017 **Program Committee**: HCI Across Borders Workshop at CHI
- 2016 **Reviewer**: ACM CHI
- 2015-2016 **Olin Fellowship Conference Planning Committee**
- 2014-2015 **Treasurer**, Washington University in St. Louis CSE Graduate Student Association
- 2014-2015 **Department Representative**, Washington University in St. Louis Graduate Council
- **Professional Membership**: Institute of Electrical and Electronics Engineers (IEEE), Association for Computing Machinery (ACM)