

## What is the purpose of the study?

The study goal is to better understand how experiences during pregnancy and early in life affect mothers and children's well-being.

## Who is needed?

Pregnant mothers who are currently enrolled in the March of Dimes 1000 Women Cohort study and will soon deliver or have delivered.

## What will I receive if I participate?

- \$100 for MRI scan at birth and \$125 for MRI scan at age 2 along with a picture of your child's brain.
- \$100 for your child's 1<sup>st</sup> and 2<sup>nd</sup> year developmental follow up testing, and \$125 for the 3<sup>rd</sup> year developmental testing.
- \$20 gift card for every stool sample and set of surveys provided from home, for a total of 11 stool samples and 6 sets of surveys.
- If you complete all research activities you can receive up to \$890 over three years.
- If needed, we will provide transport to and from the Washington University campus.



## What is involved if I participate?

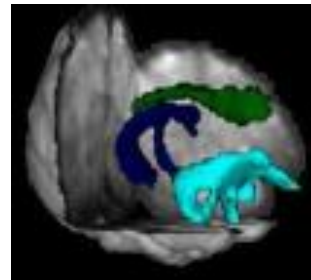
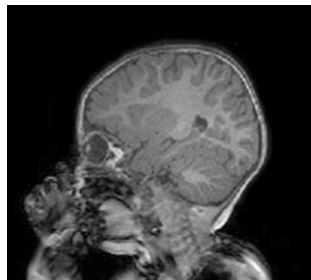
### *During your third trimester:*

- If possible, you will fill out a brief survey and collect up to 2 stool samples.



### *In the hospital or soon after discharge we will:*

- Collect a stool sample from you and from your child's diaper.
- Collect a small amount of blood (about 1/10<sup>th</sup> of a teaspoon) during the Newborn Screen
- Evaluate your child's behaviors in a short assessment.
- Take pictures of your child's brain using an MRI machine while they are sleeping.



### *Between each of your child's birthdays:*

- You will fill out a brief set of surveys and collect stool samples from your child at 4, 8, 16, and 20 months old.



### *Around each of your child's birthdays:*

- You will fill out a brief survey about your family life and parenting experiences and collect a stool sample from your child.



## What to expect at the follow up visits:

You and your child will complete a developmental study visit on the medical school campus around 1, 2, and 3 years old.

### Caregiver:

You will complete an interview at the follow-up visits about your child's extended family.



### Child:

Your child will participate in developmental testing. Some tasks your child will do alone, and some tasks you will do together.

Your child will have their blood drawn at St. Louis Children's Hospital at no cost to test lead levels which is recommended by the Centers for Disease Control and Prevention for all children.



## Interested in this study? Have questions?

Contact Lori Ingram at the  
Washington University School of  
Medicine



**Lori Ingram**

**CALL 314-747-2160**

Lori is happy to help with any questions you have about the study. Thank you, the

eLABE

research team!

**IDDRC**

Washington University in St. Louis

FOR IRB USE ONLY  
IRB ID #: 201703145  
APPROVAL DATE: 04/13/18  
RELEASED DATE: 04/13/18  
EXPIRATION DATE: 03/21/19

 **Washington  
University in St. Louis**  
**SCHOOL OF MEDICINE**



Examining how experiences during pregnancy and early in life affects mother's and children's well-being

