

Academy Building (199)



| | |
|---|------|
| Accessible Entrance(s) | None |
| *All public entrances have at least one step. | |
| Power Assist Doors | None |
| Rooms NOT Accessible | All |
| Accessible Restrooms | None |
| Elevators | None |
| Chair Lifts | None |
| Braille | None |

ACADEMY BUILDING LEVEL 1 (199)

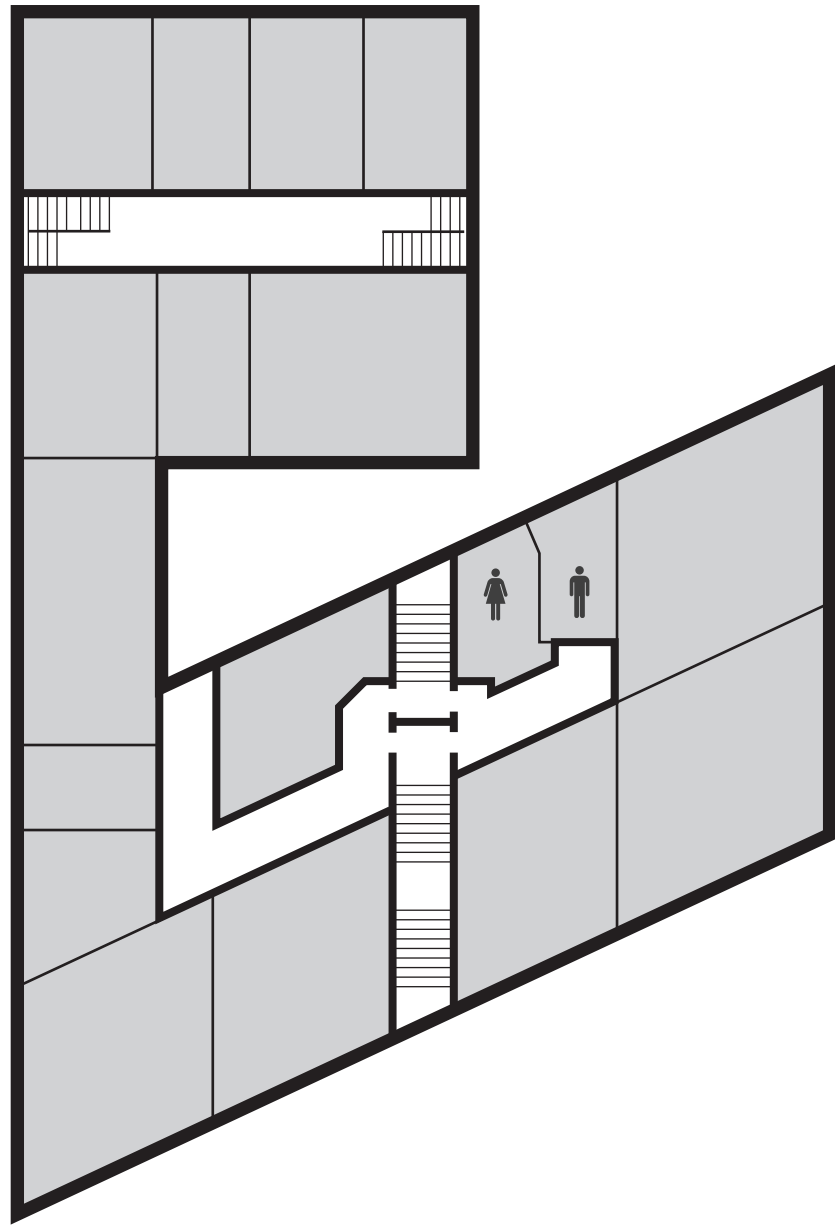


LEGEND

-  EXITS
-  ACCESSIBLE ENTRANCE
-  ACCESSIBLE RESTROOM
-  ELEVATOR



ACADEMY BUILDING LEVEL 2 (199)



LEGEND

-  EXITS
-  ACCESSIBLE ENTRANCE
-  ACCESSIBLE RESTROOM
-  ELEVATOR

