

Supplementary Information

Fig. S1. The *A. sagrei* invasion of Florida shows an exponential pattern of range expansion.

The number of counties in Florida with established populations of *A. sagrei* has increased exponentially from initial introductions in the 1880's to recently established populations in 2000's ($Y = 0.163e^{0.038x}$; $P < 0.0001$; $R^2 = 0.912$)^{S1}. Dates were taken from the Florida Fish and

Wildlife Conservation Commission's website

(<http://wld.fwc.state.fl.us/critters/exotics/SpeciesNumberResults.asp?SPPNO=25>) and verified in

the literature by the authors. Inconsistencies between the website and literature sources were

resolved in favor of the literature.

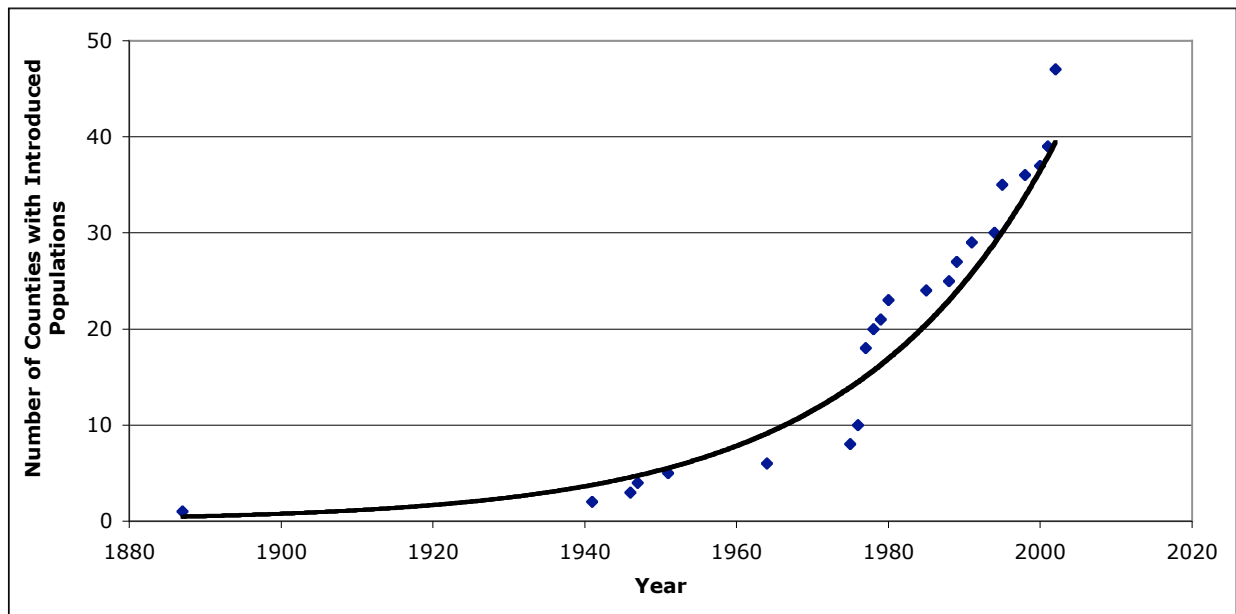


Fig. S2. Statistical parsimony networks connecting introduced and native-range haplotypes^{S2}.

Letters for each network correspond to native-range clades identified in Figs. 1 and 2. Each square is a unique haplotype with its size proportional to the haplotype's frequency; its color indicates the geographic origin of the sample, and black dots represent inferred mutational steps between haplotypes. The haplotype network from the Western Cuba clade (A) was divided into two sub-networks (1 & 2) to recognize the haplotype divergence within the network. All native-range haplotypes are from Cuba except for one haplotype from each of the Bahamas (F) and Belize (H). The one haplotype nested within the Bahamian clade (F) was too distantly related to the closest haplotypes sampled from San Salvador, Bahamas to form a haplotype network with 95% confidence.

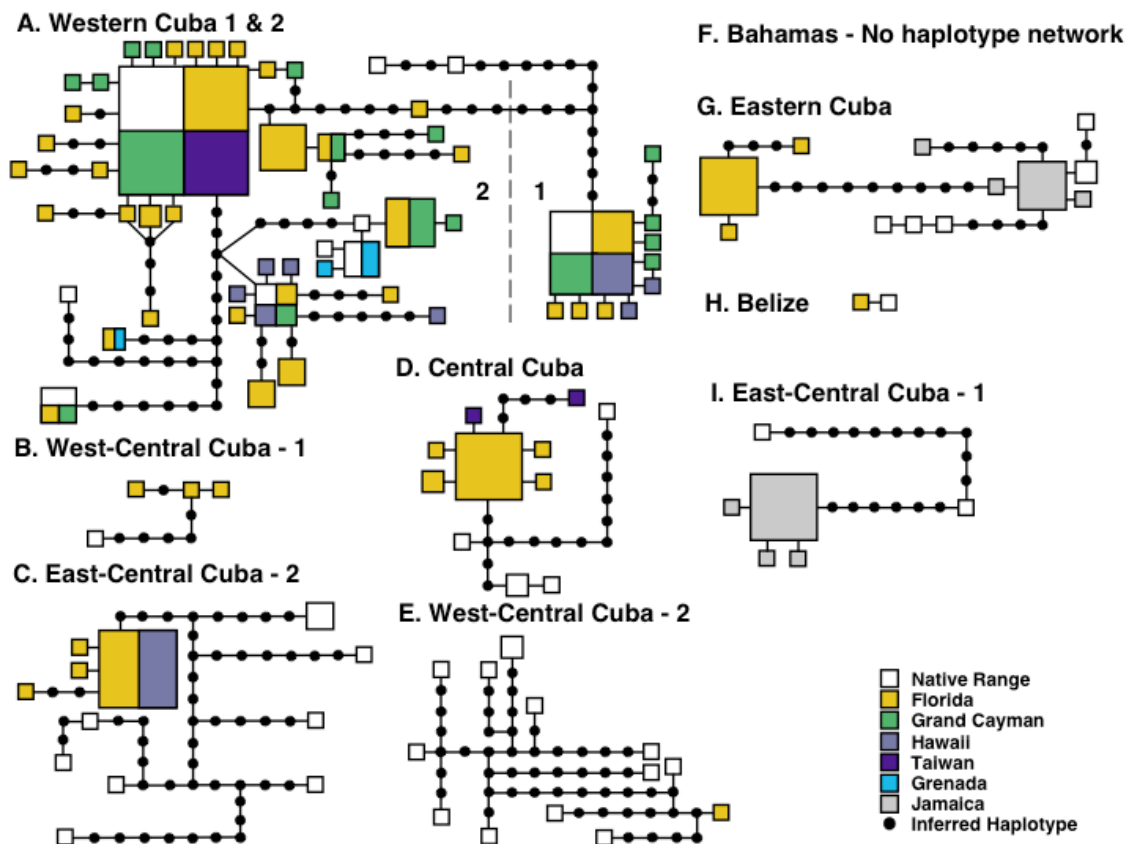


Fig. S3. The histogram shows the frequency of mean pairwise mtDNA sequence divergences within populations for introduced Florida and native Cuban populations^{S1,S3}.

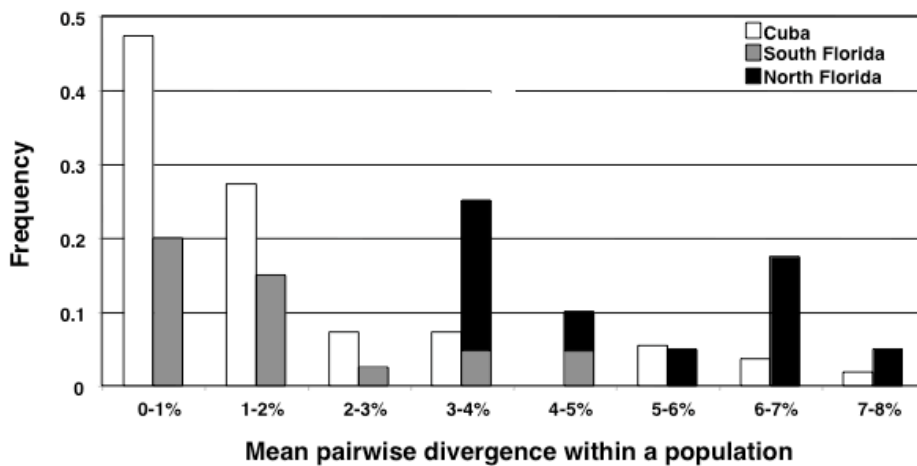


Table S1. Chronology of *A. sagrei* introductions to Jamaica, Florida (U.S.), Hawaii (U.S.), Grand Cayman, Taiwan, and Grenada with the approximate date of introduction and references for each locality. Dates for Florida were taken from the Florida Fish and Wildlife Conservation Commission's website (<http://wld.fwc.state.fl.us/critters/exotics/SpeciesNumberResults.asp?SPPNO=25>) and verified in the literature by the authors. Inconsistencies between the website and literature sources were resolved in favor of the literature.

| Locality | County | Introduction date | References |
|--------------|--------------|-------------------|-----------------|
| Jamaica | | Pre-1861 | <i>S4</i> |
| Florida | Monroe | 1887 | <i>S5</i> |
| Florida | Palm Beach | 1941 | <i>S6</i> |
| Florida | Pinellas | 1946 | <i>S6</i> |
| Florida | Hillsborough | 1947 | <i>S6</i> |
| Florida | Dade | 1951 | <i>S7</i> |
| Florida | Broward | 1964 | <i>S8</i> |
| Florida | St. Johns | 1975 | <i>S9</i> |
| Florida | Collier | 1976 | <i>S10</i> |
| Florida | Glades | 1976 | <i>S11</i> |
| Florida | Highlands | 1977 | <i>S10</i> |
| Florida | Lee | 1977 | <i>S10, S12</i> |
| Florida | Manatee | 1977 | <i>S10</i> |
| Florida | Osceola | 1977 | <i>S10</i> |
| Florida | Pasco | 1977 | <i>S10</i> |
| Florida | Polk | 1977 | <i>S10</i> |
| Florida | Sarasota | 1977 | <i>S10</i> |
| Florida | St. Lucie | 1977 | <i>S13</i> |
| Florida | Levy | 1978 | <i>S12</i> |
| Florida | Orange | 1978 | <i>S10</i> |
| Florida | Marion | 1979 | <i>S10</i> |
| Florida | Alachua | 1980 | <i>S14</i> |
| Florida | Lake | 1980 | <i>S15</i> |
| Hawaii | | 1980 | <i>S16</i> |
| Grand Cayman | | 1984 | <i>S17</i> |
| Florida | Duval | 1985 | <i>S18</i> |

| | | | |
|---------|------------|------|------------|
| Florida | Brevard | 1988 | <i>S19</i> |
| Florida | Bay | 1989 | <i>S20</i> |
| Florida | Volusia | 1989 | <i>S21</i> |
| Florida | Citrus | 1991 | <i>S22</i> |
| Florida | Columbia | 1991 | <i>S21</i> |
| Florida | Nassau | 1994 | <i>S23</i> |
| Florida | Baker | 1995 | <i>S21</i> |
| Florida | Flagler | 1995 | <i>S21</i> |
| Florida | Franklin | 1995 | <i>S24</i> |
| Florida | Hamilton | 1995 | <i>S21</i> |
| Florida | Putnam | 1995 | <i>S21</i> |
| Florida | Hardee | 1998 | <i>S25</i> |
| Florida | Taylor | 2000 | <i>S26</i> |
| Taiwan | | 2000 | <i>S27</i> |
| Florida | Gilchrist | 2001 | <i>S26</i> |
| Florida | Martin | 2001 | <i>S26</i> |
| Florida | Bradford | 2002 | <i>S15</i> |
| Florida | De Soto | 2002 | <i>S15</i> |
| Florida | Dixie | 2002 | <i>S15</i> |
| Florida | Hendry | 2002 | <i>S15</i> |
| Florida | Hernando | 2002 | <i>S15</i> |
| Florida | Okeechobee | 2002 | <i>S15</i> |
| Florida | Suwannee | 2002 | <i>S15</i> |
| Florida | Union | 2002 | <i>S15</i> |
| Grenada | | 2002 | <i>S28</i> |

Table S2. Sampling of native and introduced *A. sagrei* populations for this study.

| Locality | Number of populations | Number of individuals |
|--------------------------|-----------------------|-----------------------|
| Native Range: | | |
| Cuba | 57 | 255 |
| Bahamas | 9 | 43 |
| Little Cayman | 2 | 11 |
| Cayman Brac | 2 | 10 |
| Belize | 1 | 1 |
| Introduced Range: | | |
| Florida | 40 | 199 |
| Jamaica | 8 | 35 |
| Grand Cayman | 6 | 29 |
| Hawaii | 3 | 13 |
| Taiwan | 1 | 10 |
| Grenada | 1 | 3 |
| Total | 130 | 609 |

Table S3. GenBank accession numbers for all unique sequences used in this study.

| Species | Locality | Accession Number |
|-------------------------------|-----------------------------|------------------|
| <i>Anolis homolechis</i> | La Habana, Cuba | AY655164 |
| <i>Anolis bremeri</i> | Las Canas, Cuba | AY655165 |
| <i>Anolis bremeri</i> | Las Canas, Cuba | AY655166 |
| <i>Anolis bremeri</i> | Pinar del Rio, Cuba | AY655167 |
| <i>Anolis quadriocellifer</i> | El Cayuco, Cuba | AY655168 |
| <i>Anolis quadriocellifer</i> | El Cayuco, Cuba | AY655169 |
| <i>Anolis quadriocellifer</i> | El Cayuco, Cuba | AY655170 |
| <i>Anolis quadriocellifer</i> | El Cayuco, Cuba | AY655171 |
| <i>Anolis sagrei</i> | Playa Larga, Cuba | AY655172 |
| <i>Anolis sagrei</i> | Playa Girón, Cuba | AY655173 |
| <i>Anolis sagrei</i> | Topes de Collantes, Cuba | AY655174 |
| <i>Anolis sagrei</i> | Topes de Collantes, Cuba | AY655175 |
| <i>Anolis sagrei</i> | La Habana, Cuba | AY655176 |
| <i>Anolis sagrei</i> | La Habana, Cuba | AY655177 |
| <i>Anolis sagrei</i> | Soroa, Cuba | AY655178 |
| <i>Anolis sagrei</i> | Soroa, Cuba | AY655179 |
| <i>Anolis sagrei</i> | Soroa, Cuba | AY655180 |
| <i>Anolis sagrei</i> | Soroa, Cuba | AY655181 |
| <i>Anolis sagrei</i> | Soroa, Cuba | AY655182 |
| <i>Anolis sagrei</i> | San Juan y Martinez, Cuba | AY655183 |
| <i>Anolis sagrei</i> | San Juan y Martinez, Cuba | AY655184 |
| <i>Anolis sagrei</i> | San Juan y Martinez, Cuba | AY655185 |
| <i>Anolis sagrei</i> | Ciego de Ávila, Cuba | AY655186 |
| <i>Anolis sagrei</i> | Ciego de Ávila, Cuba | AY655187 |
| <i>Anolis sagrei</i> | Portillo, Cuba | AY655188 |
| <i>Anolis sagrei</i> | Santiago de Cuba, Cuba | AY655189 |
| <i>Anolis sagrei</i> | Santiago de Cuba, Cuba | AY655190 |
| <i>Anolis sagrei</i> | San José de las Lajas, Cuba | AY655191 |
| <i>Anolis sagrei</i> | San José de las Lajas, Cuba | AY655192 |
| <i>Anolis sagrei</i> | San José de las Lajas, Cuba | AY655193 |
| <i>Anolis sagrei</i> | San José de las Lajas, Cuba | AY655194 |
| <i>Anolis sagrei</i> | El Cenote, Cuba | AY655195 |
| <i>Anolis sagrei</i> | El Cenote, Cuba | AY655196 |
| <i>Anolis sagrei</i> | El Cenote, Cuba | AY655197 |
| <i>Anolis sagrei</i> | El Cenote, Cuba | AY655198 |
| <i>Anolis sagrei</i> | El Cenote, Cuba | AY655199 |
| <i>Anolis sagrei</i> | Cardenas, Cuba | AY655200 |
| <i>Anolis sagrei</i> | Cardenas, Cuba | AY655201 |

| | | |
|----------------------|----------------------|----------|
| <i>Anolis sagrei</i> | Cardenas, Cuba | AY655202 |
| <i>Anolis sagrei</i> | Cardenas, Cuba | AY655203 |
| <i>Anolis sagrei</i> | Cardenas, Cuba | AY655204 |
| <i>Anolis sagrei</i> | Santo Tomás, Cuba | AY655205 |
| <i>Anolis sagrei</i> | Santo Tomás, Cuba | AY655206 |
| <i>Anolis sagrei</i> | Santo Tomás, Cuba | AY655207 |
| <i>Anolis sagrei</i> | Santo Tomás, Cuba | AY655208 |
| <i>Anolis sagrei</i> | Juragua, Cuba | AY655209 |
| <i>Anolis sagrei</i> | Juragua, Cuba | AY655210 |
| <i>Anolis sagrei</i> | Juragua, Cuba | AY655211 |
| <i>Anolis sagrei</i> | Perico, Cuba | AY655212 |
| <i>Anolis sagrei</i> | Perico, Cuba | AY655213 |
| <i>Anolis sagrei</i> | Perico, Cuba | AY655214 |
| <i>Anolis sagrei</i> | Perico, Cuba | AY655215 |
| <i>Anolis sagrei</i> | N. Aguada, Cuba | AY655216 |
| <i>Anolis sagrei</i> | N. Aguada, Cuba | AY655217 |
| <i>Anolis sagrei</i> | N. Aguada, Cuba | AY655218 |
| <i>Anolis sagrei</i> | Ciego de Ávila, Cuba | AY655219 |
| <i>Anolis sagrei</i> | Ciego de Ávila, Cuba | AY655220 |
| <i>Anolis sagrei</i> | Ciego de Ávila, Cuba | AY655221 |
| <i>Anolis sagrei</i> | Ciego de Ávila, Cuba | AY655222 |
| <i>Anolis sagrei</i> | N. Morón, Cuba | AY655223 |
| <i>Anolis sagrei</i> | N. Morón, Cuba | AY655224 |
| <i>Anolis sagrei</i> | N. Morón, Cuba | AY655225 |
| <i>Anolis sagrei</i> | W. Florida, Cuba | AY655226 |
| <i>Anolis sagrei</i> | W. Florida, Cuba | AY655227 |
| <i>Anolis sagrei</i> | W. Florida, Cuba | AY655228 |
| <i>Anolis sagrei</i> | S. Camagüey, Cuba | AY655229 |
| <i>Anolis sagrei</i> | S. Camagüey, Cuba | AY655230 |
| <i>Anolis sagrei</i> | S. Camagüey, Cuba | AY655231 |
| <i>Anolis sagrei</i> | S. Camagüey, Cuba | AY655232 |
| <i>Anolis sagrei</i> | S. Camagüey, Cuba | AY655233 |
| <i>Anolis sagrei</i> | Minas, Cuba | AY655234 |
| <i>Anolis sagrei</i> | Minas, Cuba | AY655235 |
| <i>Anolis sagrei</i> | Minas, Cuba | AY655236 |
| <i>Anolis sagrei</i> | Minas, Cuba | AY655237 |
| <i>Anolis sagrei</i> | Cascorro, Cuba | AY655238 |
| <i>Anolis sagrei</i> | Cascorro, Cuba | AY655239 |
| <i>Anolis sagrei</i> | Cascorro, Cuba | AY655240 |
| <i>Anolis sagrei</i> | Cascorro, Cuba | AY655241 |
| <i>Anolis sagrei</i> | San Blas, Cuba | AY655242 |

| | | |
|----------------------|---------------------|----------|
| <i>Anolis sagrei</i> | San Blas, Cuba | AY655243 |
| <i>Anolis sagrei</i> | San Blas, Cuba | AY655244 |
| <i>Anolis sagrei</i> | Holguín, Cuba | AY655245 |
| <i>Anolis sagrei</i> | Holguín, Cuba | AY655246 |
| <i>Anolis sagrei</i> | Holguín, Cuba | AY655247 |
| <i>Anolis sagrei</i> | Holguín, Cuba | AY655248 |
| <i>Anolis sagrei</i> | Holguín, Cuba | AY655249 |
| <i>Anolis sagrei</i> | Cauto, Cuba | AY655250 |
| <i>Anolis sagrei</i> | Cauto, Cuba | AY655251 |
| <i>Anolis sagrei</i> | Cauto, Cuba | AY655252 |
| <i>Anolis sagrei</i> | Cauto, Cuba | AY655253 |
| <i>Anolis sagrei</i> | Cauto, Cuba | AY655254 |
| <i>Anolis sagrei</i> | Jaguani, Cuba | AY655255 |
| <i>Anolis sagrei</i> | W. Bayamo, Cuba | AY655256 |
| <i>Anolis sagrei</i> | W. Bayamo, Cuba | AY655257 |
| <i>Anolis sagrei</i> | W. Bayamo, Cuba | AY655258 |
| <i>Anolis sagrei</i> | N. Media Luna, Cuba | AY655259 |
| <i>Anolis sagrei</i> | N. Media Luna, Cuba | AY655260 |
| <i>Anolis sagrei</i> | N. Media Luna, Cuba | AY655261 |
| <i>Anolis sagrei</i> | N. Media Luna, Cuba | AY655262 |
| <i>Anolis sagrei</i> | N. Media Luna, Cuba | AY655263 |
| <i>Anolis sagrei</i> | Portillo, Cuba | AY655264 |
| <i>Anolis sagrei</i> | Portillo, Cuba | AY655265 |
| <i>Anolis sagrei</i> | Portillo, Cuba | AY655266 |
| <i>Anolis sagrei</i> | Limoncito, Cuba | AY655267 |
| <i>Anolis sagrei</i> | Limoncito, Cuba | AY655268 |
| <i>Anolis sagrei</i> | Limoncito, Cuba | AY655269 |
| <i>Anolis sagrei</i> | W. Sigua, Cuba | AY655270 |
| <i>Anolis sagrei</i> | W. Sigua, Cuba | AY655271 |
| <i>Anolis sagrei</i> | W. Sigua, Cuba | AY655272 |
| <i>Anolis sagrei</i> | W. Sigua, Cuba | AY655273 |
| <i>Anolis sagrei</i> | Guantánamo, Cuba | AY655274 |
| <i>Anolis sagrei</i> | Guantánamo, Cuba | AY655275 |
| <i>Anolis sagrei</i> | Guantánamo, Cuba | AY655276 |
| <i>Anolis sagrei</i> | Maisí, Cuba | AY655277 |
| <i>Anolis sagrei</i> | Maisí, Cuba | AY655278 |
| <i>Anolis sagrei</i> | El Yunque, Cuba | AY655279 |
| <i>Anolis sagrei</i> | Moa, Cuba | AY655280 |
| <i>Anolis sagrei</i> | Moa, Cuba | AY655281 |
| <i>Anolis sagrei</i> | Moa, Cuba | AY655282 |
| <i>Anolis sagrei</i> | Moa, Cuba | AY655283 |

| | | |
|----------------------|-----------------------|----------|
| <i>Anolis sagrei</i> | W. Mayari, Cuba | AY655284 |
| <i>Anolis sagrei</i> | W. Mayari, Cuba | AY655285 |
| <i>Anolis sagrei</i> | W. Mayari, Cuba | AY655286 |
| <i>Anolis sagrei</i> | Gibara, Cuba | AY655287 |
| <i>Anolis sagrei</i> | Gibara, Cuba | AY655288 |
| <i>Anolis sagrei</i> | Puerto Padre, Cuba | AY655289 |
| <i>Anolis sagrei</i> | Puerto Padre, Cuba | AY655290 |
| <i>Anolis sagrei</i> | Puerto Padre, Cuba | AY655291 |
| <i>Anolis sagrei</i> | Las Tunas, Cuba | AY655292 |
| <i>Anolis sagrei</i> | Las Tunas, Cuba | AY655293 |
| <i>Anolis sagrei</i> | Las Tunas, Cuba | AY655294 |
| <i>Anolis sagrei</i> | Las Tunas, Cuba | AY655295 |
| <i>Anolis sagrei</i> | Las Tunas, Cuba | AY655296 |
| <i>Anolis sagrei</i> | Rio Cauto, Cuba | AY655297 |
| <i>Anolis sagrei</i> | Rio Cauto, Cuba | AY655298 |
| <i>Anolis sagrei</i> | Rio Cauto, Cuba | AY655299 |
| <i>Anolis sagrei</i> | Rio Cauto, Cuba | AY655300 |
| <i>Anolis sagrei</i> | Rio Cauto, Cuba | AY655301 |
| <i>Anolis sagrei</i> | Jobabo, Cuba | AY655302 |
| <i>Anolis sagrei</i> | Jobabo, Cuba | AY655303 |
| <i>Anolis sagrei</i> | Jobabo, Cuba | AY655304 |
| <i>Anolis sagrei</i> | Vertientes, Cuba | AY655305 |
| <i>Anolis sagrei</i> | Vertientes, Cuba | AY655306 |
| <i>Anolis sagrei</i> | Vertientes, Cuba | AY655307 |
| <i>Anolis sagrei</i> | Vertientes, Cuba | AY655308 |
| <i>Anolis sagrei</i> | Vertientes, Cuba | AY655309 |
| <i>Anolis sagrei</i> | S. Esmerelda, Cuba | AY655310 |
| <i>Anolis sagrei</i> | S. Esmerelda, Cuba | AY655311 |
| <i>Anolis sagrei</i> | S. Esmerelda, Cuba | AY655312 |
| <i>Anolis sagrei</i> | Sancti Spíritus, Cuba | AY655313 |
| <i>Anolis sagrei</i> | Sancti Spíritus, Cuba | AY655314 |
| <i>Anolis sagrei</i> | Sancti Spíritus, Cuba | AY655315 |
| <i>Anolis sagrei</i> | Caracusey, Cuba | AY655316 |
| <i>Anolis sagrei</i> | Caracusey, Cuba | AY655317 |
| <i>Anolis sagrei</i> | Caracusey, Cuba | AY655318 |
| <i>Anolis sagrei</i> | W. Trinidad, Cuba | AY655319 |
| <i>Anolis sagrei</i> | W. Trinidad, Cuba | AY655320 |
| <i>Anolis sagrei</i> | W. Trinidad, Cuba | AY655321 |
| <i>Anolis sagrei</i> | W. Trinidad, Cuba | AY655322 |
| <i>Anolis sagrei</i> | W. Trinidad, Cuba | AY655323 |
| <i>Anolis sagrei</i> | S. Manicargua, Cuba | AY655324 |

| | | |
|----------------------|-----------------------|----------|
| <i>Anolis sagrei</i> | S. Manicargua, Cuba | AY655325 |
| <i>Anolis sagrei</i> | S. Manicargua, Cuba | AY655326 |
| <i>Anolis sagrei</i> | S. Manicargua, Cuba | AY655327 |
| <i>Anolis sagrei</i> | Sagua la Grande, Cuba | AY655328 |
| <i>Anolis sagrei</i> | Sagua la Grande, Cuba | AY655329 |
| <i>Anolis sagrei</i> | Sagua la Grande, Cuba | AY655330 |
| <i>Anolis sagrei</i> | Sagua la Grande, Cuba | AY655331 |
| <i>Anolis sagrei</i> | Corralillo, Cuba | AY655332 |
| <i>Anolis sagrei</i> | Corralillo, Cuba | AY655333 |
| <i>Anolis sagrei</i> | Corralillo, Cuba | AY655334 |
| <i>Anolis sagrei</i> | Corralillo, Cuba | AY655335 |
| <i>Anolis sagrei</i> | Corralillo, Cuba | AY655336 |
| <i>Anolis sagrei</i> | Santo Domingo, Cuba | AY655337 |
| <i>Anolis sagrei</i> | Santo Domingo, Cuba | AY655338 |
| <i>Anolis sagrei</i> | Santo Domingo, Cuba | AY655339 |
| <i>Anolis sagrei</i> | Santo Domingo, Cuba | AY655340 |
| <i>Anolis sagrei</i> | Santo Domingo, Cuba | AY655341 |
| <i>Anolis sagrei</i> | Caibarién, Cuba | AY655342 |
| <i>Anolis sagrei</i> | Caibarién, Cuba | AY655343 |
| <i>Anolis sagrei</i> | Caibarién, Cuba | AY655344 |
| <i>Anolis sagrei</i> | Caibarién, Cuba | AY655345 |
| <i>Anolis sagrei</i> | E. Yaguajay, Cuba | AY655346 |
| <i>Anolis sagrei</i> | E. Yaguajay, Cuba | AY655347 |
| <i>Anolis sagrei</i> | E. Yaguajay, Cuba | AY655348 |
| <i>Anolis sagrei</i> | E. Yaguajay, Cuba | AY655349 |
| <i>Anolis sagrei</i> | E. Yaguajay, Cuba | AY655350 |
| <i>Anolis sagrei</i> | Santa Clara, Cuba | AY655351 |
| <i>Anolis sagrei</i> | Santa Clara, Cuba | AY655352 |
| <i>Anolis sagrei</i> | Santa Clara, Cuba | AY655353 |
| <i>Anolis sagrei</i> | Santa Clara, Cuba | AY655354 |
| <i>Anolis sagrei</i> | Santa Clara, Cuba | AY655355 |
| <i>Anolis sagrei</i> | Jicarita, Cuba | AY655356 |
| <i>Anolis sagrei</i> | Jicarita, Cuba | AY655357 |
| <i>Anolis sagrei</i> | Jicarita, Cuba | AY655358 |
| <i>Anolis sagrei</i> | Jicarita, Cuba | AY655359 |
| <i>Anolis sagrei</i> | Jicarita, Cuba | AY655360 |
| <i>Anolis sagrei</i> | Mariel, Cuba | AY655361 |
| <i>Anolis sagrei</i> | Mariel, Cuba | AY655362 |
| <i>Anolis sagrei</i> | Mulata, Cuba | AY655363 |
| <i>Anolis sagrei</i> | Mulata, Cuba | AY655364 |
| <i>Anolis sagrei</i> | Mulata, Cuba | AY655365 |

| | | |
|----------------------|-------------------------|----------|
| <i>Anolis sagrei</i> | Mulata, Cuba | AY655366 |
| <i>Anolis sagrei</i> | Santa Lucia, Cuba | AY655367 |
| <i>Anolis sagrei</i> | Santa Lucia, Cuba | AY655368 |
| <i>Anolis sagrei</i> | Santa Lucia, Cuba | AY655369 |
| <i>Anolis sagrei</i> | Cortes, Cuba | AY655370 |
| <i>Anolis sagrei</i> | Cortes, Cuba | AY655371 |
| <i>Anolis sagrei</i> | Crooked Island, Bahamas | AY655372 |
| <i>Anolis sagrei</i> | Crooked Island, Bahamas | AY655373 |
| <i>Anolis sagrei</i> | San Salvador, Bahamas | AY655374 |
| <i>Anolis sagrei</i> | San Salvador, Bahamas | AY655375 |
| <i>Anolis sagrei</i> | San Salvador, Bahamas | AY655376 |
| <i>Anolis sagrei</i> | San Salvador, Bahamas | AY655377 |
| <i>Anolis sagrei</i> | Staniel Cay, Bahamas | AY655378 |
| <i>Anolis sagrei</i> | Staniel Cay, Bahamas | AY655379 |
| <i>Anolis sagrei</i> | Staniel Cay, Bahamas | AY655380 |
| <i>Anolis sagrei</i> | Staniel Cay, Bahamas | AY655381 |
| <i>Anolis sagrei</i> | Staniel Cay, Bahamas | AY655382 |
| <i>Anolis sagrei</i> | South Bimini, Bahamas | AY655383 |
| <i>Anolis sagrei</i> | South Bimini, Bahamas | AY655384 |
| <i>Anolis sagrei</i> | South Bimini, Bahamas | AY655385 |
| <i>Anolis sagrei</i> | Berry Islands, Bahamas | AY655386 |
| <i>Anolis sagrei</i> | Berry Islands, Bahamas | AY655387 |
| <i>Anolis sagrei</i> | Berry Islands, Bahamas | AY655388 |
| <i>Anolis sagrei</i> | Berry Islands, Bahamas | AY655389 |
| <i>Anolis sagrei</i> | South Andros, Bahamas | AY655390 |
| <i>Anolis sagrei</i> | South Andros, Bahamas | AY655391 |
| <i>Anolis sagrei</i> | South Andros, Bahamas | AY655392 |
| <i>Anolis sagrei</i> | South Andros, Bahamas | AY655393 |
| <i>Anolis sagrei</i> | Great Abaco, Bahamas | AY655394 |
| <i>Anolis sagrei</i> | Great Abaco, Bahamas | AY655395 |
| <i>Anolis sagrei</i> | Great Abaco, Bahamas | AY655396 |
| <i>Anolis sagrei</i> | Great Abaco, Bahamas | AY655397 |
| <i>Anolis sagrei</i> | Great Abaco, Bahamas | AY655398 |
| <i>Anolis sagrei</i> | Grand Bahama, Bahamas | AY655399 |
| <i>Anolis sagrei</i> | Grand Bahama, Bahamas | AY655400 |
| <i>Anolis sagrei</i> | Grand Bahama, Bahamas | AY655401 |
| <i>Anolis sagrei</i> | Grand Bahama, Bahamas | AY655402 |
| <i>Anolis sagrei</i> | Grand Bahama, Bahamas | AY655403 |
| <i>Anolis sagrei</i> | Exuma, Bahamas | AY655404 |
| <i>Anolis sagrei</i> | Exuma, Bahamas | AY655405 |
| <i>Anolis sagrei</i> | Exuma, Bahamas | AY655406 |

| | | |
|----------------------|-------------------------|----------|
| <i>Anolis sagrei</i> | Exuma, Bahamas | AY655407 |
| <i>Anolis sagrei</i> | Exuma, Bahamas | AY655408 |
| <i>Anolis sagrei</i> | Cayman Brac | AY655409 |
| <i>Anolis sagrei</i> | Cayman Brac | AY655410 |
| <i>Anolis sagrei</i> | Cayman Brac | AY655411 |
| <i>Anolis sagrei</i> | Cayman Brac | AY655412 |
| <i>Anolis sagrei</i> | Cayman Brac | AY655413 |
| <i>Anolis sagrei</i> | Cayman Brac | AY655414 |
| <i>Anolis sagrei</i> | Cayman Brac | AY655415 |
| <i>Anolis sagrei</i> | Cayman Brac | AY655416 |
| <i>Anolis sagrei</i> | Cayman Brac | AY655417 |
| <i>Anolis sagrei</i> | Cayman Brac | AY655418 |
| <i>Anolis sagrei</i> | Little Cayman | AY655419 |
| <i>Anolis sagrei</i> | Little Cayman | AY655420 |
| <i>Anolis sagrei</i> | Little Cayman | AY655421 |
| <i>Anolis sagrei</i> | Little Cayman | AY655422 |
| <i>Anolis sagrei</i> | Little Cayman | AY655423 |
| <i>Anolis sagrei</i> | Little Cayman | AY655424 |
| <i>Anolis sagrei</i> | Little Cayman | AY655425 |
| <i>Anolis sagrei</i> | Little Cayman | AY655426 |
| <i>Anolis sagrei</i> | Little Cayman | AY655427 |
| <i>Anolis sagrei</i> | Belize | AY655428 |
| <i>Anolis sagrei</i> | St. Catherine, Jamaica | AY655429 |
| <i>Anolis sagrei</i> | Portland, Jamaica | AY655430 |
| <i>Anolis sagrei</i> | Manchester, Jamaica | AY655431 |
| <i>Anolis sagrei</i> | Westmoreland, Jamaica | AY655432 |
| <i>Anolis sagrei</i> | Westmoreland, Jamaica | AY655433 |
| <i>Anolis sagrei</i> | Tampa, Florida | AY655434 |
| <i>Anolis sagrei</i> | Tampa, Florida | AY655435 |
| <i>Anolis sagrei</i> | Tampa, Florida | AY655436 |
| <i>Anolis sagrei</i> | Tampa, Florida | AY655437 |
| <i>Anolis sagrei</i> | Tampa, Florida | AY655438 |
| <i>Anolis sagrei</i> | Tampa, Florida | AY655439 |
| <i>Anolis sagrei</i> | Tampa, Florida | AY655440 |
| <i>Anolis sagrei</i> | Ocala, Florida | AY655441 |
| <i>Anolis sagrei</i> | Port Richey, Florida | AY655442 |
| <i>Anolis sagrei</i> | St. Petersburg, Florida | AY655443 |
| <i>Anolis sagrei</i> | St. Petersburg, Florida | AY655444 |
| <i>Anolis sagrei</i> | St. Petersburg, Florida | AY655445 |
| <i>Anolis sagrei</i> | Fort Myers, Florida | AY655446 |
| <i>Anolis sagrei</i> | Fort Myers, Florida | AY655447 |

| | | |
|----------------------|------------------------------|----------|
| <i>Anolis sagrei</i> | Naples, Florida | AY655448 |
| <i>Anolis sagrei</i> | Big Pine Key, Florida | AY655449 |
| <i>Anolis sagrei</i> | Big Pine Key, Florida | AY655450 |
| <i>Anolis sagrei</i> | Big Pine Key, Florida | AY655451 |
| <i>Anolis sagrei</i> | Lower Matecumbe Key, Florida | AY655452 |
| <i>Anolis sagrei</i> | Plantation Key, Florida | AY655453 |
| <i>Anolis sagrei</i> | Okeechobee, Florida | AY655454 |
| <i>Anolis sagrei</i> | Cape Canaveral, Florida | AY655455 |
| <i>Anolis sagrei</i> | Stock Island, Florida | AY655456 |
| <i>Anolis sagrei</i> | Red Road, Florida | AY655457 |
| <i>Anolis sagrei</i> | Pahokee, Florida | AY655458 |
| <i>Anolis sagrei</i> | Lake Worth, Florida | AY655459 |
| <i>Anolis sagrei</i> | Lake Worth, Florida | AY655460 |
| <i>Anolis sagrei</i> | Miami, Florida | AY655461 |
| <i>Anolis sagrei</i> | Grenada | AY655462 |
| <i>Anolis sagrei</i> | Grenada | AY655463 |
| <i>Anolis sagrei</i> | Taiwan | AY655464 |
| <i>Anolis sagrei</i> | Taiwan | AY655465 |
| <i>Anolis sagrei</i> | Turtle Farm, Grand Cayman | AY655466 |
| <i>Anolis sagrei</i> | Turtle Farm, Grand Cayman | AY655467 |
| <i>Anolis sagrei</i> | Turtle Farm, Grand Cayman | AY655468 |
| <i>Anolis sagrei</i> | South Coast, Grand Cayman | AY655469 |
| <i>Anolis sagrei</i> | South Coast, Grand Cayman | AY655470 |
| <i>Anolis sagrei</i> | South Coast, Grand Cayman | AY655471 |
| <i>Anolis sagrei</i> | Frank Sound, Grand Cayman | AY655472 |
| <i>Anolis sagrei</i> | Sunnyfield, Grand Cayman | AY655473 |
| <i>Anolis sagrei</i> | Sunnyfield, Grand Cayman | AY655474 |
| <i>Anolis sagrei</i> | Cayman Kai, Grand Cayman | AY655475 |
| <i>Anolis sagrei</i> | Cayman Kai, Grand Cayman | AY655476 |
| <i>Anolis sagrei</i> | Cayman Kai, Grand Cayman | AY655477 |
| <i>Anolis sagrei</i> | George Town, Grand Cayman | AY655478 |
| <i>Anolis sagrei</i> | Lanikai, Hawaii | AY655479 |
| <i>Anolis sagrei</i> | Hawaii Kai, Hawaii | AY655480 |
| <i>Anolis sagrei</i> | Hawaii Kai, Hawaii | AY655481 |
| <i>Anolis sagrei</i> | Lanikai, Hawaii | AY655482 |
| <i>Anolis sagrei</i> | Lanikai, Hawaii | AY655483 |
| <i>Anolis sagrei</i> | Lanikai, Hawaii | AY655484 |

Supplementary Information References and Notes:

- S1. SAS Institute, *JMP ver. 5.1* (SAS Institute, Cary, 2004)
- S2. Clement, M., Posada, D. & Crandall, K. A. TCS: a computer program to estimate gene genealogies. *Mol. Ecol.* **9**, 1657-1659 (2000).
- S3. Schneider, S., Roessli, D. & Excoffier, L. *Arlequin ver. 2.0: a software for population genetics data analysis* (Genetics and Biometry Laboratory, University of Geneva, Switzerland, 2000).
- S4. Losos, J. B., *pers. obs.*, National Museum of Natural History, Smithsonian Institution. It is unclear whether Jamaica was colonized naturally or resulted from human-mediated introductions, or was a combination of both.
- S5. Garman, S. On West Indian Iguanidae and on West Indian Scincidae in the collection of the Museum of Comparative Zoology at Cambridge, Mass., U.S.A. *Bull. Essex Inst.* **19**, 25-50 (1887).
- S6. Oliver, J. A. *Anolis sagrei* in Florida. *Copeia* **1950**, 55-56 (1950).
- S7. Bell, L. N. Notes on three subspecies of the lizard *Anolis sagrei* in southern Florida. *Copeia* **1953**, 63 (1953).
- S8. King, F. W. & Krakauer, T. The exotic herpetofauna of southeast Florida. *Quart. J. FL Acad. Sci.* **29**, 144-154 (1966).
- S9. Meylan, P. A. *Hemidactylus turcicus* (Mediterranean gecko). *Herpetol. Rev.* **8**, 39 (1977).
- S10. Godley, J. S., Lohrer, F. E., Layne, J. N. & Rossi, J. Distributional status of an introduced lizard in Florida: *Anolis sagrei*. *Herpetol. Rev.* **12**, 84-86 (1981).
- S11. Corwin, C. M., Linzey, A. V. & Linzey, D. W. *Anolis sagrei sagrei* (Cuban brown anole). *Herpetol. Rev.* **8**, 84 (1977).

- S12. Funk, R. S. & Moll, D. *Anolis sagrei* (Cuban brown anole). *Herpetol. Rev.* **10**, 102 (1979).
- S13. Myers, S. *Anolis sagrei* (brown anole). *Herpetol. Rev.* **9**, 107-108 (1978).
- S14. Wygoda, M. L. & Bain, J. R. *Anolis sagrei* (Cuban brown anole). *Herpetol. Rev.* **11**, 115 (1980).
- S15. Campbell, T. S. The introduced brown anole (*Anolis sagrei*) occurs in every county in peninsular Florida. *Herpetol. Rev.* **34**, 173-174 (2003).
- S16. McKeown, S. *A Field Guide to Reptiles and Amphibians in the Hawaiian Islands* (Diamond Head, Los Osos, CA, 1996).
- S17. Minton, S. A. & Minton, M. R. *Anolis sagrei* (brown anole). *Herpetol. Rev.* **15**, 77 (1984).
- S18. Lee, J. C. *Anolis sagrei* in Florida: phenetics of a colonizing species I. Meristic characters. *Copeia* **1985**, 182-194 (1985).
- S19. Cochran, P. A. *Anolis sagrei* (brown anole). *Herpetol. Rev.* **21**, 22 (1990).
- S20. Means, D. B. *Anolis sagrei* (brown anole). *Herpetol. Rev.* **21**, 96 (1990).
- S21. Campbell, T. S. Northern range expansion of the brown anole (*Anolis sagrei*) in Florida and Georgia. *Herpetol. Rev.* **27**, 155-157 (1996).
- S22. Stevenson, D. & Crowe, D. *Anolis sagrei* (brown anole). *Herpetol. Rev.* **23**, 89 (1992).
- S23. Campbell, T. S. & Hammontree, J. T. *Anolis sagrei* (brown anole). *Herpetol. Rev.* **26**, 107 (1995).
- S24. Means, D. B. *Anolis sagrei* (brown anole). *Herpetol. Rev.* **27**, 151-152 (1996).
- S25. Christman, S. P. *et al.* New records of amphibians and reptiles from Hardee County, Florida. *Herpetol. Rev.* **31**, 116-117 (2000).
- S26. Townsend, J. H., Krysko, K. L., Reppas, A. T. & Sheehy, III, C. M. Noteworthy records for introduced reptiles and amphibians from Florida, USA. *Herpetol. Rev.* **33**, 75 (2002).

- S27. Norval, G., Mao, J-J., Chu, H-P. & Chen, L-C. A new record of an introduced species, the brown anole (*Anolis sagrei*) in Taiwan. *Zool. Stud.* **41**, 332-336 (2002).
- S28. Greene, B. T., Yorks, D. T., Parmerlee, J. S., Powell, R. & Henderson, R. W. Discovery of *Anolis sagrei* in Grenada with comments of its potential impact on native anoles. *Carib. J. Sci.* **38**, 270-272 (2002).