

## Research



**Cite this article:** Kamath A, Losos JB. 2018 Estimating encounter rates as the first step of sexual selection in the lizard *Anolis sagrei*. *Proc. R. Soc. B* **285**: 20172244. <http://dx.doi.org/10.1098/rspb.2017.2244>

Received: 9 October 2017

Accepted: 29 January 2018

**Subject Category:**

Behaviour

**Subject Areas:**

behaviour

**Keywords:**

mating system, territory, territoriality, polygyny, anole, encounter rates

**Author for correspondence:**

Ambika Kamath

e-mail: [ambikamath@gmail.com](mailto:ambikamath@gmail.com)

<sup>†</sup>Present address: Department of Ecology, Evolution and Marine Biology, University of California Santa Barbara, Santa Barbara, CA 93106, USA.

<sup>‡</sup>Present address: Department of Biology, Washington University at St Louis, St Louis, MO 63130, USA.

Electronic supplementary material is available online at <https://dx.doi.org/10.6084/m9.figshare.c.3998220>.

# Estimating encounter rates as the first step of sexual selection in the lizard *Anolis sagrei*

Ambika Kamath<sup>†</sup> and Jonathan B. Losos<sup>‡</sup>

Department of Organismic and Evolutionary Biology and Museum of Comparative Zoology, Harvard University, 26 Oxford Street, Cambridge, MA 02138, USA

AK, 0000-0002-4012-0483

How individuals move through their environment dictates which other individuals they encounter, determining their social and reproductive interactions and the extent to which they experience sexual selection. Specifically, females rarely have the option of mating with all males in a population—they can only choose among the males they encounter. Further, quantifying phenotypic differences between the males that females encounter and those that sire females' offspring lends insight into how social and reproductive interactions shape male phenotypes. We used an explicitly spatio-temporal Markov chain model to estimate the number of potential mates of *Anolis sagrei* lizards from their movement behaviour, and used genetic paternity assignments to quantify sexual selection on males. Females frequently encountered and mated with multiple males, offering ample opportunity for female mate choice. Sexual selection favoured males that were bigger and moved over larger areas, though the effect of body size cannot be disentangled from last-male precedence. Our approach corroborates some patterns of sexual selection previously hypothesized in anoles based on describing them as territorial, whereas other results, including female multiple mating itself, are at odds with territorial polygyny, offering insight into discrepancies in other taxa between behavioural and genetic descriptions of mating systems.

## 1. Introduction

Sexual selection is a layered process, with animals sequentially having to overcome intrasexual competition, intersexual mating preferences, and, for males, postcopulatory competition and choice before achieving reproductive success [1,2]. Decades of research have spawned a vast literature on each of these aspects of sexual selection. However, the very first step of the mating sequence—encountering potential mates—is rarely quantified. How individuals move across space through time directly influences the number and phenotypic distribution of potential mates they encounter [2–4]. Moreover, by bringing about encounters between potential mates as well as between potential competitors, individuals' movement patterns set the stage for subsequent sexual selection through male–male competition and female choice [5,6]. Documenting animals' movement patterns, to understand how often and which members of the opposite sex are encountered by individuals, is thus fundamental to discovering the extent to which sexual selection can act in the wild. Concurrently, quantifying phenotypic differences between potential mates (individuals encountered) and actual mates (individuals whose offspring are borne) yields insight into the nature of selection imposed by social and reproductive interactions.

In particular, individuals' movement patterns determine the potential for female mate choice to drive sexual selection [7,8]. Female mate choice has been studied extensively, yielding vigorous debate surrounding the precise mechanisms by which it arises, acts and is maintained across a range of taxa

(reviewed in [9–11]). Common to all models of female choice, however, is the idea that females can choose among males. But whether and to what extent individual females in fact have such a choice, and therefore the extent to which female choice can drive sexual selection, depends in large part on how many males they encounter [3,12,13].

In studies of sexual selection, examinations of movement behaviour are often restricted to considering how females sample among males in taxa where female mate choice is already acknowledged to be important. For example, searching behaviour is often thought to be pertinent to sexual selection in species where females must visit and choose among males in leks or at fixed display sites (e.g. [8,14]). However, similar measurements of movement behaviour, and of encounters between potential mates, are equally relevant to understanding the opportunity for sexual selection in other animal species, including those where female choice is not usually considered a major selective pressure [13,15].

Unexpected opportunities for female choice are often uncovered in species in which earlier behavioural descriptions of mating systems, based on movement patterns and social interactions, are found to be inconsistent with more recent genetic descriptions of mating patterns [16]. For example, most birds were widely regarded as monogamous prior to the advent of genetic tools that revealed frequent extra-pair copulation [17]. Occasionally, these inconsistencies have prompted researchers to re-examine animal movement to reconcile behavioural and genetic descriptions of mating patterns (e.g. [18,19]). For example, tracking the movement behaviour of red deer revealed that females move long distances between harems unexpectedly often, demonstrating the possibility of female choice in a system where sexual selection was thought to be dominated by male–male competition [20]. In general, though, discrepancies between behavioural and genetic descriptions of mating systems remain common—consider how often species are described as ‘socially monogamous’, for example, but ‘genetically promiscuous’. These discrepancies imply that our descriptions of movement and social behaviours in many species remain incomplete or inaccurate, and we do not fully understand how sexual selection has shaped and is shaped by these behaviours.

In this paper, we develop an explicitly spatio-temporal approach to estimate encounters between potential mates from observations of the movement behaviour of male and female *Anolis sagrei* lizards. Our first goal is to investigate if females encounter multiple males, which could offer females the possibility of mate choice. This possibility has previously been considered unlikely in most anoles, which have widely been described as having a territorial social system in which males defend an exclusive, fixed space that contain female territories, implying that while males may mate with multiple females, most females mate with just the single male in whose territory they reside. This description of *Anolis* as territorial and polygynous persists despite genetic data revealing widespread female multiple mating (reviewed in [21]). Our second goal is to characterize sexual selection in this population by examining the predictors of male reproductive success at two levels. First we ask if the number of potential mates encountered by males is associated with their phenotype (the spatial extent of their movement and body size). Second, we test three hypotheses to understand

the phenotypic differences between potential mates and actual mates. We first examine if females bear offspring sired by the males they encounter more often [22]. Then, we ask if males encountered later in the breeding season are more likely to sire offspring than males encountered earlier (‘last-male precedence’; [23]). Finally, given widespread sexual selection in animals for larger males [24] as well as pronounced male-biased sexual size dimorphism in *A. sagrei*, we ask if females disproportionately bear offspring sired by larger males.

## 2. Methods

### (a) Field sampling and egg collection

*Anolis sagrei* is a low-perching arboreal lizard native to Cuba and the Bahamas that has been established in Florida for nearly a century [25,26]. Lizards were captured, marked and monitored to estimate their movement patterns in the University Gardens on the University of Florida campus in Gainesville, FL, from 4 March 2015 to 25 May 2015 between 09.00 and 18.00 hours. Sampling began at the start of the breeding season when lizard activity increased post-winter, and concluded at about the time when female *A. sagrei* began laying eggs (based on our 2014 observations of hatchlings appearing at the end of June, after an approximately month-long incubation period [27]). We caught most lizards within a 7140 m<sup>2</sup> area and marked captured individuals with unique bead tags [28], which allowed us to subsequently observe and identify individuals from a distance without disturbing them (in total, 4% of observations were of unmarked individuals). When captured, we measured each individual’s snout–vent length (SVL) as a measure of body size, and removed approximately 2–3 cm of tail tissue for genetic analysis. At each subsequent observation of a lizard, we noted its identity and the time of the observation. We avoided observing the same individual more frequently than once per hour, allowing ample time for lizards to resume normal behaviour if disturbed by us. At each observation, we also recorded the lizard’s spatial location (usually a tree; in areas of continuous vegetation, locations greater than 1 m apart were considered distinct). Locations at which lizards were seen were mapped by triangulation based on measuring distances between locations. We also mapped the locations of all trees within the site at which lizards were not observed; we could thus include all trees to which a lizard could potentially have moved in our estimations of movement patterns (electronic supplementary material, figure S1). Approximately once a month, we recaptured and remeasured males to estimate the average growth rate of males in this population.

At the end of the observation period, we captured 36 marked females and housed them singly under established anole husbandry conditions [29] until mid-November. Each cage contained a pot of soil in which the resident female laid eggs fertilized by sperm stored from her copulations in the field. Eggs were incubated for 2–10 days, after which embryos were dissected out for genetic analysis.

### (b) Movement pattern analysis

Analyses were carried out in R v. 3.3.2 [30]. We used a discrete-time Markov chain to model lizards’ movements between mapped locations. We divided daytime hours (08.00 to 20.00 hours; anoles are diurnal, so we assumed that the lizards did not move at night) over the sampling period (83 days) into 996 hour-long blocks. Observations were assigned to the bin closest to the time of the observation. Transition probabilities ( $P_{ij}$ ) between locations  $i$  and  $j$  were modelled as exponentially

declining with the distance between the locations ( $d_{ij}$ ), with rows of the transition matrix then normalized to sum to one ( $N$  is the total number of locations):

$$P_{ij} = \frac{e^{\lambda d_{ij}}}{\sum_{j=1}^N e^{\lambda d_{ij}}}. \quad (2.1)$$

In other words, lizards were modelled as less likely to move to distant locations than to close locations, with a total probability of 1 of moving from each location to *some* location within the site, including staying at the same location. The value of the exponential decline parameter  $\lambda$  was estimated by maximizing the likelihood of the observed data (including only pairs of consecutive observations of lizards, i.e. no assumptions were made while fitting the model regarding mortality or emigration after the last observation of a lizard) using the *bbmle* package [31]; separate models were fit for males and females.

Next, we used this Markov chain model describing the probabilities of lizards moving from one location to another to infer the probability that a lizard was at a particular location at a particular hour. Methodological details are provided in the electronic supplementary material, but briefly, this probability depended on both where that lizard was seen previously and where it was seen next. We thus calculated, for each lizard, a matrix of probabilities that the lizard occupied a particular location at a particular hour, for all locations and hours. Rows of this matrix were normalized to one. Then, we performed element-wise multiplication of pairs of these matrices to calculate the probability of co-occurrence at each one hour-long time bin, for every possible pair of lizards. Encounters were categorized for each pair at each hour ('yes/no') from these co-occurrence probabilities by setting cut-offs, i.e. pairs were classified as encountering one another if their co-occurrence probability was above the cut-off. We based cut-offs on the co-occurrence probabilities calculated for 'observed encounters', defined as pairs of lizards observed at the same location within an hour of one another. Cut-offs for classifying encounters between a pair of lizards depended on the connectedness of the locations at which these lizards were observed (i.e. the locations' proximity to nearby locations; see electronic supplementary material for details).

To quantify potential mating opportunities for each individual, we calculated the number of females encountered by each male and the number of males encountered by each female, as estimated by our model. The proportion of females that encounter multiple males and the mean number of males encountered by females reveal the extent to which multiple mating by females is possible in this population.

We quantified the spatial extent of an individual's movement by calculating the mean of the distances from each observation of the individual to the centroid of all observations of the individual (mean distance from the centroid). Lower mean distance from the centroid indicates smaller spatial extent. We jittered points randomly within a 0.5 m radius along both the  $X$  and  $Y$  axis of our site before calculating the mean distance from the centroid, to account for the 1 m resolution at which locations were mapped.

We estimated a growth curve for males by fitting a logistic equation using nonlinear least-squares regression [32] to males' SVL measured initially and at recaptures, pooling data across all recaptured males (see electronic supplementary material). We used this logistic growth curve to estimate the SVL of each male on the day of each of his inferred encounters, based on his SVL at the nearest capture, to test for sexual selection on male body size and for male avoidance of size-matched males (see below).

### (c) Parentage analysis

DNA was extracted from the 36 females housed in captivity, all 161 sampled males and 383 offspring using an AutogenPrep 965. Six microsatellite regions were amplified for these individuals (see electronic supplementary material, table S1 for primer and amplification protocol details; [33,34]). Alleles were scored manually after examining chromatogram peaks in Geneious v.10.0.9 [35].

Parentage analyses were performed in CERVUS v3.0.7 [36]. High proportions of null alleles were estimated at three loci (electronic supplementary material, table S1); following [37,38], we retained these loci in the analysis but typed apparent homozygotes at only one allele, with the other allele coded as missing. All offspring had known mothers, and males estimated to have encountered the mother of a given offspring were considered candidate sires for that offspring. Further analyses (reported in the electronic supplementary material) showed that simply restricting the number of candidate sires relative to the whole population did not inflate paternity assignments and that results of downstream analyses were unaffected by accounting for discordance between this analysis and an analysis where all males were provided as candidate fathers. In the simulation to determine log-likelihood ratio (LOD) cut-offs for paternity assignment, we provided a genotyping error rate of 0.01 (based on mother-offspring mismatch across all loci); the proportion of loci typed was 0.81. Simulations were run with 23 candidate sires and the proportion of sires typed set to 0.75, based on the maximum number of males encountered by any female in the population (17 males). These parameters were chosen after running preliminary analyses with simulations in which the proportion of sires typed was set to 0.25, 0.5 or 0.75, and the number of candidate sires set correspondingly to 68, 34 or 23; we chose the parameter combination with the closest match between the proportion of sires typed and the observed assignment rate [39].

### (d) Hypothesis testing

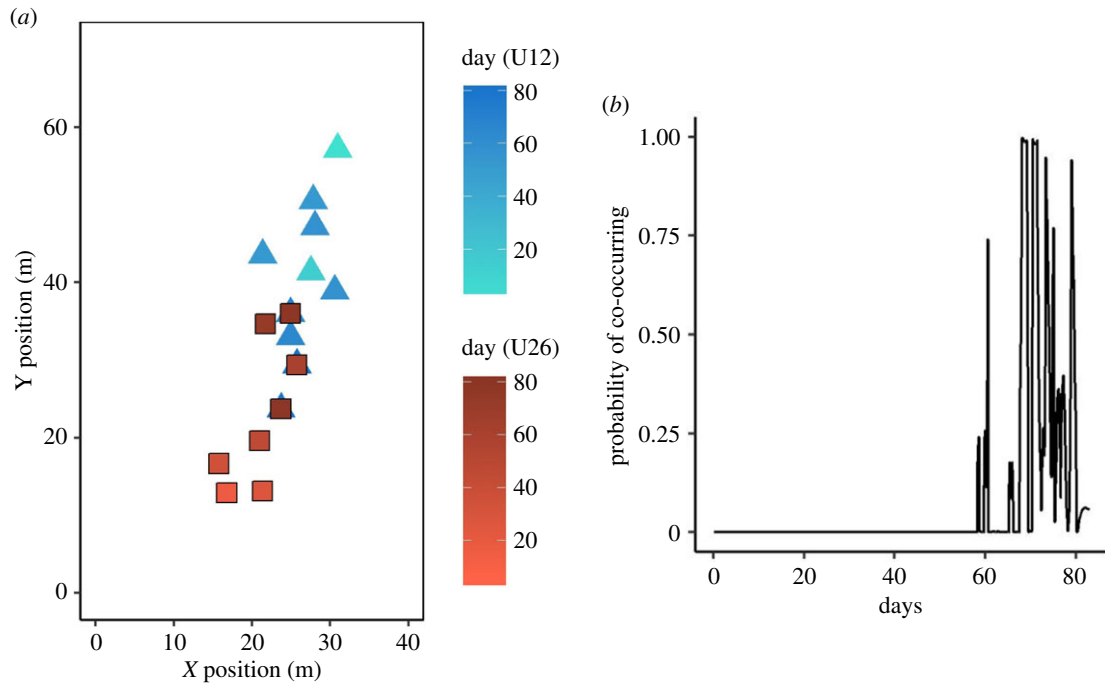
The number of potential mates encountered and the spatial extent (mean distance to the centroid) had right-skewed distributions, and were log-transformed before parametric analyses; SVL was analysed untransformed.  $T$ -tests and regressions were weighted by the number of observations per individual. We compared spatial extent between males and females using a  $t$ -test, and investigated if variation in males' spatial extent was related to body size, using a linear regression of the SVL at first capture versus the mean distance to the centroid.

Next, we examined if the number of females encountered by males varied with the spatial extent of males' movement (mean distance from the centroid) and with mean male body size at their encounters with females, using a multiple linear regression.

To assess if males avoided size-matched males, we compared the differences in estimated SVL between pairs of males estimated to encounter one another versus the differences in estimated SVL between randomly chosen pairs of males. For males that were estimated to encounter one another, we used the logistic growth curve to estimate their SVL on the day of the encounter. We initially sampled five random pairs per pair of males estimated to encounter one another, estimated their SVLs on the same day as the corresponding encounter and eliminated random pairs in which either individual had an estimated SVL less than the minimum observed SVL. We then repeated this random sampling a total of 3000 times to assess if the number of male-male encounters among size-matched males (estimated SVL difference of 0–2 mm) was significantly lower than expected by chance.

We used a resampling approach to examine whether (i) males who sired individual females' offspring encountered the mother significantly more often than males who encountered





**Figure 1.** Examples of the locations through time for two individuals, U12 and U26 (a), and the probability of their co-occurrence as estimated by the Markov chain model (b). Lighter colours indicate observations made earlier in the breeding season.

the same females but did not sire offspring (encounter rate hypothesis), (ii) males who sired individual females' offspring encountered those females later than males who encountered the same females but did not sire offspring (last-male precedence hypothesis) and (iii) males who sired individual females' offspring were bigger than males who encountered the same females but did not sire offspring (body size hypothesis).

We first calculated the difference between means of the number of encounters between male–female pairs for sires and non-sires across all offspring. We also calculated, for each male–female pair, the last hour at which the pair encountered one another and the maximum SVL estimated for the male across all encounters between the pair as a measure of male body size, and then calculated the difference between the mean hour of last encounter and the mean body size between sires and non-sires. We then recalculated these differences between means after randomly assigning each offspring a sire from the set of males that encountered the mother of that offspring. Random sire assignments were performed in two ways. To address the encounter rate hypothesis, we sampled uniformly from the list of males encountered by each mother. Then, to address the last-male precedence and body size hypotheses, we sampled in proportion to the rate at which each male encountered each mother. The former allowed us to test if sires encountered mothers more often than did non-sires, and the latter allowed us to test if later-encountered males and bigger males sired offspring more often than earlier-encountered males and smaller males, after accounting for variation across males in encounter rates. Each resampling was repeated 10 000 times.

### 3. Results

A total of 253 individuals (161 males, 92 females) were caught and marked during the sampling period, and were observed a total of 5629 times. The number of observations per individual ranged from one to 128; the median number of observations per individual was 11 for males and 15 for

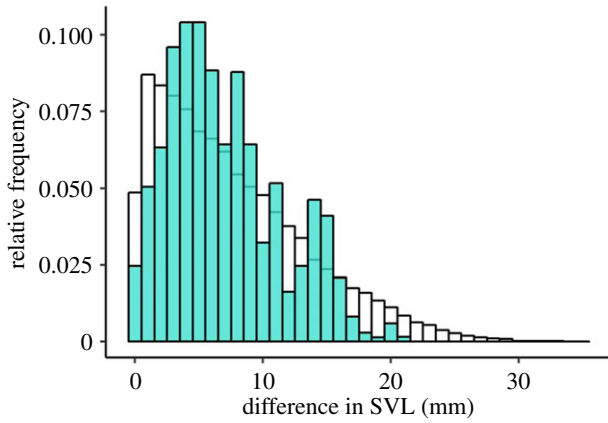
females. An example of two individuals' locations through time is shown in figure 1.

We used a Markov chain to model lizards' movements between locations in the site, where transition probabilities were modelled as exponentially declining with the distance between locations. We estimated  $\lambda$  values of  $-0.78$  for males and  $-1.27$  for females (see equation (2.1)), indicating that males were more likely than females to move longer distances. Using this Markov chain model to estimate individuals' movement patterns and thereafter the probabilities of their co-occurrence (see figure 1 for an example), we calculated that females encountered  $5.1 \pm 3.7$  males (mean  $\pm$  s.d.) and males encountered  $2.9 \pm 3.0$  females; 78% of females and 60% of males encountered multiple individuals of the opposite sex (electronic supplementary material, figure S4). Males encountered  $4.5 \pm 3.6$  other males.

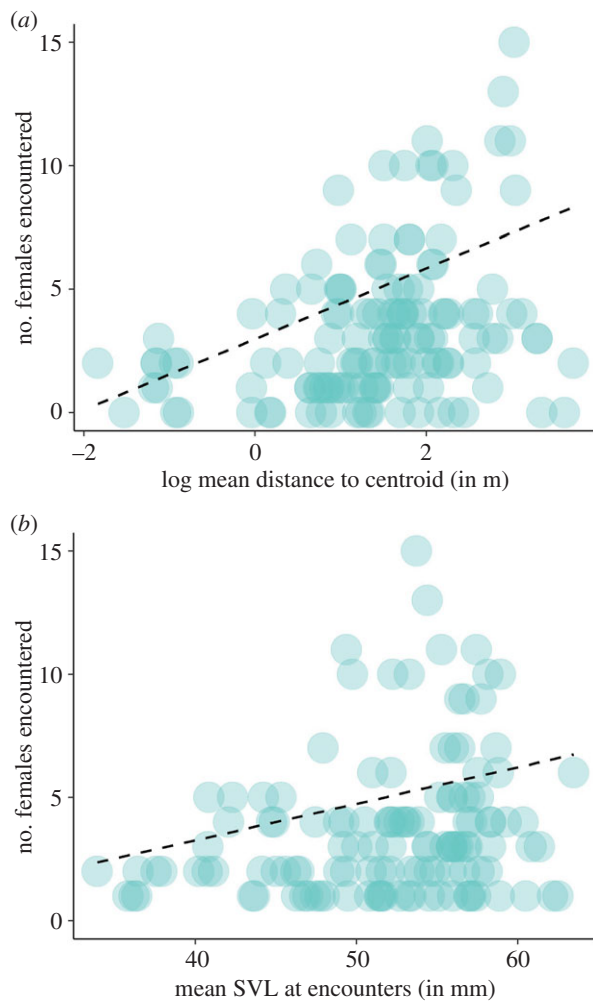
The mean distance from the centroid of all of an individual's locations ranged from 0.2 m to 41.3 m for males and from 0.2 m to 20.8 m for females (mean  $\pm$  standard deviation for males versus females:  $6.8 \pm 7.0$  m versus  $2.7 \pm 3.3$  m;  $t = 8.1$ , d.f. = 208.7,  $p < 0.001$ ). This measure of spatial extent was weakly associated with SVL at initial capture for males ( $r^2 = 0.04$ ,  $F_{1,135} = 4.91$ ,  $p = 0.03$ ).

To estimate male body size at their encounters with females using a logistic growth curve, we recaptured 68 males and remeasured their SVLs a total of 94 times, with  $32 \pm 15$  (mean  $\pm$  s.d.) days elapsed between measurements. The mean difference in estimated SVL between pairs of males estimated to encounter one another ( $7.1 \pm 4.5$  mm) was comparable to the mean difference between randomly chosen pairs of males ( $7.4 \pm 5.7$  mm). However, observed size differences were under-represented in the smallest (0–2 mm) category compared to random pairwise size differences (0.11 versus  $0.18 \pm 0.002$ ;  $p < 0.0003$ ; figure 2).

Males that encountered more females had a greater spatial extent ( $r^2 = 0.10$ ,  $F_{1,113} = 13.0$ ,  $p < 0.001$ ; figure 3) and were larger in size on average at their encounters with



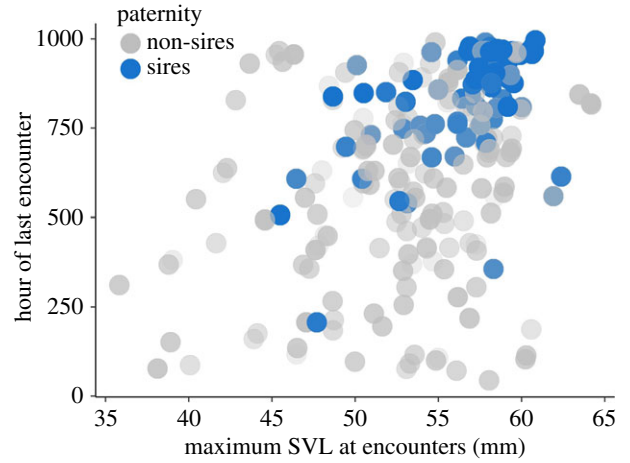
**Figure 2.** Estimated SVL differences between male pairs estimated to co-occur (coloured bars), compared with pairwise SVL differences between randomly chosen pairs of males, with random males' sizes estimated on the same days as the observed co-occurrences (white bars). (Online version in colour.)



**Figure 3.** Relationship between the number of females encountered by males and the males' spatial extent (*a*; measured as the mean distance to the centroid) and males' mean estimated SVL across encounters (*b*).

females ( $r^2 = 0.09$ ,  $F_{1,113} = 13.0$ ,  $p < 0.001$ ; figure 3); the interaction between spatial extent and SVL was not significant ( $r^2 = 0.0$ ,  $F_{1,113} = 0.03$ ,  $p = 0.87$ ).

Paternity was assigned to 84% of all offspring (323 individuals) at an 80% confidence level. We found that 64% of mothers bore offspring sired by more than one male; including offspring with unassigned sires, this proportion rose to 81%.



**Figure 4.** Maximum male snout–vent length (SVL) and the hour of last encounter for male–female pairs, coloured by whether or not the male sired any of the female's offspring. (Online version in colour.)

Using a resampling approach to calculate  $p$ -values, we found that sires of offspring encountered mothers significantly more often than did non-sires (mean number of encounters between mothers and sires:  $102 \pm 140$ ; non-sires:  $40 \pm 65$ ;  $p < 0.0001$ ). Accounting for variation across males in how often they encounter mothers, we found that sires encountered females significantly later than non-sires (mean  $\pm$  s.d. of the last hour of encounter for sires:  $892 \pm 110$ ; non-sires:  $605 \pm 258$ ;  $p < 0.0001$ ) and were significantly bigger than non-sires (mean  $\pm$  s.d. of the maximum male SVL across encounters for male–female pairs, for sires:  $57.8 \pm 3.0$  mm; non-sires:  $53.2 \pm 5.6$  mm;  $p < 0.0001$ ; figure 4).

## 4. Discussion

How animals move through space determines how many and which other individuals they encounter, setting the stage for all subsequent social and reproductive interactions and ultimately determining reproductive success. Understanding animals' movement patterns and the encounters they bring about is thus a key step in characterizing a population's mating system, and is essential for determining how behaviour both facilitates and is subject to sexual selection. Our spatio-temporal characterization of the movement patterns of a population of *A. sagrei* lizards revealed not only that a majority of males (60%) encountered multiple females but also that most females (78%) encountered multiple males over the first three months of the breeding season, indicating the potential in *A. sagrei* for complex polygynandrous mating patterns with ample scope for female choice.

Consistent with previous genetic descriptions of anole mating systems [40–42], we found that most females (64–81%) bore offspring sired by more than one male. However, our results are at odds with most previous behavioural descriptions of movement patterns and mating systems in *Anolis* lizards, which leaned heavily on, and were constrained by, the framework of territoriality (reviewed in [21]). These behavioural descriptions were often coupled with an implicit expectation that anoles mate in a strictly polygynous manner, i.e. males mate with multiple females, but females mate with just the one male in whose territory they reside. Consequently, field studies have often implied that the opportunity

for female choice in anoles is limited because it is precluded by territoriality (e.g. [43–45], but see [46]). Concurrently, despite varying evidence as to whether female choice is possible in natural populations, laboratory studies have offered females the choice between males to assess precopulatory mate preference [47–49] and have mated females with multiple males to assess postcopulatory sexual selection [50,51]. Our results indicate that female anoles definitely have the opportunity to exercise postcopulatory mate choice and might also exercise precopulatory mate choice, calling into question the utility of territorial polygyny as a description of these lizards' mating system.

Though rarely defined explicitly, territoriality is most often taken to mean the defence of an exclusive area in a fixed spatial location (reviewed in [52]). The inclusion of both exclusivity and site fidelity in the definition of territoriality is *necessary* for polygyny to be implied by territoriality. Departures from strict polygyny, as seen here and previously in anoles [40–42], imply departures from strict territoriality. While other definitions of territoriality, particularly those omitting site fidelity, could replace strict territoriality as a description of anole space use, these definitions do not imply strict polygyny, and indeed, make relatively few direct predictions about populations' mating systems. We suggest that rather than trying to shoehorn descriptions of behaviour into difficult-to-define concepts such as territoriality, we can reconcile widespread discrepancies between behavioural and genetic descriptions of mating systems by re-examining and quantifying animals' movement and social behaviours as sequential steps in the process of sexual selection.

In territorial species, such re-examinations could further prompt us to revisit explanations of behaviours that have long been interpreted as characteristic of territorial polygyny, to discern if they might also be consistent with female choice. For example, we found that males encounter size-matched males less often than expected at random, which is consistent with male body size determining the outcome of male–male fights over territory ownership and access to mates [53,54], and larger males subsequently excluding other large males from their territories [55,56]. In this context of territoriality, smaller males are hypothesized to evade detection by larger territorial males, residing in their territories and attempting to 'sneak' copulations with resident females. But in taxa where females choose mates based on male body size (as is possible here; see below), larger males that retain smaller neighbours can accrue a mating advantage compared to males with neighbours of equal size (e.g. [57,58]). Thus, males may engage in agonistic interactions to exclude size-matched but not smaller males from their vicinity, arranging themselves spatially relative to other males in a manner that raises their likelihood of being selected by females [59].

That said, our results support long-standing views about some facets of territoriality [52]. We found that males had a greater spatial extent than females, consistent with previous estimates of sex differences in territory size (e.g. [60,61]), and with evidence for male-biased dispersal in anoles [62,63]. But the spatial extent of individuals in this population is substantially higher than previous estimates of territory size in this and ecologically similar species (e.g. approximately 3 m<sup>2</sup> for females and approximately 10 m<sup>2</sup> to approximately 14 m<sup>2</sup> for males [60,64,65], compared with

mean minimum convex polygon areas of 36 m<sup>2</sup> for females and 225 m<sup>2</sup> for males in this study). Although it is possible that lizards in our site behaved unusually, the discrepancy may also partly be due to limited spatial and temporal sampling in previous studies, leading to underestimates of anole space use and interactions (reviewed in [21]). Indeed, subsampling from our dataset shows that if we had limited our spatial or temporal sampling extent to match the median sampling of previous studies, we would have detected a greatly reduced number of male–female pairs with overlapping home ranges (see electronic supplementary material). In sum, we posit that while certain tenets of territoriality are well-supported in anoles, previous studies have probably underestimated the complexity of *Anolis* lizards' movement patterns and social interactions by being constrained by a territorial framework. It remains unknown if similar problems afflict other species that have long been described as territorial.

Larger males not only encountered more females but were also more likely to sire offspring than smaller males, suggesting strong sexual selection for larger body size in male *A. sagrei*. These results are consistent with evidence across taxa that body size predicts male reproductive success [24]. However, most previous evidence in favour of this hypothesis in anoles is based on estimating mating patterns from the home range area and overlap within the framework of territoriality (e.g. [60,66,67]). Our results show that the pattern of sexual selection favouring larger males is recovered even without a territorial interpretation of these lizards' movement. As a species with largely indeterminate growth, body size can be an indicator of age [43,68], or the ability to survive and thrive, suggesting an adaptive reason for females to choose to mate with, or bear offspring sired by, larger males [69]. However, selection on body size is difficult to disentangle from last-male precedence [23]—because males are smaller at earlier times in the breeding season, it is possible that large males sire more offspring simply because they have encountered and mated with females more recently.

Additionally, sexual selection may act on movement behaviour—males with larger spatial extents encountered more females than males with smaller spatial extents. Because male body size and spatial extent were only very weakly correlated, the results do not indicate strong ontogenetic shifts in movement behaviour. Thus, it appears that there are multiple ways for males to achieve reproductive success—they can grow large, they can traverse large areas, or both [70].

However, understanding the combined effects of body size, spatial extent and last-male precedence is not necessarily straightforward—a single movement or mating strategy is unlikely to be adaptive in the face of social complexity. Instead, animals may make decisions about movement depending on their social and environmental context, rather than of adopting fixed patterns of space use [5,7,8]. Such context-dependent decision-making is often referred to as the maintenance of 'alternative mating strategies', though this variation need not be strictly discrete (e.g. [70,71]). Individual-based models that incorporate the various sequential, compounding influences on reproductive success could reveal if males can make adaptive, context-dependent decisions to move or stay at particular locations based on their phenotype and the social and environmental situations they find themselves in.



Discerning if the decision rules used by individuals in a species are consistent across habitats and populations may represent a promising way of describing animal mating systems [72,73]. In the future, sampling across populations and species that vary in density, sex ratio and habitat structure will be essential to understanding how animals' decision rules regarding movement shape their mating system. The Markov chain approach to modelling movement patterns and estimating interactions presented here could be improved in such studies by incorporating both social and environmental variation influencing these decision rules—transition probabilities between locations could be scaled according to habitat preferences or the occupancy of a location by specific individuals, for example. At present, the accuracy of our estimation of encounters is limited by modelling movements as only based on distances between locations. Moreover, our approach is restricted to taxa that move relatively infrequently between relatively discrete locations, and cannot be readily modified for taxa with more continuous movement.

Finer spatial and temporal scales of location sampling, made possible with automated methods of tracking animals in the wild [74], could also allow for individual-level parametrization of any movement model, and would almost certainly improve the accuracy with which encounters are estimated. At present, a majority of the encounters (approx. 70%) estimated by our model occur on the same day as a known observation of a lizard in the pair. This suggests that our model does not extrapolate unreasonably, but also shows that our discovery of these animals' behaviour remains limited by sampling. Ultimately, however, even finer scale location sampling will be insufficient for determining which encounters in fact lead to matings—discovering this crucial aspect of animals' behaviour will depend on focal animal observations of encounters in natural or naturalistic conditions. For a male, the gap between encountering a female and siring her offspring can include the sequential gauntlets of male–male competition, female mating preferences, and postcopulatory competition and choice [1,2]. Disentangling effects on mating success at these various levels will be

essential to fully understanding how sexual selection shapes behaviour, and will require close observation of animal interactions prior to and including mating [75–77].

However, movement behaviour is a precursor to bringing about any of these interactions—it comprises the first step of sexual selection and its quantification is therefore necessary for understanding the shape that sexual selection can take. In this paper, we develop a spatio-temporal framework to quantify movement behaviour to estimate encounters between potential mates. This framework reveals an infrequently recognized opportunity for female mate choice in *Anolis sagrei*, demonstrates that larger males are favoured across multiple levels of sexual selection, and shows evidence for sexual selection on movement behaviour and the timing of male–female encounters. We hope that similar frameworks centred on movement behaviour can help to organize disparate studies that approach sexual selection at different levels in a variety of animal taxa.

**Ethics.** This work was carried out under permit EXOT-15-09 from the U.S. Fish and Wildlife Service, and all procedures were approved under IACUC Protocol 26-11.

**Data accessibility.** Data and code have been uploaded to Dryad (<http://dx.doi.org/10.5061/dryad.kt387>) [78] and are currently available on GitHub (<https://github.com/ambikamath/anolismovt>).

**Authors' contributions.** A.K. and J.B.L. designed the study. A.K. collected data and performed analyses. A.K. and J.B.L. wrote the manuscript.

**Competing interests.** We declare we have no competing interests.

**Funding.** This project was funded by a Young Explorers Grant from the National Geographic Society, a student research grant from the Animal Behavior Society, the Robert A. Chapman Memorial Scholarship from Harvard University and the John Templeton Foundation.

**Acknowledgements.** Jonathan Suh, Claire Dufour, Rachel Moon, Bonnie Kircher and Barbara Tamires de Silveira assisted with data collection. Thom Sanger, Tom Wichman, Steve Johnson and Stuart McDaniel provided logistical support. Thom Sanger additionally advised on lizard husbandry and embryo collection. Hanna Wegener, Jason Kolbe, Anthony Geneva and Pavitra Muralidhar advised on the genetic methods and analyses. Ben de Bivort, Edward Burnell and Colin Donihue advised on the statistical analyses and, along with Yoel Stuart, Pavitra Muralidhar, Locke Rowe, Meera Lee Sethi, Cyndi Casey and several anonymous reviewers, provided comments that improved the manuscript.

## References

- Wiley RH, Poston J. 1996 Indirect mate choice, competition for mates, and coevolution of the sexes. *Evolution* **50**, 1371–1381. (doi:10.1111/j.1558-5646.1996.tb03911.x)
- Bonduriansky, R. 2003 Layered sexual selection: a comparative analysis of sexual behaviour within an assemblage of piophilid flies. *Can. J. Zool.* **81**, 479–491. (doi:10.1139/z03-031)
- Wagner Jr WE. 1998 Measuring female mating preferences. *Anim. Behav.* **55**, 1029–1042. (doi:10.1006/anbe.1997.0635)
- Kvarnemo C, Simmons L. 2013 Polyandry as a mediator of sexual selection before and after mating. *Phil. Trans. R. Soc. B* **368**, 20120042. (doi:10.1098/rstb.2012.0042)
- Uy JAC, Patricelli GL, Borgia G. 2000 Dynamic mate-searching tactic allows female satin bowerbirds *Ptilonorhynchus violaceus* to reduce searching. *Proc. R. Soc. Lond. B* **267**, 251–256. (doi:10.1098/rsbp.2000.0994)
- Jones AG. 2009 On the opportunity for sexual selection, the Bateman gradient and the maximum intensity of sexual selection. *Evolution* **63**, 1673–1684. (doi:10.1111/j.1558-5646.2009.00664.x)
- Dunn PO, Whittingham LA. 2006 Search costs influence the spatial distribution, but not the level, of extra-pair mating in tree swallows. *Behav. Ecol. Sociobiol.* **61**, 449–454. (doi:10.1007/s00265-006-0272-3)
- DuVal EH, Kapoor JA. 2015 Causes and consequences of variation in female mate search investment in a lekking bird. *Behav. Ecol.* **26**, 1537–1547. (doi:10.1093/beheco/arv110)
- Jones AG, Ratterman NL. 2009 Mate choice and sexual selection: what have we learned since Darwin? *Proc. Natl Acad. Sci. USA* **106**, 10 001–10 008. (doi:10.1073/pnas.0901129106)
- Dougherty LR, Shuker DM. 2015 The effect of experimental design on the measurement of mate choice: a meta-analysis. *Behav. Ecol.* **26**, 311–319. (doi:10.1093/beheco/aru125)
- Firman RC, Gasparini C, Manier MK, Pizzari T. 2017 Postmating female control: 20 years of cryptic female choice. *Trends Ecol. Evol.* **32**, 368–382. (doi:10.1016/j.tree.2017.02.010)
- Morris MR. 1989 Female choice of large males in the treefrog *Hyla chrysoscelis*: the importance of identifying the scale of choice. *Behav. Ecol. Sociobiol.* **25**, 275–281. (doi:10.1007/BF00300054)
- Roff DA. 2015 The evolution of mate choice: a dialogue between theory and experiment. *Ann. NY Acad. Sci.* **1360**, 1–15. (doi:10.1111/nyas.12743)

14. Real L. 1990 Search theory and mate choice. I. Models of single-sex discrimination. *Am. Nat.* **136**, 376–405. (doi:abs/10.1086/285103)
15. Shuker DM, Day TH. 2002 Mate sampling and the sexual conflict over mating in seaweed flies. *Behav. Ecol.* **13**, 83–86. (doi:10.1093/beheco/13.1.83)
16. Hughes C. 1998 Integrating molecular techniques with field methods in studies of social behavior: a revolution results. *Ecology* **79**, 383–399. (doi:10.1890/0012-9658(1998)079[0383:IMTWFJ]2.0.CO;2)
17. Griffith SC, Owens IPF, Thuman KA. 2002 Extra pair paternity in birds: a review of interspecific variation and adaptive function. *Mol. Ecol.* **11**, 2195–2212. (doi:10.1046/j.1365-294X.2002.01613.x)
18. Double M, Cockburn A. 2000 Pre-dawn infidelity: females control extra-pair mating in superb fairy-wrens. *Proc. R. Soc. Lond. B* **267**, 465–470. (doi:10.1098/rspb.2000.1023)
19. Thom MD, MacDonald DW, Mason GJ, Pedersen V, Johnson PJ. 2004 Female American mink, *Mustela vison*, mate multiply in a few choice environment. *Anim. Behav.* **67**, 975–984. (doi:10.1016/j.anbehav.2003.09.008)
20. Stopher KV, Nussey DH, Clutton-Brock TH, Guinness F, Morris A, Pemberton JM. 2011 The red deer rut revisited: female excursions but no evidence females move to mate with preferred males. *Behav. Ecol.* **22**, 808–818. (doi:10.1093/beheco/arr052)
21. Kamath A, Losos JB. 2017 The erratic and contingent progression of research on territoriality: a case study. *Behav. Ecol. Sociobiol.* **71**, 89. (doi:10.1007/s00265-017-2319-z)
22. Kokko H, Mappes J. 2012 Multiple mating by females is a natural outcome of a null model of mate encounters. *Entomol. Exp. Appl.* **146**, 26–37. (doi:10.1111/j.1570-7458.2012.01296.x)
23. Birkhead TR, Hunter FM. 1990 Mechanisms of sperm competition. *Trends Ecol. Evol.* **5**, 48–52. (doi:10.1016/0169-5347(90)90047-H)
24. Andersson M. 1994 *Sexual selection*. Princeton, NJ: Princeton University Press.
25. Kolbe JJ, Glor RE, Rodríguez-Schettino L, Chamizo Lara AR, Larson A, Losos JB. 2004 Genetic variation increases during biological invasion by a Cuban lizard. *Nature* **431**, 177–181. (doi:10.1038/nature02807)
26. Kolbe JJ, Larson A, Losos JB, de Queiroz K. 2008 Admixture determines genetic diversity and population differentiation in the biological invasion of a lizard species. *Biol. Lett.* **4**, 434–437. (doi:10.1098/rsbl.2008.0205)
27. Sanger TJ, Losos JB, Gibson-Brown JJ. 2007 A developmental staging series for the lizard genus *Anolis*: a new system for the integration of evolution, development, and ecology. *J. Morph.* **269**, 129–137. (doi:10.1002/jmor.10563)
28. Fisher M, Muth A. 1989 A technique for permanently marking lizards. *Herpetol. Rev.* **20**, 45–46.
29. Sanger TJ, Hime PM, Johnson MJ, Diani J, Losos JB. 2008 Laboratory protocols for husbandry and embryo collection of *Anolis* lizards. *Herpetol. Rev.* **39**, 58–63.
30. R Core Team. 2016 *R: a language and environment for statistical computing*. Vienna, Austria: R Foundation for Statistical Computing.
31. Bolker B, R Development Core Team. 2016 *bbmle: tools for general maximum likelihood estimation*. R package version 1.0.18. See <https://CRAN.R-project.org/package=bbmle>.
32. Schoener TW, Schoener A. 1978 Estimating and interpreting body-size growth in some *Anolis* lizards. *Copeia* **1978**, 390–405. (doi:10.2307/1443602)
33. Bardeleben C, Palchevskiy V, Calsbeek R, Wayne RK. 2004 Isolation of polymorphic tetranucleotide microsatellite markers for the brown anole (*Anolis sagrei*). *Mol. Ecol. Notes* **4**, 176–178. (doi:10.1111/j.1471-8286.2004.00602.x)
34. Wordley C, Slate J, Stapley J. 2011 Mining online genomic resources in *Anolis carolinensis* facilitates rapid and inexpensive development of cross-species microsatellite markers for the *Anolis* lizard genus. *Mol. Ecol. Resour.* **11**, 126–133. (doi:10.1111/j.1755-0998.2010.02863.x)
35. Kearse M *et al.* 2012 Geneious Basic: an integrated and extendable desktop software platform for the organization and analysis of sequence data. *Bioinformatics* **28**, 1647–1649. (doi:10.1093/bioinformatics/bts199)
36. Kalinowski ST, Taper ML, Marshall TC. 2007 Revising how the computer program CERVUS accommodates genotyping error increases success in paternity assignment. *Mol. Ecol.* **16**, 1099–1106. (doi:10.1111/j.1365-294X.2007.03089.x)
37. Le Bas NR. 2001 Microsatellite determination of male reproductive success in a natural population of the territorial ornate dragon lizard, *Ctenophorus ornatus*. *Mol. Ecol.* **10**, 193–203. (doi:10.1046/j.1365-294X.2001.01174.x)
38. Husak JF, Fox SF, Lovern MB, van den Bussche RA. 2006 Faster lizards sire more offspring: sexual selection on whole-animal performance. *Evolution* **60**, 2122–2130. (doi:10.1111/j.0014-3820.2006.tb01849.x)
39. Rasmussen HB, Okello JBA, Wittemyer G, Siegmund HR, Arctander P, Vollrath F, Douglas-Hamilton I. 2008 Age- and tactic-related paternity success in male African elephants. *Behav. Ecol.* **19**, 9–15. (doi:10.1093/beheco/arm093)
40. Passek KM. 2002 Extra-pair paternity within the female-defense polygyny of the lizard, *Anolis carolinensis*: evidence of alternative mating strategies. PhD thesis, Virginia Polytechnic Institute, Blacksburg, VA.
41. Johnson MA. 2007 Behavioral ecology of Caribbean *Anolis* lizards: a comparative approach. PhD thesis, Washington University, St Louis, MO.
42. Calsbeek R, Bonneaud C, Prabhu S, Manoukis N, Smith TB. 2007 Multiple paternity and sperm storage lead to increased genetic diversity in *Anolis* lizards. *Evol. Ecol. Res.* **9**, 495–503.
43. Schoener TW, Schoener A. 1980 Densities, sex ratios, and population structure in four species of Bahamian *Anolis* lizards. *J. Anim. Ecol.* **49**, 19–53. (doi:10.2307/4276)
44. Stamps JA. 1983 Sexual selection, sexual dimorphism, and territoriality. In *Lizard ecology* (eds R Huey, ER Pianka, TW Schoener), pp 169–204. Cambridge, MA: Harvard University Press.
45. Jennsen TA, Lovern MB, Congdon JD. 2001 Field-testing the protandry based mating system for the lizard, *Anolis carolinensis*: does the model organism have the right model? *Behav. Ecol. Sociobiol.* **50**, 162–172. (doi:10.1007/s002650100349)
46. Tokarz RR. 1998 Mating pattern in the lizard *Anolis sagrei*: implications for mate choice and sperm competition. *Herpetologica* **54**, 388–394.
47. Andrews RM. 1985 Male choice by females of the lizard, *Anolis carolinensis*. *J. Herpetol.* **19**, 284–289. (doi:10.2307/1564183)
48. Lailvaux SP, Irschick DJ. 2006 No evidence for female association with high-performance males in the green anole lizard, *Anolis carolinensis*. *Ethology* **112**, 707–715. (doi:10.1111/j.1439-0310.2006.01210.x)
49. Flanagan SP, Bevier CR. 2014 Do male activity level and territory quality affect female association time in the brown anole, *Anolis sagrei*? *Ethology* **120**, 365–374. (doi:10.1111/eth.12213)
50. Calsbeek R, Bonneaud C. 2008 Postcopulatory fertilization bias as a form of cryptic sexual selection. *Evolution* **62**, 1137–1148. (doi:10.1111/j.1558-5646.2008.00356.x)
51. Cox RM, Calsbeek R. 2010 Cryptic sex-ratio bias provides indirect genetic benefits despite sexual conflict. *Science* **328**, 92–94. (doi:10.1126/science.1185550)
52. Maher CR, Lott DF. 1995 Definitions of territoriality used in the study of variation in vertebrate spacing systems. *Anim. Behav.* **49**, 1581–1597. (doi:10.1016/0003-3472(95)90080-2)
53. Tokarz RR. 1985 Body size as a factor determining dominance in staged agonistic encounters between male brown anoles (*Anolis sagrei*). *Anim. Behav.* **33**, 746–753. (doi:10.1016/S0003-3472(85)80006-3)
54. Jennsen TA, Decourcy DA, Congdon JD. 2005 Assessment in contests of male lizards (*Anolis carolinensis*): how should smaller males respond when size matters? *Anim. Behav.* **69**, 1325–1336. (doi:10.1016/j.anbehav.2004.07.023)
55. Trivers RL. 1976 Sexual selection and resource-acquiring abilities in *Anolis garmani*. *Evolution* **30**, 253–269. (doi:10.1111/j.1558-5646.1976.tb00908.x)
56. Fleishman LJ. 1988 The social behavior of *Anolis auratus*, a grass anole from Panama. *J. Herpetol.* **22**, 13–23. (doi:10.2307/1564352)
57. Callander S, Jennions MD, Backwell PRY. 2011 Female choice over short and long distances: neighbour effects. *Behav. Ecol. Sociobiol.* **65**, 2071–2078. (doi:10.1007/s00265-011-1216-0)
58. Callander S, Hayes CL, Jennions MD, Backwell PRY. 2012 Experimental evidence that immediate neighbors affect male attractiveness. *Behav. Ecol.* **24**, 730–733. (doi:10.1093/beheco/ars208)
59. Höglund J, Johansson T, Pelabon C. 1997 Behaviourally mediated sexual selection: characteristics of successful male black grouse.



- Anim. Behav.* **54**, 255–264. (doi:10.1006/anbe.1996.0459)
60. Schoener TW, Schoener A. 1982 Intraspecific variation in home-range size in some *Anolis* lizards. *Ecology* **63**, 809–823. (doi:10.2307/1936801)
61. Jenssen TA, Nunez SC. 1998 Spatial and breeding relationships of the lizard, *Anolis carolinensis*: evidence of intrasexual selection. *Behaviour* **135**, 981–1003. (doi:10.1163/156853998792640341)
62. Johansson H, Surget-Groba Y, Thorpe RS. 2008 Microsatellite data show evidence for male-biased dispersal in the Caribbean lizard *Anolis roquet*. *Mol. Ecol.* **17**, 4425–4432. (doi:10.1111/j.1365-294X.2008.03923.x)
63. Calsbeek R. 2009 Sex-specific adult dispersal and its selective consequences in the brown anole, *Anolis sagrei*. *J. Anim. Ecol.* **78**, 617–624. (doi:10.1111/j.1365-2656.2009.01527.x)
64. Rand AS. 1967 Ecology and social organization in the iguanid lizard *Anolis lineatopus*. *Proc. U.S. Nat. Mus.* **122**, 1–79. (doi:10.5479/si.00963801.122-3595.1)
65. Calsbeek R, Marnocha E. 2006 Context dependent territory defense: the importance of habitat structure in *Anolis sagrei*. *Ethology* **112**, 537–543. (doi:10.1111/j.1439-0310.2006.01194.x)
66. Losos JB. 2009 *Lizards in an evolutionary tree*. Berkeley, CA: University of California Press.
67. Ruby DE. 1984 Male breeding success and differential access to females in *Anolis carolinensis*. *Herpetologica* **40**, 272–280.
68. Stamps JA. 1993 Sexual size dimorphism in species with asymptotic growth after maturity. *Biol. J. Linn. Soc.* **50**, 123–145. (doi:10.1006/bijl.1993.1050)
69. Cooper Jr WE, Vitt LJ. 1993 Female mate choice of large male broad-headed skinks. *Anim. Behav.* **45**, 683–693. (doi:10.1006/anbe.1993.1083)
70. Noble DWA, Wechmann K, Keogh JS, Whiting MJ. 2013 Behavioral and morphological traits interact to promote the evolution of alternative reproductive tactics in a lizard. *Am. Nat.* **182**, 726–742. (doi:10.1086/673535)
71. Shine R, Langkilde T, Wall M, Mason RT. 2005 Alternative male mating tactics in garter snakes, *Thamnophis sirtalis parietalis*. *Anim. Behav.* **70**, 387–396. (doi:10.1016/j.anbehav.2005.04.001)
72. Kirkpatrick M, Rand AS, Ryan MJ. 2006 Mate choice rules in animals. *Anim. Behav.* **71**, 1215–1225. (doi:10.1016/j.anbehav.2005.11.010)
73. Patricelli GL, Krakauer AH, McElreath R. 2011 Assets and tactics in a mating market: economic models of negotiation offer insights into animal courtship dynamics on the lek. *Curr. Zool.* **57**, 225–236. (doi:10.1093/zoolo/57.2.225)
74. Kays R, Crofoot MC, Jetz W, Wikelski M. 2015 Terrestrial animal tracking as an eye on life and planet. *Science* **348**, aaa2478. (doi:10.1126/science.aaa2478)
75. Wong BB, Candolin U. 2005 How is female mate choice affected by male competition. *Biol. Rev. Camb. Philos. Soc.* **80**, 559–571. (doi:10.1017/S1464793105006809)
76. Stapley J. 2008 Female mountain log skinks are more likely to mate with males that court more, not males that are dominant. *Anim. Behav.* **75**, 529–538. (doi:10.1016/j.anbehav.2007.05.017)
77. Engqvist L. 2009 Should I stay or should I go? Condition- and status-dependent courtship decisions in the scorpionfly *Panorpa cognata*. *Anim. Behav.* **78**, 491–497. (doi:10.1016/j.anbehav.2009.05.021)
78. Kamath A, Losos JB. 2018 Data from: Estimating encounter rates as the first step of sexual selection in the lizard *Anolis sagrei*. Dryad Digital Repository. (<http://dx.doi.org/10.5061/dryad.kt387>)