

New Class

Introduction to Health Disparities and the Structural and Social Determinants of Health

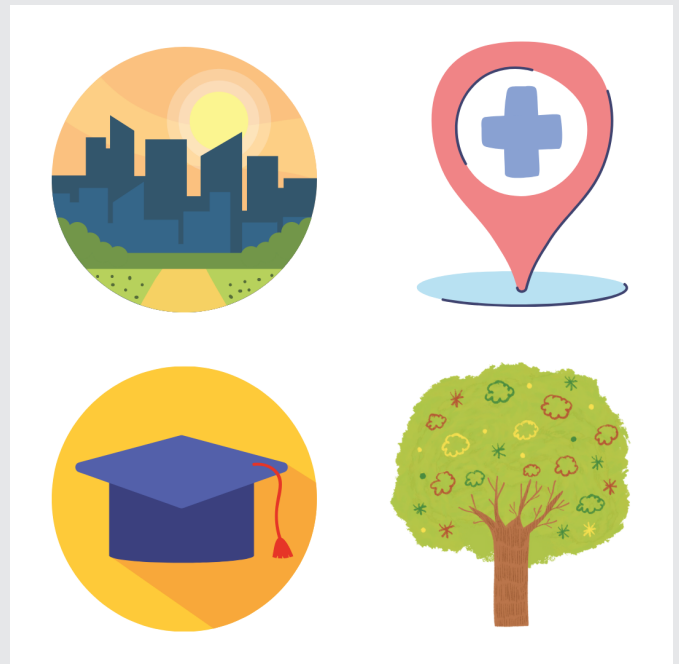
Fall 2022

Thursdays, 1:00 p.m. - 3:00 p.m.

This course explores how structural and social determinants of health (SSDoH) produce and maintain health disparities.

Learn from expert guest lectures on cutting-edge research, key foundational and recent readings related to SSDoH and health disparities, and case studies. You'll complete a research proposal to apply what we've learned to real-life situations. By the end of the course, you will be able to:

- 1) Define health disparities
- 2) Explain how social and structural determinants of health – including interpersonal and structural racism – produce and maintain health disparities across each phase of disease development
- 3) and Identify strategies for assessing and addressing health disparities in your own research.



Instructors:



Bettina Drake, PhD, MPH
Professor of Surgery
Division of Public Health Sciences



Erika Waters, PhD, MPH
Professor of Surgery
Division of Public Health Sciences