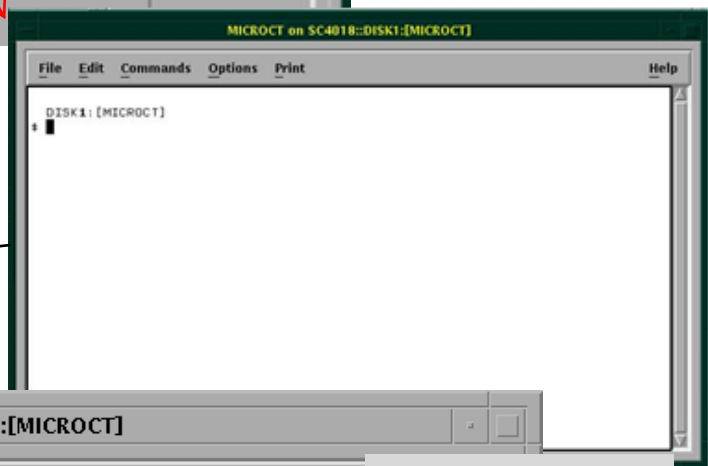
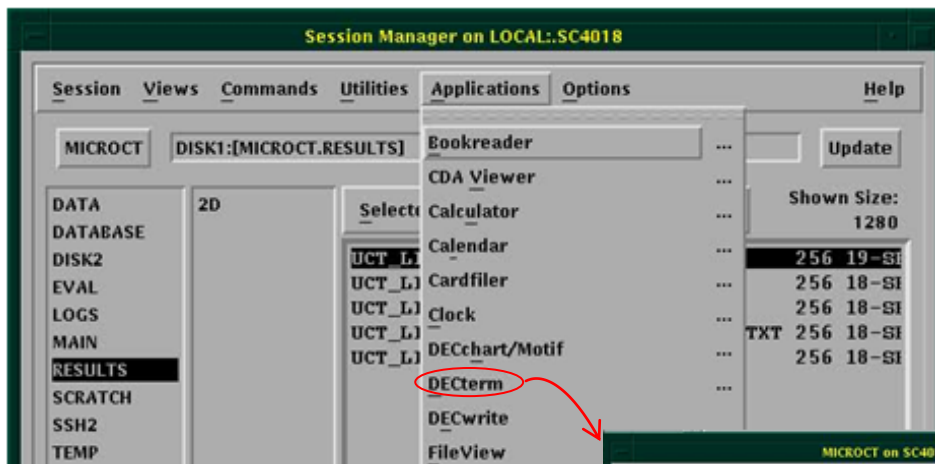
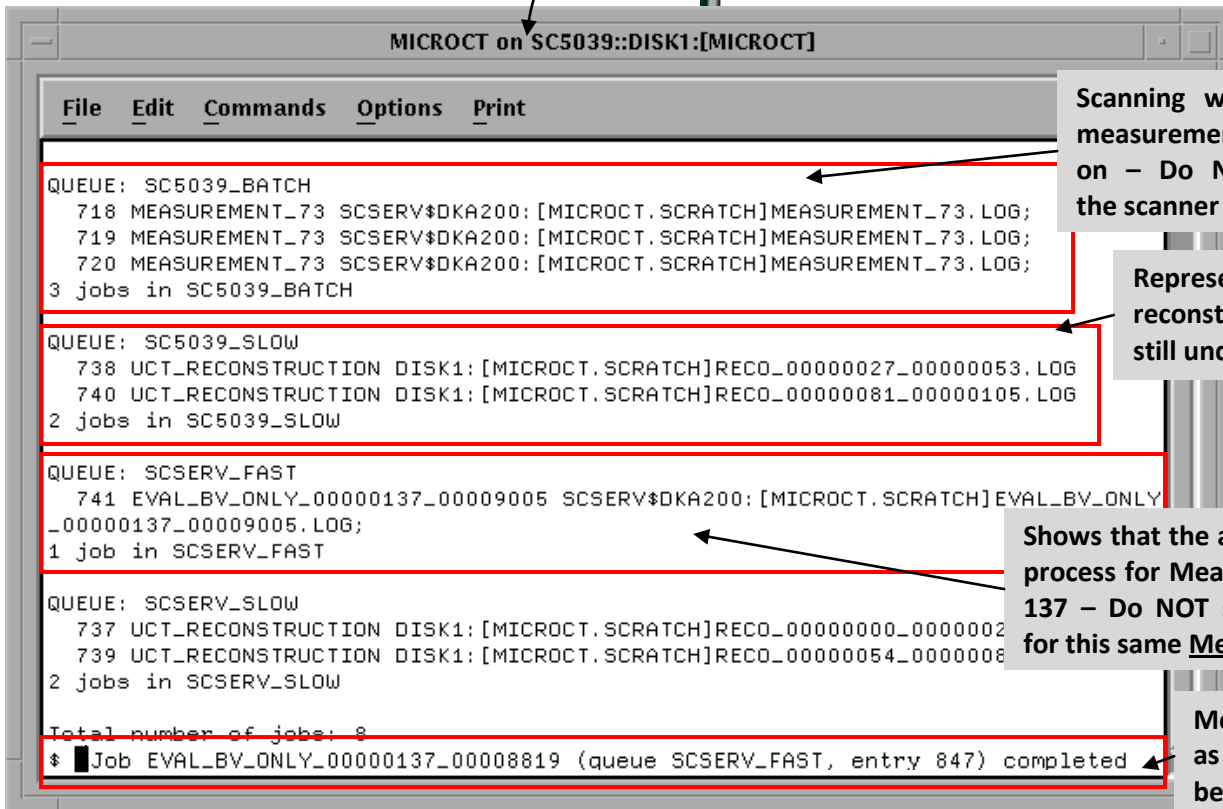


Open DECTerm Window (also called Terminal Session Window):

In the Session Manager, Applications → DECTerm



Typing \$ **que** in the window to check the status of jobs



Scanning with batch measurement is going on – Do NOT open the scanner door.

Represents the reconstruction of images is still under process.

Shows that the analysis job is under process for Meas. # 9005 of Sample 137 – Do NOT submit another job for this same Measurement #.

Message will appear as the analysis job will be completed