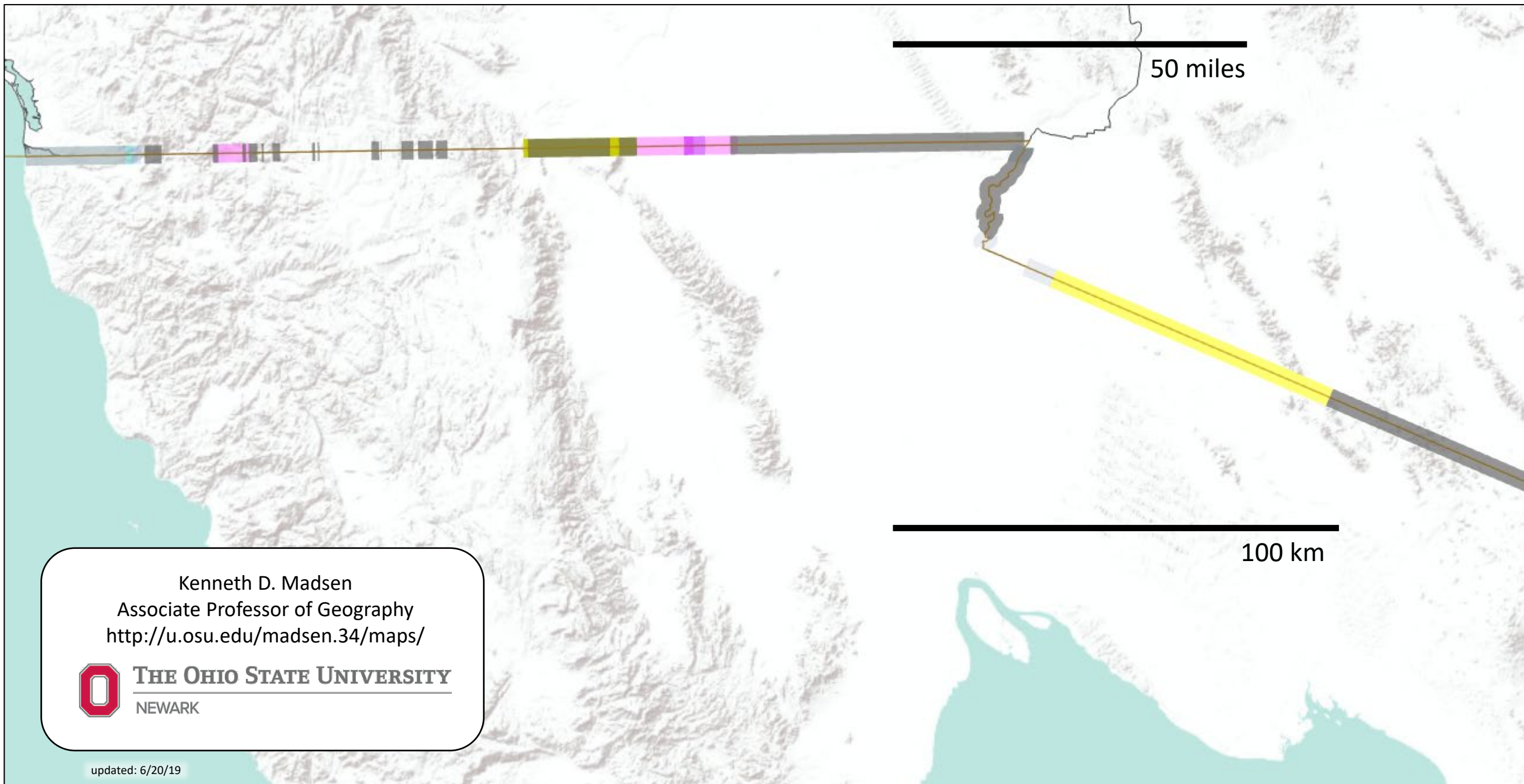


DHS Border Barrier Legal Waivers General Reference Map

Waiver segments are described as lines, thickness of portrayal here is for visualization purposes only.



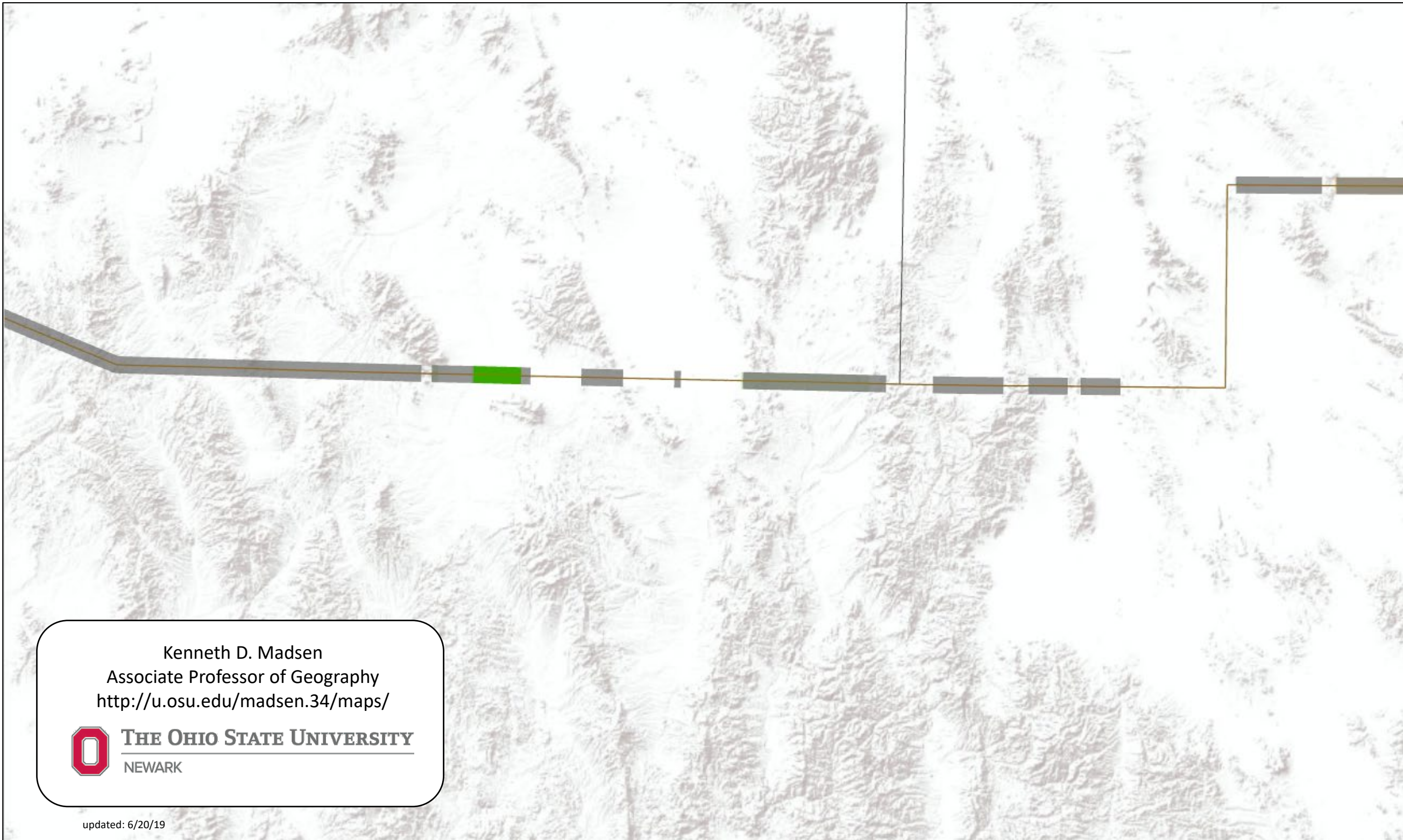


Kenneth D. Madsen
Associate Professor of Geography
<http://u.osu.edu/madsen.34/maps/>



THE OHIO STATE UNIVERSITY
NEWARK

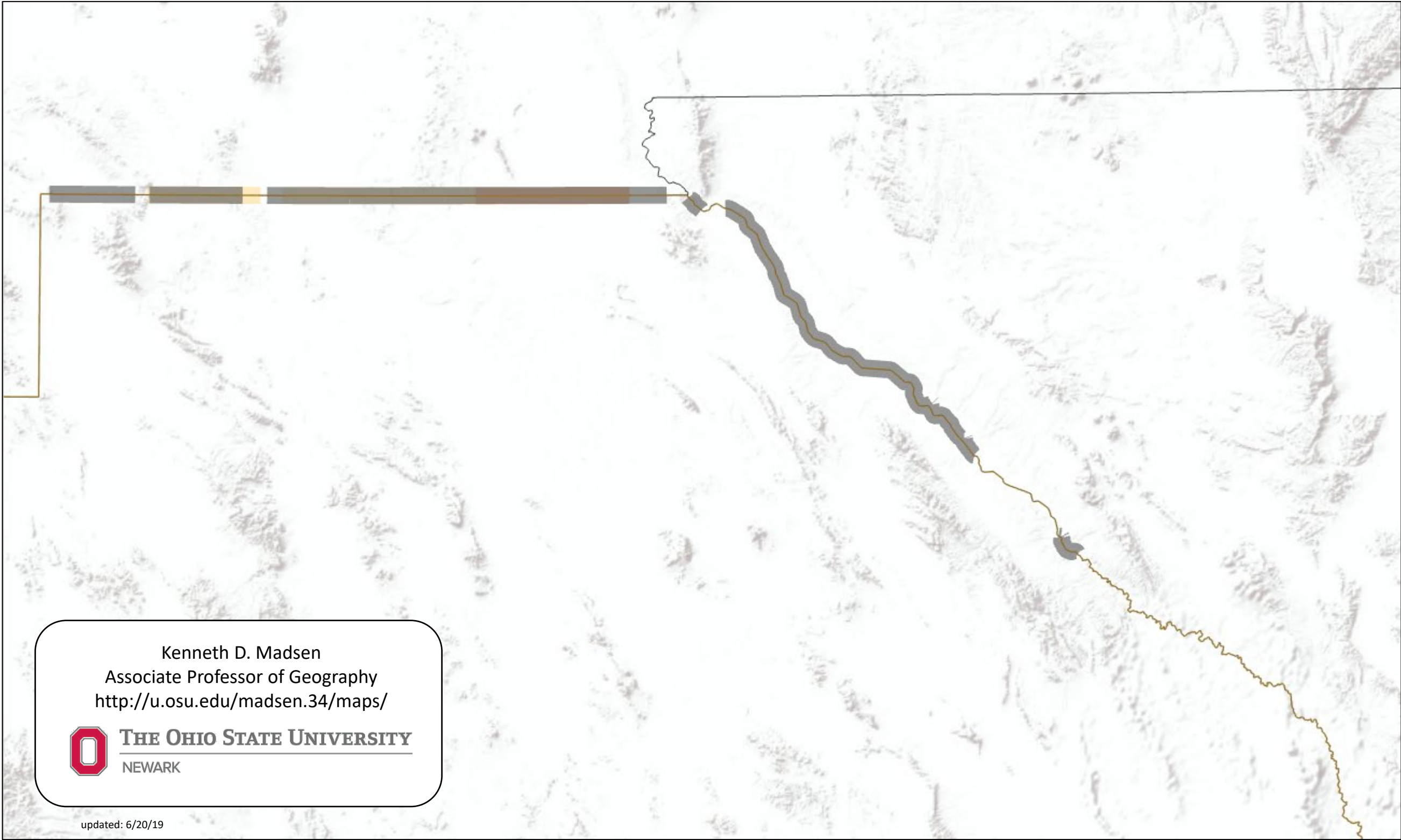
updated: 6/20/19



Kenneth D. Madsen
Associate Professor of Geography
<http://u.osu.edu/madsen.34/maps/>



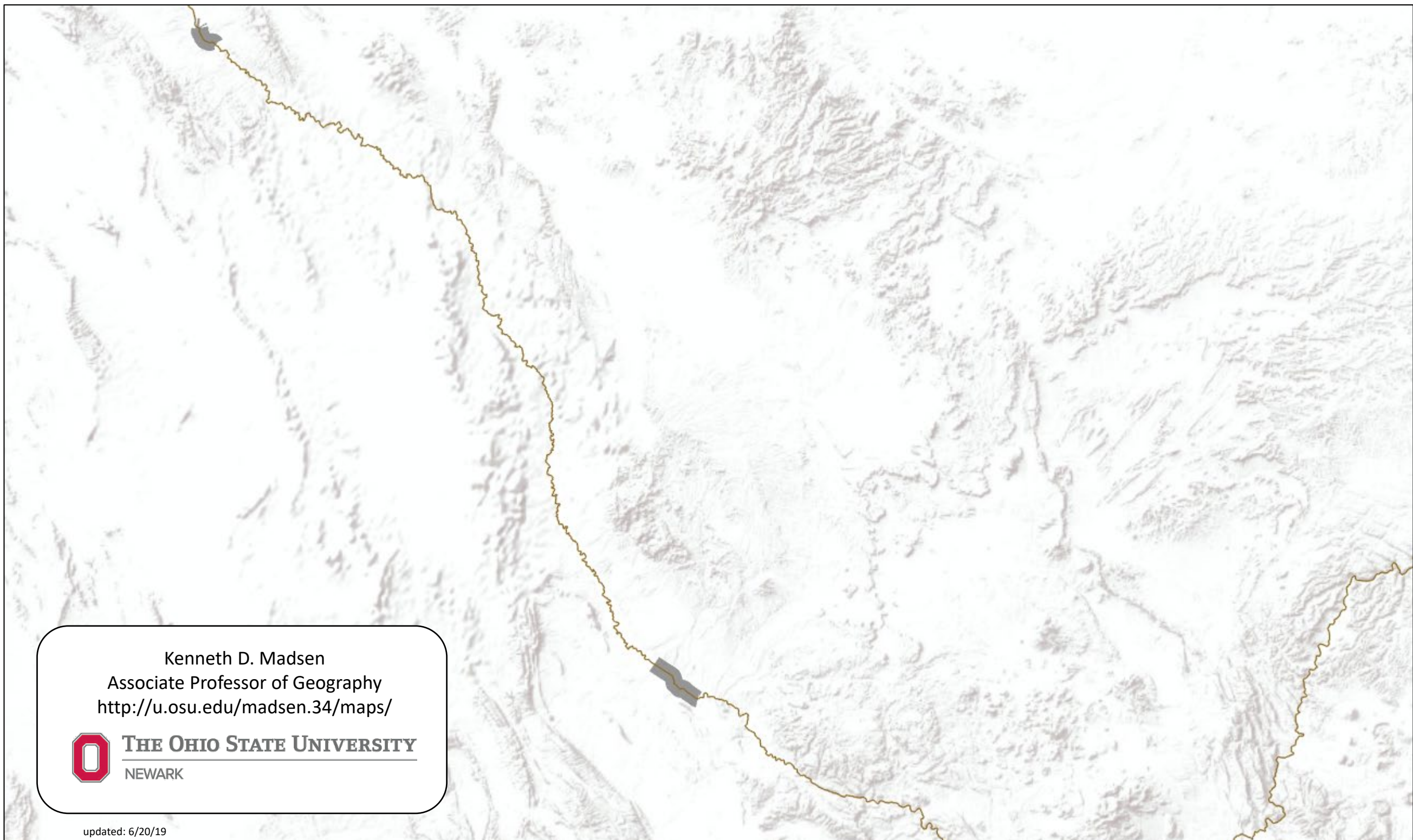
THE OHIO STATE UNIVERSITY
NEWARK



Kenneth D. Madsen
Associate Professor of Geography
<http://u.osu.edu/madsen.34/maps/>



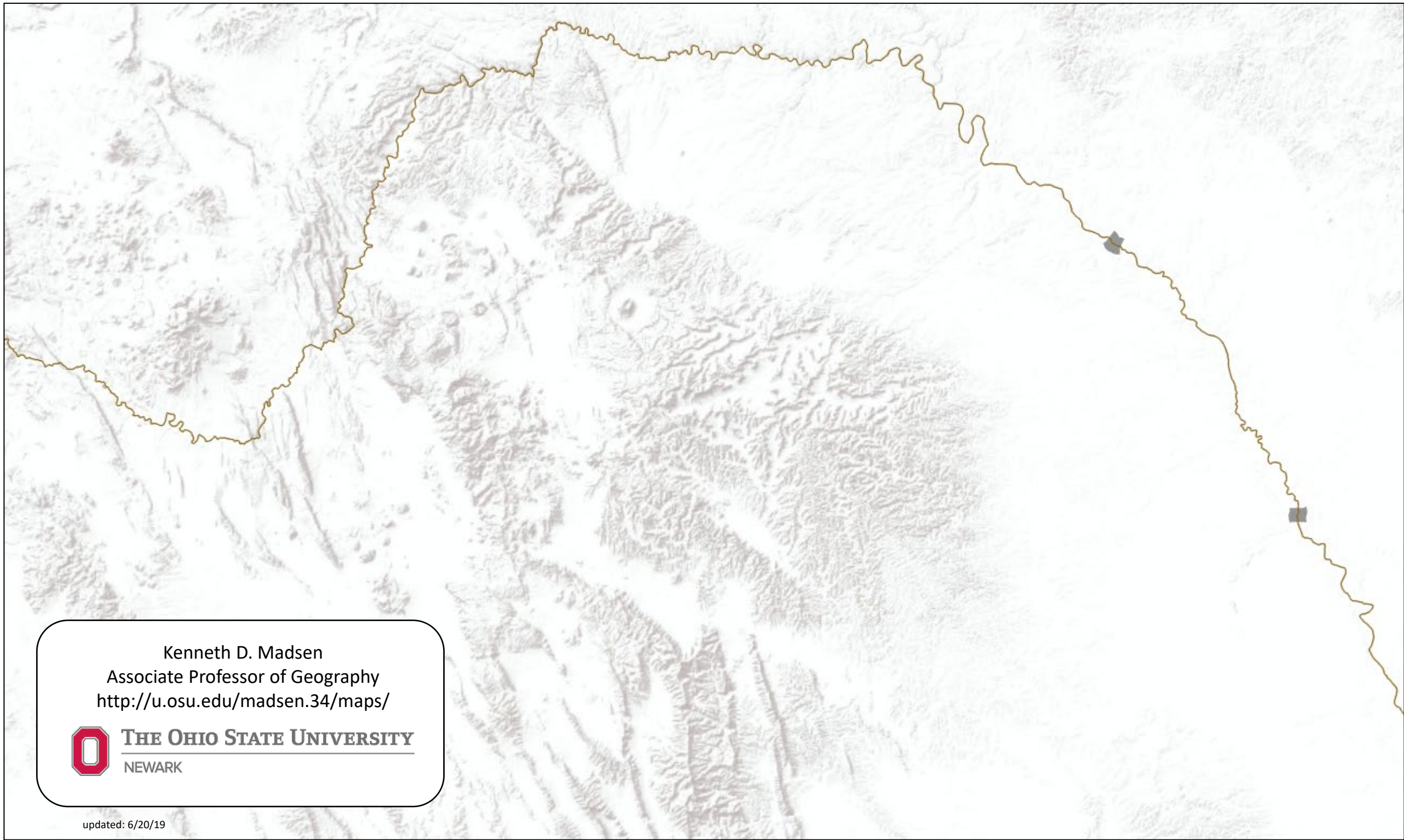
THE OHIO STATE UNIVERSITY
NEWARK



Kenneth D. Madsen
Associate Professor of Geography
<http://u.osu.edu/madsen.34/maps/>



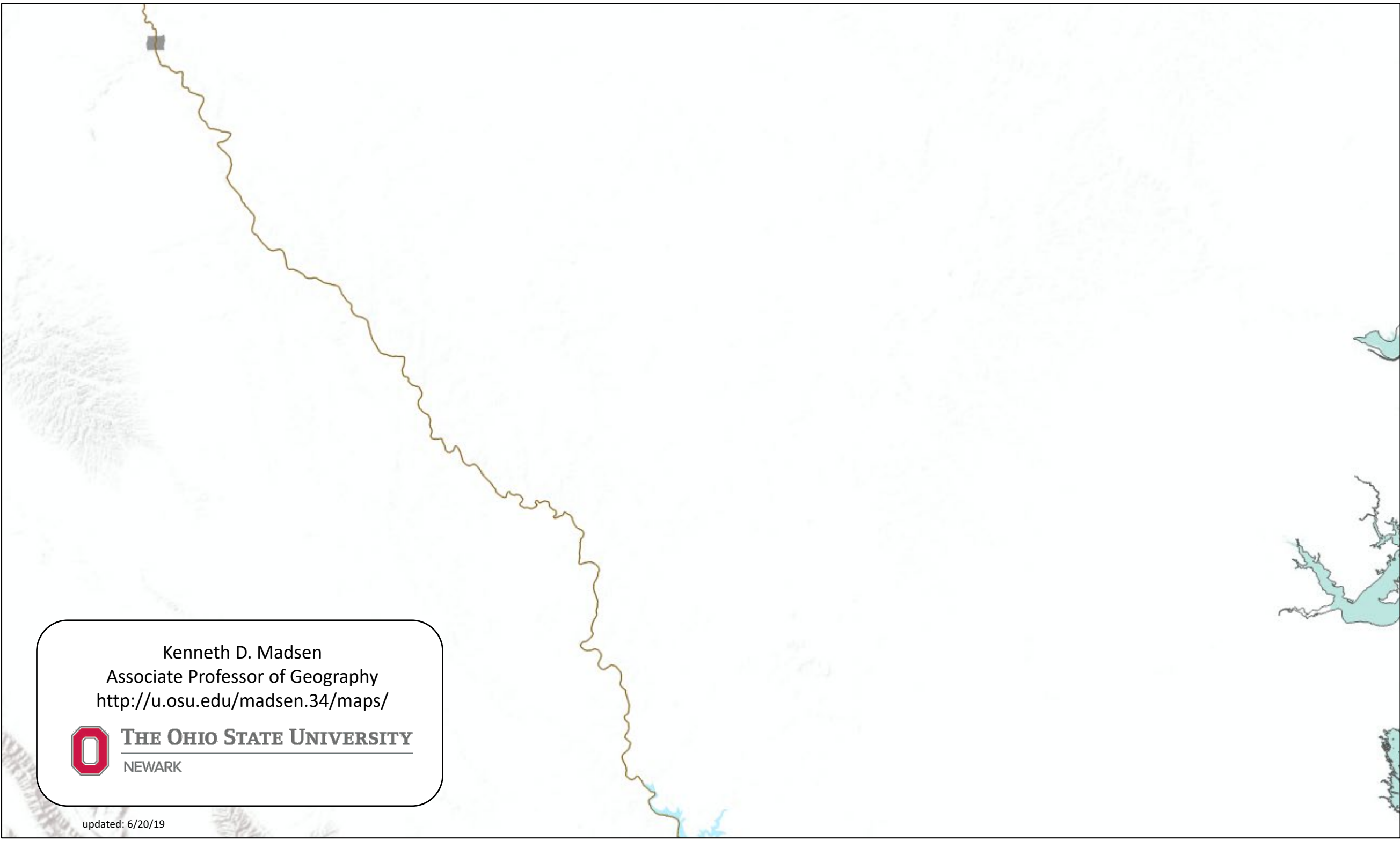
THE OHIO STATE UNIVERSITY
NEWARK



Kenneth D. Madsen
Associate Professor of Geography
<http://u.osu.edu/madsen.34/maps/>



THE OHIO STATE UNIVERSITY
NEWARK



Kenneth D. Madsen

Associate Professor of Geography

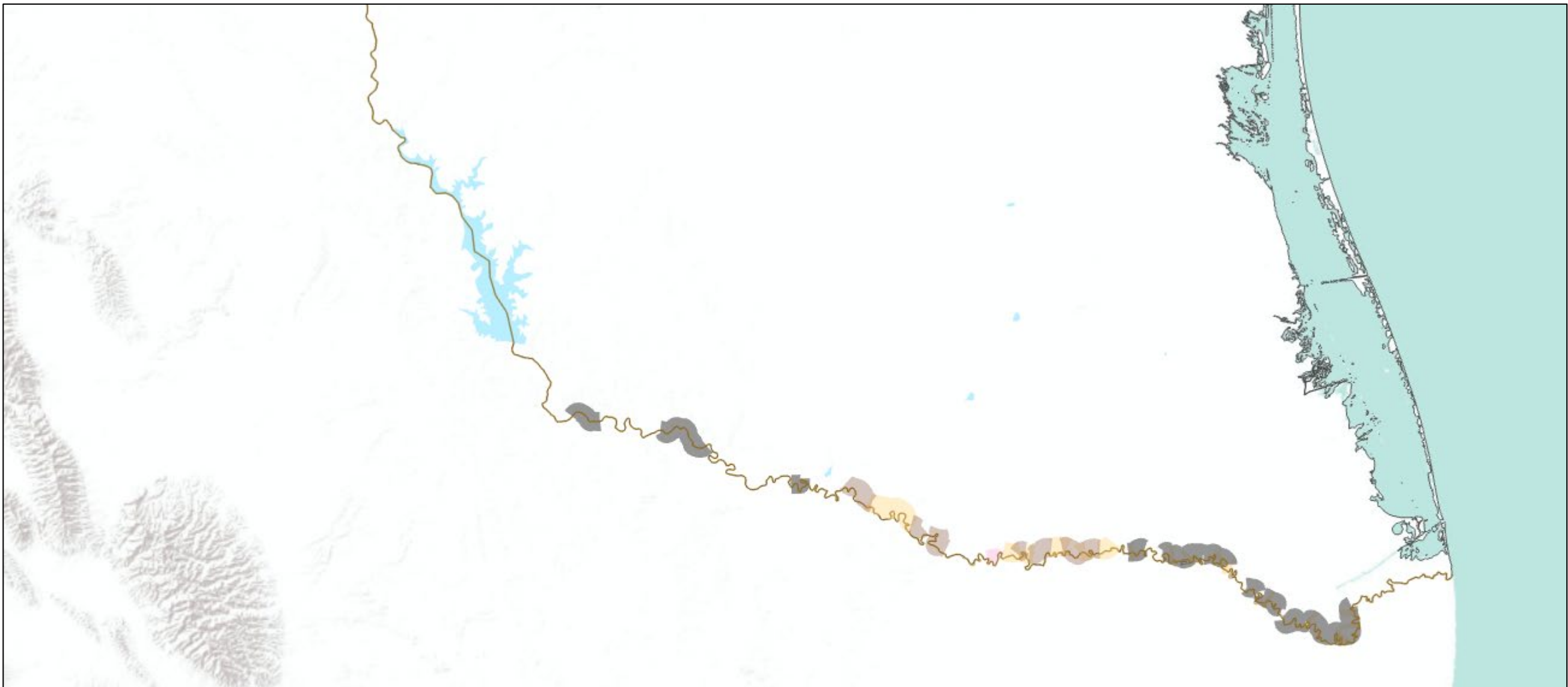
<http://u.osu.edu/madsen.34/maps/>



THE OHIO STATE UNIVERSITY

NEWARK

updated: 6/20/19



Kenneth D. Madsen
Associate Professor of Geography
<http://u.osu.edu/madsen.34/maps/>

 **THE OHIO STATE UNIVERSITY**
NEWARK

Disclaimer: The maps and data here were prepared with great care and a focus on accurate representation. Nonetheless, they are meant for academic research and general reference rather than definitive legal purposes. Factors that impact the final layout and accuracy include (for example): base map, data layers, judgement calls and interpretations when conflicts or unclear data was encountered, rounding, level of source detail, and map projection. Map projection used for these maps was adapted from USA Contiguous Equidistant Conic with a focus on the border region and a central meridian of 107° 08' W.

Data Acknowledgements: ESRI, Google Maps/Earth, MapQuest, International Boundary and Water Commission, U.S. Department of Homeland Security, University of Arizona Spatial Data Explorer, DataBasin, *Federal Register*, Sierra Club Borderlands, Denise L. Gilman, David Taylor, Clare Trainor, Krista Schlyer. My apologies for any inadvertent omissions.