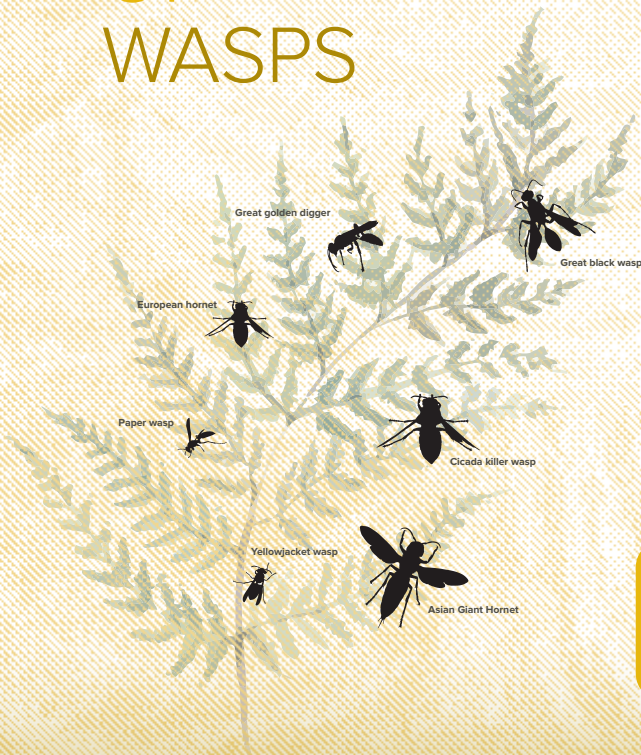


# COMMON WASPS OF OHIO

- **Vespidae Family**
- **Crabronidae Family**
- **Sphecidae Family**
- ==== **Social wasps**
- **Solitary wasps**

## SIZES OF WASPS



**European hornet**  
*Vespa crabro*  
16–25 mm



**Bald-faced hornet**  
*Dolichovespula maculata*  
11–18 mm



**Bald-faced hornet nest**



**Eastern yellowjacket**  
*Vespula maculifrons*  
7–14 mm



**German yellowjacket**  
*Vespula germanica*  
8–18 mm



**Yellowjacket nest entrance**  
(Nests are in the ground or in a wall cavity.)



**Northern paper wasp**  
*Polistes fuscatus*  
13–17 mm



**European paper wasp**  
*Polistes dominula*  
8.5–13 mm



**Paper wasp nest**



**Cicada killer wasp**  
*Sphecius speciosus*  
21–40 mm



**Potter wasp**  
*Eumenes fraternus*  
8–12 mm



**Potter wasp nest**



**Great golden digger**  
*Sphex ichneumoneus*  
19–27 mm



**Pipe organ mud dauber**  
*Trypoxylon politum*  
13–22 mm



**Mud dauber tubes**



**Great black wasp**  
*Sphex pensylvanicus*  
22–38 mm



**Grass carrying wasp**  
*Isodontia spp.*  
16–23 mm



**Grass carrying pupa**  
(Pupa is often found in window sashes or in bee hotel tubes.)



**Asian Giant Hornet**  
*Vespa mandarinia*  
38–50 mm



**Honey bee: Not a wasp**



**Wool carder bee: Not a wasp**

