

Certified Family Life Educator (CFLE)

Patrice Powers-Barker, CFLE,
Lucas County, November 2022

Powers-barker.1@osu.edu



THE OHIO STATE UNIVERSITY

EXTENSION



**“The science and art of
living and working well
in our complex world”**

American Association of
Family and Consumer Sciences

**OUR WORK
CAN BE
COMPLEX**

KEYWORDS AND ACRONYMS

- National Council on Family Relations (NCFR)
- Certified Family Life Educator (CFLE)
- Ohio Council on Family Relations (OHCFR)
- American Association of Family and Consumer Sciences (AAFCS)



DOES BEING A CFLE REALLY HELP ME?

It Depends ...

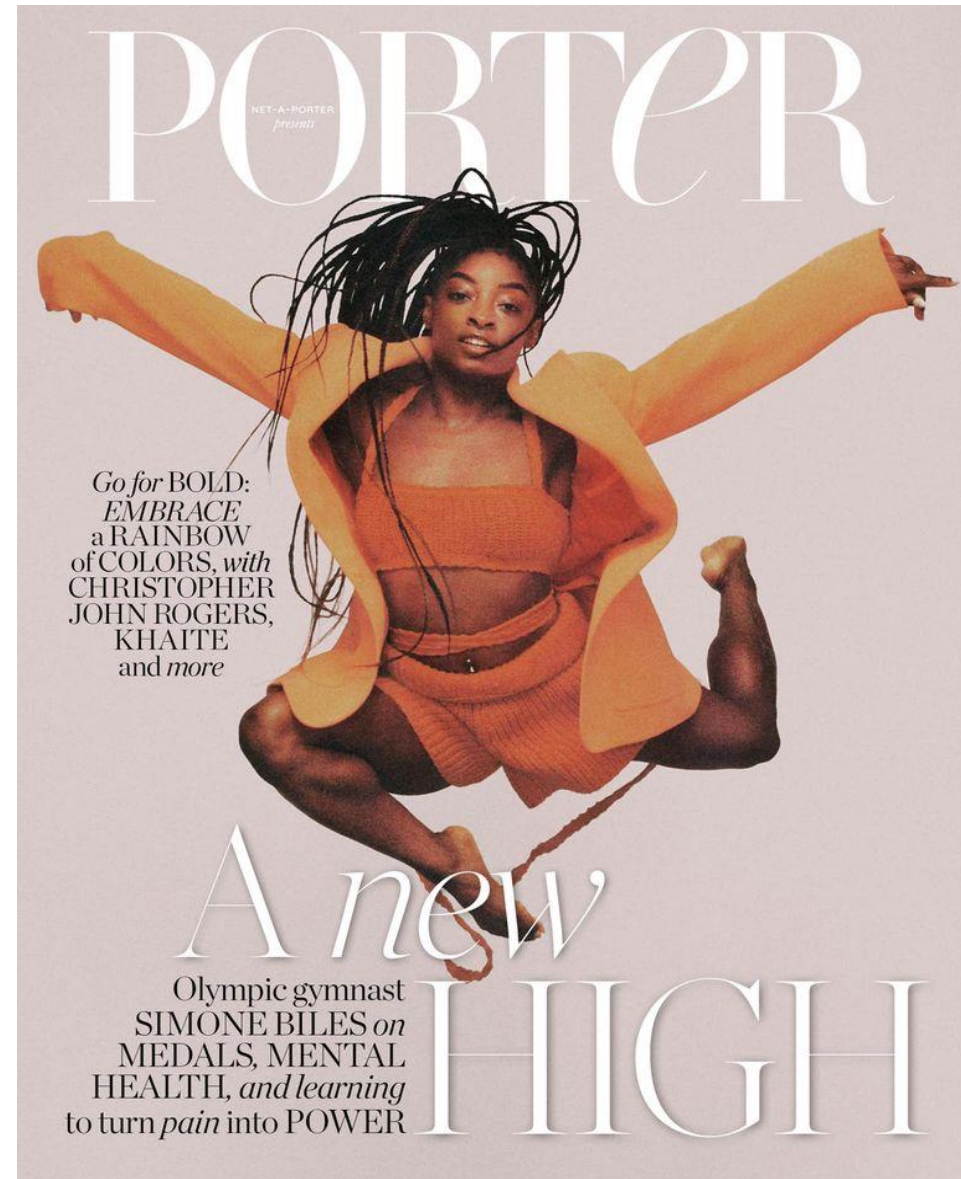
- **No** – no pay increase, people don't know what it is, risk having to be the expert on any and all topics related to families, pulls time, money and attention from other professional organizations like NEAFCS or AAFCS and others
- **Maybe** – interviews, value of credentials, access to professional development, contribute to group work
- **Yes** – challenges me, accountability of professional development, connections with others, new ideas and opportunities, supports my love of life-long learning

NCFR = BRIDGE FROM ACADEMICS TO WORK



CHOOSING A CERTIFICATION

- **OSU Extension Indicator of Professional Development:**
Document recognition of expertise or area(s) of specialization beyond area of responsibility
- **Passion** and purpose
(note: sometimes it's subtle)



ENHANCE YOUR PROFESSIONAL WORK



Free resources
from professional
organizations



National Council
on Family
Relations
membership



CFLE certification

INCREASED COMMITMENT OF TIME, MONEY, EFFORT

FAMILY SCIENCE

The scientific study of families & close interpersonal relationships

Visit family.science



Relationship-Focused



Evidence-Based



Preventive



Strengths-Oriented



Applied

NCFR RESOURCES

WE ARE FAMILY LIFE EDUCATORS

WE ARE COOPERATIVE EXTENSION AGENTS

WE ARE RESEARCHERS

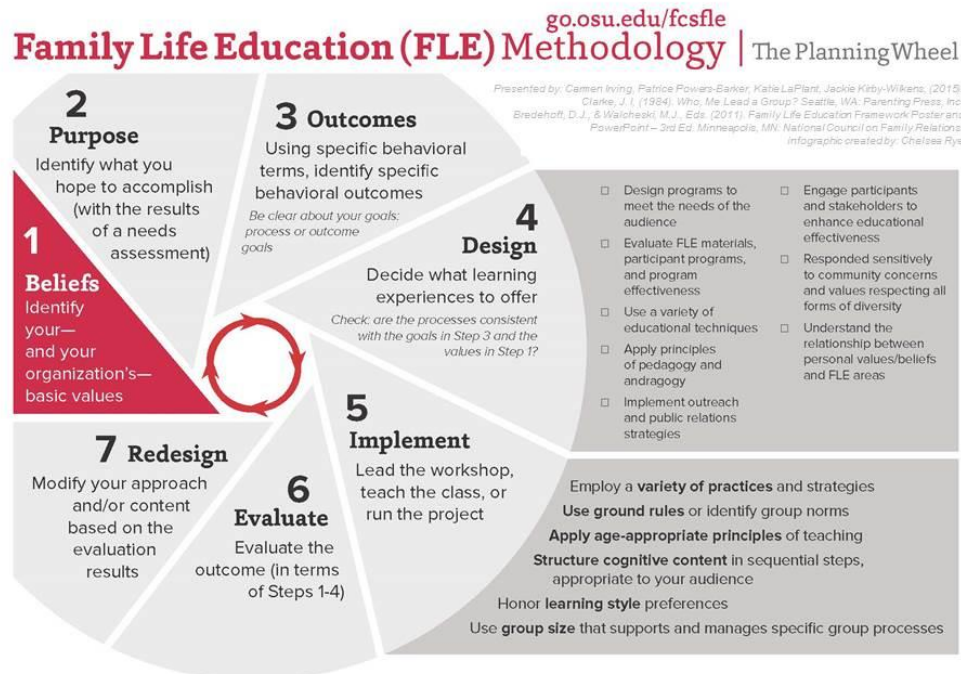
WE ARE DIRECTORS OF AGING SERVICES

WE ARE MEDICAL FAMILY THERAPISTS

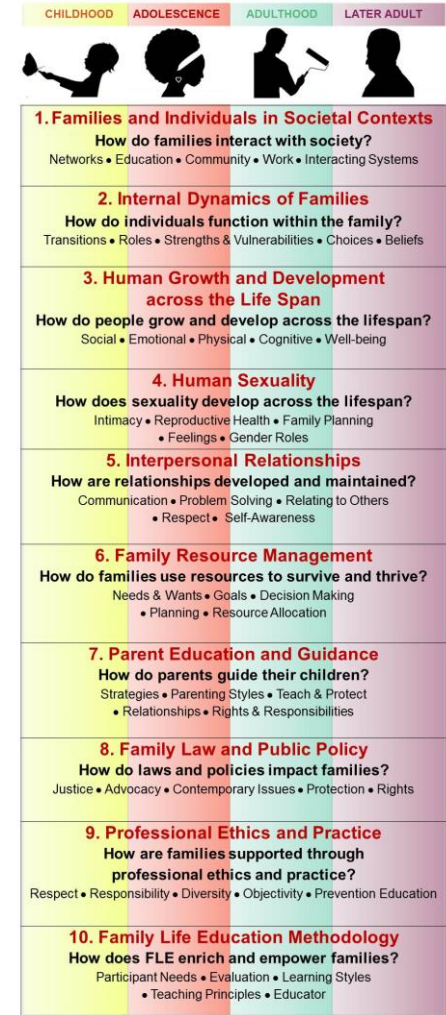
WE ARE FAMILY SCIENCE

ADDITIONAL RESOURCES

- Family Life Education Methodology: The Planning Wheel
- Family Life Education Framework, Across the Lifespan go.osu.edu/fcsfle



Family Life Education (FLE) Framework Across the Lifespan



Sources:
Bredehoff, D.J., & Walchewski, M.J. (2009). Family life education: Integrating theory and practice. Minneapolis, MN: National Council on Family Relations.

Bredehoff, D.J., & Walchewski, M.J., Eds. (2011). Family Life Education Framework Poster and PowerPoint—3rd Ed. Minneapolis, MN: National Council on Family Relations.

Presented by: Patrice Powers-Barker, Carmen Irving, Katie LaPlant, Jackie Kirby-Wilkins (2016)

ADDITIONAL RESOURCES (NOT NCFR)

- **Complex:**
 - Professional organizations
 - Promotion and campaigns
- AAFCS, <https://www.aafcs.org/elevatefcs>
- National Partnership to Recruit, Prepare, and Support FCS Educators, <https://www.fcsed.net/recruit/recruit-marketing>



ENHANCE YOUR PROFESSIONAL WORK



NCFR
membership



CFLE
certification

INCREASED COMMITMENT OF TIME, MONEY, EFFORT

NATIONAL COUNCIL FAMILY RELATIONS (NCFR)

- Member of OHCFR (opportunity to volunteer, offer webinars)
- National webinars, Journal(s)
- Excellent annual, academic conference
- NCFR provides CFLE credential



November 2016

Title: *“Making The Family Life Education Framework Approachable: The Planning Wheel”*

ENHANCE YOUR PROFESSIONAL WORK



Certified Family Life Educator (CFLE)

INCREASED COMMITMENT OF TIME, MONEY, EFFORT

BECOMING A CERTIFIED FAMILY LIFE EDUCATOR

- Demonstrate content knowledge in 10 areas:
 - Families and individuals in societal contexts
 - Internal dynamic of families
 - Human growth and development across the lifespan
 - Human sexuality
 - Interpersonal relationships
 - Family resource management
 - Parent education and guidance
 - Family law and public policy
 - Professional ethics and practice
 - Family life education methodology
- NCFR information: <https://www.ncfr.org/cfle-certification/become-certified>
- Talk to your colleagues (Patrice and Katie Schlagheck, on OHCFR and other CFLE colleagues)

ALL PROFESSIONALS - YOU ARE INVITED:

- Name your professional passion
- Read three articles:
 - [Reconceptualizing the Domain and Boundaries of Family Life Education](#) (2011)
 - [Family Life Education: A Profession with a Proven Return on Investment \(ROI\)](#) (2014)
 - [The Family and Consumer Sciences Body of Knowledge and the Cultural Kaleidoscope: Research Opportunities and Challenges.](#) (2009)
- Use free tools from NCFR (as well as from other professional organizations)
- Read more about CFLE: go.osu.edu/FLELens

