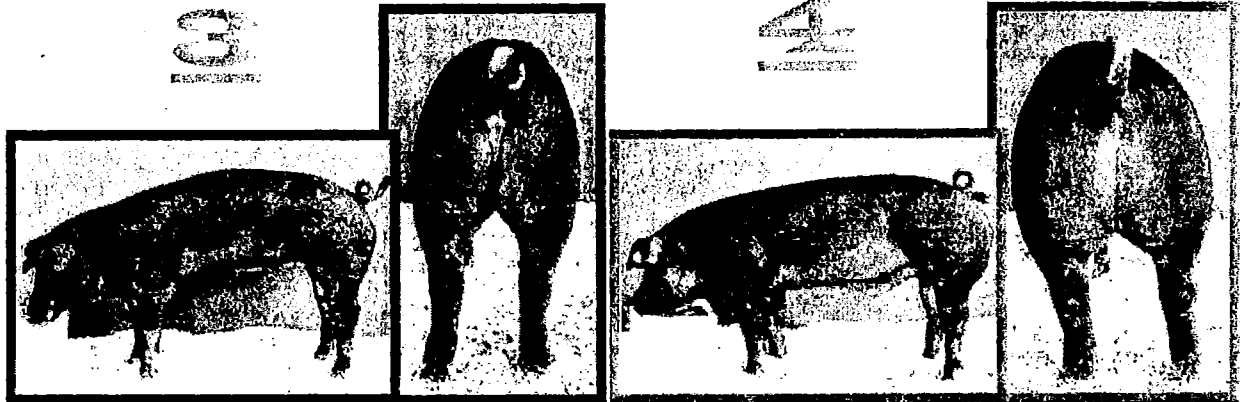
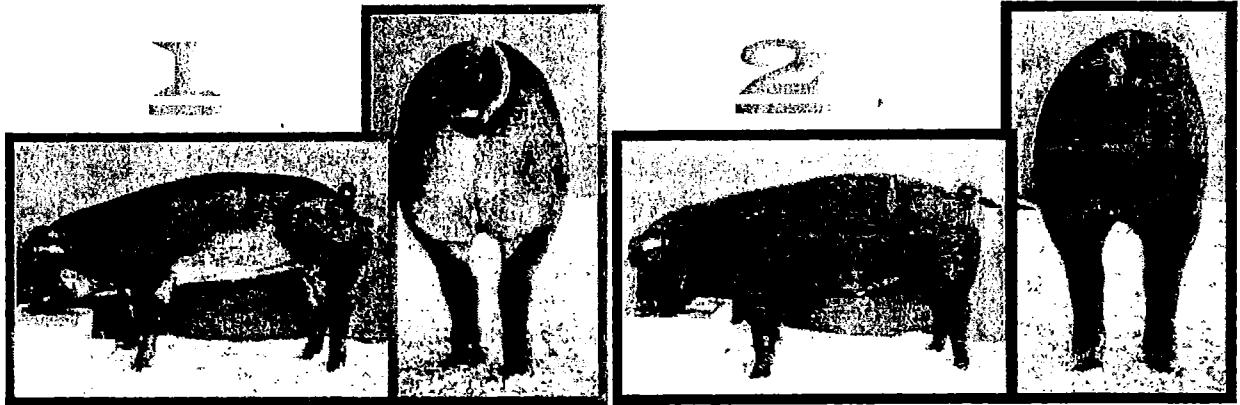


Duroc Market Hogs



Example Completed Note Page – Duroc Market Hogs

1. Gilt, light colored
2. Barrow, darkest colored, tight sheath
3. Gilt
4. Barrow, heavy sheath

4/1	<i>Powerfully constructed</i>	<i>Leaner</i> - <i>lower skeleton</i> - <i>loin edge</i>
	<i>Stouter</i> - <i>base width</i> - <i>chest</i> - <i>center body</i> <i>Design</i> - <i>leveler topped</i> - <i>tail set</i>	<i>Tight spine</i> <i>Flat ribbed / high flank</i> <i>Narrow based</i>
1/2	<i>Carcass Merit / Lean Gain</i>	<i>Sounder moving</i> <i>Deeper centered</i>
	<i>Faster growing / Bigger skeletoned</i> <i>Muscle</i> - <i>bigger topped</i> - <i>dimension to ham</i> <i>Leanness</i> - <i>loin edge</i> - <i>lower one third</i>	<i>Fattest</i> <i>Light muscled</i> <i>Smallest Skeletoned</i>
2/3	<i>Soundness / Productive Design</i>	<i>Leaner</i> <i>Longer bodied</i>
	<i>Longer striding</i> - <i>cushion to knee</i> - <i>flex to hock</i> <i>Productive appearing</i> - <i>heavier boned</i> - <i>deeper ribbed</i>	<i>Narrowest made</i> <i>Frailest boned</i> <i>Poorest structured</i> <i>Shallowest bodied</i>

Example Set of Reasons – Duroc Market Hogs

I placed the Duroc market hogs 4-1-2-3. I found a top pair of apparently faster growing, more product oriented hogs, where I preferred 4 as he is more powerfully constructed. To be more specific, he is the stoutest made barrow who excels in base width, is the widest chested, and has the boldest shape to his rib. Additionally, he is a more correctly designed barrow that is leveler topped and especially more elevated in his tail set. Yes, the light colored gilt reads leaner through her lower skeleton and over her loin. However, she is tight in her spine, flat ribbed, and narrow based, so I placed her second.

Nevertheless, in an easier middle pair, I preferred her over 2 due to her distinct advantages in carcass merit and apparent lean gain. The bigger skeletoned gilt is clearly heavier muscled due to the fact that she is bigger topped and reads with more dimension to her ham. Plus, she is cleaner over the edge of her loin and is freer of fat through her lower one third. I admit, the tight sheathed barrow is sounder moving and deeper centered. Unfortunately, he is the wastiest made and smallest skeletoned, and one of two light muscled hogs, so I left him third.

Still, in a contrasting bottom pair, I used his soundness and more productive design to place him over 3. First of all, he is a longer striding barrow that particularly has more cushion to his knee and flex to his hock. Secondly, the more productive appearing barrow is heavier boned and deeper ribbed. Now, I certainly appreciate the fact that 3 has a clear advantage in leanness and length of body. Despite this, I like her fourth as she's the narrowest made, frailest boned, and shallowest bodied hog that is clearly the poorest structured.

Thank you.