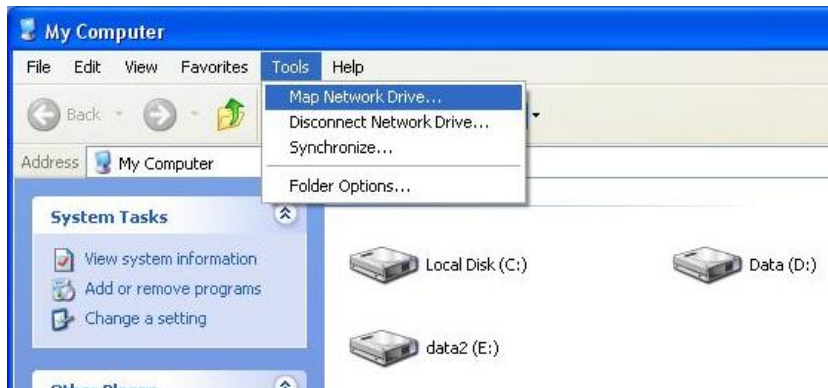


# Mapping to the Microscopy Server

## Windows Version – Updated 09/03/2013

- 1) Server authentication uses CNET IDs and passwords. This will be the same username and password you use to log in to the microscope. Note that TWO SERVERS ARE AVAILABLE: one in KCBD and the one in the Hospital complex.
- 2) Click the “My Computer” icon. Choose “Tools” --> “Map Network Drive”



- 3) A new window will appear. Keep whatever drive letter appears in the “Drive” box and type [\\128.135.161.24\data](#) in the “Folder” box for the **hospital** server, or [\\128.135.194.31\data](#) for the **KCBD** server. Click “Finish.” The server names, srf-abbottdata or srf-microdata1, might work, but UCHAD security policies are likely to result in ‘server not found’ error messages if you use names vs IP numbers.



- 4) Enter the same CNET username and password you use to log into the microscope when asked to authenticate, then find your folder in the list and start downloading your data!

NOTE: logging onto microscopes using PCs automatically maps you to your specific folder on either server. Mapping from your own machine shows ALL user folders, so you will need to locate your folder from the long listings. Abbott speedy save is to drive R: (128.135.161.24) and KCBD is to K: (128.135.194.31). The drive letter you chose/get when you map your own machine may be different than R or K, and that doesn't make any difference. Since you have a choice, you will have to remember onto WHICH server you placed your data.