



ANDROSCOGGIN COUNTY

Justice Data

USM Muskie School of Public Service
Maine Statistical Analysis Center



Androscoggin County Facts:

- *Incorporated in 1854, Androscoggin is a county in southern Maine that hosts two of Maine's largest cities, Lewiston and Auburn, also known as the "Twin Cities". The county is centrally located and is approximately one-half hour from both Portland, Maine's largest city, and Augusta, Maine's capital.*
- *In 2007, Androscoggin County's population was estimated at 106,837.*
- *8% of Maine's total population resides in Androscoggin County.*
- *In 2007, the juvenile population was estimated at 24,371¹.*

POPULATION BY GENDER AND AGE, 2007			
Gender/Age Group	Number	Percent of Total	
		Androscoggin	Maine
Total	106,837	100.0%	100.0%
Male	51,946	48.6%	48.8%
Female	54,891	51.4%	51.2%
Under 14	20,082	18.8%	17.3%
15 to 24	13,973	13.1%	12.9%
25 to 34	13,385	12.5%	11.3%
35 to 44	15,956	14.9%	14.7%
45 to 54	16,116	15.1%	16.5%
55 to 64	12,165	11.4%	12.6%
65 to 74	7,394	6.9%	7.5%
75 to 84	5,858	5.5%	5.3%
85+	1,908	1.8%	1.9%
Median Age	-	39	41

¹ OJDDP Statistical Briefing Book

² Maine Department of Labor, 2007

Demographic Facts³

- Population growth in Androscoggin County (3.0% increase from 2000 to 2008) has been close to the statewide growth rate of 3.3%.
- The population is younger than the statewide average.
 - Persons under 18 account for 22.8% of Androscoggin County's population compared with the statewide average of 21.2%.
- Educational attainment is lower than the statewide average.
 - 79.8% of those ages 25+ in Androscoggin County have graduated from high school compared with the statewide average of 85.4%.
 - 14.4% of those ages 25+ in Androscoggin County have obtained a bachelor's degree or higher compared with the statewide average of 22.9%.
- Most income measures are lower and poverty is higher than statewide averages.
 - The median household income in Androscoggin County is \$45,254 compared with a statewide average of \$45,832.
 - 14.1% of Androscoggin County residents live below the poverty line compared with a statewide average of 12.2%.
- Population density: 227 people per square mile (Statewide: 41.3 people per square mile)
- Largest cities (population): Lewiston (35,234), Auburn (23,203), Lisbon (9,328)

Lewiston-Auburn Justice System Information

- As of printing, the Lewiston Police Department is the only police force in Maine certified by the National Commission on Accreditation for Law Enforcement Agencies.⁴
- Lewiston-Auburn's crime rate is lower than the other major metropolitan areas in Maine, including Bangor, Augusta, and Portland.⁵
- Lewiston-Auburn was rated as the 60th safest metropolitan area in the country according to CQ Press.⁶

³ Ibid.

⁴ City of Lewiston-Auburn Website <<http://laitshappeninghere.com/newsite/?p=237>>

⁵ Ibid.

⁶ *Bangor Daily News*, 11/24/08

Adult Criminal Justice Highlights:

ARRESTS HAVE INCREASED AMONG ADULTS, BUT INDEX CRIMES, THE EIGHT CRIMES (HOMICIDE, ROBBERY, FORCIBLE RAPE, AGGRAVATED ASSAULT, BURGLARY, LARCENY/THEFT, MOTOR VEHICLE THEFT, AND ARSON) THE FBI COMBINES TO PRODUCE ITS ANNUAL CRIME INDEX, HAVE DECREASED OVER THE LAST 10 YEARS.

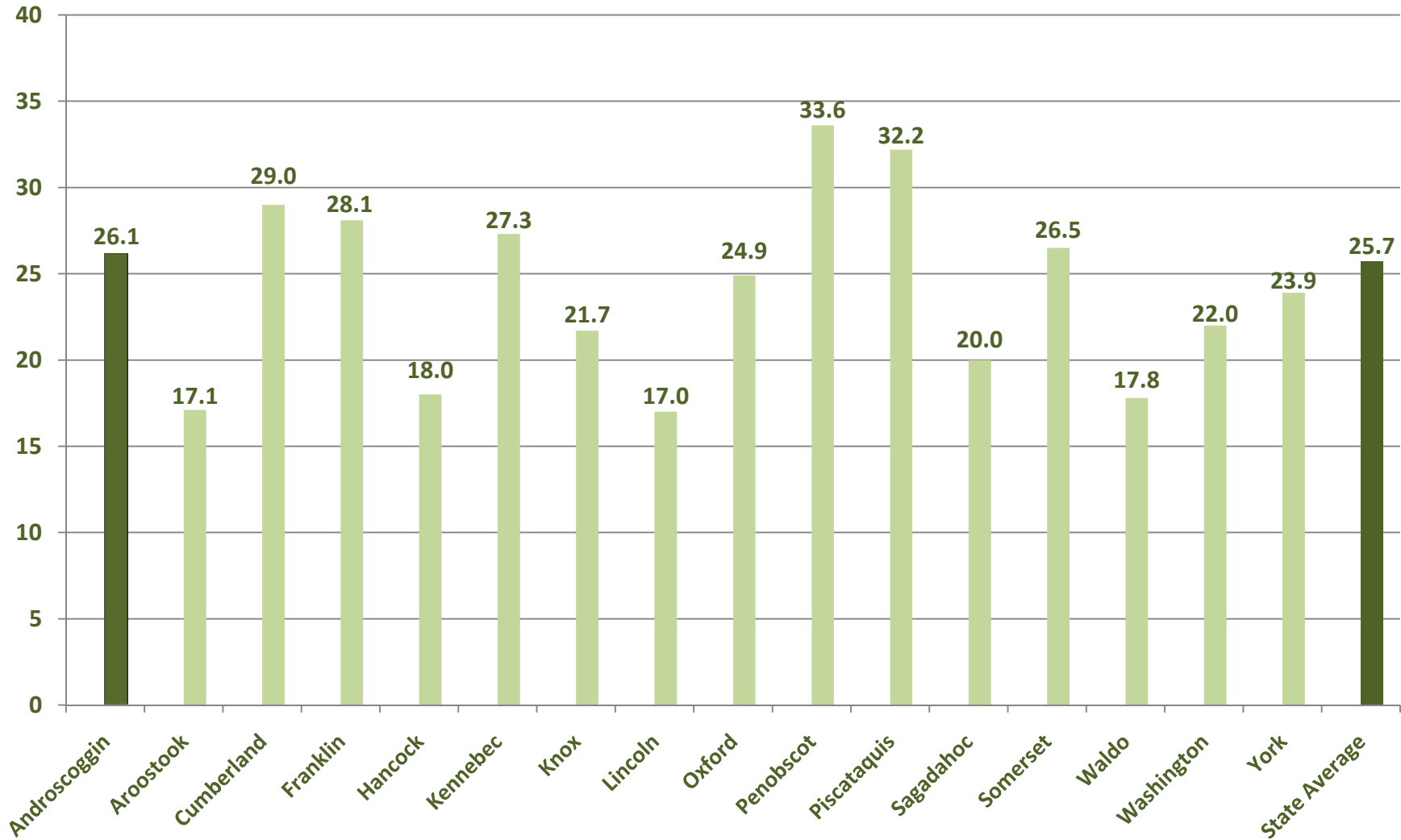
- Adult arrests increased by 15.2% over the last 5 years and increased 13.7% over the last 10 years.
- Index crimes decreased by 10.1% over the last 5 years and decreased 32.4% over the last 10 years. Nonetheless, violent crime increased 25% over the past 5 years, returning to their 1998 levels. However, property crimes, which make up the large percentage of index crimes, decreased by 11.2% over the last 5 years and 33.6% over the last 10 years.
- In 2007, there were 26.1 index crimes per 1,000 residents, comparable to the statewide rate of 25.7 index crimes per 1,000 residents.

Juvenile Justice Highlights

JUVENILE ARRESTS HAVE DECLINED OVER THE PAST 10 YEARS, BUT RECIDIVISM RATES REMAIN HIGH.

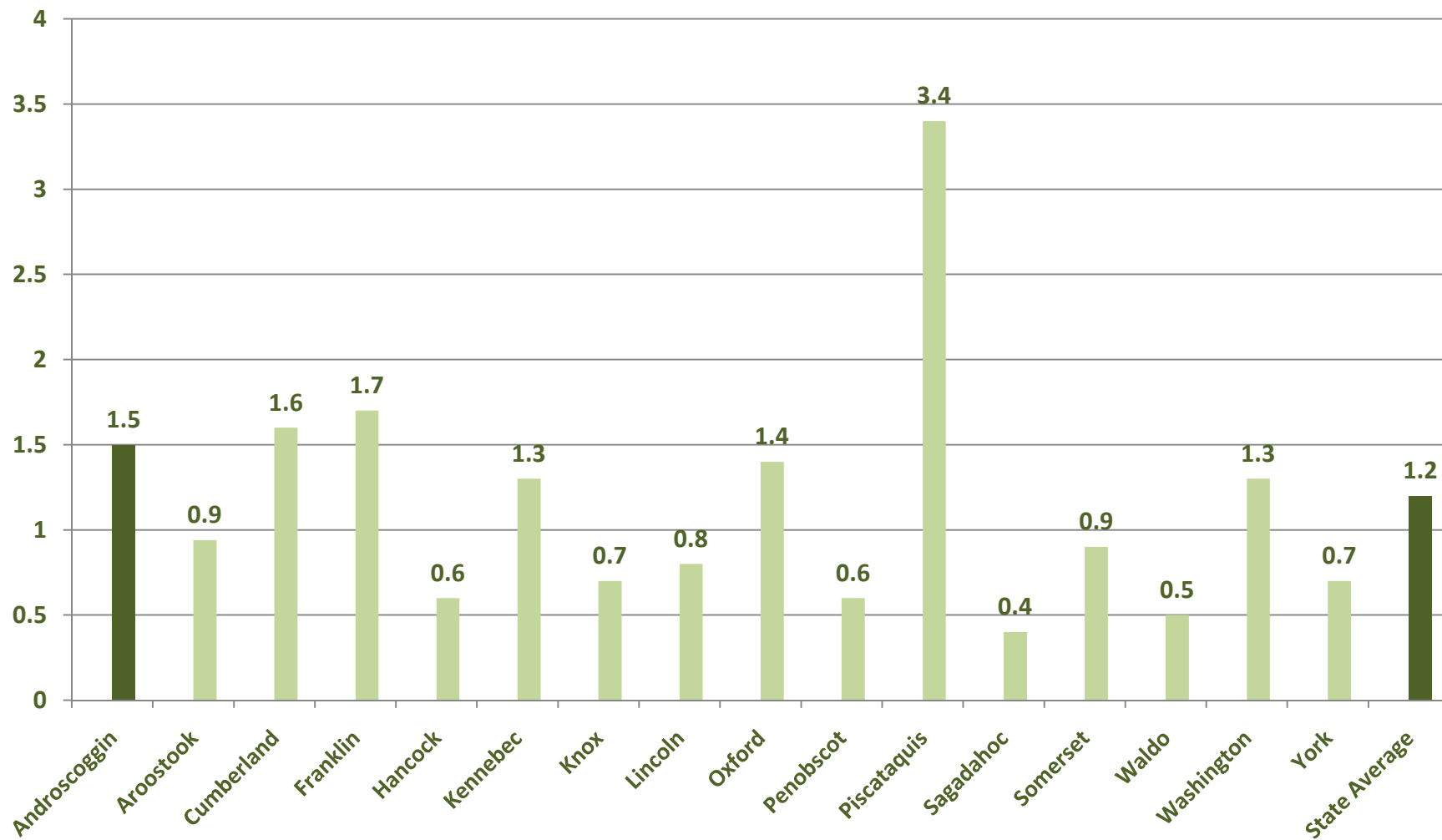
- Juvenile arrests have decreased 28.6% over the past 5 years and decreased 56.3% over the past 10 years.
- The juvenile recidivism rate for the 2005 cohort was 35%. This was the second highest rate in 2005 in Maine (after Somerset County).
- Androscoggin County had the second highest rate (after Sagadahoc County) of juveniles adjudicated for the first time in 2005 at 13.5 per 1,000 population.

Index Crimes per 1,000 Residents, County Comparisons, 2007 (Total Population)

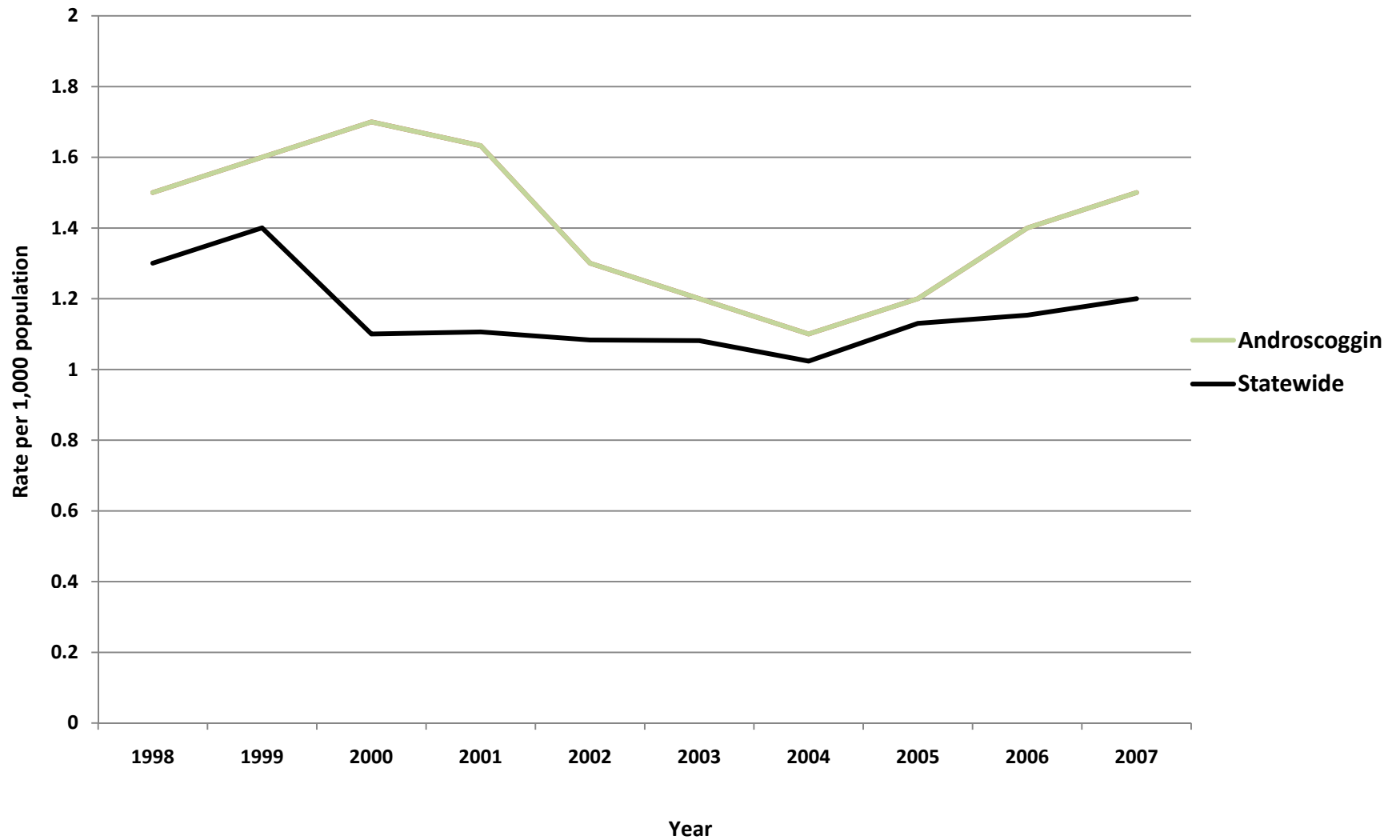


Violent Crimes per 1,000 Residents, County Comparisons, 2007

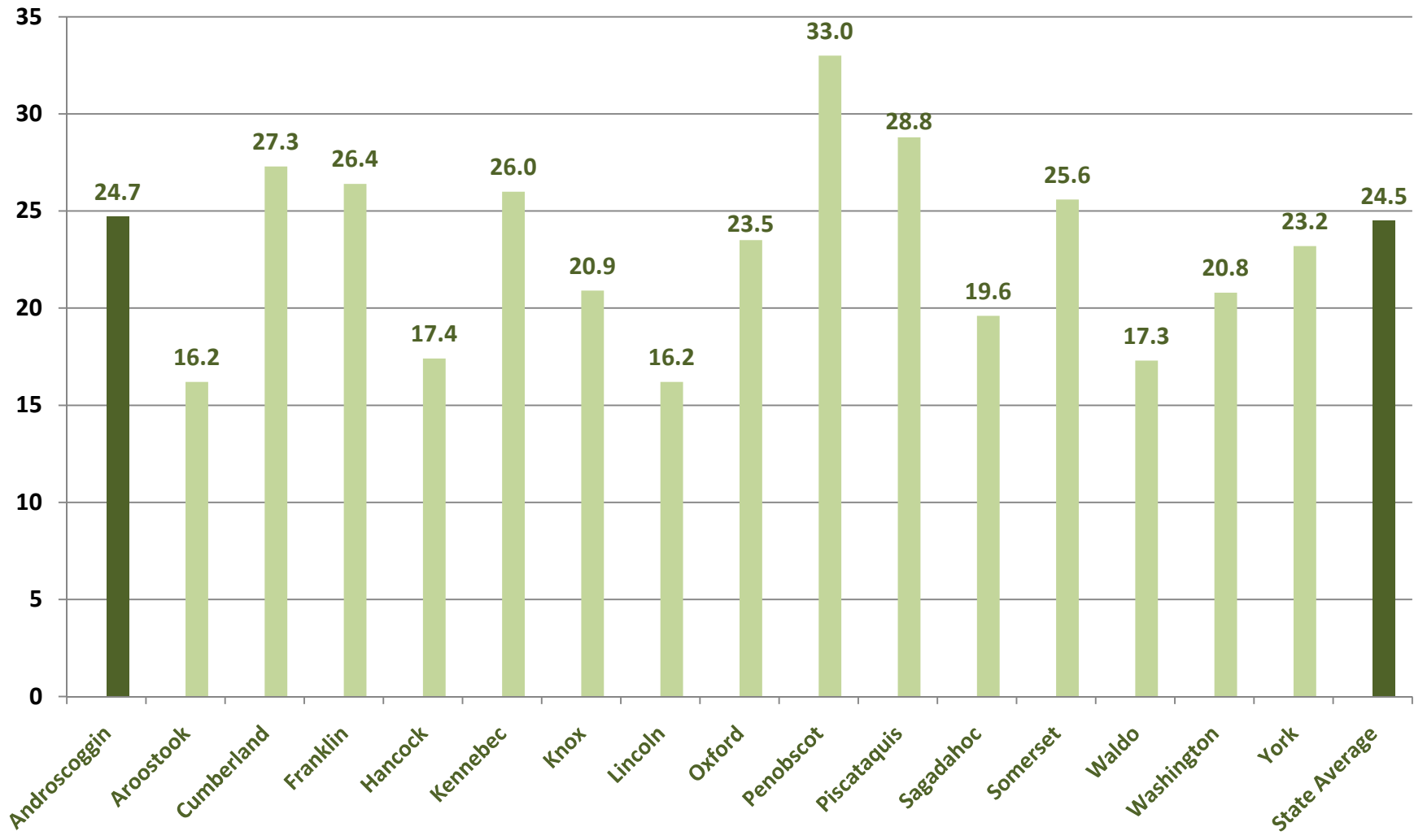
(Total Population)



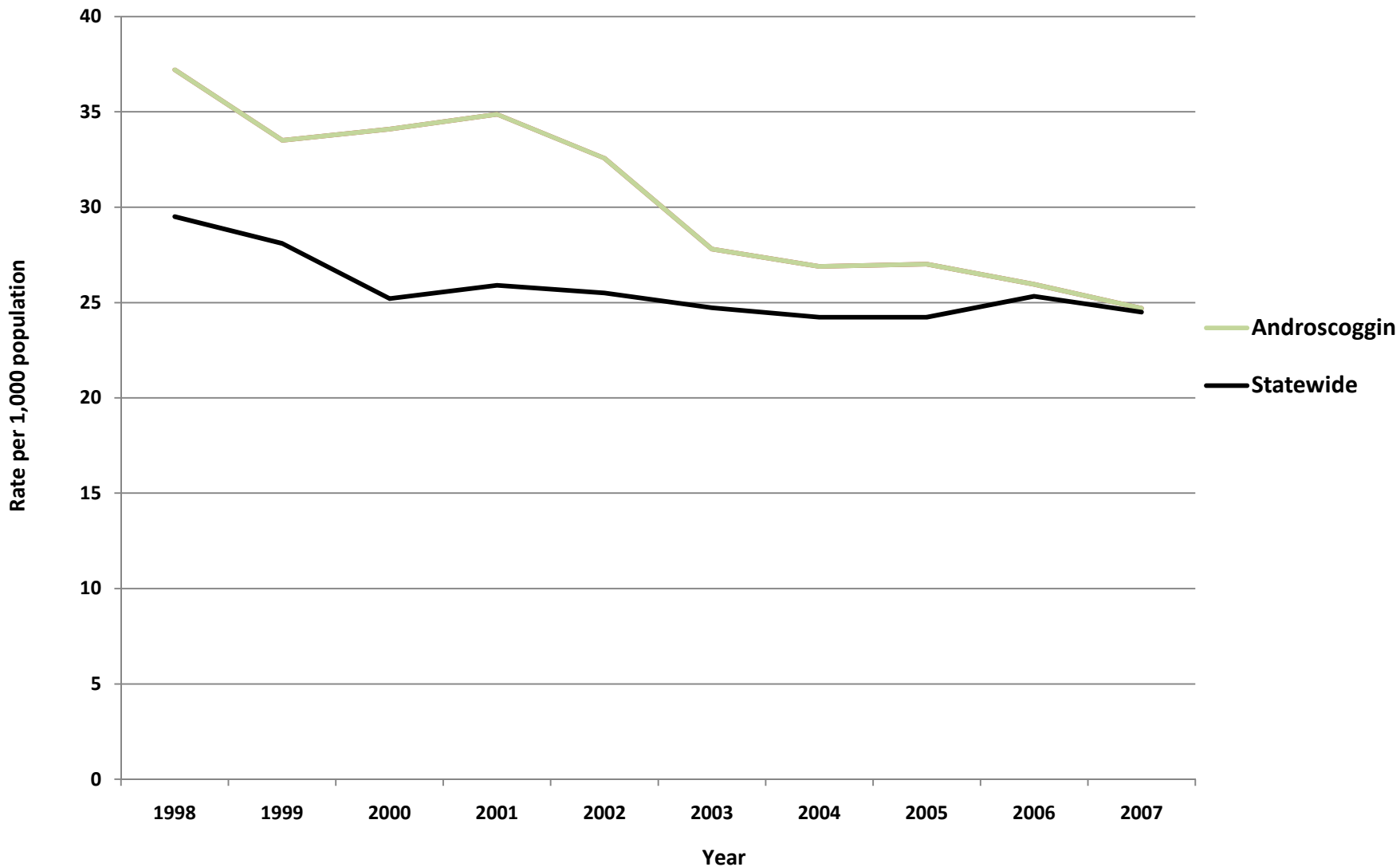
Androscoggin- Violent Crimes per 1,000 Residents (Total Population)



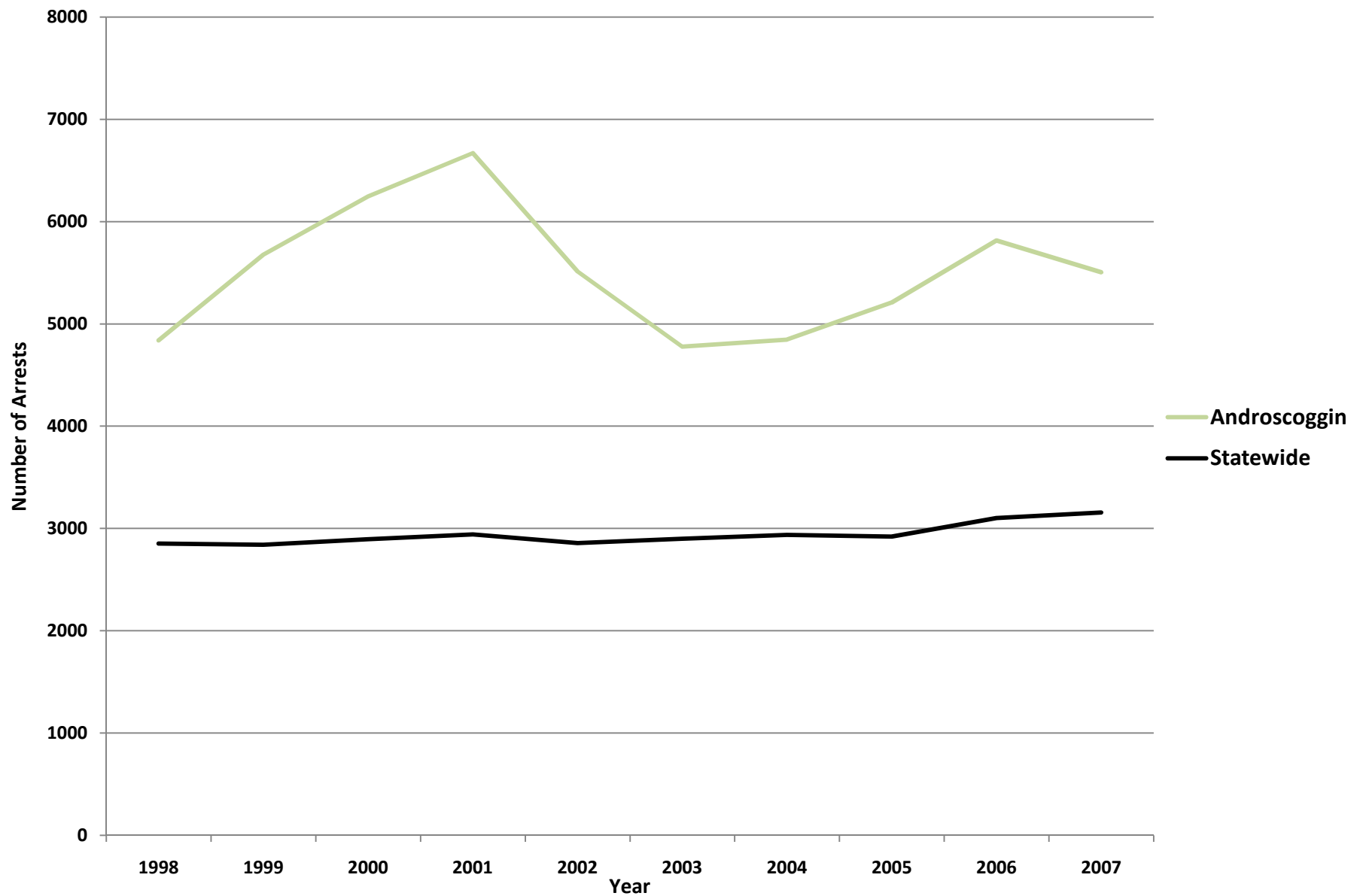
Property Crimes per 1,000 Residents, County Comparisons, 2007 (Total Population)



Androscoggin- Property Crimes per 1,000 Residents (Total Population)



Androscoggin - Adult Arrests vs. Statewide Average



Androscoggin - Adult Crime Statistics (2007)			
	Overall	Male	Female
Adult Arrests 2007	5,506	4,150	1,356
5-Year % Change	15.2%	12.8%	23.2%
10-Year % Change	13.7%	9.4%	29.4%
Crime Rates (2007)			
Index Crimes 2007 (per 1,000 pop.)	26.1	Crime Rates are calculated using both Adult & Juvenile Arrests	
5-Year % Change	-10.1%		
10-Year % Change	-32.4%		
Violent crimes 2007 (per 1,000 pop.)	1.5		
5-Year % Change	25.0%		
10-Year % Change	0.0%		
Property crimes 2007 (per 1,000 pop.)	24.7		
5-Year % Change	-11.2%		
10-Year % Change	-33.6%		
Adult Arrests by Type (2007)			
	Adult - Overall	Adult - Male	Adult - Female
Murder & Non-negligent Manslaughter	4	4	0
Manslaughter by Negligence	0	0	0
Forcible Rape	6	6	0
Robbery	10	9	1
Aggravated Assault	100	80	20
Burglary, Breaking & Entering	116	101	15
Larceny-Theft (except Auto Theft)	366	214	152
Motor Vehicle Theft	12	11	1
Other Assaults	734	543	191
Arson	2	1	1
Forgery & Counterfeiting	19	9	10
Fraud	75	39	36
Embezzlement	7	3	4
Stolen Property: Buying, Receiving, Possessing	3	3	0
Vandalism	117	93	24
Weapons: Carrying, Possessing, etc.	24	24	0
Prostitution & Commercialized Vice	5	2	3
Sex Offenses	12	12	0
Drug Abuse Violations	436	350	86
Gambling	0	0	0
Offenses Against Family & Children	4	2	2
Driving Under the Influence	624	477	147
Liquor Laws	192	139	53
Drunkenness	0	0	0
Disorderly Conduct	410	315	95
All Other Offenses (Except Traffic)	2,228	1,713	515
Total	5,506	4,150	1,356

Androscoggin - Juvenile Crime Statistics (2007)			
	Overall	Male	Female
Juvenile Arrests 2007	805	560	245
5-year % change Juvenile arrests	-28.6%	-27.4%	-31.4%
10-year % change Juvenile arrests	-56.3%	-58.8%	-49.6%
Juvenile Justice System Outcomes			
	Rate	Number	
Referrals	50.89 per 1,000 population	568	
Diversion s	37.68 per 100 referrals	214	
Adjudications	64.09 per 100 petitions	257	
Juvenile Arrests by Type (2007)			
	Juvenile - Overall	Juvenile - Male	Juvenile - Female
Murder & Non-negligent Manslaughter	0	0	0
Manslaughter by Negligence	0	0	0
Forcible Rape	1	1	0
Robbery	3	3	0
Aggravated Assault	16	15	1
Burglary, Breaking & Entering	56	48	8
Larceny-Theft (except Auto Theft)	192	130	62
Motor Vehicle Theft	6	4	2
Other Assaults	92	53	39
Arson	6	6	0
Forgery & Counterfeiting	0	0	0
Fraud	3	2	1
Embezzlement	1	1	0
Stolen Property: Buying, Receiving, Possessing	1	1	0
Vandalism	69	59	10
Weapons: Carrying, Possessing, etc.	5	5	0
Prostitution & Commercialized Vice	0	0	0
Sex Offenses	6	6	0
Drug Abuse Violations	50	34	16
Gambling	0	0	0
Offenses Against Family & Children	0	0	0
Driving Under the Influence	7	6	1
Liquor Laws	71	43	28
Drunkenness	0	0	0
Disorderly Conduct	27	12	15
All Other Offenses (Except Traffic)	150	104	46
Curfew & Loitering	43	27	16
Runaways	0	0	0
Total	805	506	245

Referral: Number of juveniles referred to the juvenile justice system.

Diversion: Number of juveniles formally diverted by a juvenile community corrections officer (JCCO).

Adjudication: Number of juveniles found guilty by a court of law.

ACKNOWLEDGEMENTS

Author

William Ethridge, Muskie School Public Policy & Management Graduate Student

Research Supervisor

Mark Rubin, Research Associate, Muskie School of Public Service

SAC Staff Contributor (Juvenile Statistics)

Becky Noreus, Research Analyst, Muskie School of Public Service

Editors

Carmen Dorsey, Director, Muskie School of Public Service Justice Policy Program

George Shaler, Research Associate, Muskie School of Public Service

Format and Design

Sheri Moulton, Project Assistant, Muskie School of Public Service

Special thanks to the Maine Statistical Analysis Center Advisory Group

Roxy Hennings, CQI Director, Division of Juvenile Services, Maine Department of Corrections

Denise Lord, Deputy Commissioner, Maine Department of Corrections

Janet Joyeux, Assistant to the Commissioner, Maine Department of Public Safety

Barry Stoodley, Associate Commissioner of Juvenile Services, Maine Department of Corrections

Paul Vestal, Chair, Maine Criminal Justice Commission

Sherry Wilkins, Court Management Analyst, Maine Administrative Office of the Courts

Attribution

The Maine County Profile Justice Data was created under the auspices of the State Justice Statistics Program, Bureau of Justice Statistics (BJS), Department of Justice (DOJ). Funding was provided by BJS Grant 2008-BJ-CX-K034. The opinions, findings, and conclusions expressed in this publication are those of the authors and do not necessarily reflect the view of the Department of Justice.

All data included in the criminal justice highlights and the corresponding charts and tables was derived from the [2008 Maine Crime and Justice Data Book](#) and the [Maine Department of Public Safety](#) and the [Maine Department of Corrections Juvenile Recidivism Report](#).

Updated: 12/09

ABOUT THE UNIVERSITY OF SOUTHERN MAINE (USM)
MUSKIE SCHOOL OF PUBLIC SERVICE

The USM Muskie School of Public Service educates leaders, informs public policy, and strengthens civic life through its graduate degree programs, research institutes and public outreach activities. By making the essential connection between research, practice, and informed public policy, the School is dedicated to improving the lives of people of all ages, in every county in Maine and every state in the nation.

This report is available on the Justice Policy Program Website:
<http://muskie.usm.maine.edu/justiceresearch>