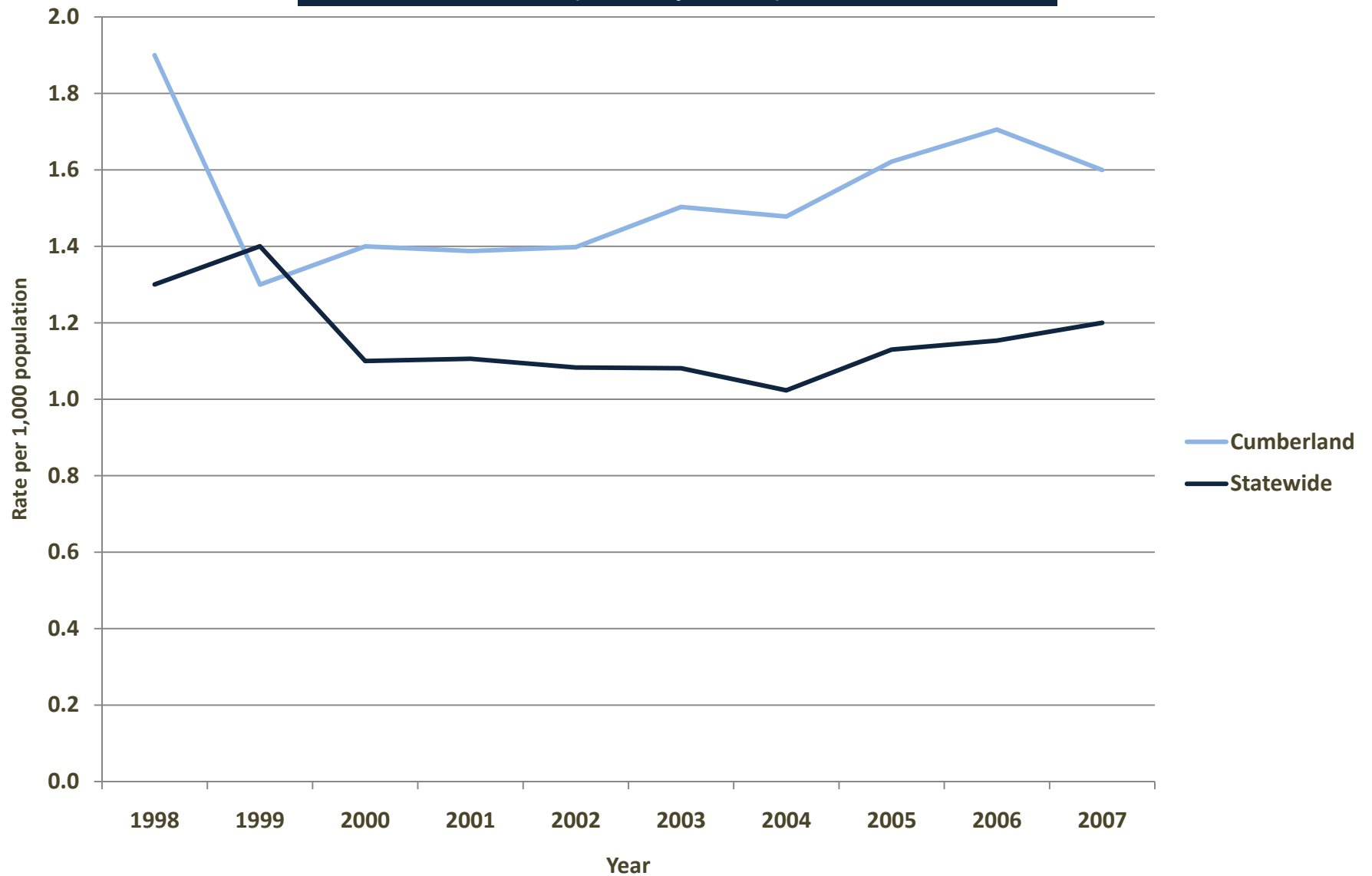
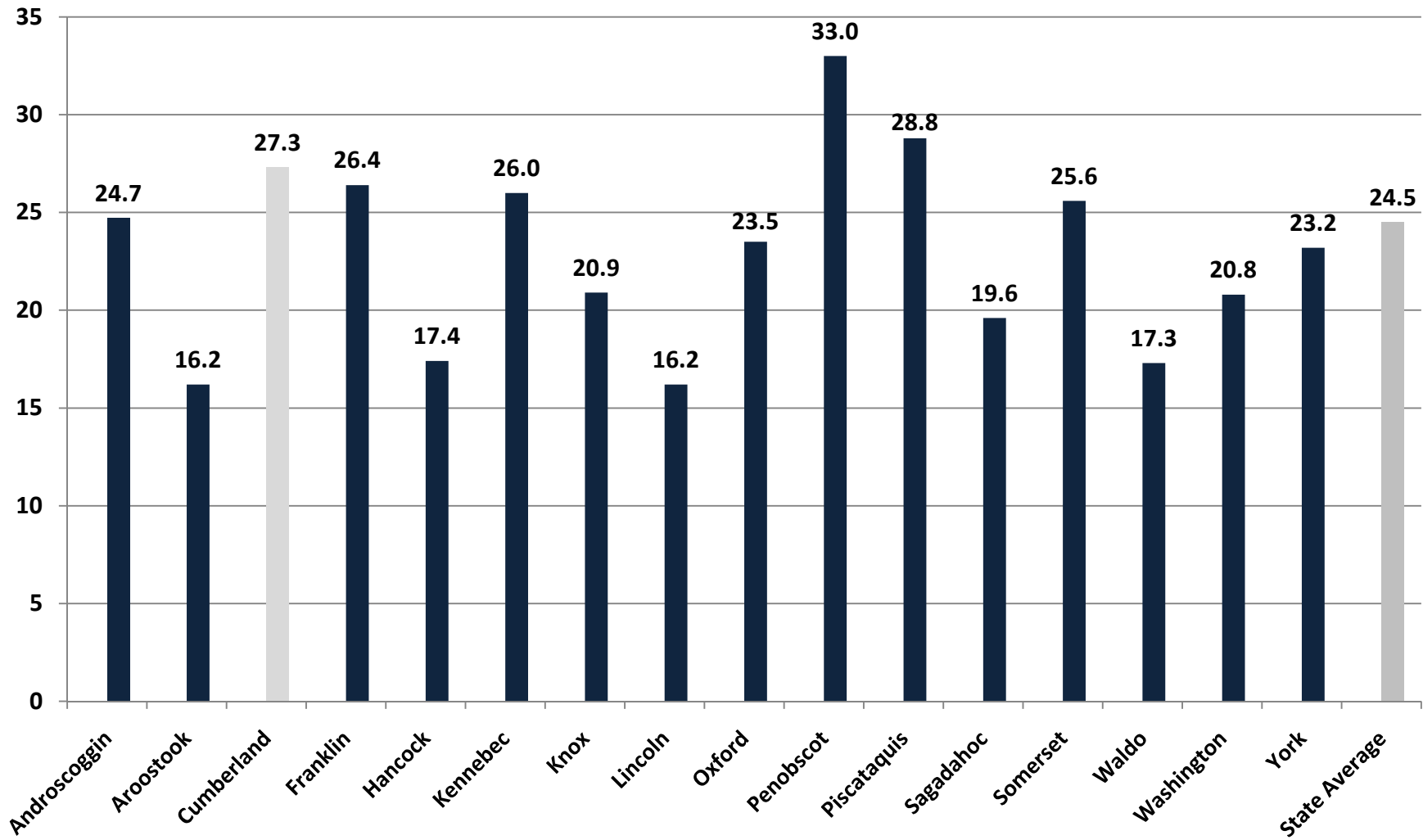


Cumberland - Violent Crimes per 1,000 Residents (Total Population)

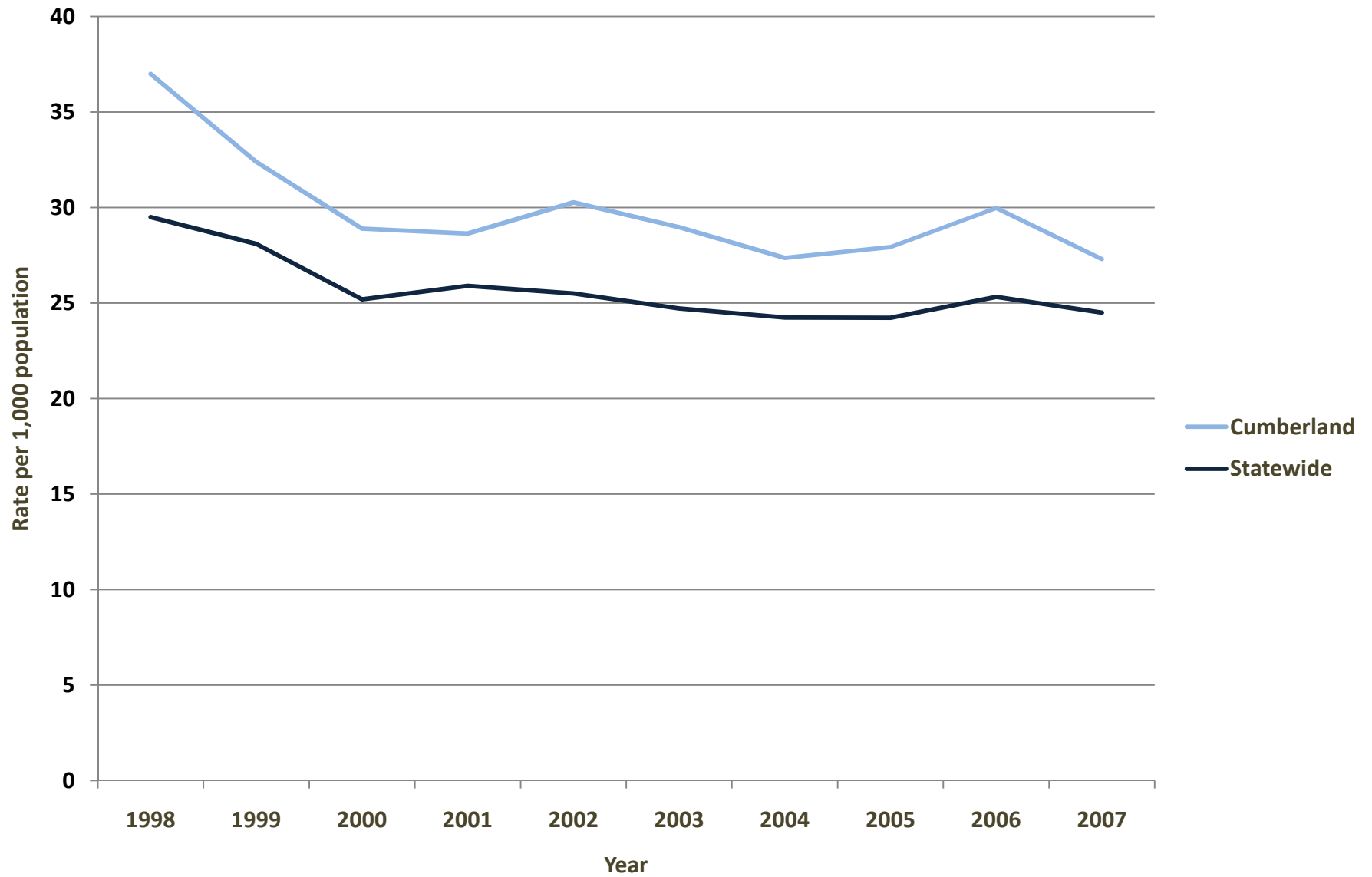


Property Crimes per 1,000 Residents, County Comparisons, 2007

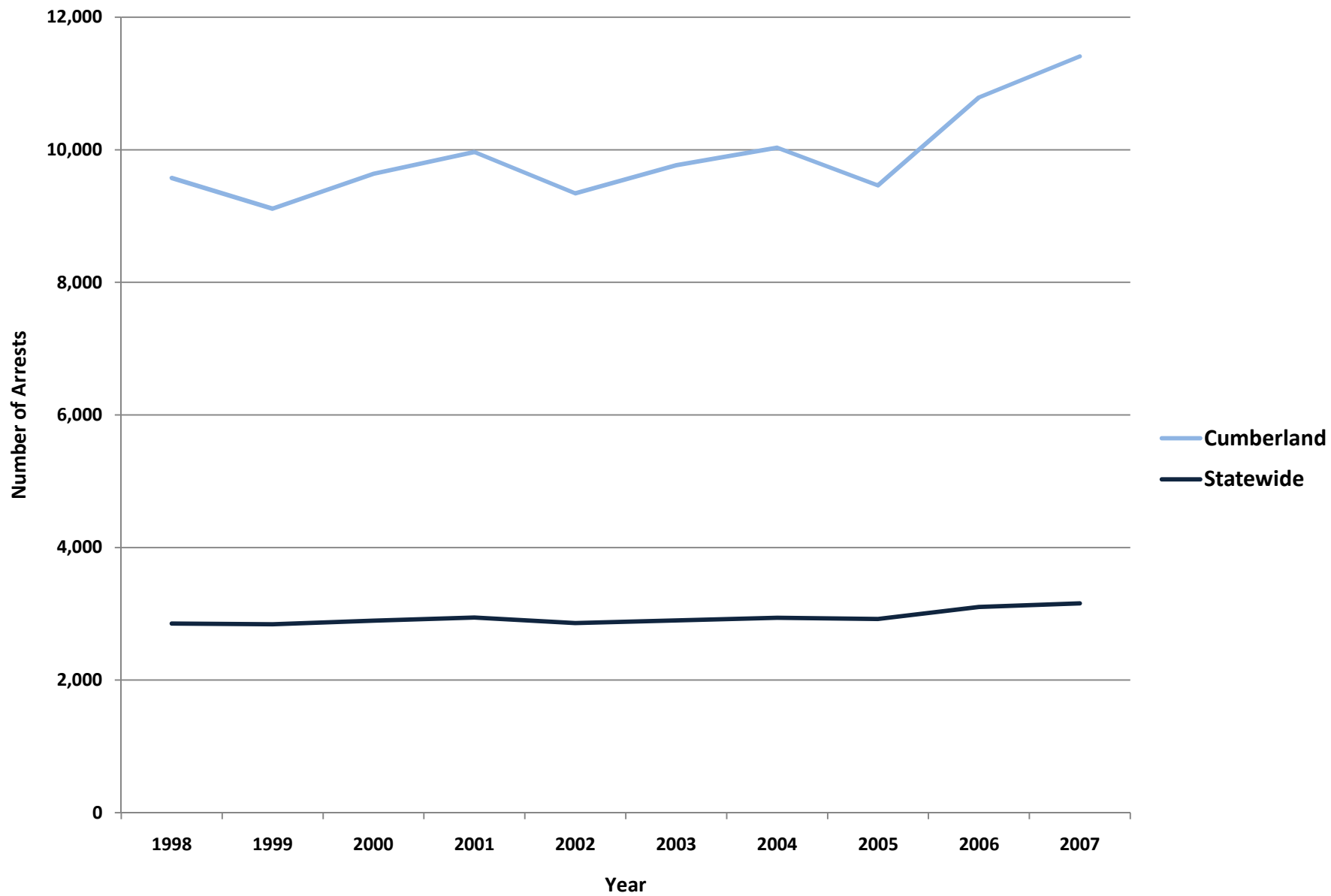
(Total Population)



Cumberland - Property Crimes per 1,000 Residents (Total Population)



Cumberland - Adult Arrests vs. Statewide Average



Cumberland - Adult Crime Statistics (2007)			
	Overall	Male	Female
Adult Arrests 2007	11,407	8,595	2,812
5-Year % Change	16.8%	12.1%	33.8%
10-Year % Change	19.1%	9.1%	65.4%
Crime Rates (2007)			
Index Crimes 2007 (per 1,000 pop.)	29.0	Crime Rates are calculated using both Adult & Juvenile Arrests	
5-Year % Change	-4.9%		
10-Year % Change	-25.4%		
Violent crimes 2007 (per 1,000 pop.)	1.6		
5-Year % Change	6.4%		
10-Year % Change	-15.8%		
Property crimes 2007 (per 1,000 pop.)	27.3		
5-Year % Change	-5.8%		
10-Year % Change	-26.2%		
Adult Arrests by Type (2007)			
	Adult - Overall	Adult - Female	Adult - Male
Murder & Non-negligent Manslaughter	2	0	2
Manslaughter by Negligence	0	0	0
Forcible Rape	12	0	12
Robbery	56	8	48
Aggravated Assault	112	14	98
Burglary, Breaking & Entering	196	26	170
Larceny-Theft (except Auto Theft)	1,358	514	844
Motor Vehicle Theft	59	10	49
Other Assaults	9,788	277	9,511
Arson	3	1	2
Forgery & Counterfeiting	72	28	44
Fraud	122	50	72
Embezzlement	24	15	9
Stolen Property: Buying, Receiving, Possessing	42	13	29
Vandalism	187	31	156
Weapons: Carrying, Possessing, etc.	169	10	159
Prostitution & Commercialized Vice	33	8	25
Sex Offenses	31	1	30
Drug Abuse Violations	1,134	282	852
Gambling	0	0	0
Offenses Against Family & Children	15	6	9
Driving Under the Influence	1,733	424	1,309
Liquor Laws	749	158	591
Drunkenness	2	1	1
Disorderly Conduct	243	46	197
All Other Offenses (Except Traffic)	3,925	889	3,036
Total	11,407	8,595	2,812

Cumberland- Juvenile Crime Statistics (2007)			
	Overall	Male	Female
Juvenile Arrests 2007	1,546	1,049	497
5-year % change Juvenile arrests	-12.6%	-13.4%	-10.8%
10-year % change Juvenile arrests	-25.4%	-25.3%	-25.7%
Juvenile Justice System Outcomes			
	Rate		Number
Referrals	39.39 per 1,000 population		1132
Diversions	36.40 per 100 referrals		412
Adjudications	33.4 per 100 petitions		314
Juvenile Arrests by Type (2007)			
	Juvenile Overall	Juvenile Male	Juvenile Female
Murder & Non-negligent Manslaughter	0	0	0
Manslaughter by Negligence	0	0	0
Forcible Rape	4	0	4
Robbery	10	2	8
Aggravated Assault	25	6	19
Burglary, Breaking & Entering	63	2	61
Larceny-Theft (except Auto Theft)	449	222	227
Motor Vehicle Theft	17	2	15
Other Assaults	182	55	127
Arson	7	1	6
Forgery & Counterfeiting	3	0	3
Fraud	2	2	0
Embezzlement	5	2	3
Stolen Property: Buying, Receiving, Possessing	5	0	5
Vandalism	72	8	64
Weapons: Carrying, Possessing, etc.	19	1	18
Prostitution & Commercialized Vice	0	0	0
Sex Offenses	15	0	15
Drug Abuse Violations	96	24	72
Gambling	0	0	0
Offenses Against Family & Children	0	0	0
Driving Under the Influence	22	6	16
Liquor Laws	168	58	110
Drunkenness	0	0	0
Disorderly Conduct	21	6	15
All Other Offenses (Except Traffic)	316	79	237
Curfew & Loitering	0	0	0
Runaways	45	21	24
Total	1,546	1,049	497

Referral: Number of juveniles referred to the juvenile justice system.

Diversion: Number of juveniles formally diverted by a juvenile community corrections officer (JCCO).

Adjudication: Number of juveniles found guilty by a court of law.

ACKNOWLEDGEMENTS

Author

William Ethridge, Muskie School Public Policy & Management Graduate Student

Research Supervisor

Mark Rubin, Research Associate, Muskie School of Public Service

SAC Staff Contributor (Juvenile Statistics)

Becky Noreus, Research Analyst, Muskie School of Public Service

Editors

Carmen Dorsey, Director, Muskie School of Public Service Justice Policy Program

George Shaler, Research Associate, Muskie School of Public Service

Format and Design

Sheri Moulton, Project Assistant, Muskie School of Public Service

Special thanks to the Maine Statistical Analysis Center Advisory Group

Roxy Hennings, CQI Director, Division of Juvenile Services, Maine Department of Corrections

Denise Lord, Deputy Commissioner, Maine Department of Corrections

Janet Joyeux, Assistant to the Commissioner, Maine Department of Public Safety

Barry Stoodley, Associate Commissioner of Juvenile Services, Maine Department of Corrections

Paul Vestal, Chair, Maine Criminal Justice Commission

Sherry Wilkins, Court Management Analyst, Maine Administrative Office of the Courts

Attribution

The Maine County Profile Justice Data was created under the auspices of the State Justice Statistics Program, Bureau of Justice Statistics (BJS), Department of Justice (DOJ). Funding was provided by BJS Grant 2008-BJ-CX-K034. The opinions, findings, and conclusions expressed in this publication are those of the authors and do not necessarily reflect the view of the Department of Justice.

All data included in the criminal justice highlights and the corresponding charts and tables was derived from the [2008 Maine Crime and Justice Data Book](#) and the [Maine Department of Public Safety](#) and the [Maine Department of Corrections Juvenile Recidivism Report](#).

Updated: 12/09

ABOUT THE UNIVERSITY OF SOUTHERN MAINE (USM)
MUSKIE SCHOOL OF PUBLIC SERVICE

The USM Muskie School of Public Service educates leaders, informs public policy, and strengthens civic life through its graduate degree programs, research institutes and public outreach activities. By making the essential connection between research, practice, and informed public policy, the School is dedicated to improving the lives of people of all ages, in every county in Maine and every state in the nation.

This report is available on the Justice Policy Program Website:
<http://muskie.usm.maine.edu/justiceresearch>