



KNOX COUNTY

Justice Profile

USM Muskie School of Public Service
Maine Statistical Analysis Center



Knox County Facts

- *Knox County, incorporated in 1860, is the last county incorporated in the State of Maine.*
- *Knox County is in mid-coast Maine with Rockland as its county seat. It includes the town of Camden, a popular summer destination. Shipbuilding, lime processing, granite quarrying, commercial fishing and lobstering have all figured in Rockland's industrial past.*
- *3% of Maine's total population resides in Knox County.*
- *In 2007, the juvenile population of Knox Country was estimated at 8,088¹.*

Population by Gender and Age, 2007 ²			
Gender/Age Group	Number	Percent of Total	
		Knox	Maine
Total	40,879	100.0%	100.0%
Male	20,173	49.3%	48.8%
Female	20,706	50.7%	51.2%
Under 14	6,567	16.1%	17.3%
15 to 24	4,519	11.1%	12.9%
25 to 34	4,582	11.2%	11.3%
35 to 44	5,690	13.9%	14.7%
45 to 54	6,920	16.9%	16.5%
55 to 64	5,537	13.5%	12.6%
65 to 74	3,473	8.5%	7.5%
75 to 84	2,882	7.1%	5.3%
85+	709	1.7%	1.9%
Median Age	-	44	41

¹OJDDP Statistical Briefing Book

²Maine Department of Labor, 2007

Demographic Facts³

- Population growth in Knox County has been declining in recent years. Although it had an overall increase of 2.3% from 2000 to 2008, this is below the statewide average of 3.3%.
- The population is the older than the statewide average.
 - Persons under 18 account for 19.8% of Knox County's population compared with the statewide average of 21.2%.
- Educational attainment is higher than the statewide average.
 - 87.5% of those ages 25+ in Knox County have graduated from high school compared with the statewide average of 85.4%.
 - 26.2% of those ages 25+ in Knox County have obtained a bachelor's degree or higher compared with the statewide average of 22.9%.
- Most income measures are lower than the statewide average; nonetheless, the poverty rate is below the statewide average.
 - The median household income in Knox County is \$44,619 compared with a statewide average of \$45,832.
 - 10.6% of Knox County residents live below the poverty line compared with a statewide average of 12.2%.
- Population density: 111 people per square mile
- Largest cities (population): Rockland (7,480), Camden (5,235), Warren (4,205)

³Ibid.

Adult Criminal Justice Highlights

THE RATES OF ADULTS ARRESTS AND INDEX CRIMES HAVE BOTH DECLINED OVER THE PAST 10 YEARS.

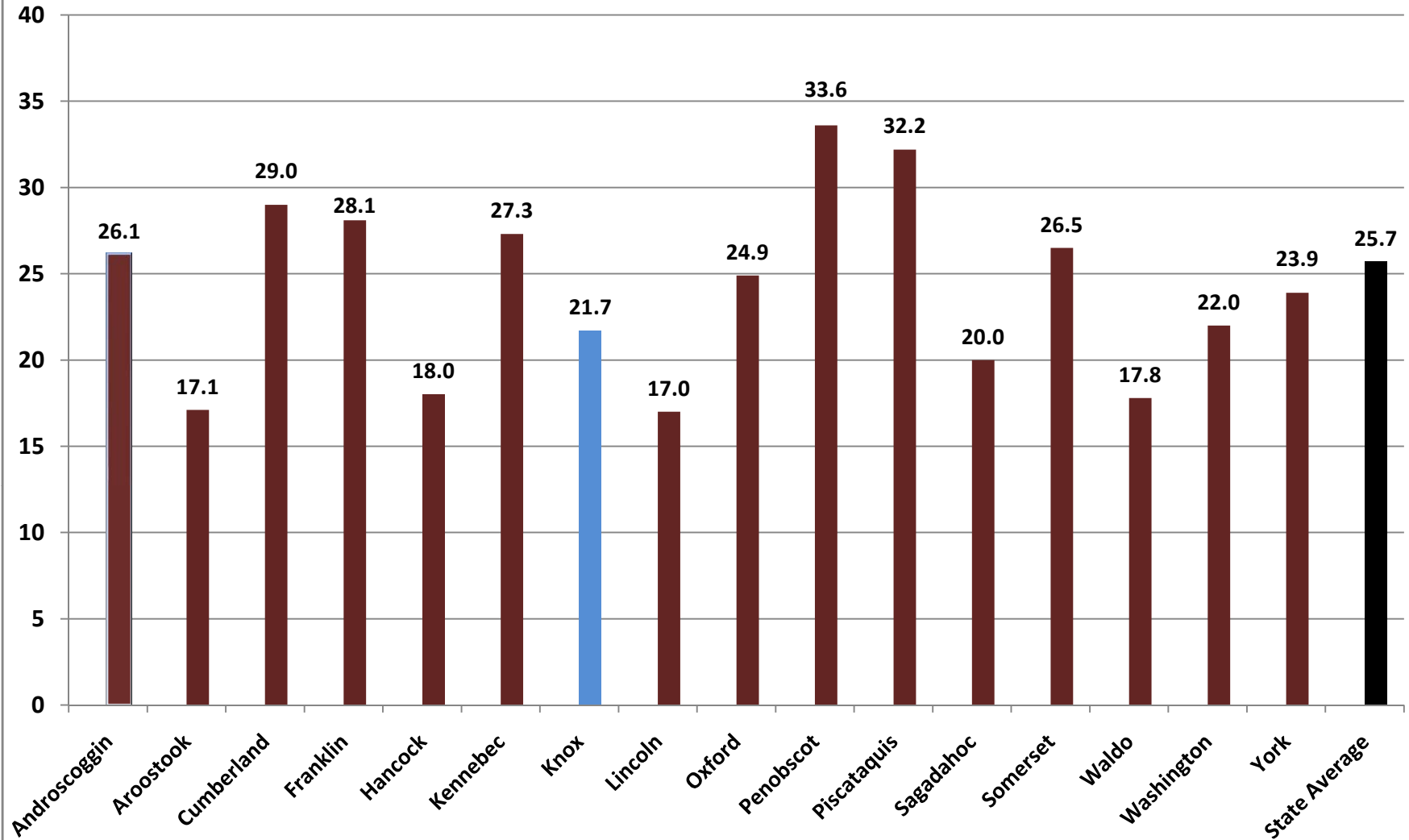
- Adult arrests decreased by 12.3% over the last 5 years and decreased by 25.1% over the last 10 years.
- Index crimes decreased by 10.7% over the last 5 years. Over 10 years, the index crime rate increased only 1.9%.
- In 2007, there were 21.7 index crimes per 1,000 residents. This is lower than the statewide rate of 25.7 index crimes per 1,000 residents.

Juvenile Justice Highlights

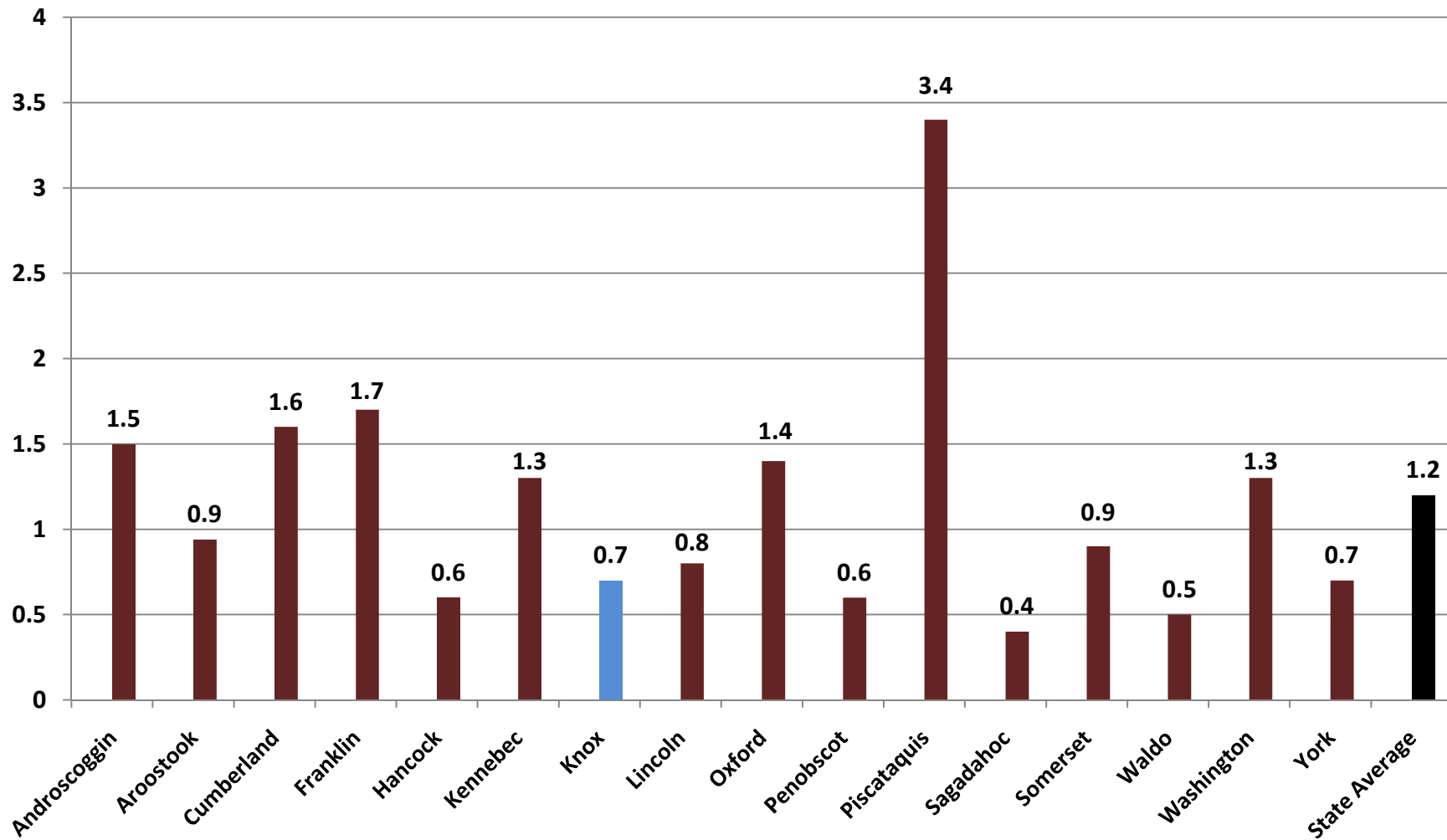
JUVENILE ARRESTS HAVE DECLINED OVER THE PAST 10 YEARS, AND RECIDIVISM AND FIRST TIME ADJUDICATION RATES ARE BELOW THE STATEWIDE AVERAGE.

- Juvenile arrests have decreased 51.4% over the past 5 years and decreased 56.2% over the past 10 years.
- The juvenile recidivism rate for the 2005 cohort was 24%. This was comparable to the statewide average of 27% in 2005.
- In 2005, Knox County had a juvenile first time adjudication rate of 7.4 per 1,000 residents. This was a 50% decline from the 2004 rate. The statewide average was 8.4 per 1,000 residents in 2005.

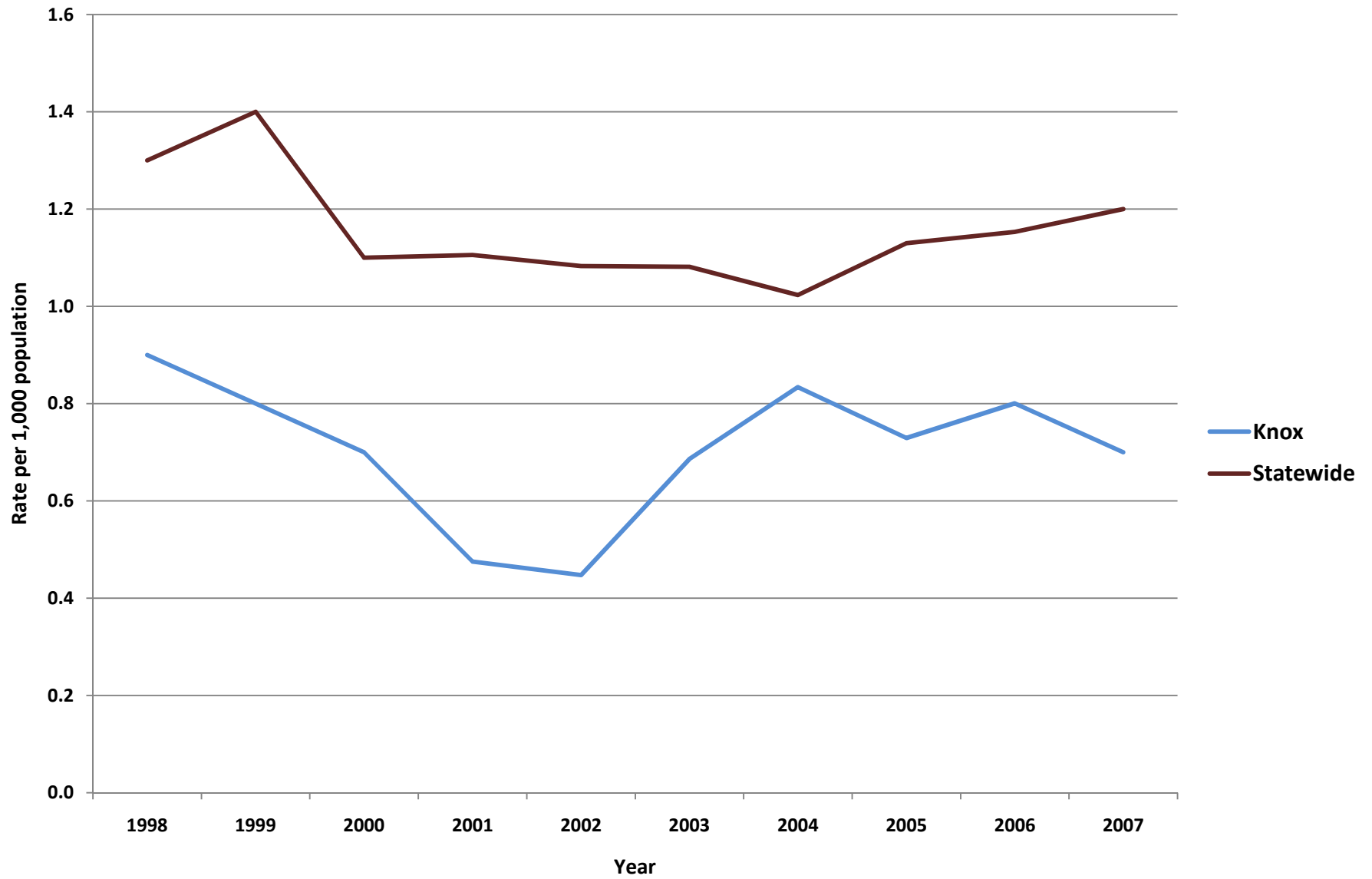
Index Crimes per 1,000 Residents, County Comparisons, 2007 (Total Population)



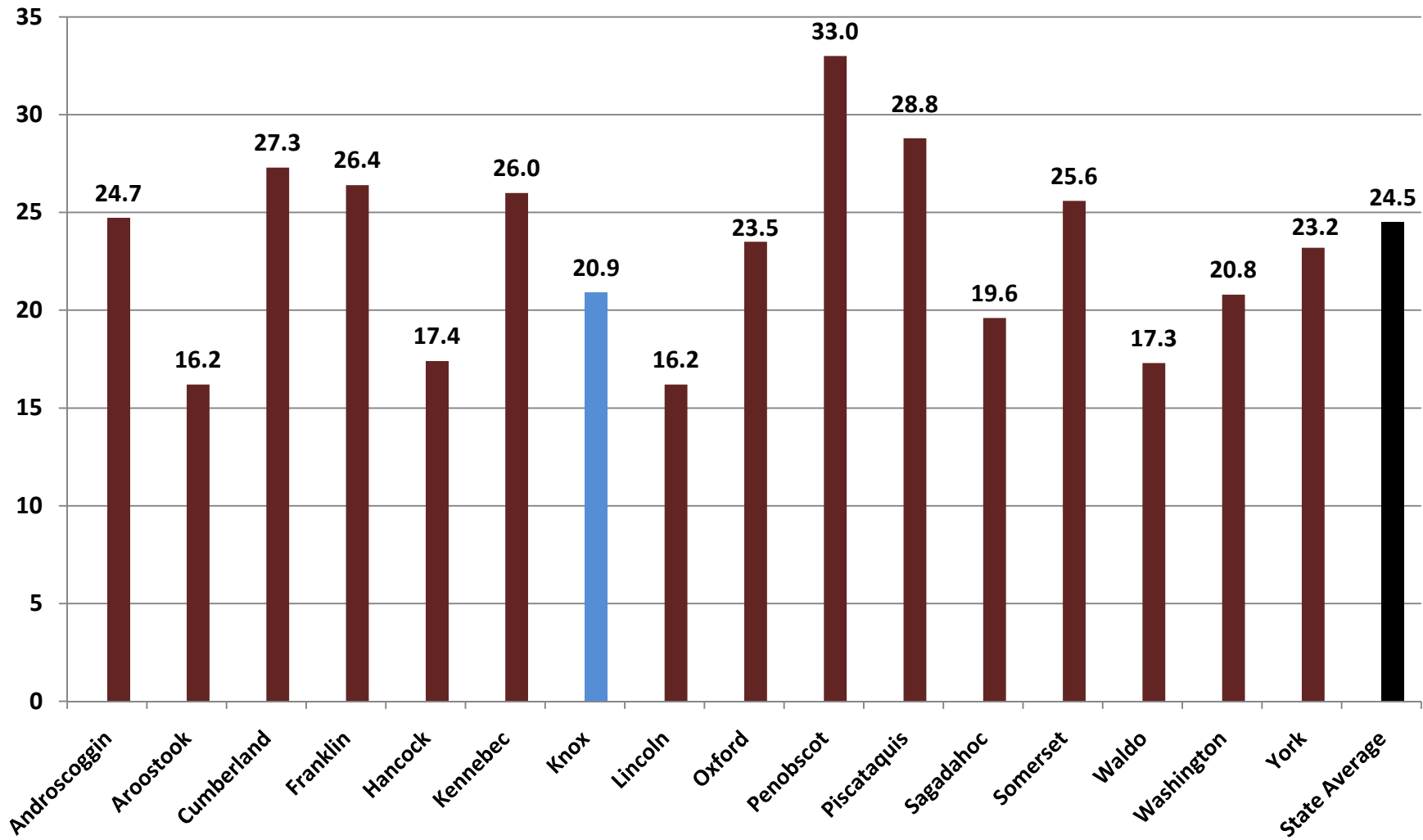
Violent Crimes per 1,000 Residents, County Comparisons, 2007 (Total Population)



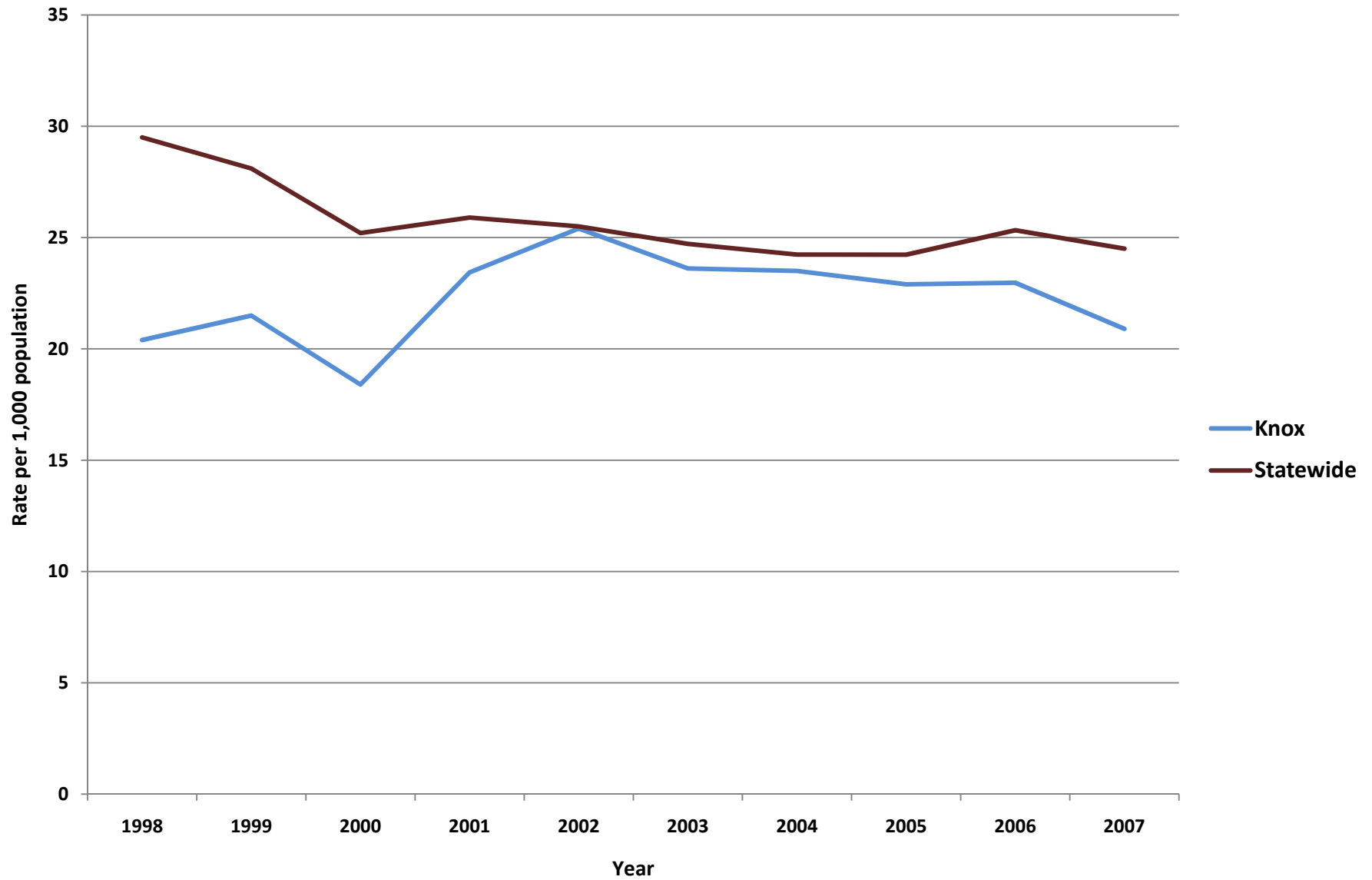
Knox - Violent Crimes per 1,000 Residents (Total Population)



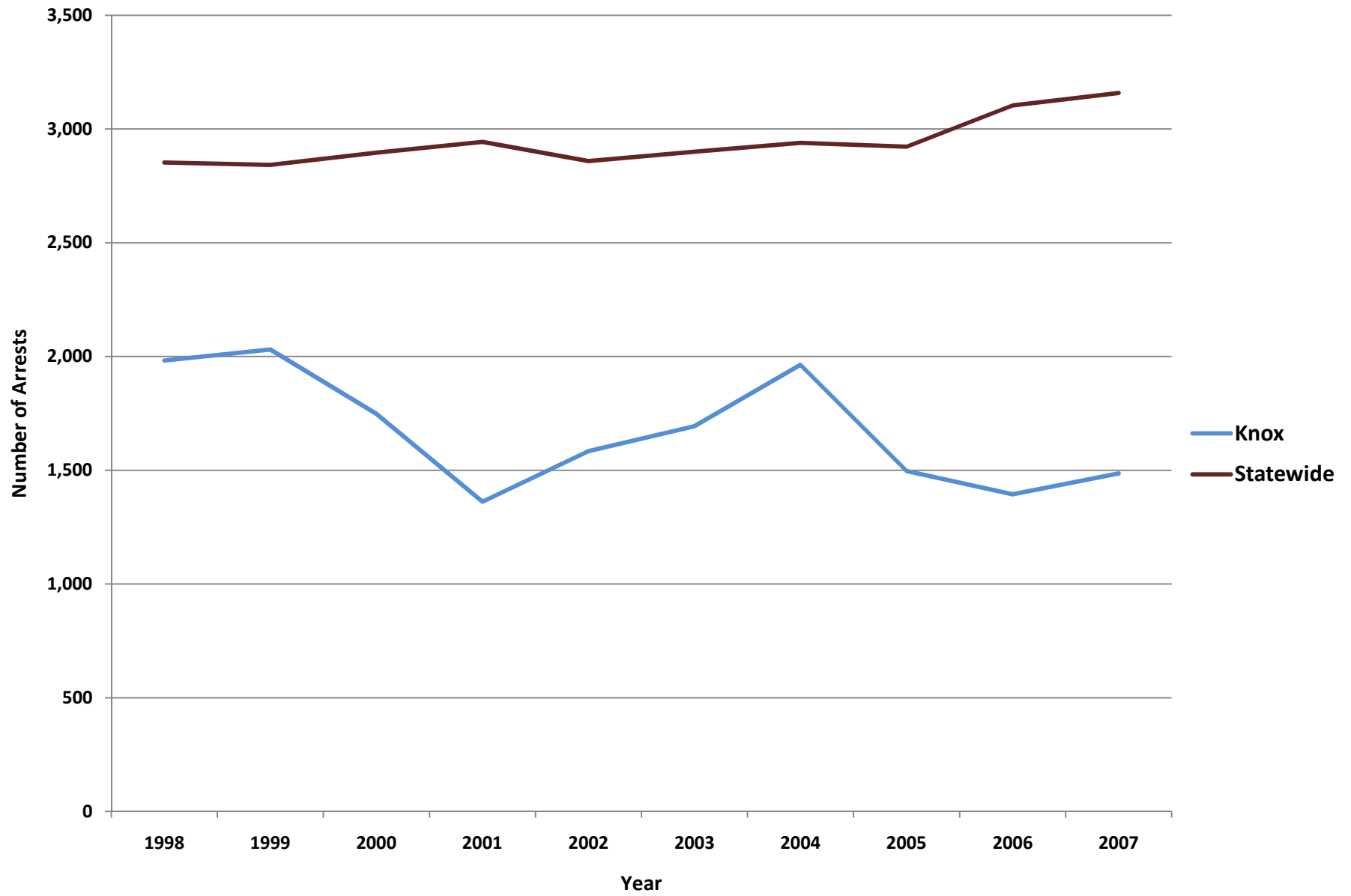
Property Crimes per 1,000 Residents, County Comparisons, 2007 (Total Population)



Knox - Property Crimes per 1,000 Residents (Total Population)



Knox - Adult Arrests Vs. Statewide Average



Knox - Adult Crime Statistics (2007)					
	Overall	Male	Female		
Adult Arrests 2007	1,485	1,077	408		
5-Year % Change	-12.3%	-17.4%	4.9%		
10-Year % Change	-25.1%	-33.3%	11.2%		
Crime Rates (2007)					
Index Crimes 2007 (per 1,000 pop.)	21.7	Crime Rates are calculated using both Adult & Juvenile Arrests			
5-Year % Change	-10.7%				
10-Year % Change	1.9%				
Violent crimes 2007 (per 1,000 pop.)	0.7				
5-Year % Change	2.1%				
10-Year % Change	-22.2%				
Property crimes 2007 (per 1,000 pop.)	20.9				
5-Year % Change	-11.5%				
10-Year % Change	2.5%				
Adult Arrests by Type (2007)					
	Adult - Overall			Adult - Male	Adult - Female
Murder & Non-negligent Manslaughter	0			0	0
Manslaughter by Negligence	0	0	0		
Forcible Rape	0	0	0		
Robbery	0	0	0		
Aggravated Assault	7	6	1		
Burglary, Breaking & Entering	16	15	1		
Larceny-Theft (except Auto Theft)	112	60	52		
Motor Vehicle Theft	5	5	0		
Other Assaults	129	100	29		
Arson	1	1	0		
Forgery & Counterfeiting	8	4	4		
Fraud	11	4	7		
Embezzlement	0	0	0		
Stolen Property: Buying, Receiving, Possessing	7	7	0		
Vandalism	46	37	9		
Weapons: Carrying, Possessing, etc.	5	4	1		
Prostitution & Commercialized Vice	0	0	0		
Sex Offenses	12	12	0		
Drug Abuse Violations	233	168	65		
Gambling	0	0	0		
Offenses Against Family & Children	30	26	4		
Driving Under the Influence	195	145	50		
Liquor Laws	93	62	31		
Drunkenness	12	9	3		
Disorderly Conduct	30	27	3		
All Other Offenses (Except Traffic)	533	385	148		
Total	1,485	1,077	408		

Knox- Juvenile Crime Statistics (2007)			
	Overall	Male	Female
Juvenile Arrests 2007	187	116	71
5-year % change Juvenile arrests	-51.4%	-60.9%	-19.3%
10-year % change Juvenile arrests	-56.2%	-60.9%	-45.4%
Juvenile Justice System Outcomes			
	Rate	Number	
Referrals	37.38 per 1,000 population	144	
Diversions	42.36 per 100 referrals	61	
Adjudications	73.40 per 100 petitions	69	
Juvenile Arrests by Type (2007)			
	Juvenile Overall	Juvenile Male	Juvenile Female
Murder & Non-negligent Manslaughter	0	0	0
Manslaughter by Negligence	0	0	0
Forcible Rape	0	0	0
Robbery	0	0	0
Aggravated Assault	1	0	1
Burglary, Breaking & Entering	12	11	1
Larceny-Theft (except Auto Theft)	21	10	11
Motor Vehicle Theft	2	2	0
Other Assaults	14	11	3
Arson	0	0	0
Forgery & Counterfeiting	1	0	1
Fraud	1	0	1
Embezzlement	0	0	0
Stolen Property: Buying, Receiving, Possessing	3	2	1
Vandalism	15	12	3
Weapons: Carrying, Possessing, etc.	1	1	0
Prostitution & Commercialized Vice	0	0	0
Sex Offenses	0	0	0
Drug Abuse Violations	19	16	3
Gambling	0	0	0
Offenses Against Family & Children	2	0	2
Driving Under the Influence	12	8	4
Liquor Laws	55	26	29
Drunkenness	3	1	2
Disorderly Conduct	1	0	1
All Other Offenses (Except Traffic)	23	16	7
Curfew & Loitering	1	0	1
Runaways	0	0	0
Total	187	116	71

Referral: Number of juveniles referred to the juvenile justice system.

Diversion: Number of juveniles formally diverted by a juvenile community corrections officer (JCCO).

Adjudication: Number of juveniles found guilty by a court of law.

ACKNOWLEDGEMENTS

Author

William Ethridge, Muskie School Public Policy & Management Graduate Student

Research Supervisor

Mark Rubin, Research Associate, Muskie School of Public Service

SAC Staff Contributor (Juvenile Statistics)

Becky Noreus, Research Analyst, Muskie School of Public Service

Editors

Carmen Dorsey, Director, Muskie School of Public Service Justice Policy Program

George Shaler, Research Associate, Muskie School of Public Service

Format and Design

Sheri Moulton, Project Assistant, Muskie School of Public Service

Special thanks to the Maine Statistical Analysis Center Advisory Group

Roxy Hennings, CQI Director, Division of Juvenile Services, Maine Department of Corrections

Denise Lord, Deputy Commissioner, Maine Department of Corrections

Janet Joyeux, Deputy Commissioner, Maine Department of Public Safety

Barry Stoodley, Associate Commissioner of Juvenile Services, Maine Department of Corrections

Paul Vestal, Chair, Maine Criminal Justice Commission

Sherry Wilkins, Court Management Analyst, Maine Administrative Office of the Courts

Attribution

The Maine County Profile Justice Data was created under the auspices of the State Justice Statistics Program, Bureau of Justice Statistics (BJS), Department of Justice (DOJ). Funding was provided by BJS Grant 2008-BJ-CX-K034. The opinions, findings, and conclusions expressed in this publication are those of the authors and do not necessarily reflect the view of the Department of Justice.

All data included in the criminal justice highlights and the corresponding charts and tables was derived from the [2008 Maine Crime and Justice Data Book](#) and the [Maine Department of Public Safety](#) and the [Maine Department of Corrections Juvenile Recidivism Report](#).

Updated: 12/09

ABOUT THE UNIVERSITY OF SOUTHERN MAINE (USM)
MUSKIE SCHOOL OF PUBLIC SERVICE

The USM Muskie School of Public Service educates leaders, informs public policy, and strengthens civic life through its graduate degree programs, research institutes and public outreach activities. By making the essential connection between research, practice, and informed public policy, the School is dedicated to improving the lives of people of all ages, in every county in Maine and every state in the nation.

*This report is available on the Justice Policy Program Website:
<http://muskie.usm.maine.edu/justiceresearch>*