



LINCOLN COUNTY

Justice Data

USM Muskie School of Public Service
Maine Statistical Analysis Center



Lincoln County Facts

- *Lincoln County, incorporated in 1760, is a coastal county with 451 miles of coastline.*
- *Commercial fishing, lobstering, boat building and other coastal activities account for a part of Lincoln's economic base.*
- *The county includes many small, picturesque coastal communities that are popular summer destinations, such as Wiscasset, the county seat, and Boothbay Harbor.*
- *3% of Maine's population resides in Lincoln County.*
- *In 2007, the juvenile population in Lincoln County was estimated at 6,746¹.*

Population by Gender and Age, 2007 ²			
Gender/Age Group	Number	Percent of Total	
		Lincoln	Maine
Total	34,837	100.0%	100.0%
Male	16,970	48.7%	48.8%
Female	17,867	51.3%	51.2%
Under 14	5,460	15.7%	17.3%
15 to 24	3,754	10.8%	12.9%
25 to 34	3,508	10.1%	11.3%
35 to 44	4,685	13.4%	14.7%
45 to 54	5,739	16.5%	16.5%
55 to 64	5,172	14.8%	12.6%
65 to 74	3,266	9.4%	7.5%
75 to 84	2,197	6.3%	5.3%
85+	1,056	3.0%	1.9%
Median Age	-	45	41

¹OJJD Statistical Briefing Book

²Maine Department of Labor, 2007

Demographic Facts³

- Population growth in Lincoln County (3.0% increase from 2000 to 2008) has been close to the statewide rate in recent years (3.3% increase from 2000 to 2008).
- The population is older than the statewide average.
 - Persons under 18 account for 19.4% of Lincoln County's population compared with the statewide average of 21.2%.
- Educational attainment is higher than the statewide average.
 - 87.9% of those ages 25+ in Lincoln County have graduated from high school compared with the statewide average of 85.4%.
 - 26.6% of those ages 25+ in Lincoln County have obtained a bachelor's degree or higher compared with the statewide average of 22.9%.
- Most income measures are similar to statewide averages; however, poverty is lower than the state average.
 - The median household income in Lincoln County is \$45,816 compared with a statewide average of \$45,832.
 - 10.8% of Lincoln County residents live below the poverty line compared with a statewide average of 12.2%.
- Population density: 76 people per square mile
- Largest cities (population): Waldoboro (5,034), Wiscasset (3,793), Boothbay (3,223)

³ibid.

Adult Criminal Justice Highlights

LINCOLN COUNTY HAS THE LOWEST RATE OF INDEX CRIMES IN THE STATE. HOWEVER, THE ADULT ARREST RATE HAS RISEN DRAMATICALLY OVER THE PAST 10 YEARS.

- The adult arrest rate has risen dramatically, increasing by 74.3% over the last 5 years and increasing by 107.8% over the last 10 years.
- In 2007, Lincoln County had the lowest rate of index crimes- 17.0 per 1,000 residents. The state average is 25.7 per 1,000 residents.
- The index crime rate has remained relatively constant, registering an 8.6% decrease over 5 years and a 0.6% increase over 10 years. Nonetheless, violent crime showed a 60.0% increase over the past 10 years.

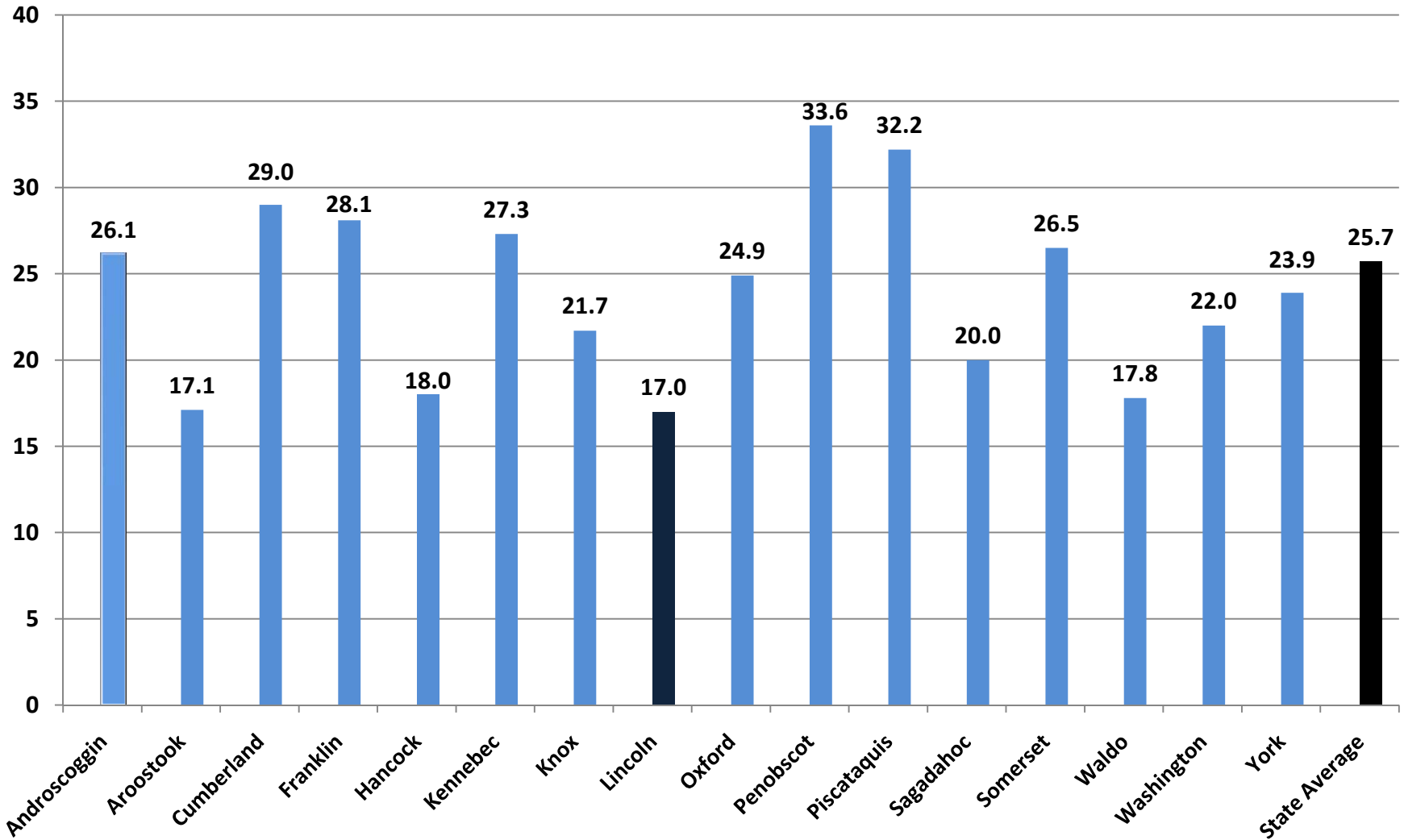
Juvenile Justice Highlights

JUVENILE ARRESTS HAVE SHOWN AN INCREASE OVER THE PAST 10 YEARS. HOWEVER, IN 2005, LINCOLN COUNTY HAD THE SECOND LOWEST RATE OF FIRST TIME JUVENILE ADJUDICATIONS.

- The juvenile arrest rate has increased by 24.3% over the last 5 years and increased by 67.3% over the last 10 years.
- In 2005, the rate of juveniles adjudicated for the first time in 2005 was 4.7 per 1,000 residents. This was a 57% decline from the previous year and the second lowest rate of first time juvenile adjudications in the state.
- In 2005, the juvenile recidivism rate was 26%. This was comparable to the statewide average of 27%.

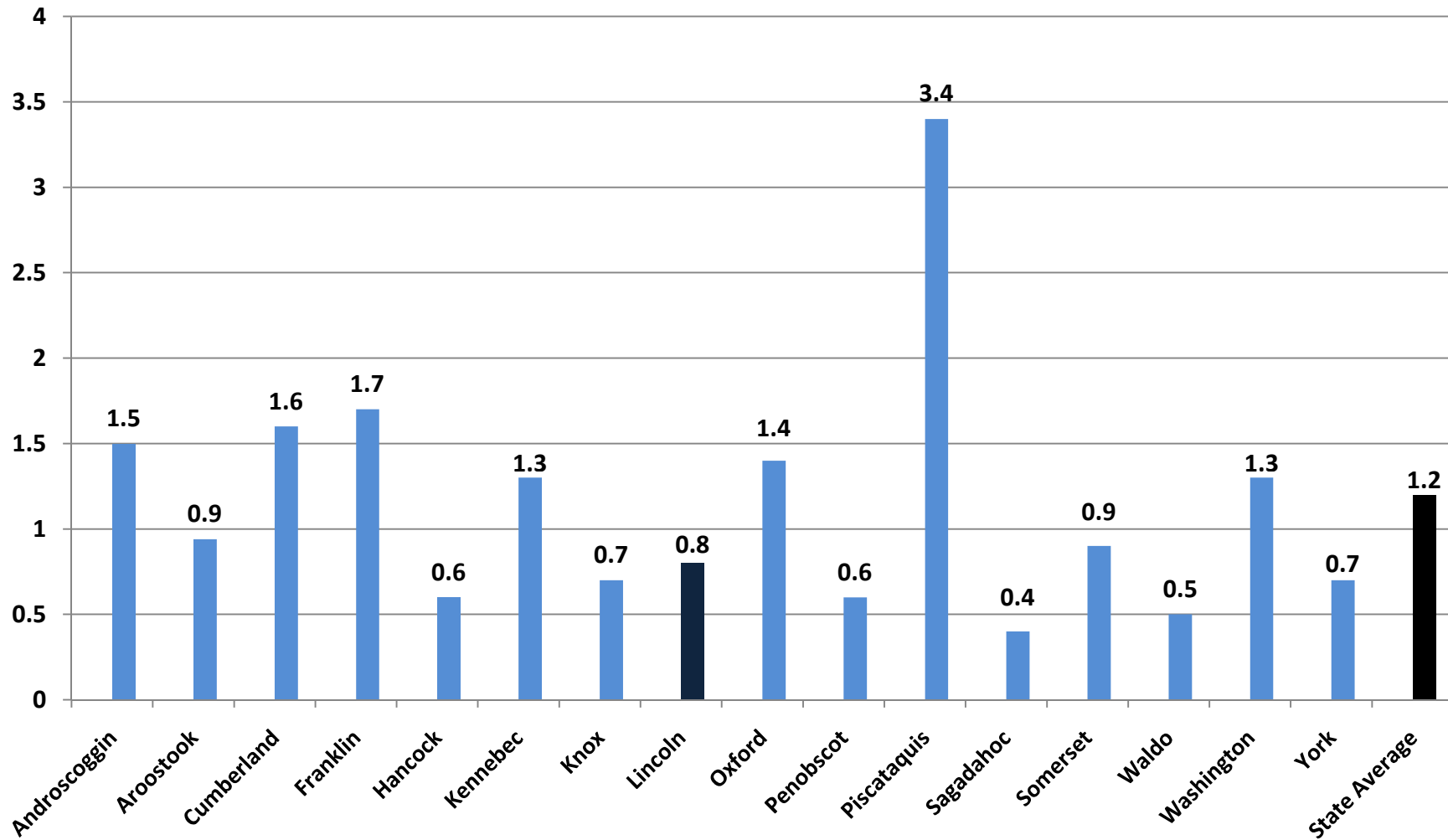
Index Crimes per 1,000 Residents, County Comparisons, 2007

(Total Population)

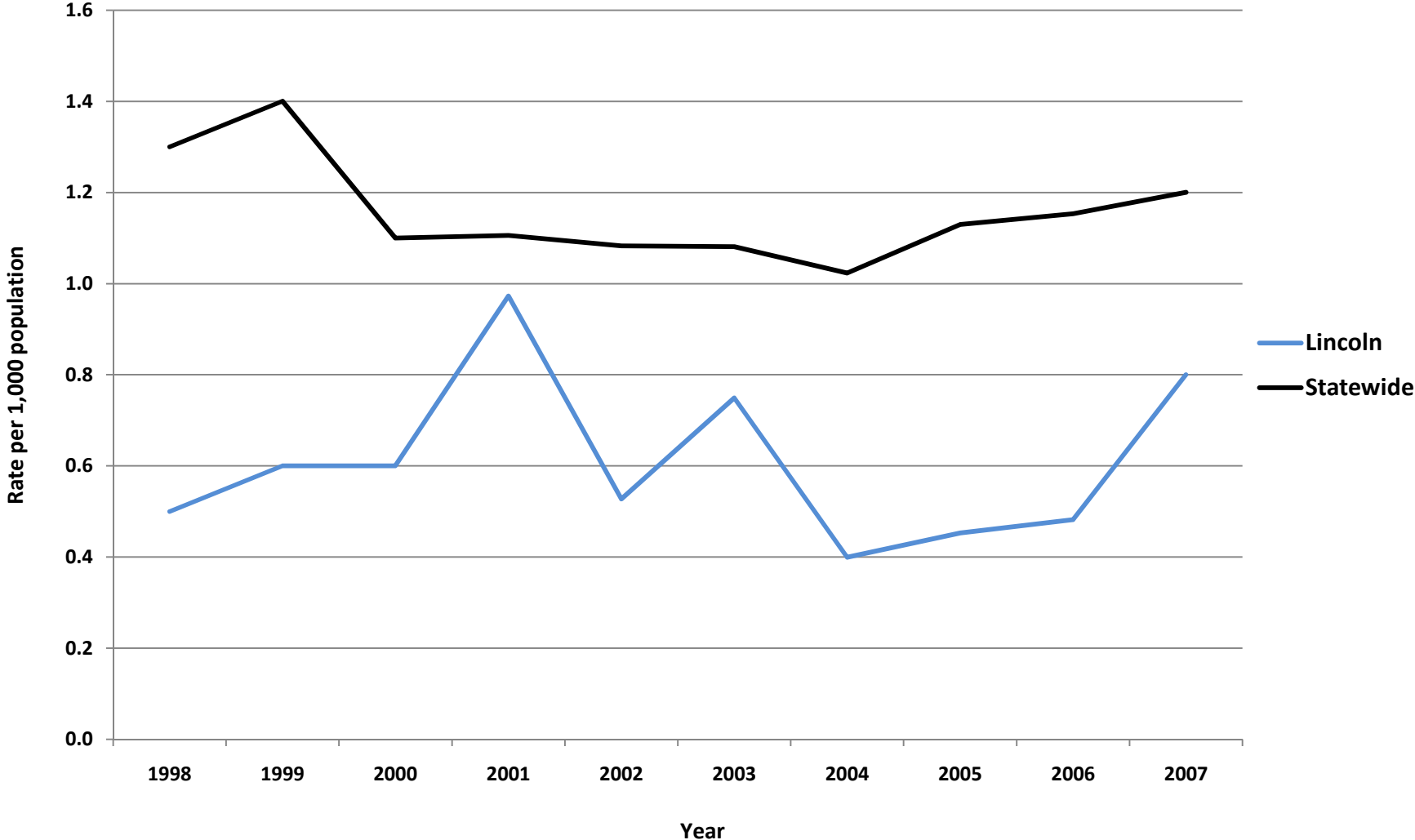


Violent Crimes per 1,000 Residents, County Comparisons, 2007

(Total Population)

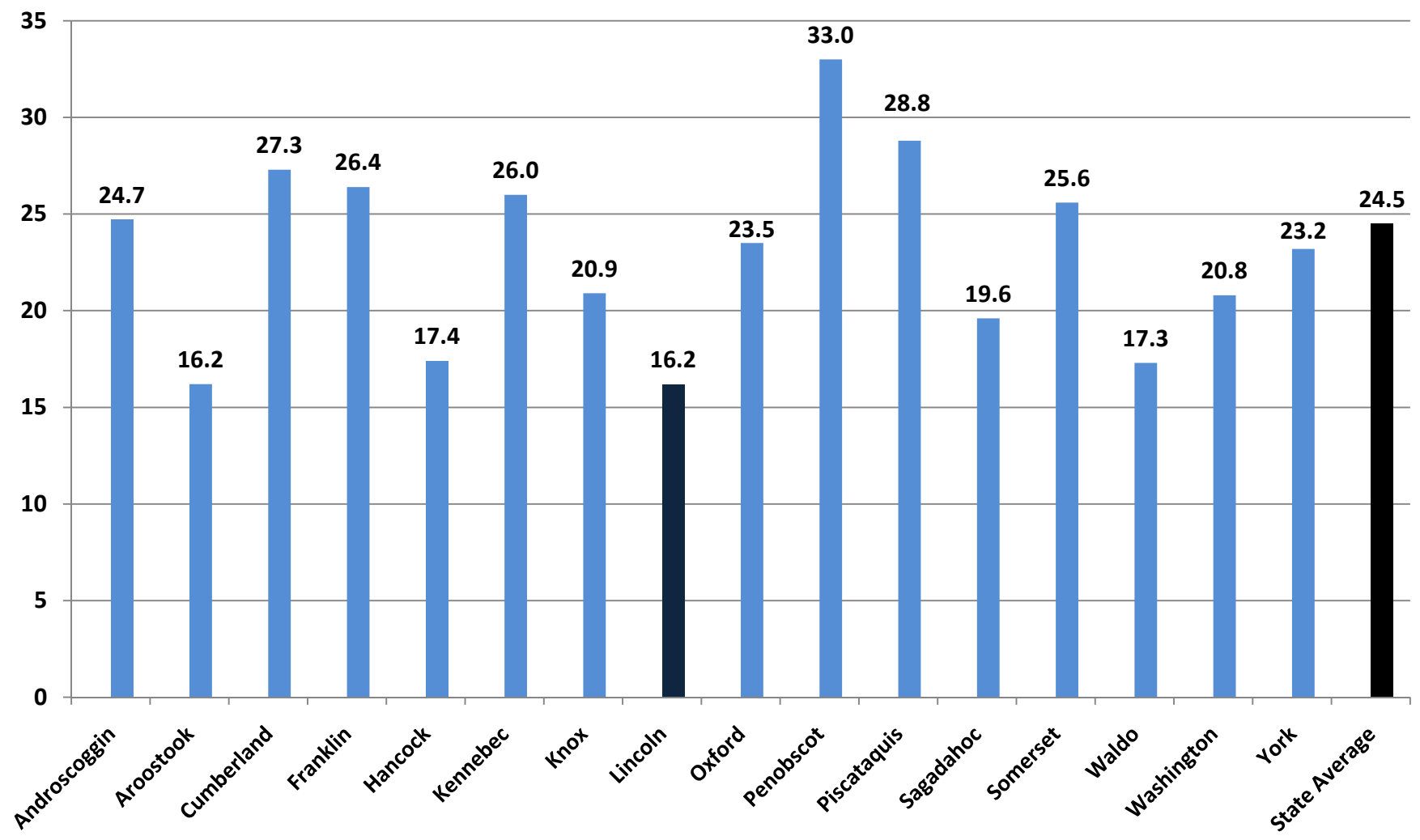


Lincoln- Violent Crimes per 1,000 Residents (Total Population)

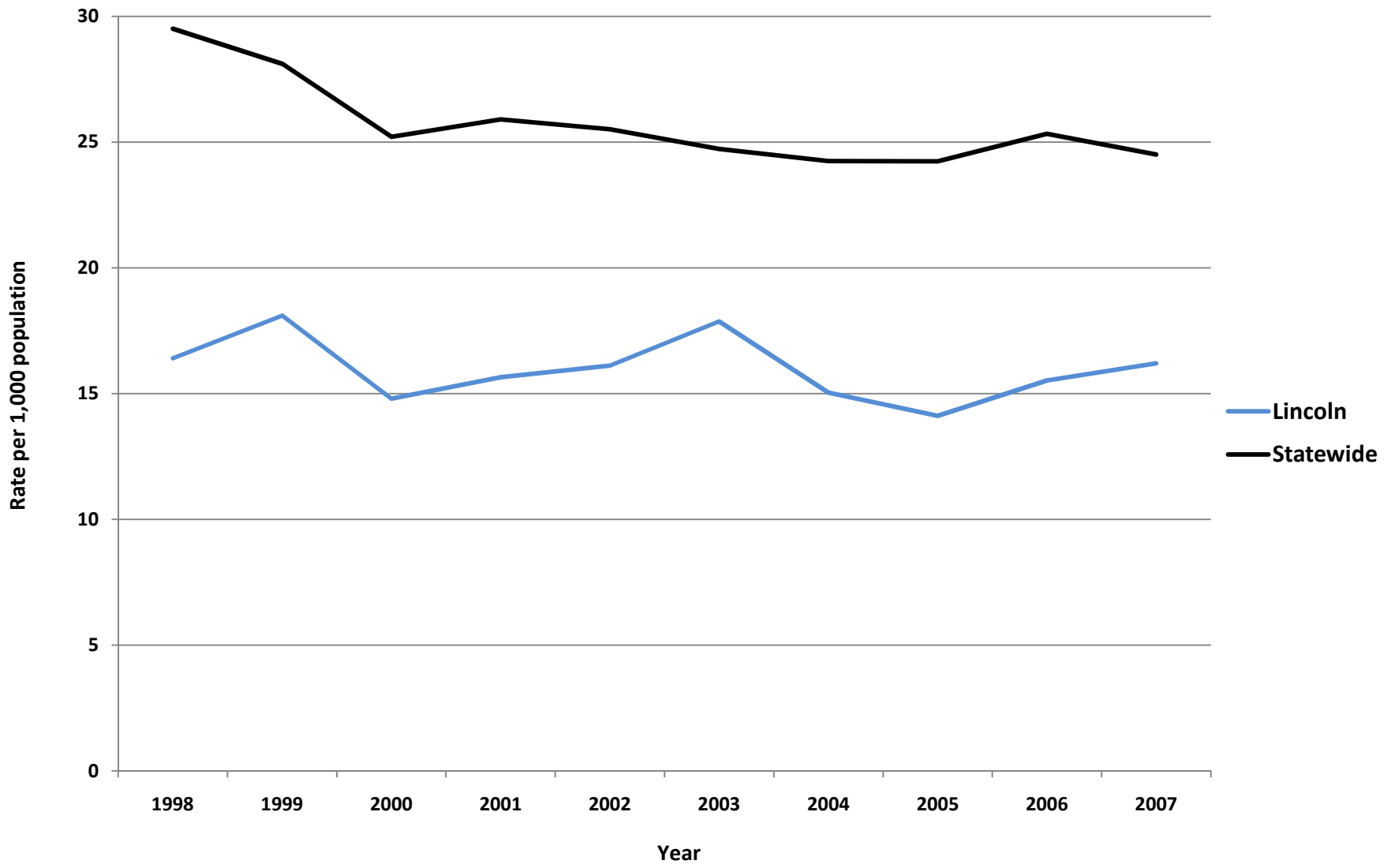


Property Crimes per 1,000 Residents, County Comparisons, 2007

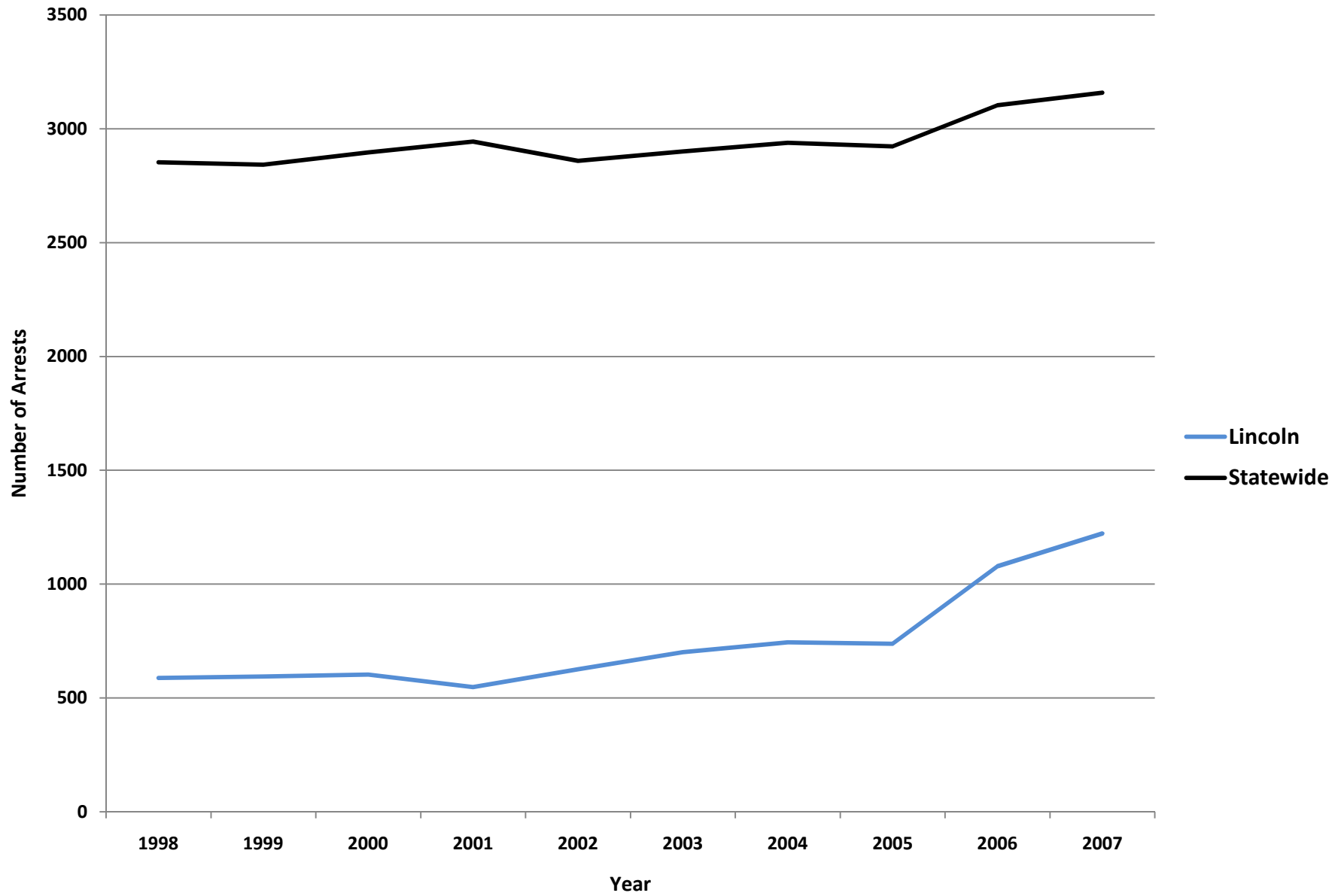
(Total Population)



Lincoln - Property Crimes per 1,000 Residents (Total Population)



Lincoln - Adult Arrests vs. Statewide Average



Lincoln- Adult Crime Statistics (2007)

	Overall	Male	Female
Adult Arrests 2007	1,222	940	282
5-Year % Change	74.3%	70.0%	90.5%
10-Year % Change	107.8%	91.4%	190.7%

Crime Rates (2007)

Index Crimes 2007 (per 1,000 pop.)	17	Crime Rates are calculated using both Adult & Juvenile Arrests
5-Year % Change	-8.7%	
10-Year % Change	0.6%	
Violent crimes 2007 (per 1,000 pop.)	0.8	
5-Year % Change	6.8%	
10-Year % Change	60.0%	
Property crimes 2007 (per 1,000 pop.)	16.2	
5-Year % Change	-9.3%	
10-Year % Change	-1.2%	

Adult Arrests by Type (2007)

	Adult Overall	Adult Male	Adult Female
Murder & Non-negligent Manslaughter	1	1	0
Manslaughter by Negligence	0	0	0
Forcible Rape	6	6	0
Robbery	2	2	0
Aggravated Assault	4	4	0
Burglary, Breaking & Entering	23	18	5
Larceny-Theft (except Auto Theft)	57	33	24
Motor Vehicle Theft	6	5	1
Other Assaults	139	108	31
Arson	0	0	0
Forgery & Counterfeiting	22	17	5
Fraud	17	13	4
Embezzlement	0	0	0
Stolen Property: Buying, Receiving, Possessing	2	1	1
Vandalism	29	21	8
Weapons: Carrying, Possessing, etc.	6	5	1
Prostitution & Commercialized Vice	0	0	0
Sex Offenses	5	5	0
Drug Abuse Violations	82	54	28
Gambling	1	1	0
Offenses Against Family & Children	4	4	0
Driving Under the Influence	161	133	28
Liquor Laws	95	78	17
Drunkenness	6	5	1
Disorderly Conduct	29	22	7
All Other Offenses (Except Traffic)	525	404	121
Total	1,222	940	282

Lincoln- Juvenile Crime Statistics (2007)

	Overall	Male	Female
Juvenile Arrests 2007	169	140	29
5-year % change Juvenile arrests	24.3%	28.4%	7.4%
10-year % change Juvenile arrests	67.3%	72.8%	45.0%

Juvenile Justice System Outcomes

	Rate	Number
Referrals	30.97 per 1,000 population	107
Diversions	65.42 per 100 referrals	70
Adjudications	44.44 per 100 petitions	28

Juvenile Arrests by Type (2007)

	Juvenile Overall	Juvenile Male	Juvenile Female
Murder & Non-negligent Manslaughter	0	0	0
Manslaughter by Negligence	0	0	0
Forcible Rape	0	0	0
Robbery	0	0	0
Aggravated Assault	1	1	0
Burglary, Breaking & Entering	8	8	0
Larceny-Theft (except Auto Theft)	29	26	3
Motor Vehicle Theft	6	5	1
Other Assaults	19	16	3
Arson	0	0	0
Forgery & Counterfeiting	0	0	0
Fraud	0	0	0
Embezzlement	0	0	0
Stolen Property: Buying, Receiving, Possessing	2	2	0
Vandalism	11	11	0
Weapons: Carrying, Possessing, etc.	0	0	0
Prostitution & Commercialized Vice	0	0	0
Sex Offenses	3	3	0
Drug Abuse Violations	5	4	1
Gambling	0	0	0
Offenses Against Family & Children	0	0	0
Driving Under the Influence	4	4	0
Liquor Laws	43	27	16
Drunkenness	0	0	0
Disorderly Conduct	1	1	0
All Other Offenses (Except Traffic)	35	30	5
Curfew & Loitering	0	0	0
Runaways	2	2	0
Total	169	140	29

Referral: Number of juveniles referred to the juvenile justice system.

Diversion: Number of juveniles formally diverted by a juvenile community corrections officer (JCCO).

Adjudication: Number of juveniles found guilty by a court of law.

All data included in the criminal justice highlights and the corresponding charts and tables was derived from the [2008 Maine Crime and Justice Data Book](#) and the [Maine Department of Public Safety](#) and [the Maine Department of Corrections Juvenile Recidivism Report](#).

Updated: 12/09

ABOUT THE UNIVERSITY OF SOUTHERN MAINE (USM)
MUSKIE SCHOOL OF PUBLIC SERVICE

The USM Muskie School of Public Service educates leaders, informs public policy, and strengthens civic life through its graduate degree programs, research institutes and public outreach activities. By making the essential connection between research, practice, and informed public policy, the School is dedicated to improving the lives of people of all ages, in every county in Maine and every state in the nation.

*This report is available on the Justice Policy Program Website:
<http://muskie.usm.maine.edu/justiceresearch>*