



OXFORD COUNTY

Justice Data

USM Muskie School of Public Service
Maine Statistical Analysis Center



Oxford County Facts

- *Oxford County, incorporated in 1805, is located on the western edge of Maine and borders New Hampshire and Canada.*
- *The county seat is in South Paris. The towns of this region are mostly small and rural. Rumford is the largest city in Oxford County.*
- *4% of Maine's total population resides in Oxford County.*
- *In 2007, the juvenile population of Oxford County was estimated at 11,816¹.*

Population by Gender and Age, 2007 ²			
Gender/Age Group	Number	Percent of Total	
		Oxford	Maine
Total	56,486	100.0%	100.0%
Male	27,382	48.5%	48.8%
Female	29,104	51.5%	51.2%
Under 14	9,443	16.7%	17.3%
15 to 24	6,770	12.0%	12.9%
25 to 34	6,477	11.4%	11.3%
35 to 44	8,010	14.2%	14.7%
45 to 54	9,680	17.1%	16.5%
55 to 64	7,238	12.8%	12.6%
65 to 74	4,593	8.1%	7.5%
75 to 84	3,115	5.5%	5.3%
85+	1,190	2.1%	1.9%
Median Age	-	42	41

¹OJJDP Statistical Briefing Book

²Maine Department of Labor, 2007

Demographic Facts³

- Population growth in Oxford County (3.6% increase from 2000 to 2008) has been close to the statewide rate (3.3% increase from 2000 to 2008).
- The population is slightly older than the statewide average.
 - Persons under 18 account for 20.8% of Oxford County's population compared with the statewide average of 21.2%.
- Educational attainment is lower than the statewide average.
 - 82.4% of those ages 25+ in Oxford County have graduated from high school compared with the statewide average of 85.4%.
 - 15.7% of those ages 25+ in Oxford County have obtained a bachelor's degree or higher compared with the statewide average of 22.9%.
- Most income measures are lower and poverty is higher than average.
 - The median household income in Oxford County is \$38,359 compared with a statewide average of \$45,832.
 - 14.4% of Oxford County residents live below the poverty line compared with a statewide average of 12.2%.
- Population density: 27 people per square mile
- Largest cities (population): Rumford (6,350), Paris (4,969), Norway (4,765)

³ Ibid.

Adult Criminal Justice Highlights

OXFORD COUNTY HAS SEEN AN INCREASE IN ADULT ARRESTS AND VIOLENT CRIMES OVER THE PAST 10 YEARS.

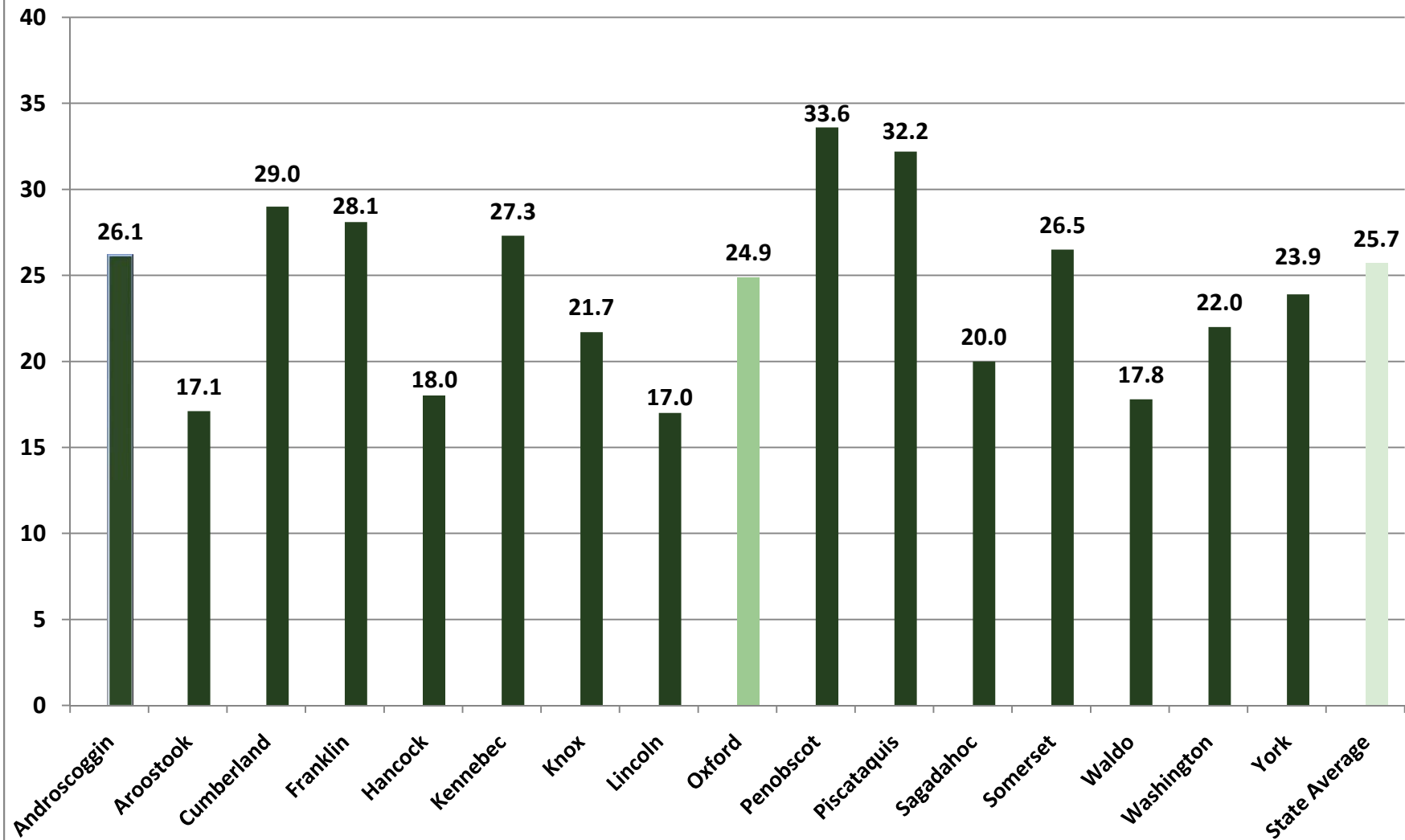
- The adult arrest rate increased by 15.2% over the last 5 years and increased by 33.6% over the last 10 years.
- In 2007, Oxford County had an index crime rate of 24.9 per 1,000 residents. This is comparable to the statewide average of 25.7 per 1,000 residents.
- Index crimes increased by 26.1% over the last 5 years, but have decreased by 12.3% from 10 years ago. However, violent crime showed a 133.3% increase over the same 10 year period.

Juvenile Justice Highlights

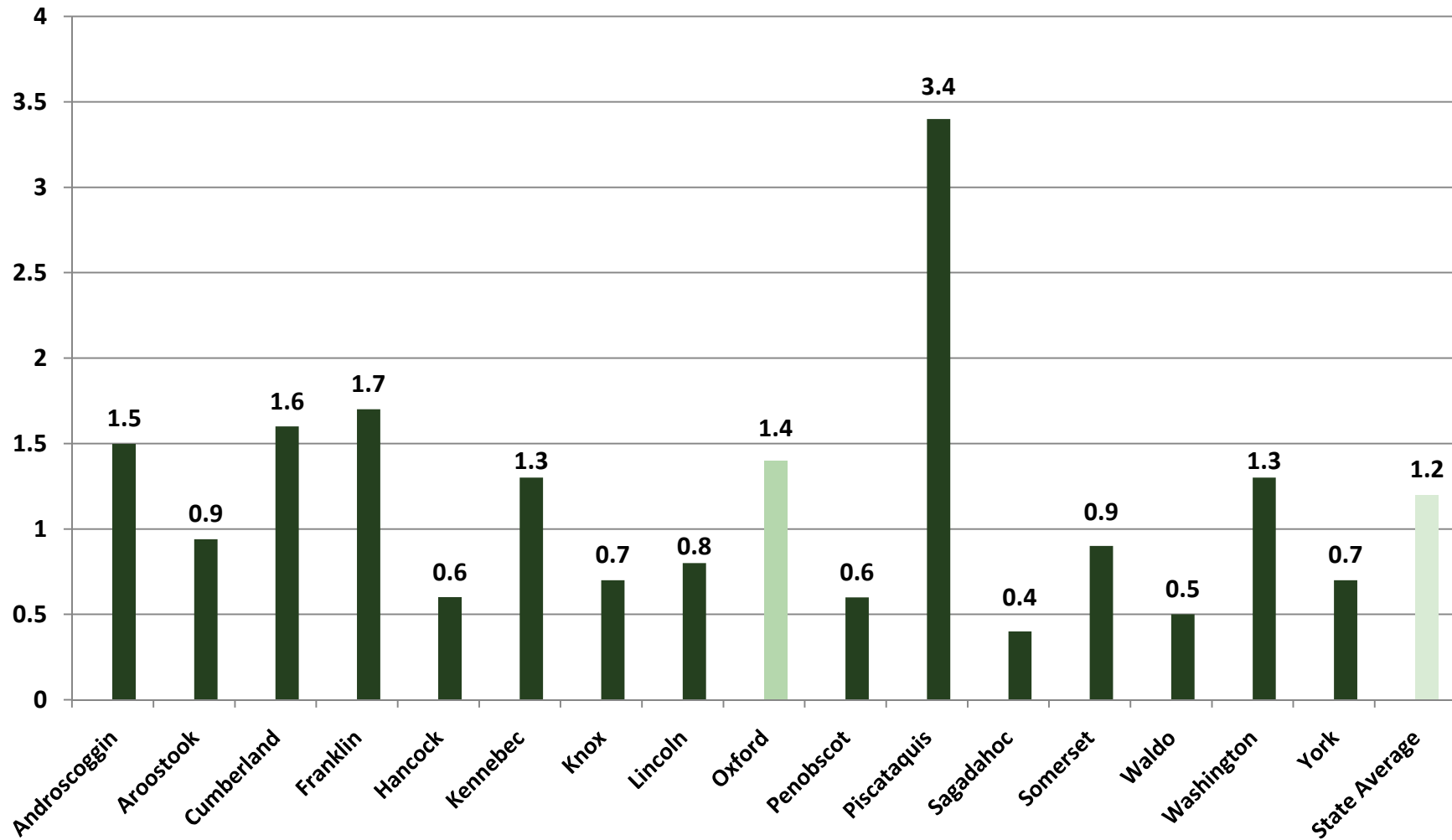
JUVENILE ARRESTS HAVE SHOWN A DECLINE OVER THE PAST 10 YEARS AND OXFORD COUNTY HAD THE LOWEST RATE OF FIRST TIME JUVENILE ADJUDICATIONS IN 2005.

- The juvenile arrest rate has declined by 47.7% over the last 5 years and decreased by 49.2% over the last 10 years.
- In 2005, the rate of juveniles adjudicated for the first time was 3.1 per 1,000 residents. This was a 39% decline from the previous year, and the lowest first time juvenile adjudication rate in the state. The statewide average was 8.4 per 1,000 residents in 2005.
- In 2005, the juvenile recidivism rate was 24%. This was below the statewide average of 27%.

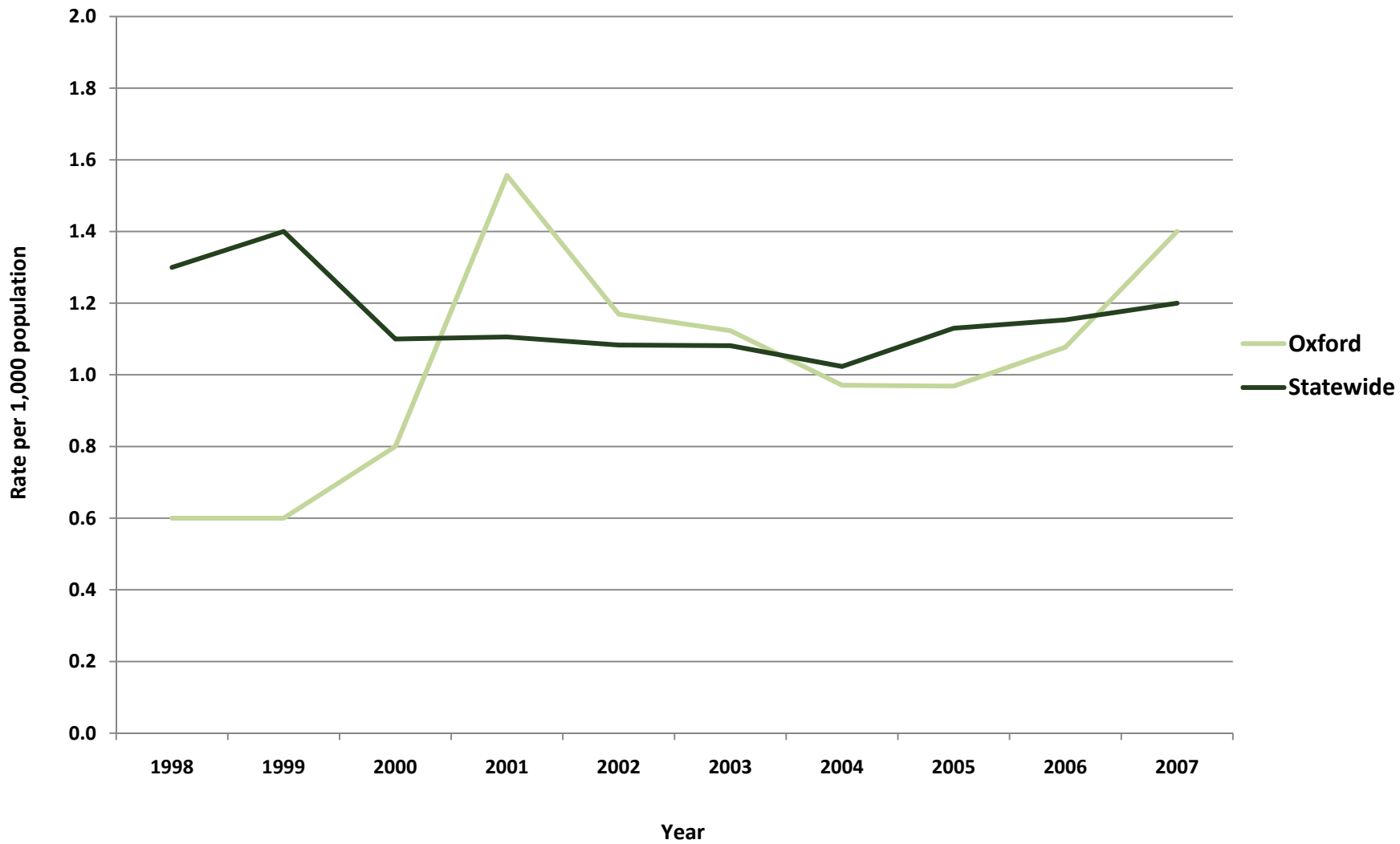
Index Crimes per 1,000 Residents, County Comparisons, 2007 (Total Population)



Violent Crimes per 1,000 Residents, County Comparisons, 2007 (Total Population)

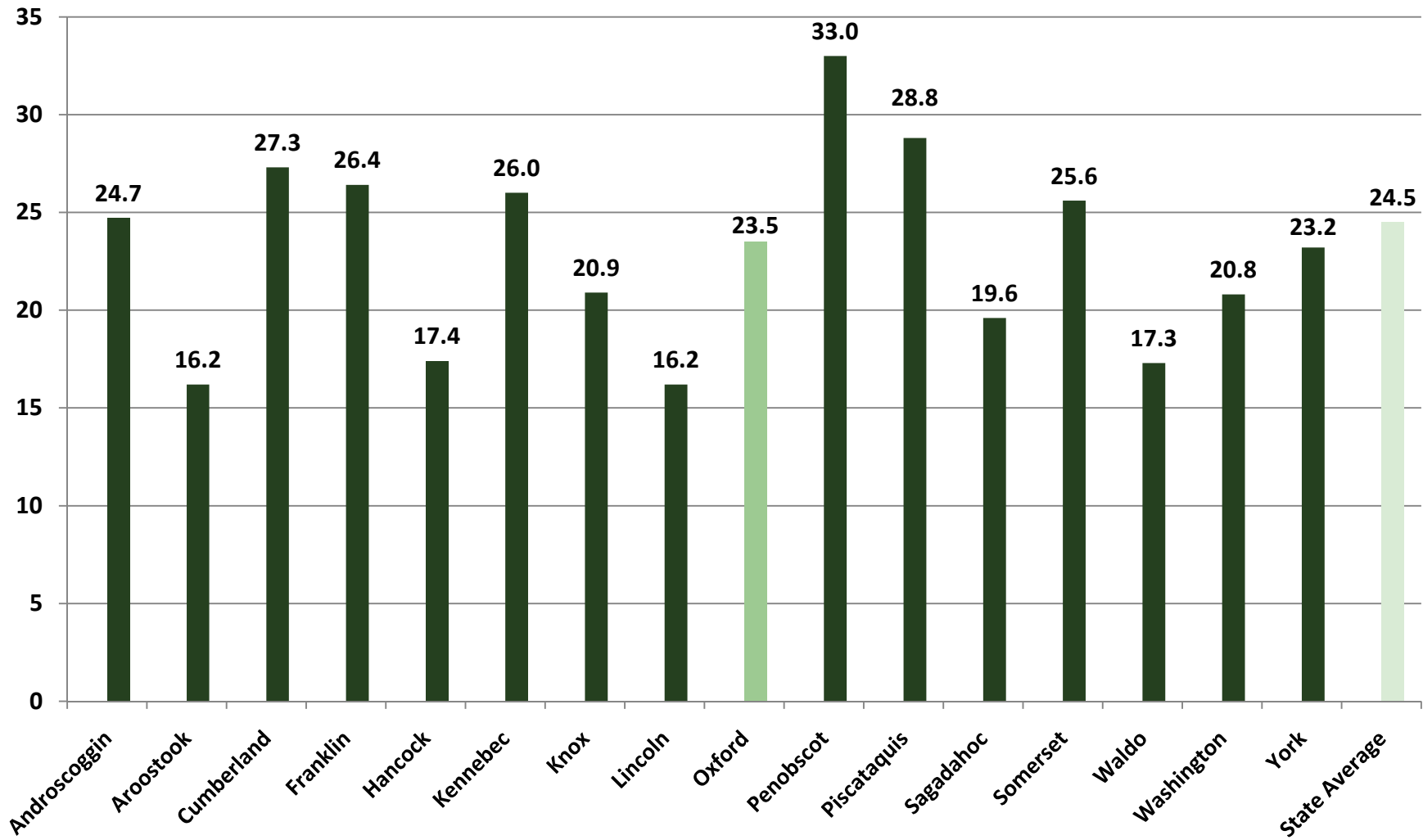


Oxford - Violent Crimes per 1,000 Residents (Total Population)

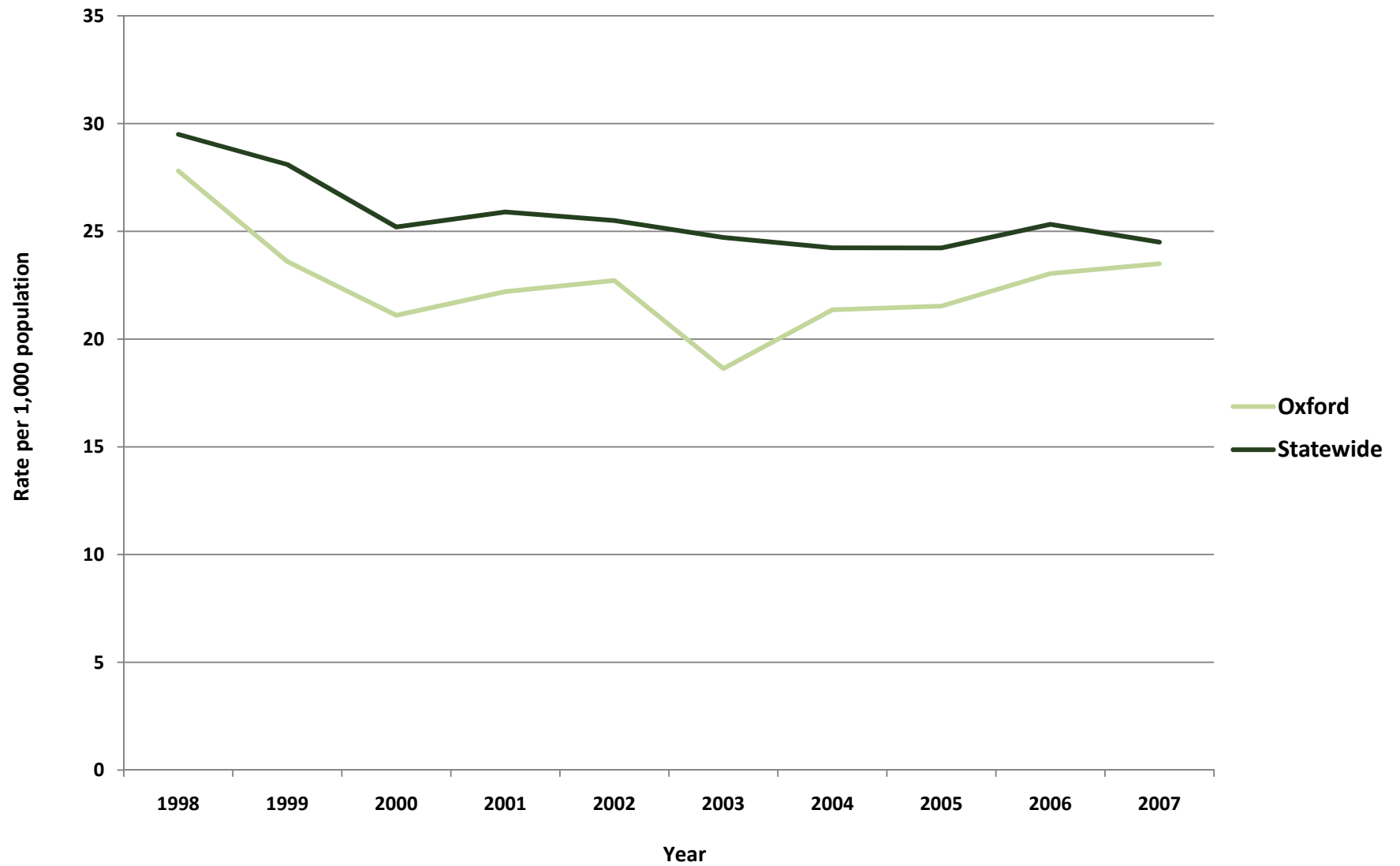


Property Crimes per 1,000 Residents, County Comparisons, 2007

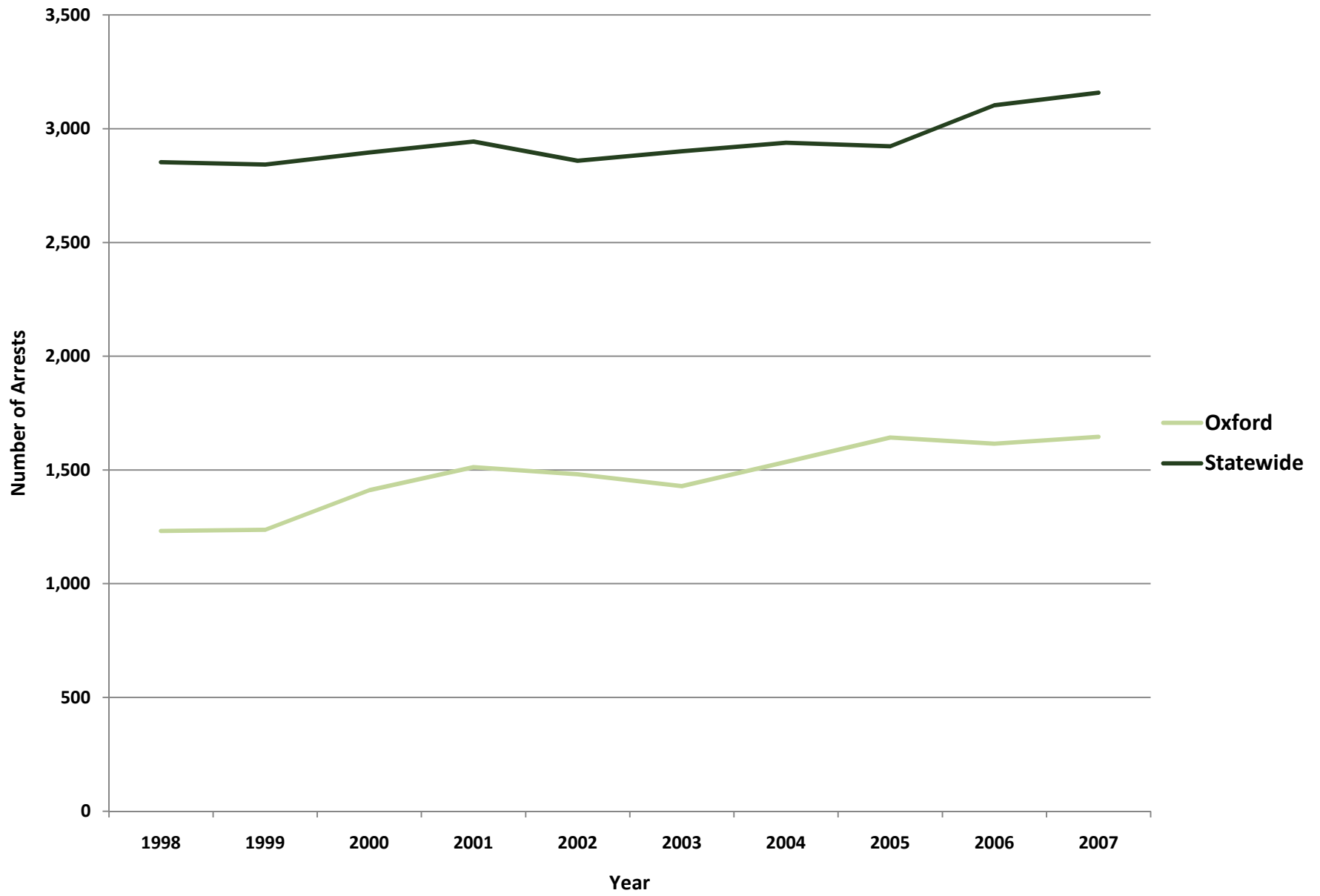
(Total Population)



Oxford - Property Crimes per 1,000 Residents (Total Population)



Oxford - Adult Arrests vs. Statewide Average



Oxford - Adult Crime Statistics (2007)			
	Overall	Male	Female
Adult Arrests 2007	1,646	1,294	352
5-Year % Change	15.2%	11.1%	33.3%
10-Year % Change	33.6%	26.0%	71.7%
Crime Rates (2007)			
Index Crimes 2007 (per 1,000 pop.)	24.9	Crime Rates are calculated using both Adult & Juvenile Arrests	
5-Year % Change	26.1%		
10-Year % Change	-12.3%		
Violent crimes 2007 (per 1,000 pop.)	1.4		
5-Year % Change	24.6%		
10-Year % Change	133.3%		
Property crimes 2007 (per 1,000 pop.)	23.5		
5-Year % Change	26.1%		
10-Year % Change	-15.5%		
Adult Arrests by Type (2007)			
	Adult Overall	Adult Male	Adult Female
Murder & Non-negligent Manslaughter	0	0	0
Manslaughter by Negligence	0	0	0
Forcible Rape	5	5	0
Robbery	3	3	0
Aggravated Assault	14	9	5
Burglary, Breaking & Entering	20	18	2
Larceny-Theft (except Auto Theft)	69	48	21
Motor Vehicle Theft	10	9	1
Other Assaults	241	182	59
Arson	2	2	0
Forgery & Counterfeiting	6	2	4
Fraud	4	2	2
Embezzlement	1	0	1
Stolen Property: Buying, Receiving, Possessing	3	3	0
Vandalism	20	16	4
Weapons: Carrying, Possessing, etc.	5	5	0
Prostitution & Commercialized Vice	1	0	1
Sex Offenses	9	9	0
Drug Abuse Violations	105	74	31
Gambling	0	0	0
Offenses Against Family & Children	4	2	2
Driving Under the Influence	319	251	68
Liquor Laws	137	105	32
Drunkenness	1	0	1
Disorderly Conduct	99	74	25
All Other Offenses (Except Traffic)	557	464	93
Total	1,646	1,294	352

Oxford- Juvenile Crime Statistics (2007)			
	Overall	Male	Female
Juvenile Arrests 2007	182	141	41
5-year % change Juvenile arrests	-37.7%	-35.9%	-43.1%
10-year % change Juvenile arrests	-49.2%	-48.9%	-50.0%
Juvenile Justice System Outcomes			
	Rate	Number	
Referrals	34.62 per 1,000 population	204	
Diversions	70.10 per 100 referrals	143	
Adjudications	61.54 per 100 petitions	56	
Juvenile Arrests by Type (2007)			
	Juvenile Overall	Juvenile Male	Juvenile Female
Murder & Non-negligent Manslaughter	0	0	0
Manslaughter by Negligence	0	0	0
Forcible Rape	1	1	0
Robbery	0	0	0
Aggravated Assault	1	0	1
Burglary, Breaking & Entering	14	10	4
Larceny-Theft (except Auto Theft)	32	25	7
Motor Vehicle Theft	4	3	1
Other Assaults	24	19	5
Arson	1	1	0
Forgery & Counterfeiting	0	0	0
Fraud	0	0	0
Embezzlement	0	0	0
Stolen Property: Buying, Receiving, Possessing	0	0	0
Vandalism	8	7	1
Weapons: Carrying, Possessing, etc.	4	4	0
Prostitution & Commercialized Vice	0	0	0
Sex Offenses	3	3	0
Drug Abuse Violations	13	8	5
Gambling	0	0	0
Offenses Against Family & Children	0	0	0
Driving Under the Influence	3	1	2
Liquor Laws	27	20	7
Drunkenness	0	0	0
Disorderly Conduct	5	4	1
All Other Offenses (Except Traffic)	42	35	7
Curfew & Loitering	0	0	0
Runaways	0	0	0
Total	182	141	41

Referral: Number of juveniles referred to the juvenile justice system.

Diversion: Number of juveniles formally diverted by a juvenile community corrections officer (JCCO).

Adjudication: Number of juveniles found guilty by a court of law.

ACKNOWLEDGEMENTS

Author

William Ethridge, Muskie School Public Policy & Management Graduate Student

Research Supervisor

Mark Rubin, Research Associate, Muskie School of Public Service

SAC Staff Contributor (Juvenile Statistics)

Becky Noreus, Research Analyst, Muskie School of Public Service

Editors

Carmen Dorsey, Director, Muskie School of Public Service Justice Policy Program

George Shaler, Research Associate, Muskie School of Public Service

Format and Design

Sheri Moulton, Project Assistant, Muskie School of Public Service

Special thanks to the Maine Statistical Analysis Center Advisory Group

Roxy Hennings, CQI Director, Division of Juvenile Services, Maine Department of Corrections

Denise Lord, Deputy Commissioner, Maine Department of Corrections

Janet Joyeux, Deputy Commissioner, Maine Department of Public Safety

Barry Stoodley, Associate Commissioner of Juvenile Services, Maine Department of Corrections

Paul Vestal, Chair, Maine Criminal Justice Commission

Sherry Wilkins, Court Management Analyst, Maine Administrative Office of the Courts

Attribution

The Maine County Profile Justice Data was created under the auspices of the State Justice Statistics Program, Bureau of Justice Statistics (BJS), Department of Justice (DOJ). Funding was provided by BJS Grant 2008-BJ-CX-K034. The opinions, findings, and conclusions expressed in this publication are those of the authors and do not necessarily reflect the view of the Department of Justice.

All data included in the criminal justice highlights and the corresponding charts and tables was derived from the [2008 Maine Crime and Justice Data Book](#) and the [Maine Department of Public Safety](#) and the [Maine Department of Corrections Juvenile Recidivism Report](#).

Updated: 12/09

ABOUT THE UNIVERSITY OF SOUTHERN MAINE (USM)
MUSKIE SCHOOL OF PUBLIC SERVICE

The USM Muskie School of Public Service educates leaders, informs public policy, and strengthens civic life through its graduate degree programs, research institutes and public outreach activities. By making the essential connection between research, practice, and informed public policy, the School is dedicated to improving the lives of people of all ages, in every county in Maine and every state in the nation.

This report is available on the Justice Policy Program Website:
<http://muskie.usm.maine.edu/justiceresearch>