



# PENOBSCOT COUNTY

Justice Data

**USM Muskie School of Public Service**  
Maine Statistical Analysis Center



## Penobscot County Facts

- *Penobscot was incorporated in 1816 and the county seat is Bangor.*
- *It is one of Maine's largest counties, covering over 3,250 square miles.*
- *Bangor is home to many business and cultural centers. Orono, also in Penobscot County, is home to the main campus of the University of Maine.*
- *11% of Maine's population resides in Penobscot County.*
- *In 2007, the juvenile population of Penobscot County was estimated at 30,561<sup>1</sup>.*

Population by Gender and Age, 2007 <sup>2</sup>			
Gender/Age Group	Number	Percent of Total	
		Penobscot	Maine
<b>Total</b>	<b>147,971</b>	<b>100.0%</b>	<b>100.0%</b>
Male	72,620	49.1%	48.8%
Female	75,351	50.9%	51.2%
Under 14	24,819	16.8%	17.3%
15 to 24	23,245	15.7%	12.9%
25 to 34	17,984	12.2%	11.3%
35 to 44	20,866	14.1%	14.7%
45 to 54	23,513	15.9%	16.5%
55 to 64	17,677	11.9%	12.6%
65 to 74	10,633	7.2%	7.5%
75 to 84	6,666	4.5%	5.3%
85+	2,568	1.7%	1.9%
<b>Median Age</b>	-	<b>39</b>	<b>41</b>

<sup>1</sup>OJDDP Statistical Briefing Book

<sup>2</sup>Maine Department of Labor, 2007

## Demographic Facts<sup>3</sup>

- Population growth in Penobscot County (2.6% increase from 2000 to 2008) has been below the statewide rate (3.3% increase from 2000 to 2008).
- The overall population is younger than the statewide average; however, the county has a smaller population under 18 than the statewide average.
  - Persons under 18 account for 20.5% of Penobscot County's population compared with the statewide average of 21.2%.
- Attainment of a high school diploma is higher than the statewide average, but college degree attainment is lower.
  - 85.7% of those ages 25+ in Penobscot County have graduated from high school compared with the statewide average of 85.4%.
  - 20.3% of those ages 25+ in Penobscot County have obtained a bachelor's degree or higher compared with the statewide average of 22.9%.
- Most income measures are lower and poverty is higher than average.
  - The median household income in Penobscot County is \$41,348 compared with a statewide average of \$45,832.
  - 13.5% of Penobscot County residents live below the poverty line compared with a statewide average of 12.2%.
- Population density: 33.7 people per square mile
- Largest cities (population): Bangor (31,853), Orono (9,704), Brewer (9,079)

---

<sup>3</sup> Ibid.

## Adult Criminal Justice Highlights

*THE ADULT ARREST RATE AND INDEX CRIME RATE HAVE REMAINED RELATIVELY STEADY IN PENOBSCOT COUNTY OVER THE PAST 10 YEARS. NONETHELESS, THE COUNTY HAS THE HIGHEST INDEX CRIME RATE IN THE STATE.*

- The adult arrest rate has remained steady, increasing only 2.5% over the last 5 years and increasing 4.6% over the last 10 years. However, the female adult arrest rate has grown rapidly compared to the male arrest rate, increasing 34.8% over 5 years and increasing 16.2% over 10 years. Conversely, the male arrest rate registered slight overall declines over those same time periods.
- In 2007, Penobscot County had the highest index crime rate in the state at 33.6 per 1,000 residents. The statewide average is 25.7 per 1,000 residents.
- The index crime rate has remained relatively steady over the past few years, increasing 8.3% over the last 5 years and only increasing 2.1% over the last 10 years. The violent crime rate showed a fairly pronounced decline, decreasing 18.2% over the last 5 years and decreasing by 40% over the last 10 years.

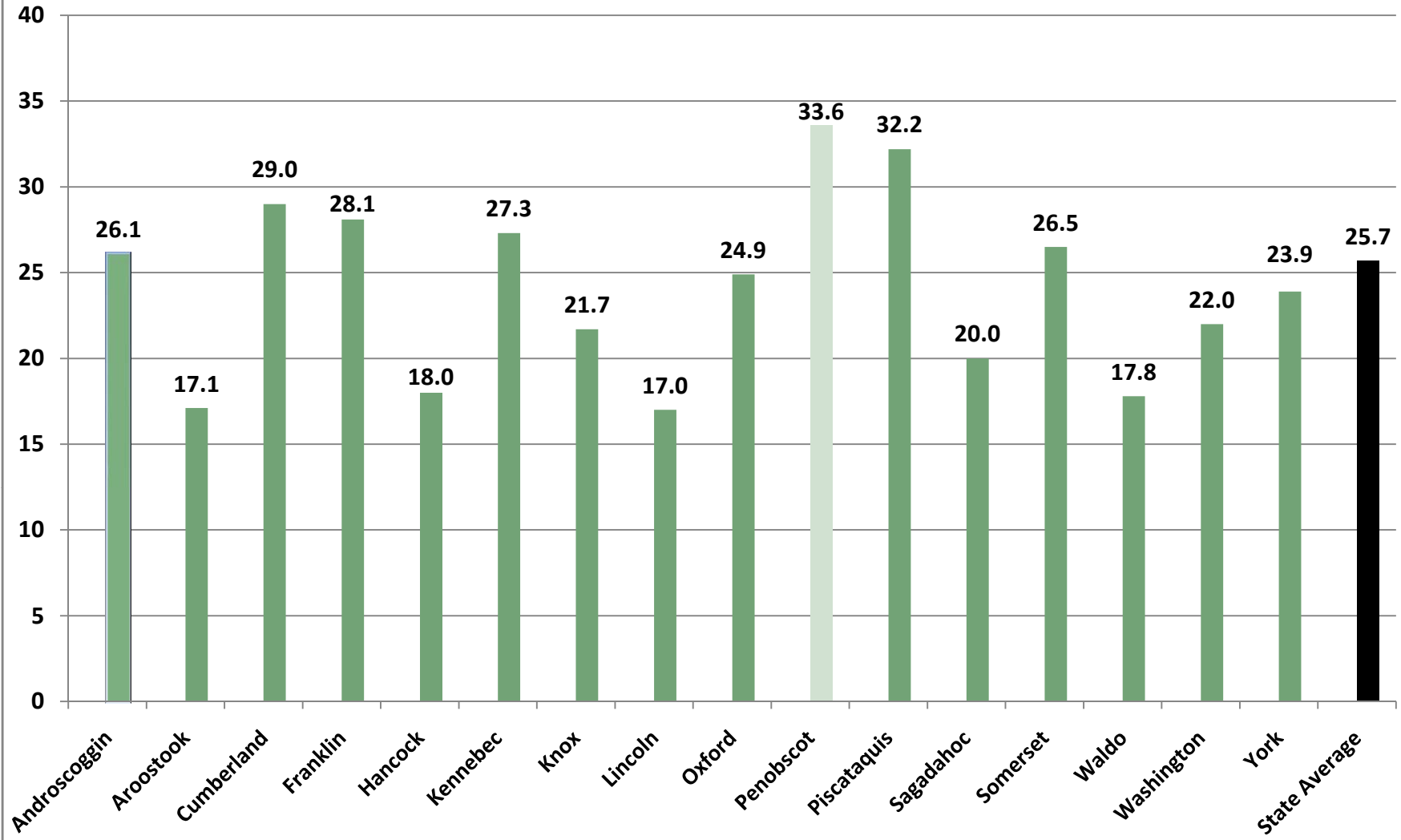
## Juvenile Justice Highlights

*JUVENILE ARRESTS HAVE DECLINED OVER THE PAST 10 YEARS IN PENOBSCOT COUNTY. HOWEVER, IN 2005, THE COUNTY REPORTED A RELATIVELY HIGH NUMBER OF FIRST TIME JUVENILE ADJUDICATIONS COMPARED TO THE STATEWIDE AVERAGE.*

- The juvenile arrest rate has declined by 12.1% over the last 5 years and declined by 45.8% over the last 10 years.
- In 2005, the rate of juveniles adjudicated for the first time was 9.8 per 1,000 residents. This is greater than the statewide average of 8.4 per 1,000 residents.
- In 2005, the juvenile recidivism rate was 28%. This is comparable to the statewide average of 27% in 2005.

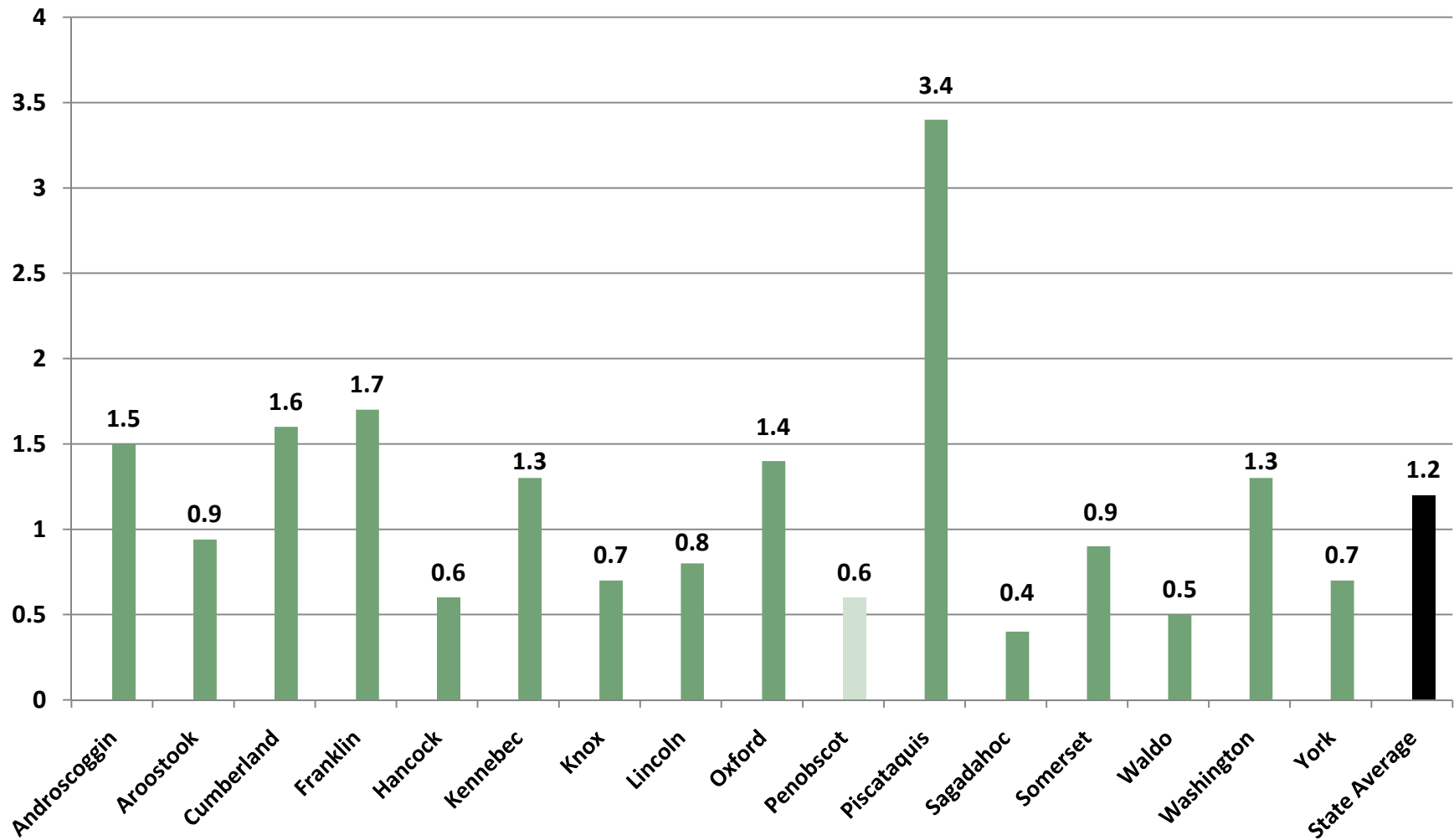
## Index Crimes per 1,000 Residents, County Comparisons, 2007

(Total Population)

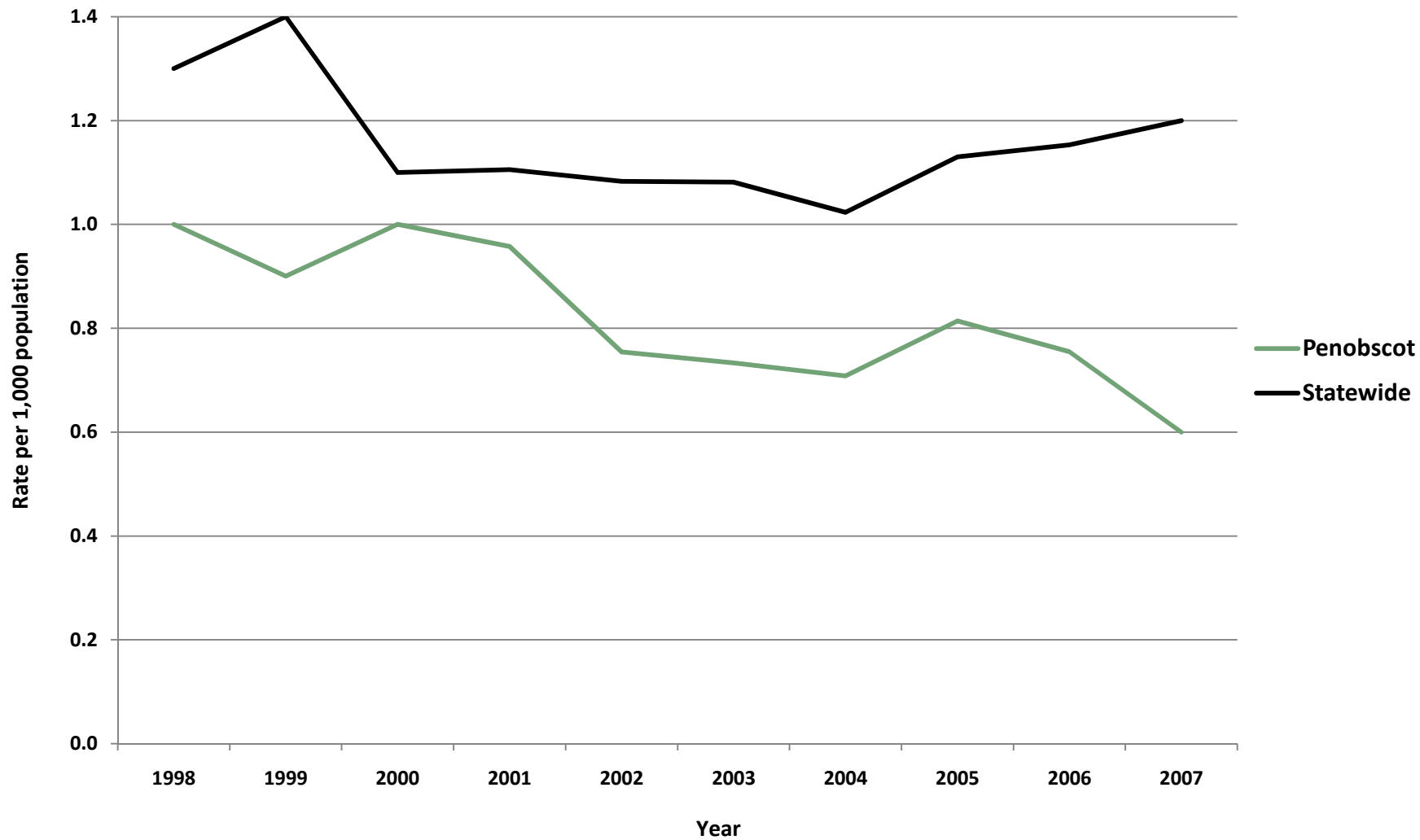


## Violent Crimes per 1,000 Residents, County Comparisons, 2007

(Total Population)

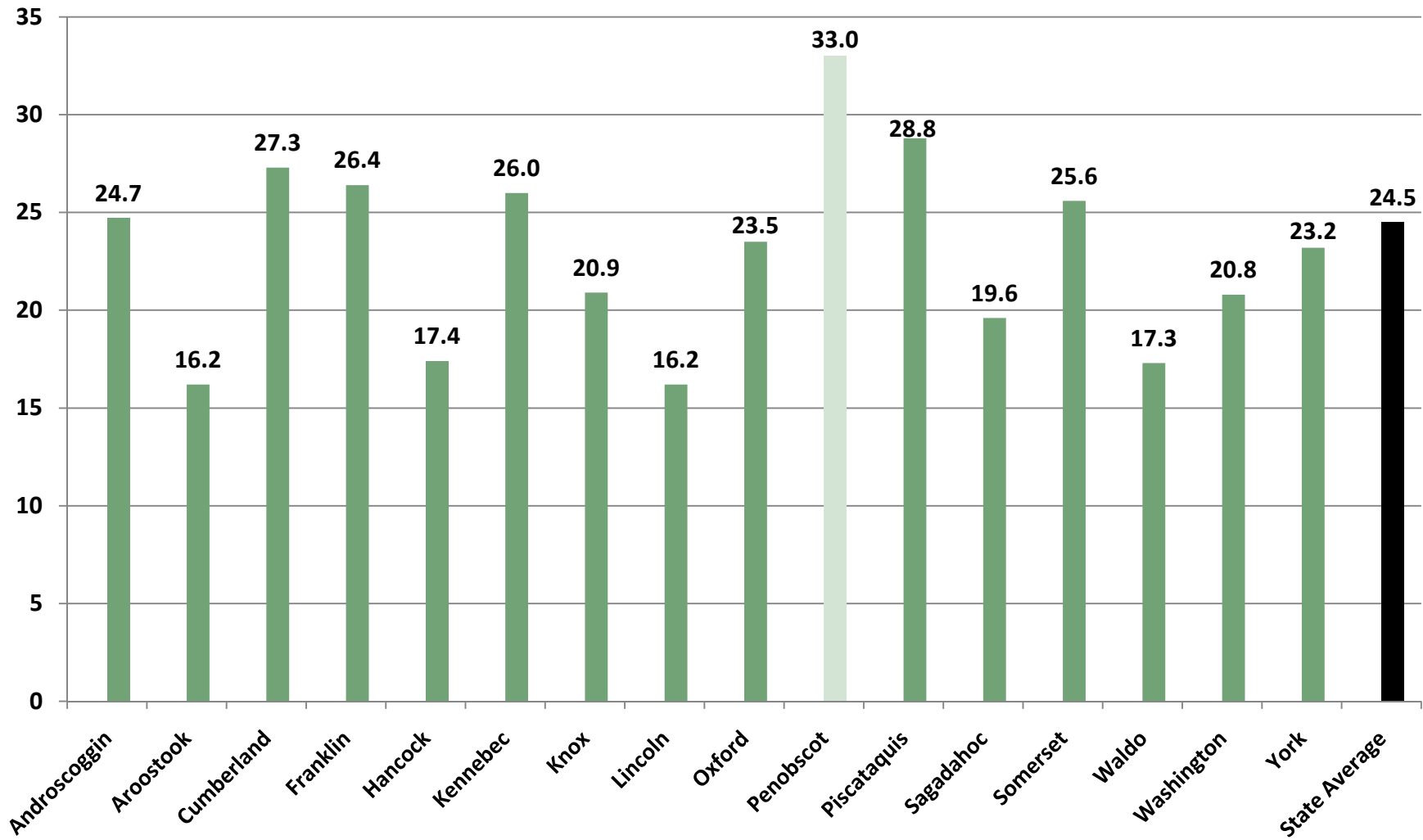


## Penobscot - Violent Crimes per 1,000 Residents (Total Population)



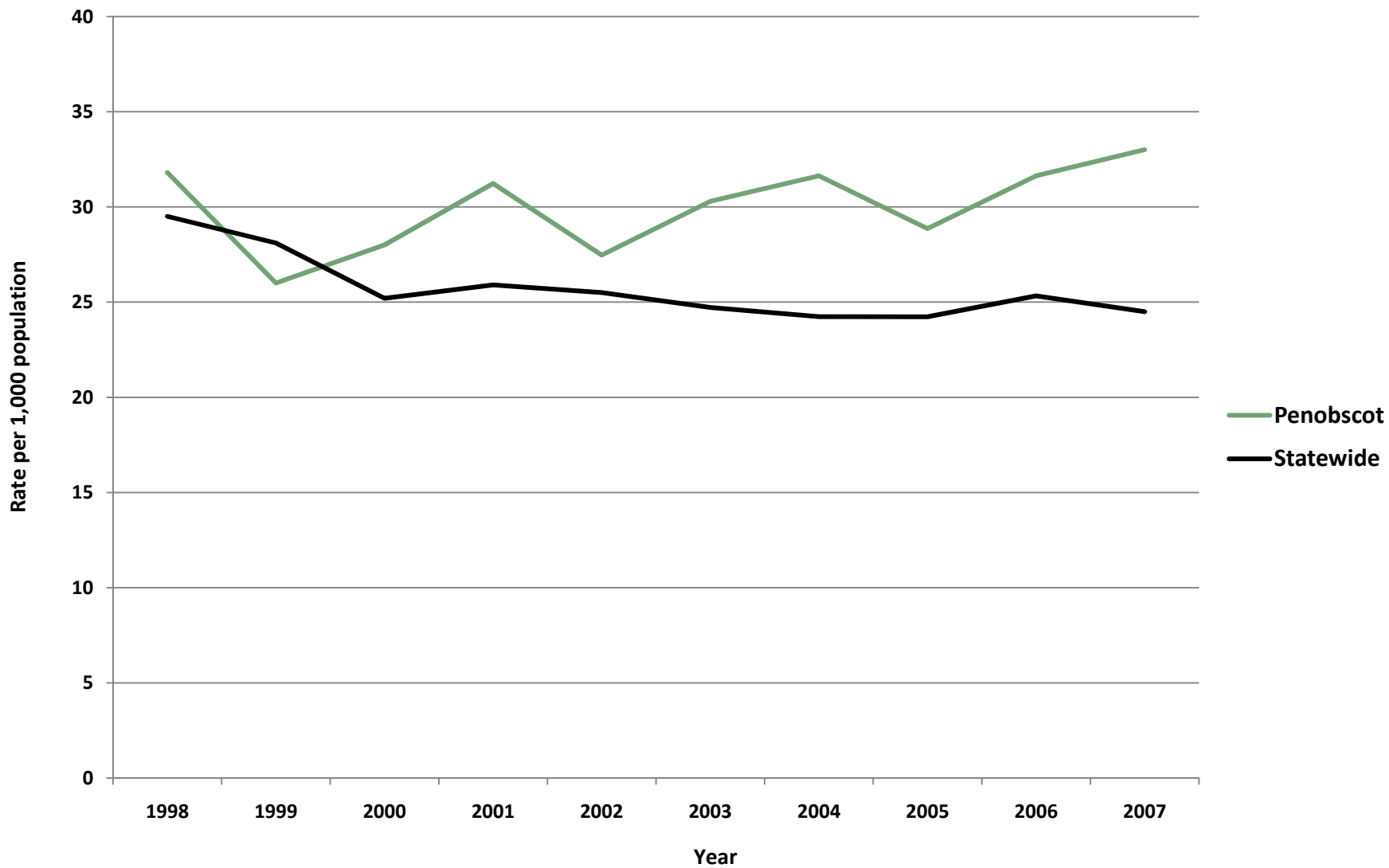
## Property Crimes per 1,000 Residents, County Comparisons, 2007

(Total Population)

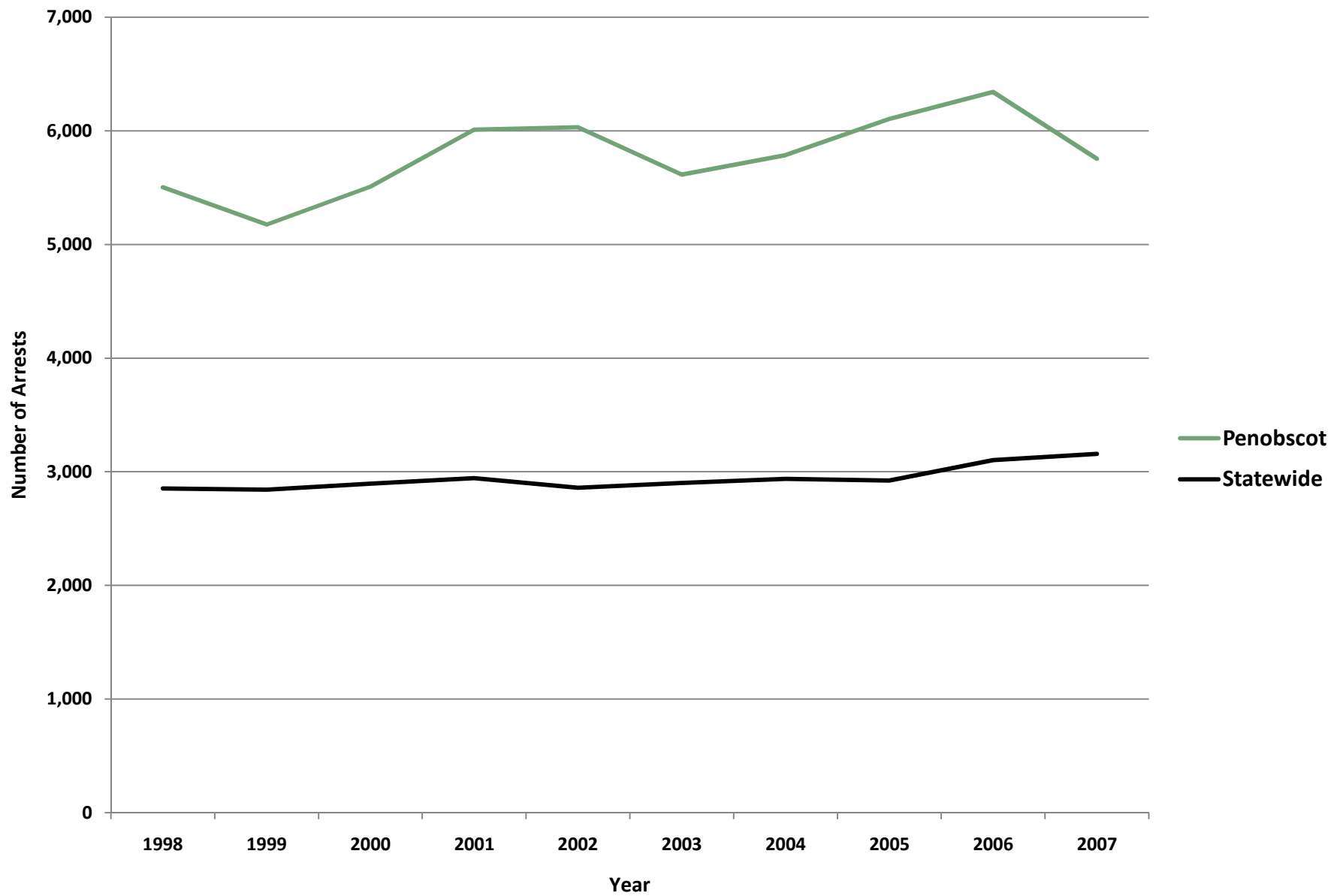




## Penobscot - Property Crimes per 1,000 Residents (Total Population)



## Penobscot - Adult Arrests vs. Statewide Average



<b>Penobscot - Adult Crime Statistics (2007)</b>			
	<b>Overall</b>	<b>Male</b>	<b>Female</b>
<b>Adult Arrests 2007</b>	5,755	4,252	1,503
5-Year % Change	2.5%	-3.1%	34.8%
10-Year % Change	4.6%	-1.6%	16.2%
<b>Crime Rates (2007)</b>			
<b>Index Crimes 2007 (per 1,000 pop.)</b>	33.6	<b>Crime Rates are calculated using both Adult &amp; Juvenile Arrests</b>	
5-Year % Change	8.3%		
10-Year % Change	2.1%		
<b>Violent crimes 2007 (per 1,000 pop.)</b>	0.6		
5-Year % Change	-18.2%		
10-Year % Change	-40.0%		
<b>Property crimes 2007 (per 1,000 pop.)</b>	33.0		
5-Year % Change	9.0%		
10-Year % Change	3.8%		
<b>Adult Arrests by Type (2007)</b>			
	<b>Adult Overall</b>	<b>Adult Male</b>	<b>Adult Female</b>
<a href="#">Murder &amp; Non-negligent Manslaughter</a>	3	3	0
<a href="#">Manslaughter by Negligence</a>	0	0	0
<a href="#">Forcible Rape</a>	5	4	1
<a href="#">Robbery</a>	17	16	1
<a href="#">Aggravated Assault</a>	21	13	8
<a href="#">Burglary, Breaking &amp; Entering</a>	118	104	14
<a href="#">Larceny-Theft (except Auto Theft)</a>	845	486	359
<a href="#">Motor Vehicle Theft</a>	18	17	1
<a href="#">Other Assaults</a>	706	553	153
<a href="#">Arson</a>	2	2	0
<a href="#">Forgery &amp; Counterfeiting</a>	69	44	25
<a href="#">Fraud</a>	135	89	46
<a href="#">Embezzlement</a>	2	2	0
<a href="#">Stolen Property: Buying, Receiving, Possessing</a>	43	30	13
<a href="#">Vandalism</a>	153	130	23
<a href="#">Weapons: Carrying, Possessing, etc.</a>	14	14	0
<a href="#">Prostitution &amp; Commercialized Vice</a>	2	2	0
<a href="#">Sex Offenses</a>	35	33	2
<a href="#">Drug Abuse Violations</a>	673	507	166
<a href="#">Gambling</a>	0	0	0
<a href="#">Offenses Against Family &amp; Children</a>	9	6	3
<a href="#">Driving Under the Influence</a>	825	628	197
<a href="#">Liquor Laws</a>	451	329	122
<a href="#">Drunkenness</a>	0	0	0
<a href="#">Disorderly Conduct</a>	185	140	45
<a href="#">All Other Offenses (Except Traffic)</a>	1,424	1,100	324
<b>Total</b>	<b>5,755</b>	<b>4,252</b>	<b>1,503</b>

Penobscot- Juvenile Crime Statistics (2007)			
	Overall	Male	Female
<b>Juvenile Arrests 2007</b>	727	505	222
5-year % change Juvenile arrests	-12.1%	-6.7%	-22.4%
10-year % change Juvenile arrests	-45.8%	-47.9%	-40.5%
Juvenile Justice System Outcomes			
	Rate	Number	
<a href="#">Referrals</a>	35.06 per 1,000 population	506	
<a href="#">Diversions</a>	55.14 per 100 referrals	279	
<a href="#">Adjudications</a>	82.84 per 100 petitions	251	
Juvenile Arrests by Type (2007)			
	Juvenile Overall	Juvenile Male	Juvenile Female
<a href="#">Murder &amp; Non-negligent Manslaughter</a>	0	0	0
<a href="#">Manslaughter by Negligence</a>	0	0	0
<a href="#">Forcible Rape</a>	0	0	0
<a href="#">Robbery</a>	2	2	0
<a href="#">Aggravated Assault</a>	1	0	1
<a href="#">Burglary, Breaking &amp; Entering</a>	30	29	1
<a href="#">Larceny-Theft (except Auto Theft)</a>	221	118	103
<a href="#">Motor Vehicle Theft</a>	4	4	0
<a href="#">Other Assaults</a>	43	27	16
<a href="#">Arson</a>	1	1	0
<a href="#">Forgery &amp; Counterfeiting</a>	1	1	0
<a href="#">Fraud</a>	2	1	1
<a href="#">Embezzlement</a>	0	0	0
<a href="#">Stolen Property: Buying, Receiving, Possessing</a>	12	10	2
<a href="#">Vandalism</a>	54	46	8
<a href="#">Weapons: Carrying, Possessing, etc.</a>	4	4	0
<a href="#">Prostitution &amp; Commercialized Vice</a>	0	0	0
<a href="#">Sex Offenses</a>	1	1	0
<a href="#">Drug Abuse Violations</a>	76	68	8
<a href="#">Gambling</a>	0	0	0
<a href="#">Offenses Against Family &amp; Children</a>	0	0	0
<a href="#">Driving Under the Influence</a>	7	7	0
<a href="#">Liquor Laws</a>	83	56	27
<a href="#">Drunkenness</a>	0	0	0
<a href="#">Disorderly Conduct</a>	16	12	4
<a href="#">All Other Offenses (Except Traffic)</a>	134	101	33
<a href="#">Curfew &amp; Loitering</a>	2	2	0
<a href="#">Runaways</a>	33	15	18
<b>Total</b>	<b>727</b>	<b>505</b>	<b>222</b>

**Referral:** Number of juveniles referred to the juvenile justice system.

**Diversion:** Number of juveniles formally diverted by a juvenile community corrections officer (JCCO).

**Adjudication:** Number of juveniles found guilty by a court of law.

## ACKNOWLEDGEMENTS

### ***Author***

William Ethridge, Muskie School Public Policy & Management Graduate Student

### ***Research Supervisor***

Mark Rubin, Research Associate, Muskie School of Public Service

### ***SAC Staff Contributor (Juvenile Statistics)***

Becky Noreus, Research Analyst, Muskie School of Public Service

### ***Editors***

Carmen Dorsey, Director, Muskie School of Public Service Justice Policy Program

George Shaler, Research Associate, Muskie School of Public Service

### ***Format and Design***

Sheri Moulton, Project Assistant, Muskie School of Public Service

### ***Special thanks to the Maine Statistical Analysis Center Advisory Group***

Roxy Hennings, CQI Director, Division of Juvenile Services, Maine Department of Corrections

Denise Lord, Deputy Commissioner, Maine Department of Corrections

Janet Joyeux, Deputy Commissioner, Maine Department of Public Safety

Barry Stoodley, Associate Commissioner of Juvenile Services, Maine Department of Corrections

Paul Vestal, Chair, Maine Criminal Justice Commission

Sherry Wilkins, Court Management Analyst, Maine Administrative Office of the Courts

### ***Attribution***

The Maine County Profile Justice Data was created under the auspices of the State Justice Statistics Program, Bureau of Justice Statistics (BJS), Department of Justice (DOJ). Funding was provided by BJS Grant 2008-BJ-CX-K034. The opinions, findings, and conclusions expressed in this publication are those of the authors and do not necessarily reflect the view of the Department of Justice.

*All data included in the criminal justice highlights and the corresponding charts and tables was derived from the [2008 Maine Crime and Justice Data Book](#) and the [Maine Department of Public Safety](#) and the [Maine Department of Corrections Juvenile Recidivism Report](#).*

*Updated: 12/09*

ABOUT THE UNIVERSITY OF SOUTHERN MAINE (USM)  
MUSKIE SCHOOL OF PUBLIC SERVICE

The USM Muskie School of Public Service educates leaders, informs public policy, and strengthens civic life through its graduate degree programs, research institutes and public outreach activities. By making the essential connection between research, practice, and informed public policy, the School is dedicated to improving the lives of people of all ages, in every county in Maine and every state in the nation.

*This report is available on the Justice Policy Program Website:  
<http://muskie.usm.maine.edu/justiceresearch>*