



# SAGADAHOC COUNTY

Justice Data

**USM Muskie School of Public Service**  
Maine Statistical Analysis Center



## Sagadahoc County Facts

- *Sagadahoc County, incorporated in 1854, is located in what is known as the mid-coast region of Maine.*
- *Bath is the county's only city and home to the shipbuilding company Bath Iron Works, Maine's largest employer. Sagadahoc County is a popular county for visitors to Maine because of its coastline, antique shops and other attractions.*
- *3% of Maine's total population resides in Sagadahoc County.*
- *In 2007, the juvenile population of Sagadahoc County was estimated at 8,365<sup>1</sup>.*

Population by Gender and Age, 2007 <sup>2</sup>			
Gender/Age Group	Number	Percent of Total	
		Sagadahoc	Maine
<b>Total</b>	<b>36,402</b>	<b>100.0%</b>	<b>100.0%</b>
Male	17,734	48.7%	48.8%
Female	18,668	51.3%	51.2%
Under 14	6,811	18.7%	17.3%
15 to 24	4,231	11.6%	12.9%
25 to 34	4,021	11.0%	11.3%
35 to 44	5,440	14.9%	14.7%
45 to 54	6,233	17.1%	16.5%
55 to 64	4,627	12.7%	12.6%
65 to 74	2,821	7.7%	7.5%
75 to 84	1,727	4.7%	5.3%
85+	491	1.3%	1.9%
Median Age	-	41	41

<sup>1</sup>OJDDP Statistical Briefing Book

<sup>2</sup>Maine Department of Labor, 2007

## Demographic Facts<sup>3</sup>

- Population growth in Sagadahoc County (3.2% increase from 2000 to 2008) is near the statewide rate (3.3% increase from 2000 to 2008).
- The population is similar to the statewide average.
  - Persons under 18 account for 23.0% of Sagadahoc County's population compared with the statewide average of 21.2%.
- Educational attainment is higher than the statewide average.
  - 88.0% of those ages 25+ in Sagadahoc County have graduated from high school compared with the statewide average of 85.4%.
  - 25.0% of those ages 25+ in Sagadahoc County have obtained a bachelor's degree or higher compared with the statewide average of 22.9%.
- Most income measures are higher and poverty is lower than the statewide average.
  - The median household income in Sagadahoc County is \$52,375 compared with a statewide average of \$45,832.
  - 9.2% of Sagadahoc County residents live below the poverty line compared with a statewide average of 12.2%.
- Population density: 143 people per square mile
- Largest cities (population): Topsham (9,873), Bath (8,959), Richmond (3,407)

---

<sup>3</sup>Ibid.

## Adult Criminal Justice Highlights

*SAGADAHOC COUNTY HAS SEEN AN INCREASE IN ARRESTS OF ADULTS BUT A DECLINE IN INDEX CRIMES OVER THE PAST 10 YEARS.*

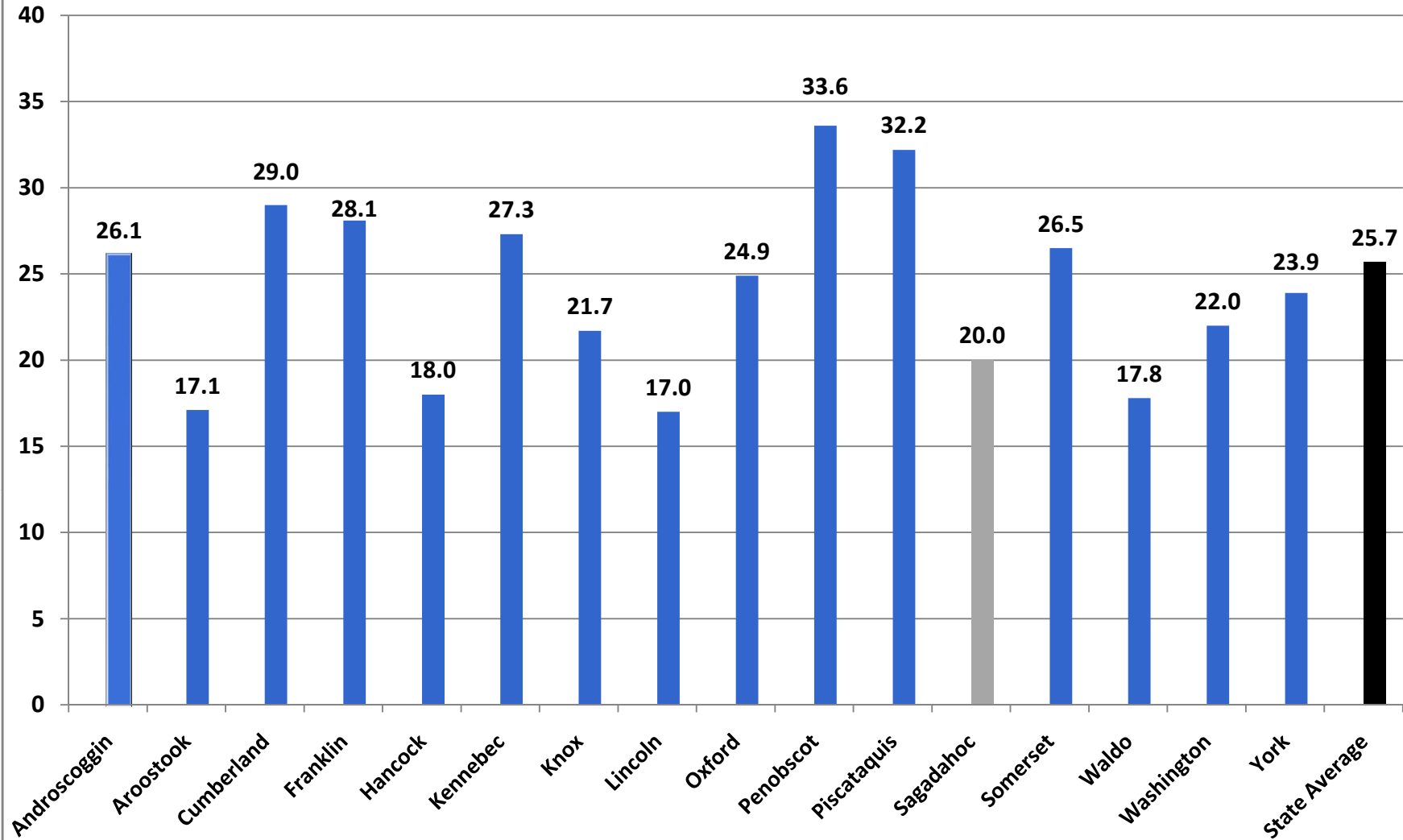
- The adult arrest rate increased by 16.5% over the last 5 years and increased by 48.6% over the last 10 years.
- In 2007, Sagadahoc County had an index crime rate of 20.0 per 1,000 residents. This is below the statewide average of 25.7 per 1,000 residents.
- Index crimes decreased by 7.5% over the last 5 years and decreased by 24% over the last 10 years. Violent and property crime rates showed similar declines.

## Juvenile Justice Highlights

*JUVENILE ARRESTS HAVE SHOWN A DECLINE OVER THE PAST 10 YEARS. IN 2005, SAGADAHOC COUNTY HAD THE HIGHEST JUVENILE FIRST TIME ADJUDICATION RATE, BUT THE LOWEST JUVENILE RECIDIVISM RATE IN THE STATE.*

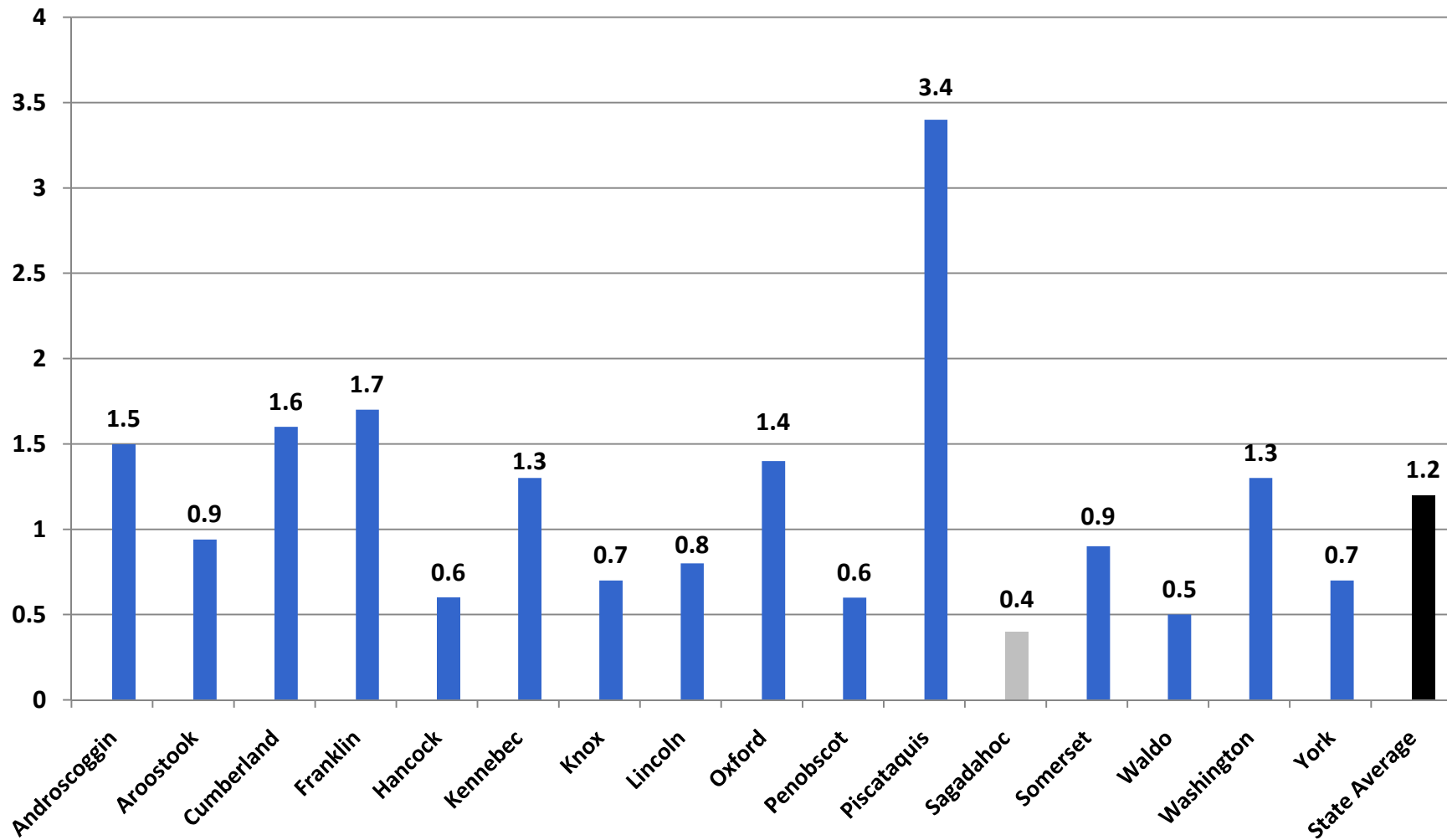
- The juvenile arrest rate has declined by 21.2% over the last 5 years and decreased by 27.8% over the last 10 years.
- In 2005, the rate of juveniles adjudicated for the first time was 14.0 per 1,000 residents. This was a 67% increase from the previous year, and was the highest first time juvenile adjudication rate in the state in 2005. The statewide average was 8.4 per 1,000 residents.
- In 2005, the juvenile recidivism rate in Sagadahoc County was 8%; along with Washington County, this was the lowest juvenile recidivism rate in the state in 2005. The statewide average in 2005 was 27%.

## Index Crimes per 1,000 Residents, County Comparisons, 2007 (Total Population)

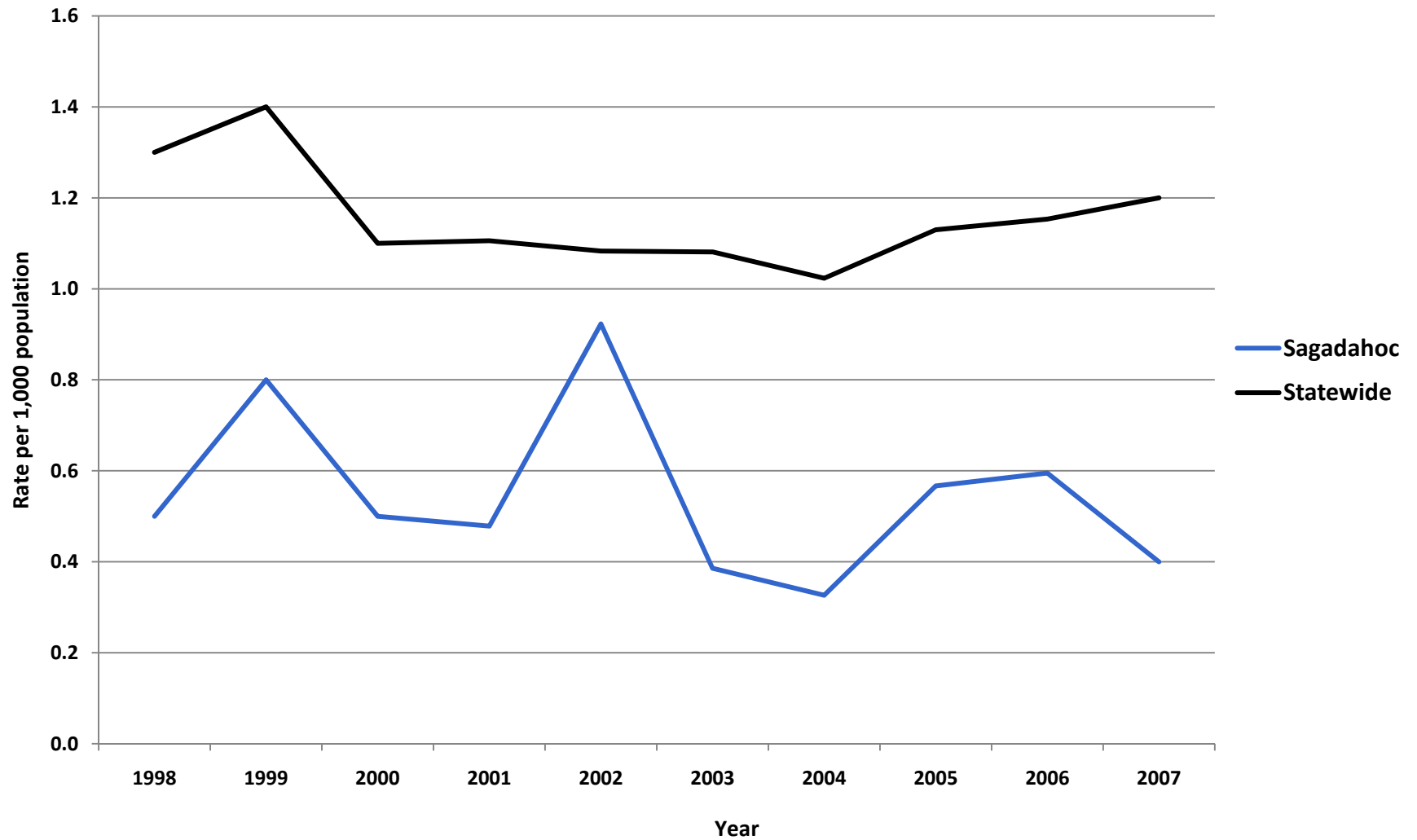


## Violent Crimes per 1,000 Residents, County Comparisons, 2007

(Total Population)

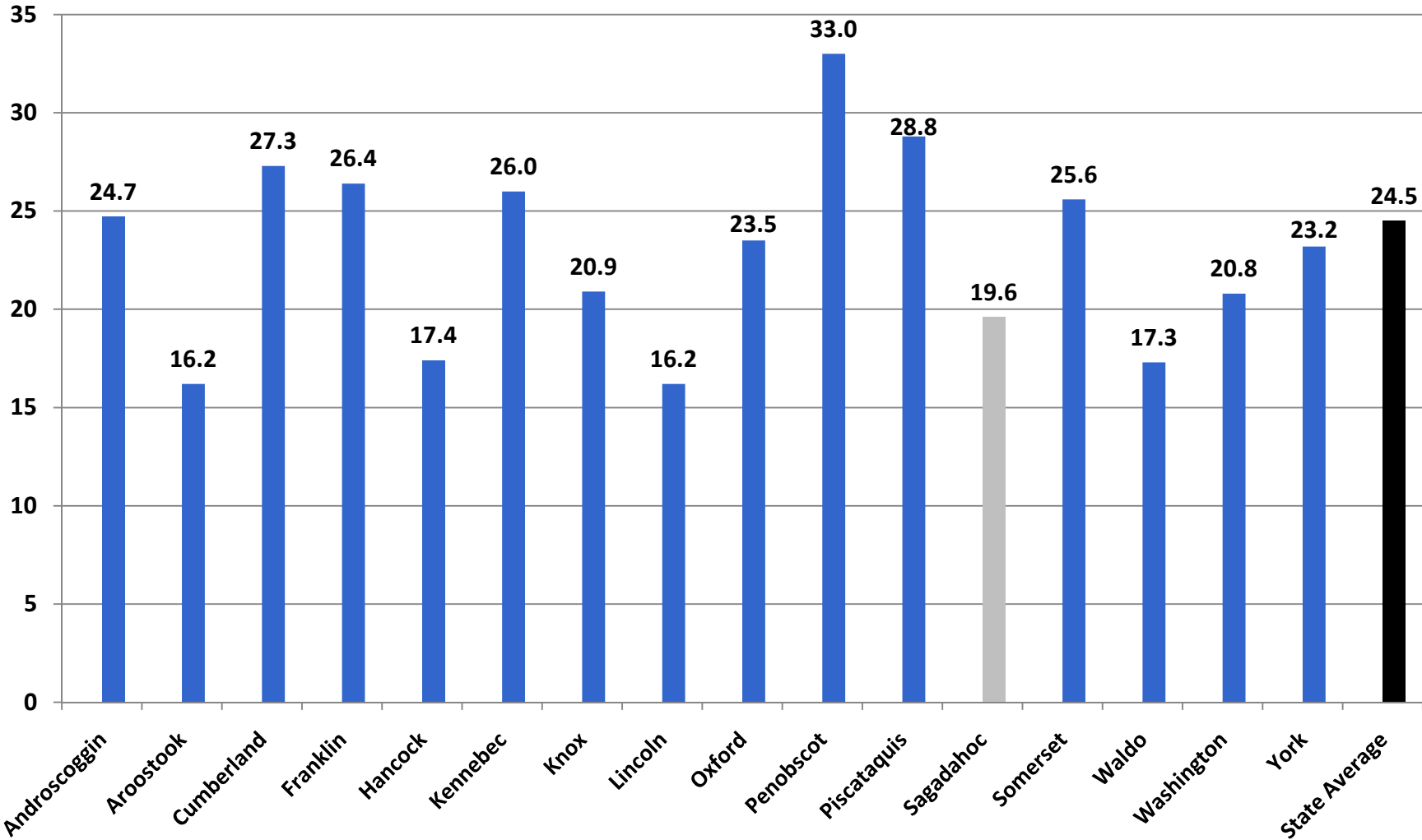


## Sagadahoc - Violent Crimes per 1,000 Residents (Total Population)



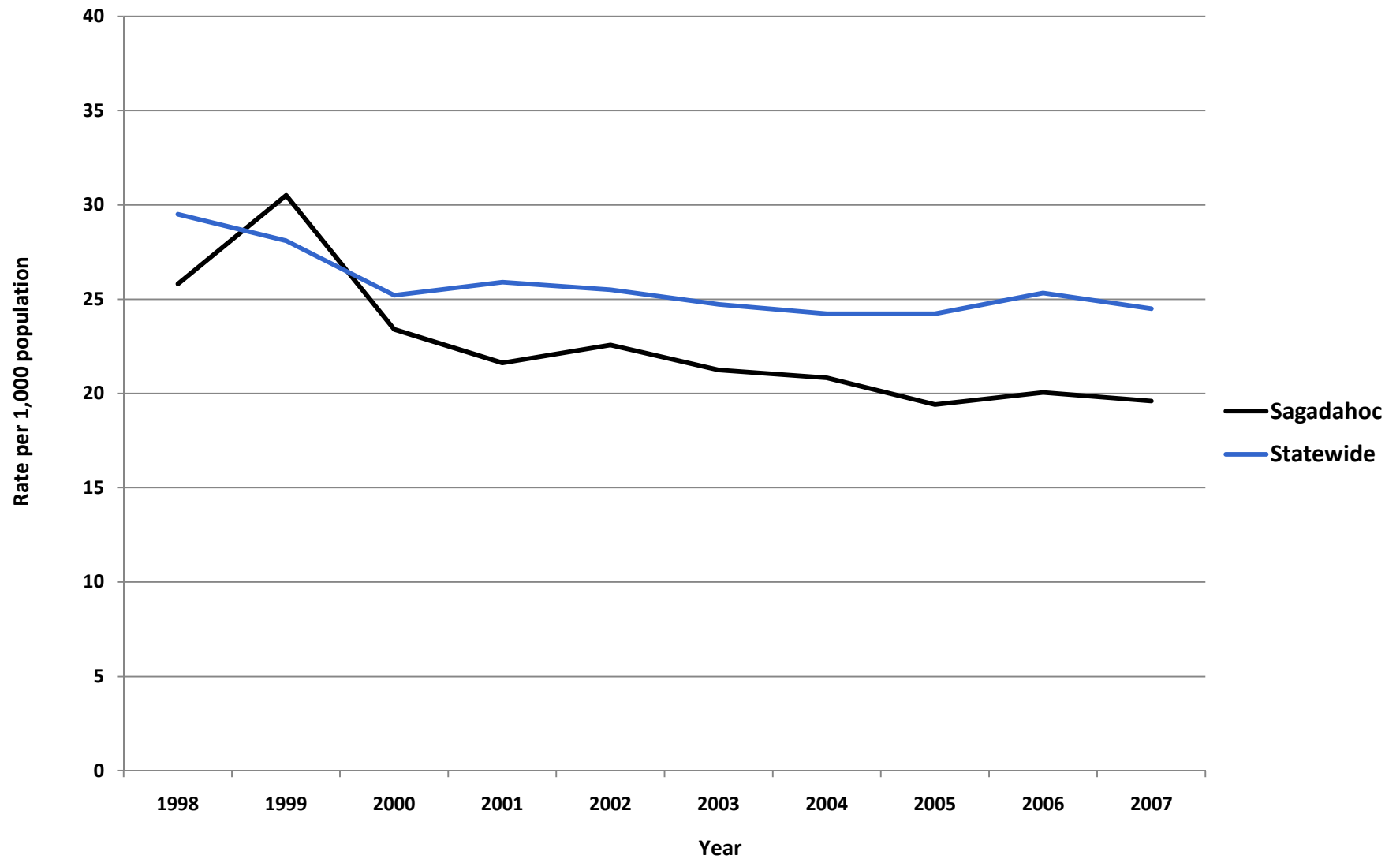
# Property Crimes per 1,000 Residents, County Comparisons, 2007

(Total Population)

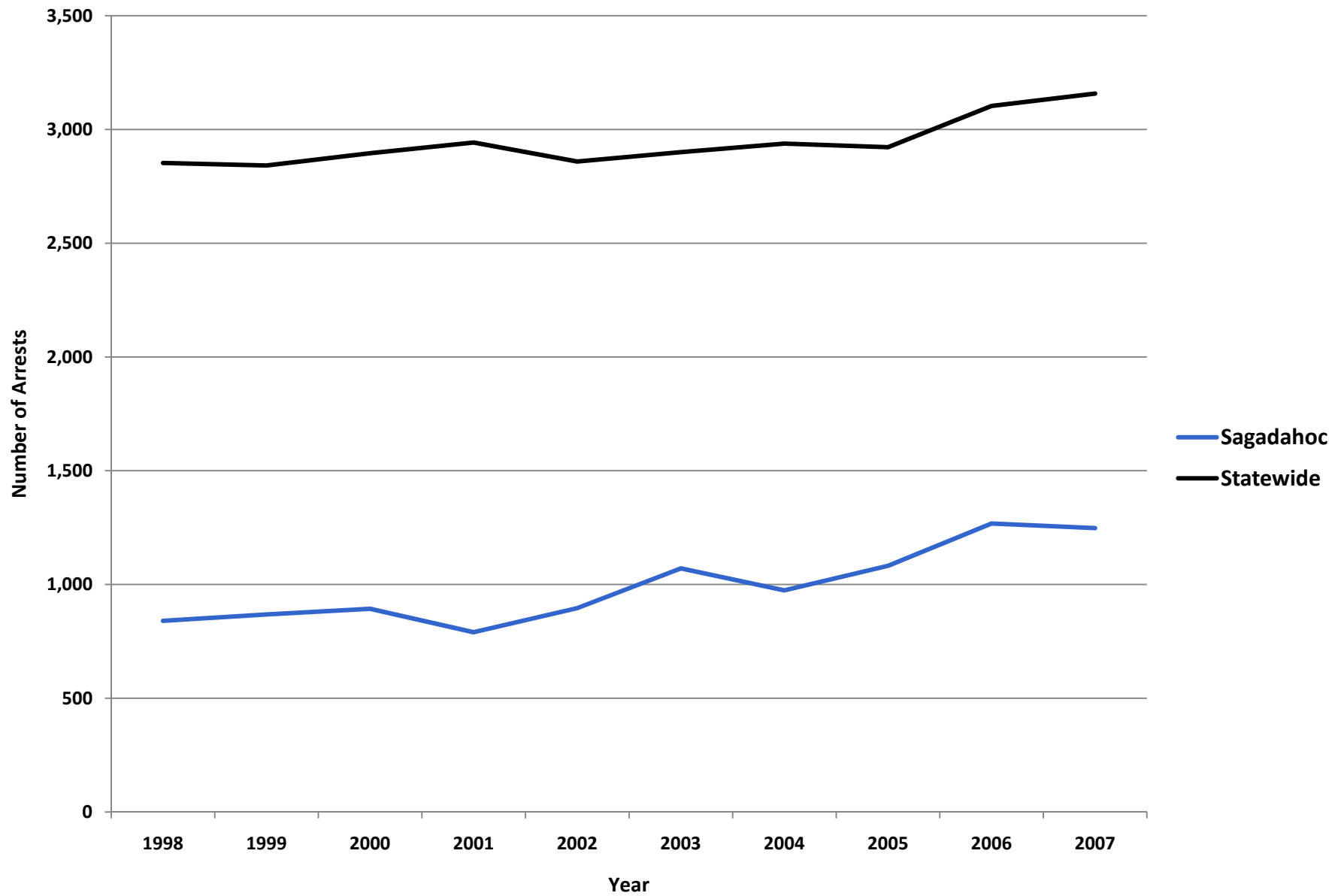




## Sagadahoc - Property Crimes per 1,000 Residents (Total Population)



## Sagadahoc - Adult Arrests vs. Statewide Average



<b>Sagadahoc - Adult Crime Statistics (2007)</b>			
	<b>Overall</b>	<b>Male</b>	<b>Female</b>
<b>Adult Arrests 2007</b>	1,248	950	298
5-Year % Change	16.5%	8.8%	50.5%
10-Year % Change	48.6%	36.7%	105.5%
<b>Crime Rates (2007)</b>			
<b>Index Crimes 2007 (per 1,000 pop.)</b>	20	<b>Crime Rates are calculated using both Adult &amp; Juvenile Arrests</b>	
5-Year % Change	-7.5%		
10-Year % Change	-24.0%		
<b>Violent crimes 2007 (per 1,000 pop.)</b>	0.4		
5-Year % Change	3.7%		
10-Year % Change	-20.0%		
<b>Property crimes 2007 (per 1,000 pop.)</b>	19.6		
5-Year % Change	-7.7%		
10-Year % Change	-24.0%		
<b>Adult Arrests by Type (2007)</b>			
	<b>Adult Overall</b>	<b>Adult Male</b>	<b>Adult Female</b>
<a href="#">Murder &amp; Non-negligent Manslaughter</a>	0	0	0
<a href="#">Manslaughter by Negligence</a>	0	0	0
<a href="#">Forcible Rape</a>	1	1	0
<a href="#">Robbery</a>	0	0	0
<a href="#">Aggravated Assault</a>	5	4	1
<a href="#">Burglary, Breaking &amp; Entering</a>	12	12	0
<a href="#">Larceny-Theft (except Auto Theft)</a>	46	25	21
<a href="#">Motor Vehicle Theft</a>	5	5	0
<a href="#">Other Assaults</a>	93	75	18
<a href="#">Arson</a>	0	0	0
<a href="#">Forgery &amp; Counterfeiting</a>	1	1	0
<a href="#">Fraud</a>	10	5	5
<a href="#">Embezzlement</a>	1	0	1
<a href="#">Stolen Property: Buying, Receiving, Possessing</a>	2	2	0
<a href="#">Vandalism</a>	19	16	3
<a href="#">Weapons: Carrying, Possessing, etc.</a>	6	6	0
<a href="#">Prostitution &amp; Commercialized Vice</a>	0	0	0
<a href="#">Sex Offenses</a>	9	9	0
<a href="#">Drug Abuse Violations</a>	160	125	35
<a href="#">Gambling</a>	0	0	0
<a href="#">Offenses Against Family &amp; Children</a>	7	3	4
<a href="#">Driving Under the Influence</a>	203	155	48
<a href="#">Liquor Laws</a>	59	42	17
<a href="#">Drunkenness</a>	0	0	0
<a href="#">Disorderly Conduct</a>	23	19	4
<a href="#">All Other Offenses (Except Traffic)</a>	586	445	141
<b>Total</b>	<b>1,248</b>	<b>950</b>	<b>298</b>

Sagadahoc- Juvenile Crime Statistics (2007)			
	Overall	Male	Female
<b>Juvenile Arrests 2007</b>	190	146	44
5-year % change Juvenile arrests	-21.2%	-18.9%	-27.9%
10-year % change Juvenile arrests	-27.8%	-30.8%	-15.4%
Juvenile Justice System Outcomes			
	Rate	Number	
<a href="#">Referrals</a>	30.61 per 1,000 population	125	
<a href="#">Diversions</a>	31.20 per 100 referrals	39	
<a href="#">Adjudications</a>	104.17 per 100 petitions	75	
Juvenile Arrests by Type (2007)			
	Juvenile Overall	Juvenile Male	Juvenile Female
<a href="#">Murder &amp; Non-negligent Manslaughter</a>	0	0	0
<a href="#">Manslaughter by Negligence</a>	0	0	0
<a href="#">Forcible Rape</a>	0	0	0
<a href="#">Robbery</a>	1	1	0
<a href="#">Aggravated Assault</a>	0	0	0
<a href="#">Burglary, Breaking &amp; Entering</a>	10	10	0
<a href="#">Larceny-Theft (except Auto Theft)</a>	33	25	8
<a href="#">Motor Vehicle Theft</a>	0	0	0
<a href="#">Other Assaults</a>	14	9	5
<a href="#">Arson</a>	0	0	0
<a href="#">Forgery &amp; Counterfeiting</a>	0	0	0
<a href="#">Fraud</a>	1	1	0
<a href="#">Embezzlement</a>	0	0	0
<a href="#">Stolen Property: Buying, Receiving, Possessing</a>	4	1	3
<a href="#">Vandalism</a>	8	4	4
<a href="#">Weapons: Carrying, Possessing, etc.</a>	1	1	0
<a href="#">Prostitution &amp; Commercialized Vice</a>	0	0	0
<a href="#">Sex Offenses</a>	1	1	0
<a href="#">Drug Abuse Violations</a>	15	14	1
<a href="#">Gambling</a>	0	0	0
<a href="#">Offenses Against Family &amp; Children</a>	0	0	0
<a href="#">Driving Under the Influence</a>	0	0	0
<a href="#">Liquor Laws</a>	36	31	5
<a href="#">Drunkenness</a>	0	0	0
<a href="#">Disorderly Conduct</a>	4	3	1
<a href="#">All Other Offenses (Except Traffic)</a>	62	45	17
<a href="#">Curfew &amp; Loitering</a>	0	0	0
<a href="#">Runaways</a>	0	0	0
<b>Total</b>	<b>190</b>	<b>146</b>	<b>44</b>

**Referral:** Number of juveniles referred to the juvenile justice system.

**Diversion:** Number of juveniles formally diverted by a juvenile community corrections officer (JCCO).

**Adjudication:** Number of juveniles found guilty by a court of law.

## ACKNOWLEDGEMENTS

### ***Author***

William Ethridge, Muskie School Public Policy & Management Graduate Student

### ***Research Supervisor***

Mark Rubin, Research Associate, Muskie School of Public Service

### ***SAC Staff Contributor (Juvenile Statistics)***

Becky Noreus, Research Analyst, Muskie School of Public Service

### ***Editors***

Carmen Dorsey, Director, Muskie School of Public Service Justice Policy Program

George Shaler, Research Associate, Muskie School of Public Service

### ***Format and Design***

Sheri Moulton, Project Assistant, Muskie School of Public Service

### ***Special thanks to the Maine Statistical Analysis Center Advisory Group***

Roxy Hennings, CQI Director, Division of Juvenile Services, Maine Department of Corrections

Denise Lord, Deputy Commissioner, Maine Department of Corrections

Janet Joyeux, Deputy Commissioner, Maine Department of Public Safety

Barry Stoodley, Associate Commissioner of Juvenile Services, Maine Department of Corrections

Paul Vestal, Chair, Maine Criminal Justice Commission

Sherry Wilkins, Court Management Analyst, Maine Administrative Office of the Courts

### ***Attribution***

The Maine County Profile Justice Data was created under the auspices of the State Justice Statistics Program, Bureau of Justice Statistics (BJS), Department of Justice (DOJ). Funding was provided by BJS Grant 2008-BJ-CX-K034. The opinions, findings, and conclusions expressed in this publication are those of the authors and do not necessarily reflect the view of the Department of Justice.

All data included in the criminal justice highlights and the corresponding charts and tables was derived from the [2008 Maine Crime and Justice Data Book](#) and the [Maine Department of Public Safety](#) and the [Maine Department of Corrections Juvenile Recidivism Report](#).

Updated: 12/09

ABOUT THE UNIVERSITY OF SOUTHERN MAINE (USM)  
MUSKIE SCHOOL OF PUBLIC SERVICE

The USM Muskie School of Public Service educates leaders, informs public policy, and strengthens civic life through its graduate degree programs, research institutes and public outreach activities. By making the essential connection between research, practice, and informed public policy, the School is dedicated to improving the lives of people of all ages, in every county in Maine and every state in the nation.

*This report is available on the Justice Policy Program Website:*  
<http://muskie.usm.maine.edu/justiceresearch>