



# SOMERSET COUNTY

Justice Data

**USM Muskie School of Public Service**  
Maine Statistical Analysis Center



## Somerset County Facts

- *Somerset County, incorporated in 1809, is centrally located in Maine, bordering Kennebec County at its southern tip and Canada at its Northern tip, which is approximately 90 minutes from the Canadian city of Quebec.*
- *The county seat is Skowhegan.*
- *4% of Maine's population resides in Somerset County.*
- *The juvenile population was estimated at 11,157<sup>1</sup>.*

Population by Gender and Age, 2007 <sup>2</sup>			
Gender/Age Group	Number	Percent of Total	
		Somerset	Maine
<b>Total</b>	<b>51,381</b>	<b>100.0%</b>	<b>100.0%</b>
Male	25,232	49.1%	48.8%
Female	26,149	50.9%	51.2%
Under 14	8,906	17.3%	17.3%
15 to 24	6,248	12.2%	12.9%
25 to 34	5,915	11.5%	11.3%
35 to 44	7,506	14.6%	14.7%
45 to 54	8,471	16.5%	16.5%
55 to 64	6,622	12.9%	12.6%
65 to 74	4,062	7.9%	7.5%
75 to 84	2,663	5.2%	5.3%
85+	988	1.9%	1.9%
<b>Median Age</b>	-	<b>42</b>	<b>41</b>

<sup>1</sup>OJDDP Statistical Briefing Book

<sup>2</sup>Maine Department of Labor, 2007

## Demographic Facts<sup>3</sup>

- **Population growth in Somerset County (1.0% increase from 2000 to 2008) has been slower than the statewide rate (3.3% increase from 2000 to 2008).**
- **The County's overall population is older than the state's median age, but the percentage of those residents under 18 is similar to the statewide average.**
  - **Persons under 18 account for 21.6% of Somerset County's population compared with the statewide average of 21.2%.**
- **Educational attainment is lower than the statewide average.**
  - **80.8% of those ages 25+ in Somerset County have graduated from high school compared with the statewide average of 85.4%.**
  - **11.8% of those ages 25+ in Somerset County have obtained a bachelor's degree or higher compared with the statewide average of 22.9%.**
- **Most income measures are lower and poverty is higher than the statewide average.**
  - **The median household income in Somerset County is \$35,683 compared with a statewide average of \$45,832.**
  - **17.2% of Somerset County residents live below the poverty line compared with a statewide average of 12.2%.**
- **Population density: 13 people per square mile**
- **Largest cities (population): Skowhegan (8,758), Fairfield (6,734), Madison (4,592)**

<sup>3</sup>Ibid.

## Adult Criminal Justice Highlights

*SOMERSET COUNTY HAS SEEN AN INCREASE IN ADULT ARRESTS BUT A DECLINE IN INDEX CRIMES OVER THE PAST 10 YEARS.*

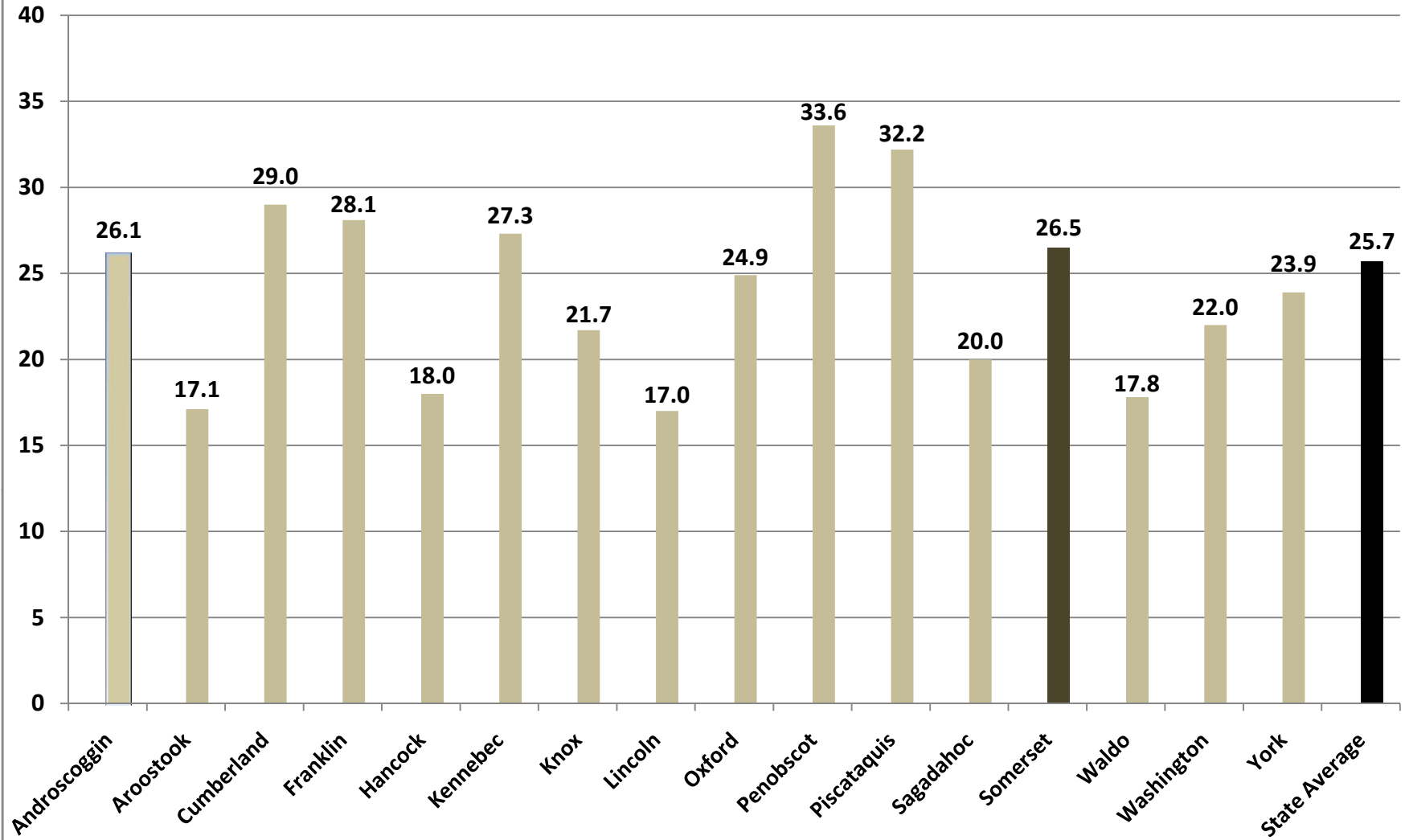
- The adult arrest rate increased by 10.4% over the last 5 years and increased by 36.9% over the last 10 years.
- In 2007, Somerset County had an index crime rate of 26.5 per 1,000 residents. This is comparable to the statewide average of 25.7 per 1,000 residents.
- Index crimes decreased by 7% over the last 5 years and decreased by 22.1% over the last 10 years. The violent crime rate also fell by 70% over the last 10 years.

## Juvenile Justice Highlights

*JUVENILE ARRESTS HAVE SHOWN A DECLINE OVER THE PAST 10 YEARS. HOWEVER, IN 2005, SOMERSET COUNTY REPORTED THE HIGHEST RATE OF JUVENILE RECIDIVISM.*

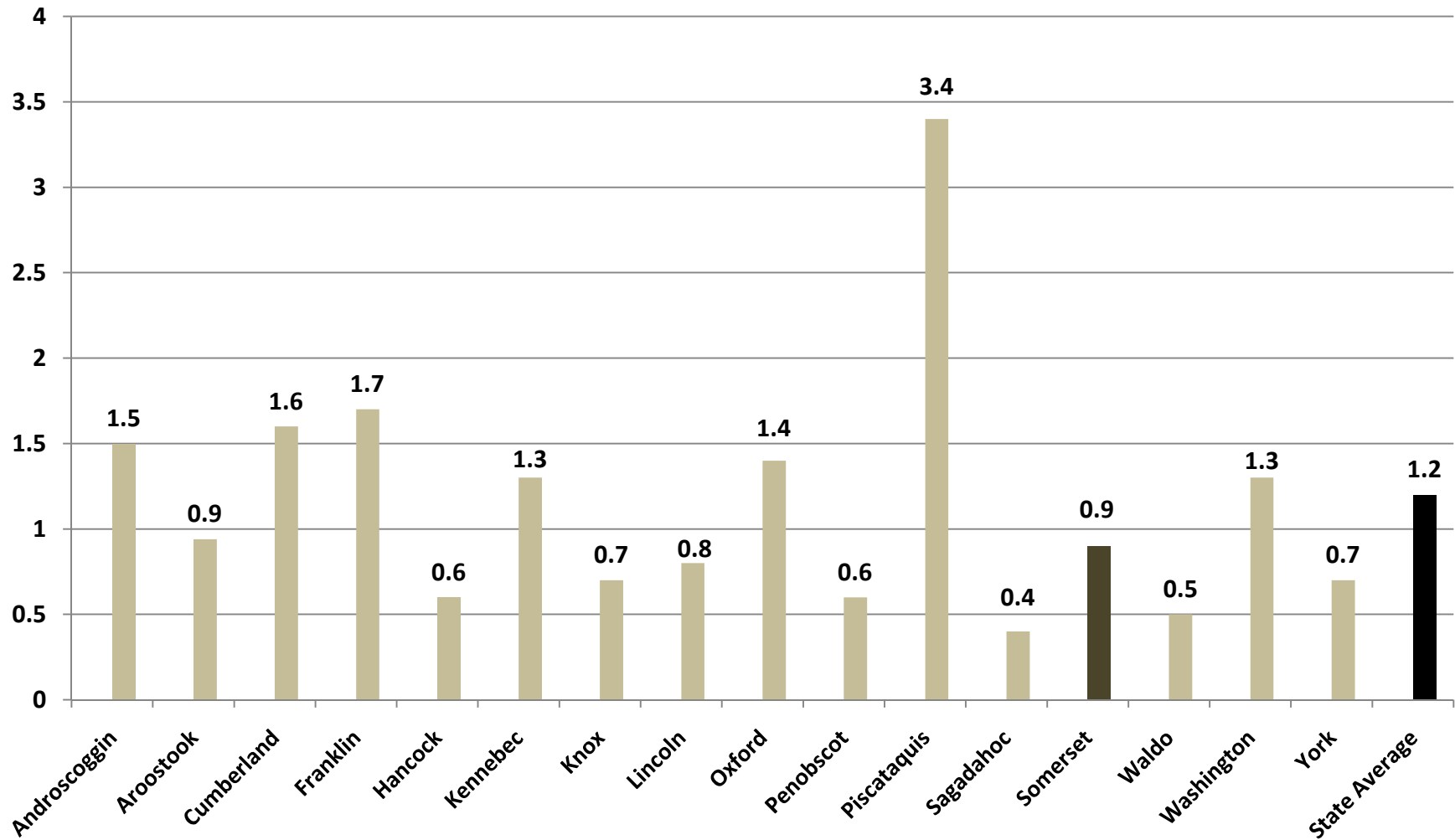
- The juvenile arrest rate has declined by 22.8% over the last 5 years and decreased by 17.6% over the last 10 years.
- In 2005, the rate of juveniles adjudicated for the first time was 39.5 per 1,000 residents. The statewide average was 8.4 per 1,000 residents in 2005.
- In 2005, the juvenile recidivism rate was 37%, the highest in the state. The statewide average is 27%.

## Index Crimes per 1,000 Residents, County Comparisons, 2007 (Total Population)

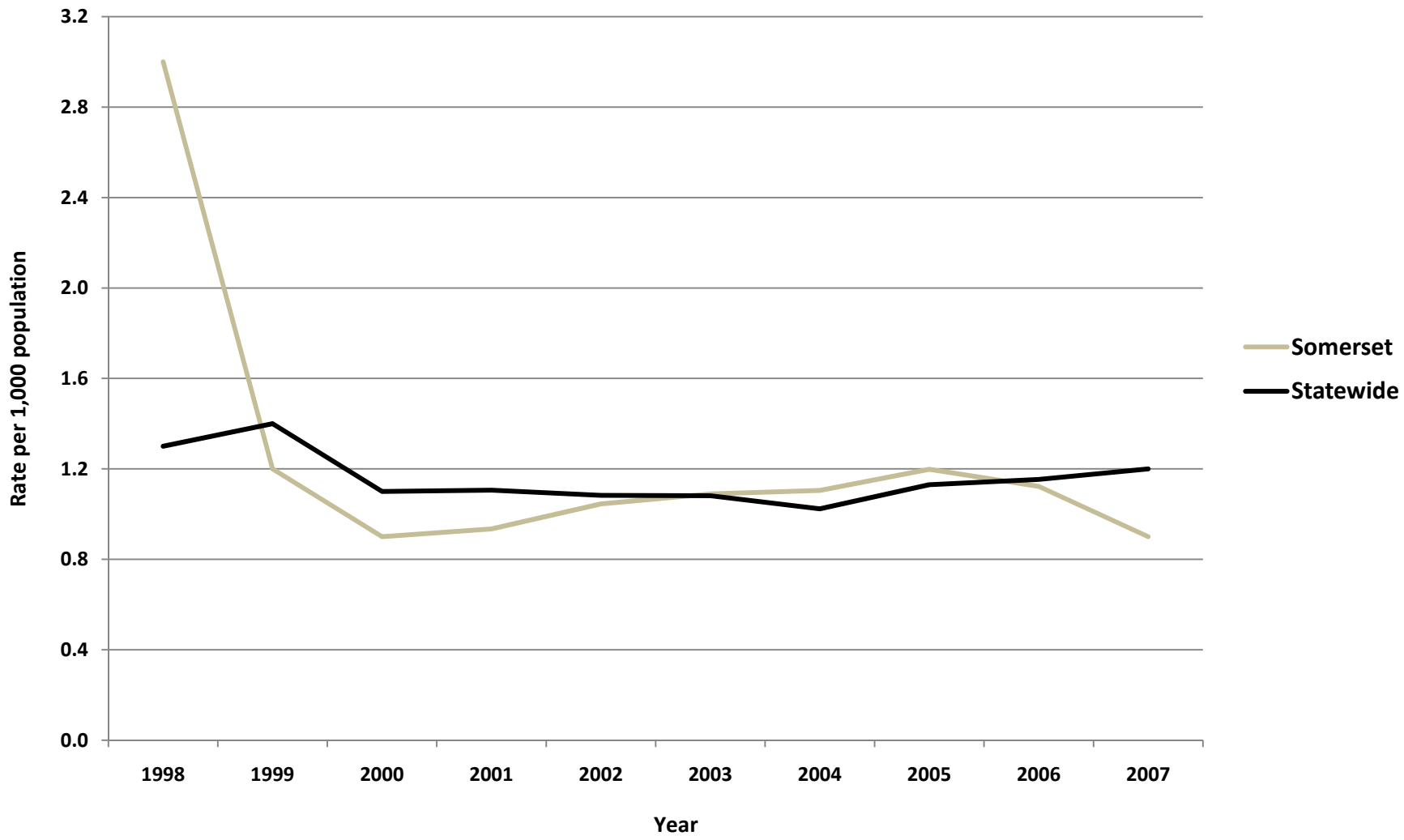


## Violent Crimes per 1,000 Residents, County Comparisons, 2007

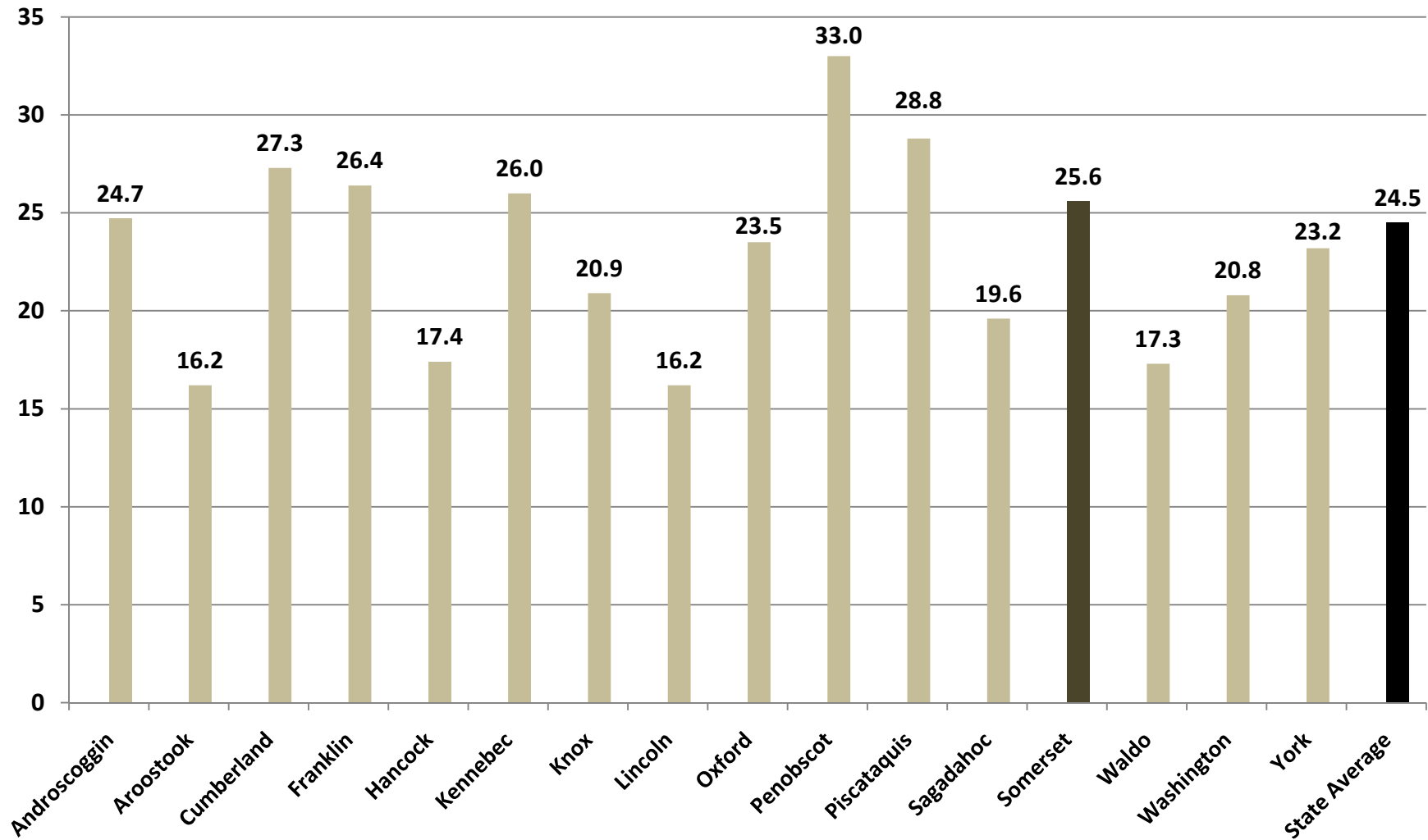
(Total Population)



### Somerset - Violent Crimes per 1,000 Residents (Total Population)

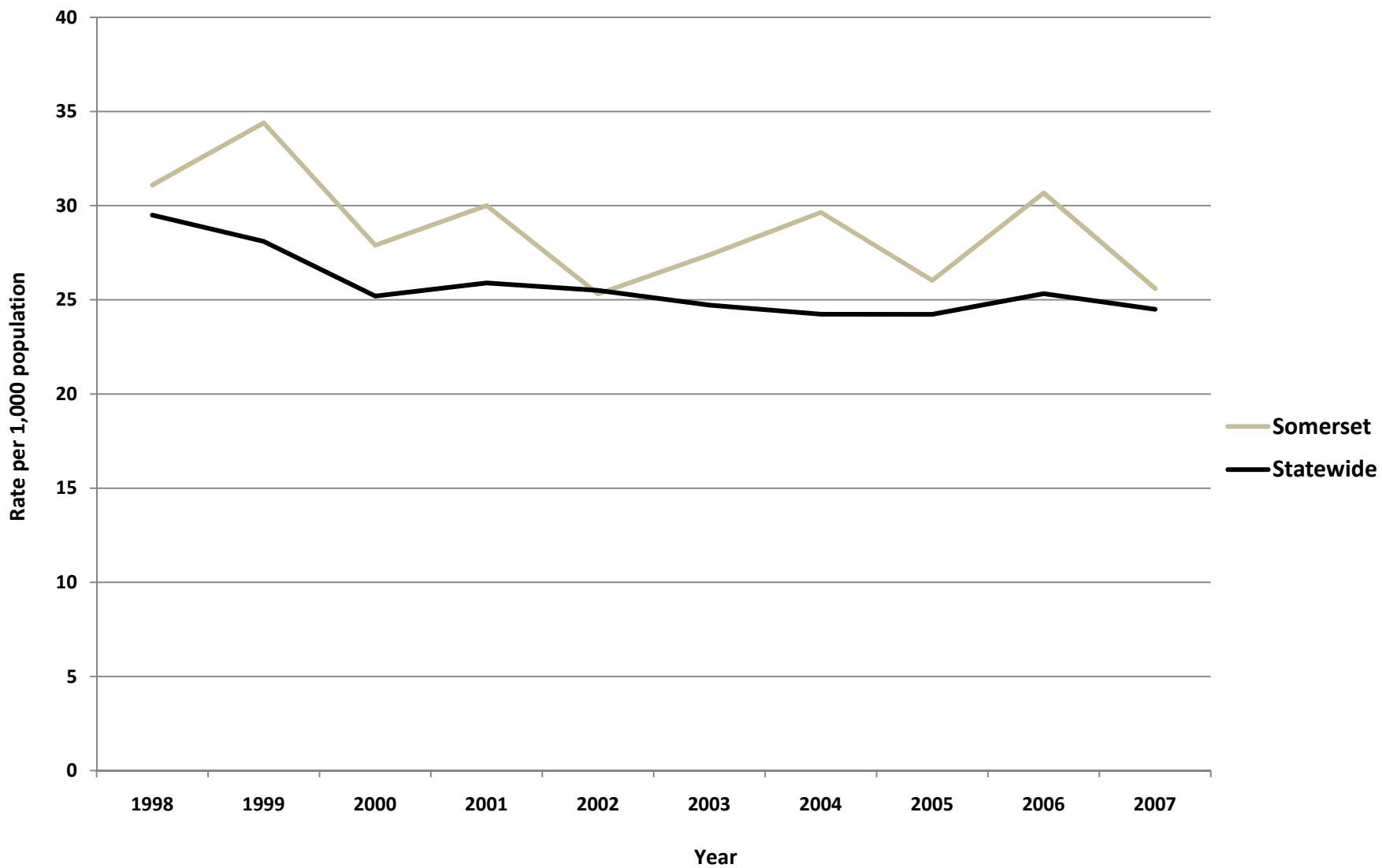


## Property Crimes per 1,000 Residents, County Comparisons, 2007 (Total Population)

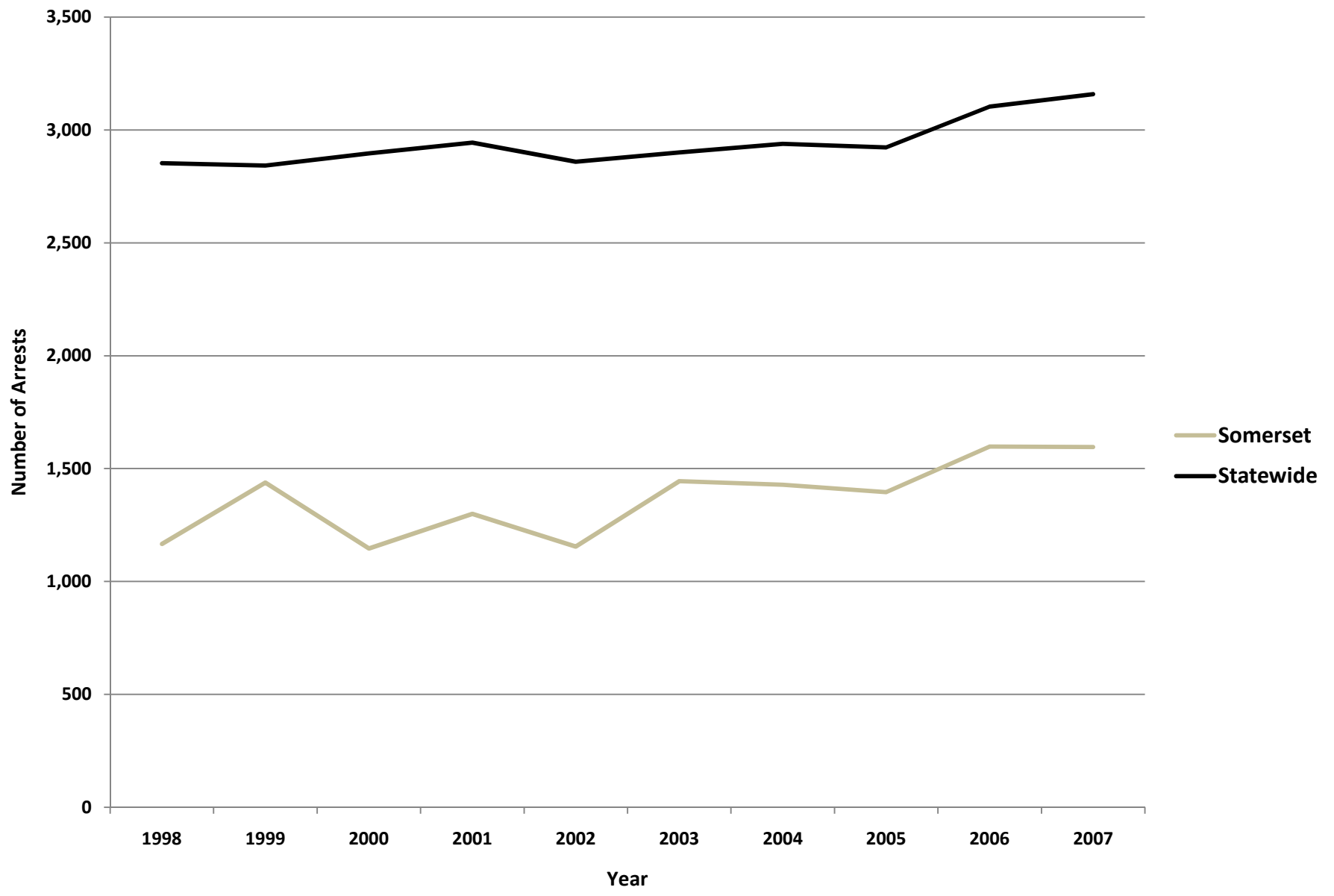




### Somerset - Property Crimes per 1,000 Residents (Total Population)



### Somerset - Adult Arrests vs. Statewide Average



<b>Somerset - Adult Crime Statistics (2007)</b>			
	<b>Overall</b>	<b>Male</b>	<b>Female</b>
<b>Adult Arrests 2007</b>	1,596	1,150	446
5-Year % Change	10.4%	4.3%	30.4%
10-Year % Change	36.9%	24.6%	83.5%
<b>Crime Rates (2007)</b>			
<b>Index Crimes 2007 (per 1,000 pop.)</b>	26.5	<b>Crime Rates are calculated using both Adult &amp; Juvenile Arrests</b>	
5-Year % Change	-7.0%		
10-Year % Change	-22.1%		
<b>Violent crimes 2007 (per 1,000 pop.)</b>	0.9		
5-Year % Change	-17.4%		
10-Year % Change	-70.0%		
<b>Property crimes 2007 (per 1,000 pop.)</b>	25.6		
5-Year % Change	-6.5%		
10-Year % Change	17.7%		
<b>Adult Arrests by Type (2007)</b>			
	<b>Adult Overall</b>	<b>Adult Male</b>	<b>Adult Female</b>
<a href="#">Murder &amp; Non-negligent Manslaughter</a>	2	2	0
<a href="#">Manslaughter by Negligence</a>	0	0	0
<a href="#">Forcible Rape</a>	2	2	0
<a href="#">Robbery</a>	8	8	0
<a href="#">Aggravated Assault</a>	30	24	6
<a href="#">Burglary, Breaking &amp; Entering</a>	43	35	8
<a href="#">Larceny-Theft (except Auto Theft)</a>	171	101	70
<a href="#">Motor Vehicle Theft</a>	15	11	4
<a href="#">Other Assaults</a>	278	213	65
<a href="#">Arson</a>	0	0	0
<a href="#">Forgery &amp; Counterfeiting</a>	15	9	6
<a href="#">Fraud</a>	79	33	46
<a href="#">Embezzlement</a>	2	1	1
<a href="#">Stolen Property: Buying, Receiving, Possessing</a>	4	3	1
<a href="#">Vandalism</a>	29	22	7
<a href="#">Weapons: Carrying, Possessing, etc.</a>	5	5	0
<a href="#">Prostitution &amp; Commercialized Vice</a>	0	0	0
<a href="#">Sex Offenses</a>	2	2	0
<a href="#">Drug Abuse Violations</a>	145	112	33
<a href="#">Gambling</a>	0	0	0
<a href="#">Offenses Against Family &amp; Children</a>	2	1	1
<a href="#">Driving Under the Influence</a>	339	255	84
<a href="#">Liquor Laws</a>	71	53	18
<a href="#">Drunkenness</a>	0	0	0
<a href="#">Disorderly Conduct</a>	28	18	10
<a href="#">All Other Offenses (Except Traffic)</a>	326	240	86
<b>Total</b>	<b>1,596</b>	<b>1,150</b>	<b>446</b>

Somerset- Juvenile Crime Statistics (2007)			
	Overall	Male	Female
<b>Juvenile Arrests 2007</b>	309	218	91
5-year % change Juvenile arrests	-22.8%	-27.1%	-9.9%
10-year % change Juvenile arrests	-17.6%	-28.5%	30.0%
Juvenile Justice System Outcomes			
	Rate	Number	
<a href="#">Referrals</a>	33.49 per 1,000 population	184	
<a href="#">Diversions</a>	57.07 per 100 referrals	105	
<a href="#">Adjudications</a>	65.22 per 100 petitions	90	
Juvenile Arrests by Type (2007)			
	Juvenile Overall	Juvenile Male	Juvenile Female
<a href="#">Murder &amp; Non-negligent Manslaughter</a>	0	0	0
<a href="#">Manslaughter by Negligence</a>	0	0	0
<a href="#">Forcible Rape</a>	0	0	0
<a href="#">Robbery</a>	1	0	1
<a href="#">Aggravated Assault</a>	4	1	3
<a href="#">Burglary, Breaking &amp; Entering</a>	21	19	2
<a href="#">Larceny-Theft (except Auto Theft)</a>	53	36	17
<a href="#">Motor Vehicle Theft</a>	9	5	4
<a href="#">Other Assaults</a>	39	26	13
<a href="#">Arson</a>	1	1	0
<a href="#">Forgery &amp; Counterfeiting</a>	1	1	0
<a href="#">Fraud</a>	0	0	0
<a href="#">Embezzlement</a>	0	0	0
<a href="#">Stolen Property: Buying, Receiving, Possessing</a>	1	1	0
<a href="#">Vandalism</a>	43	36	7
<a href="#">Weapons: Carrying, Possessing, etc.</a>	0	0	0
<a href="#">Prostitution &amp; Commercialized Vice</a>	0	0	0
<a href="#">Sex Offenses</a>	1	1	0
<a href="#">Drug Abuse Violations</a>	23	14	9
<a href="#">Gambling</a>	0	0	0
<a href="#">Offenses Against Family &amp; Children</a>	0	0	0
<a href="#">Driving Under the Influence</a>	4	3	1
<a href="#">Liquor Laws</a>	46	27	19
<a href="#">Drunkenness</a>	0	0	0
<a href="#">Disorderly Conduct</a>	2	2	0
<a href="#">All Other Offenses (Except Traffic)</a>	60	45	15
<a href="#">Curfew &amp; Loitering</a>	0	0	0
<a href="#">Runaways</a>	0	0	0
<b>Total</b>	<b>309</b>	<b>218</b>	<b>91</b>

**Referral:** Number of juveniles referred to the juvenile justice system.

**Diversion:** Number of juveniles formally diverted by a juvenile community corrections officer (JCCO).

**Adjudication:** Number of juveniles found guilty by a court of law.

## ACKNOWLEDGEMENTS

### ***Author***

William Ethridge, Muskie School Public Policy & Management Graduate Student

### ***Research Supervisor***

Mark Rubin, Research Associate, Muskie School of Public Service

### ***SAC Staff Contributor (Juvenile Statistics)***

Becky Noreus, Research Analyst, Muskie School of Public Service

### ***Editors***

Carmen Dorsey, Director, Muskie School of Public Service Justice Policy Program

George Shaler, Research Associate, Muskie School of Public Service

### ***Format and Design***

Sheri Moulton, Project Assistant, Muskie School of Public Service

### ***Special thanks to the Maine Statistical Analysis Center Advisory Group***

Roxy Hennings, CQI Director, Division of Juvenile Services, Maine Department of Corrections

Denise Lord, Deputy Commissioner, Maine Department of Corrections

Janet Joyeux, Deputy Commissioner, Maine Department of Public Safety

Barry Stoodley, Associate Commissioner of Juvenile Services, Maine Department of Corrections

Paul Vestal, Chair, Maine Criminal Justice Commission

Sherry Wilkins, Court Management Analyst, Maine Administrative Office of the Courts

### ***Attribution***

The Maine County Profile Justice Data was created under the auspices of the State Justice Statistics Program, Bureau of Justice Statistics (BJS), Department of Justice (DOJ). Funding was provided by BJS Grant 2008-BJ-CX-K034. The opinions, findings, and conclusions expressed in this publication are those of the authors and do not necessarily reflect the view of the Department of Justice.

All data included in the criminal justice highlights and the corresponding charts and tables was derived from the [2008 Maine Crime and Justice Data Book](#) and the [Maine Department of Public Safety](#) and the [Maine Department of Corrections Juvenile Recidivism Report](#).

Updated: 12/09

ABOUT THE UNIVERSITY OF SOUTHERN MAINE (USM)  
MUSKIE SCHOOL OF PUBLIC SERVICE

The USM Muskie School of Public Service educates leaders, informs public policy, and strengthens civic life through its graduate degree programs, research institutes and public outreach activities. By making the essential connection between research, practice, and informed public policy, the School is dedicated to improving the lives of people of all ages, in every county in Maine and every state in the nation.

***This report is available on the Justice Policy Program Website:  
<http://muskie.usm.maine.edu/justiceresearch>***