



WALDO COUNTY

 Justice Data

USM Muskie School of Public Service
Maine Statistical Analysis Center



Waldo County Facts

- *Waldo County, incorporated in 1827, is in mid-coast Maine along Penobscot Bay.*
- *The county is known for its coastal views as well as its mountain vistas. Belfast is the county seat of Waldo County. Waldo County is also a business center of Maine and is home to the credit card processing company Bank of America, which employs over 1,500 people in Belfast, Maine.*
- *3% of Maine's total population resides in Waldo County.*
- *In 2007, the juvenile population of Waldo County was estimated at 8,157¹.*

Population by Gender and Age, 2007 ²				
Gender/Age Group	Number	Percent of Total		
		Waldo	Maine	
Total	38,385	100.0%	100.0%	
Male	18,881	49.2%	48.8%	
Female	19,504	50.8%	51.2%	
Under 14	6,708	17.5%	17.3%	
15 to 24	4,747	12.4%	12.9%	
25 to 34	4,449	11.6%	11.3%	
35 to 44	5,442	14.2%	14.7%	
45 to 54	6,281	16.4%	16.5%	
55 to 64	5,273	13.7%	12.6%	
65 to 74	3,021	7.9%	7.5%	
75 to 84	1,753	4.6%	5.3%	
85+	711	1.9%	1.9%	
Median Age	-	42	41	

¹OJDDP Statistical Briefing Book

²Maine Department of Labor, 2007

Demographic Facts³

- Population growth in Waldo County (5.7% increase from 2000 to 2008) was faster than the statewide average (3.3% increase from 2000 to 2008).
- The overall population is older than the statewide average; however, the percentage of those under 18 is similar to the statewide average.
 - Persons under 18 account for 21.2% of Waldo County's population compared with the statewide average of 21.2%.
- Educational attainment is slightly lower than the statewide average.
 - 84.6% of those ages 25+ in Waldo County have graduated from high school compared with the statewide average of 85.4%.
 - 22.3% of those ages 25+ in Waldo County have obtained a bachelor's degree or higher compared with the statewide average of 22.9%.
- Most income measures are lower and poverty is higher than the statewide average.
 - The median household income in Waldo County is \$40,441 compared with a statewide average of \$45,832.
 - 14.5% of Waldo County residents live below the poverty line compared with a statewide average of 12.2%.
- Population density: 53 people per square mile
- Largest cities (population): Belfast (6,754), Winterport (3,555), Searsport (2,610)

³Ibid.

Adult Criminal Justice Highlights

WALDO COUNTY HAS SEEN A DECREASE IN ADULT ARRESTS AND VIOLENT CRIMES OVER RECENT YEARS.

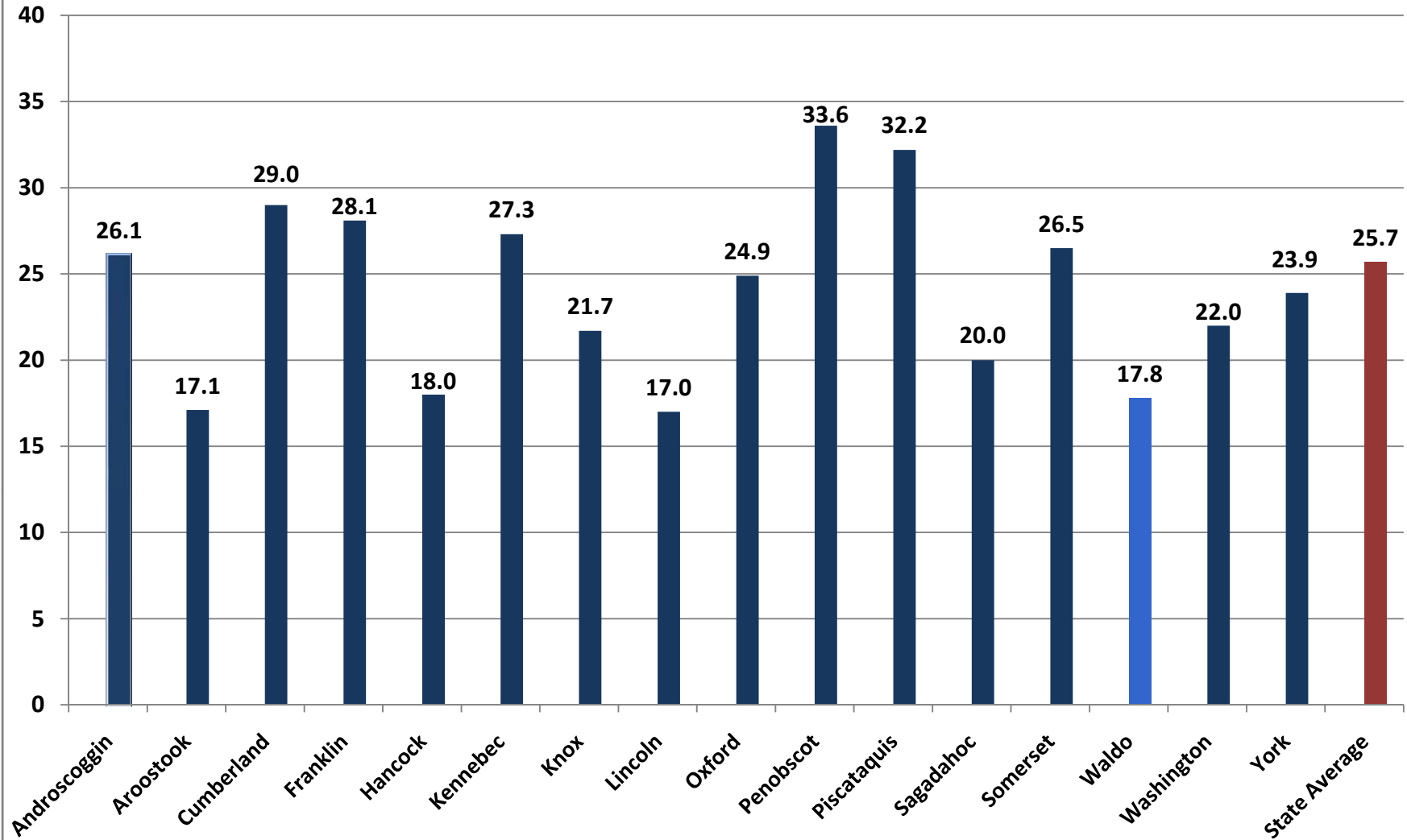
- The adult arrest rate declined by 32.3% over the last 5 years and declined by 19.6% over the last 10 years.
- In 2007, Oxford County had an index crime rate of 17.8 per 1,000 residents, one of the lowest rates in the state. The statewide average is 25.7 per 1,000 residents.
- Index crimes decreased by 6.6% over the last 5 years, but experienced an overall increase of 21.9% from 10 years ago. Violent crimes have decreased by 65.5% from the high of 1.4 per 1,000 residents reported in 2003. In 2007, the rate had fallen to 0.5 violent crimes per 1,000 residents. This is comparable to the 1998 rate of 0.4 violent crimes per 1,000 residents.

Juvenile Justice Highlights

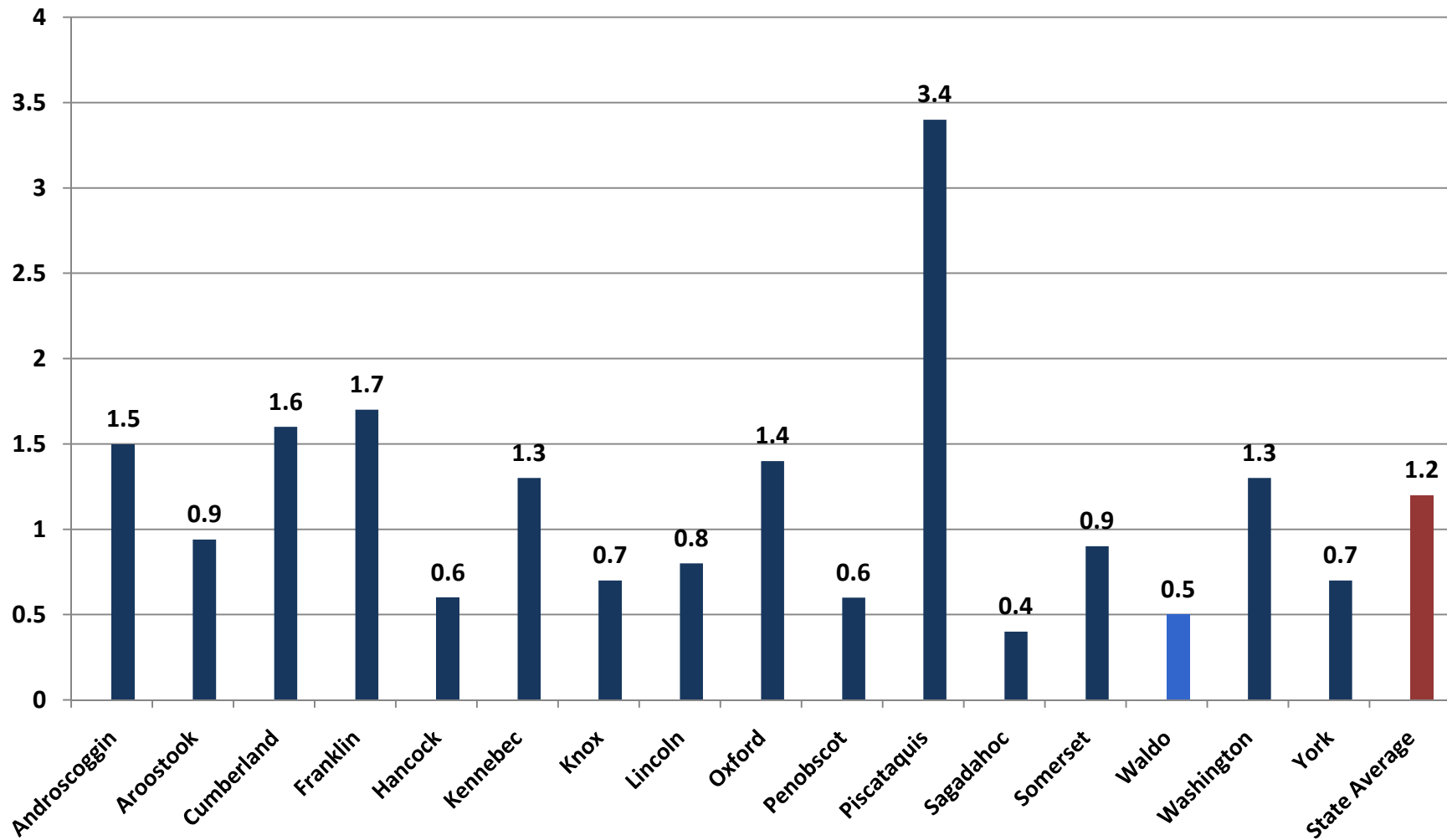
JUVENILE ARRESTS DECLINED OVER THE PAST 10 YEARS. IN 2005, JUVENILE ADJUDICATION AND JUVENILE RECIDIVISM RATES WERE CLOSE TO THE STATEWIDE AVERAGE.

- The juvenile arrest rate has declined by 31.4% over the last 5 years and decreased by 49.1% over the last 10 years.
- In 2005, the rate of juveniles adjudicated for the first time was 9.2 per 1,000 residents. This is comparable to the statewide average of 8.4 per 1,000 residents.
- In 2005, the juvenile recidivism rate was 23%. This is below the statewide average of 27%.

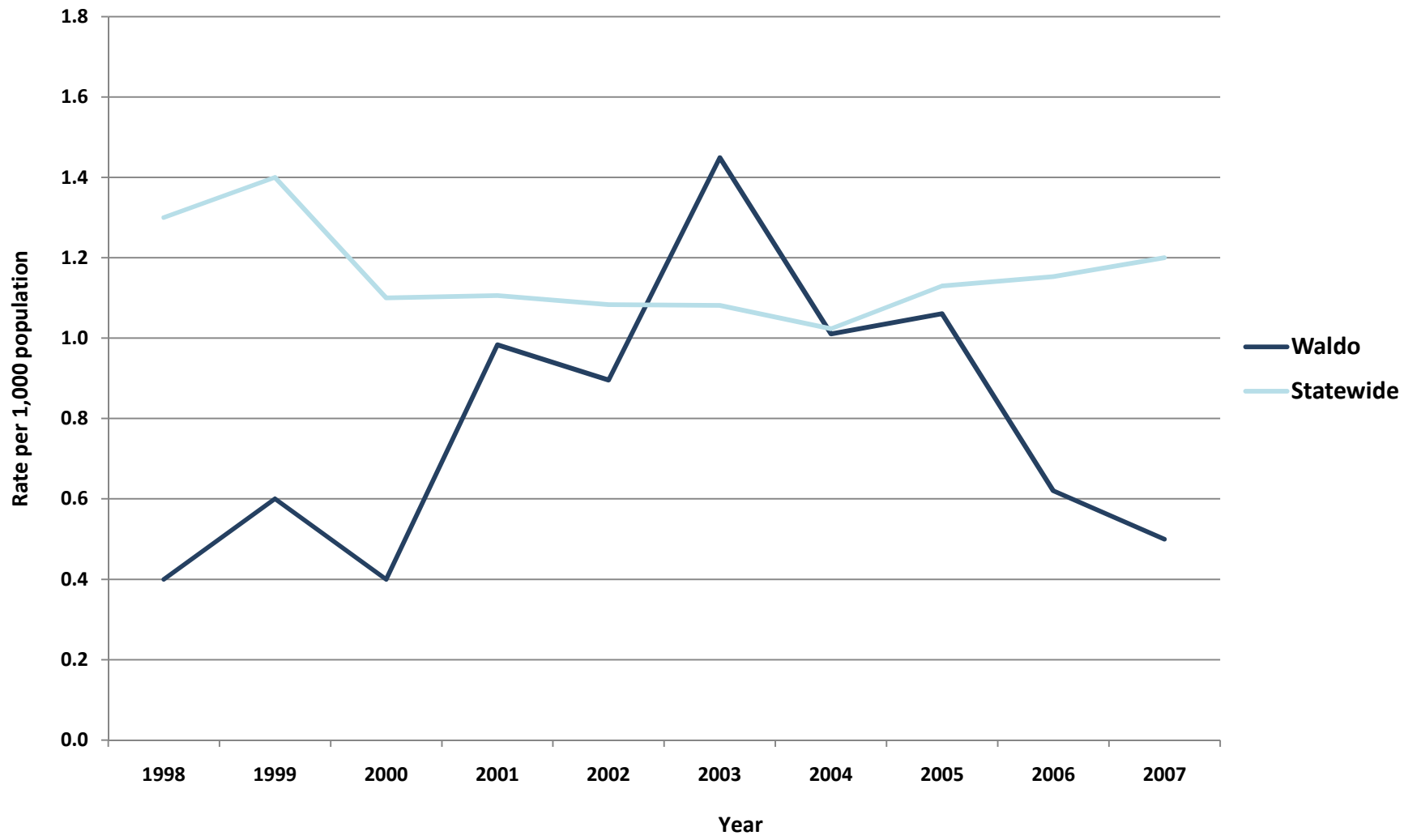
Index Crimes per 1,000 Residents, County Comparisons, 2007 (Total Population)



Violent Crimes per 1,000 Residents, County Comparisons, 2007 (Total Population)

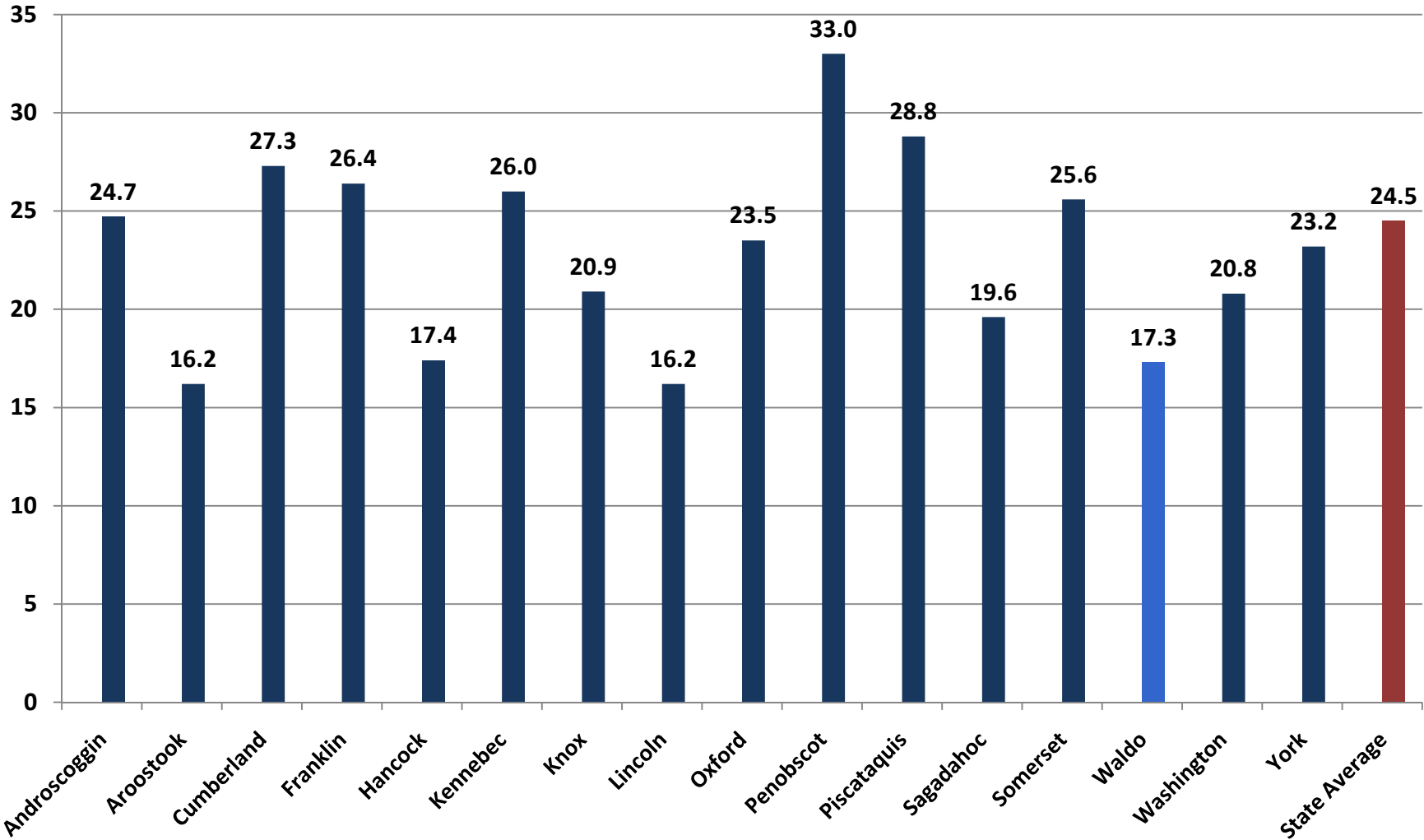


Waldo - Violent Crimes per 1,000 Residents (Total Population)

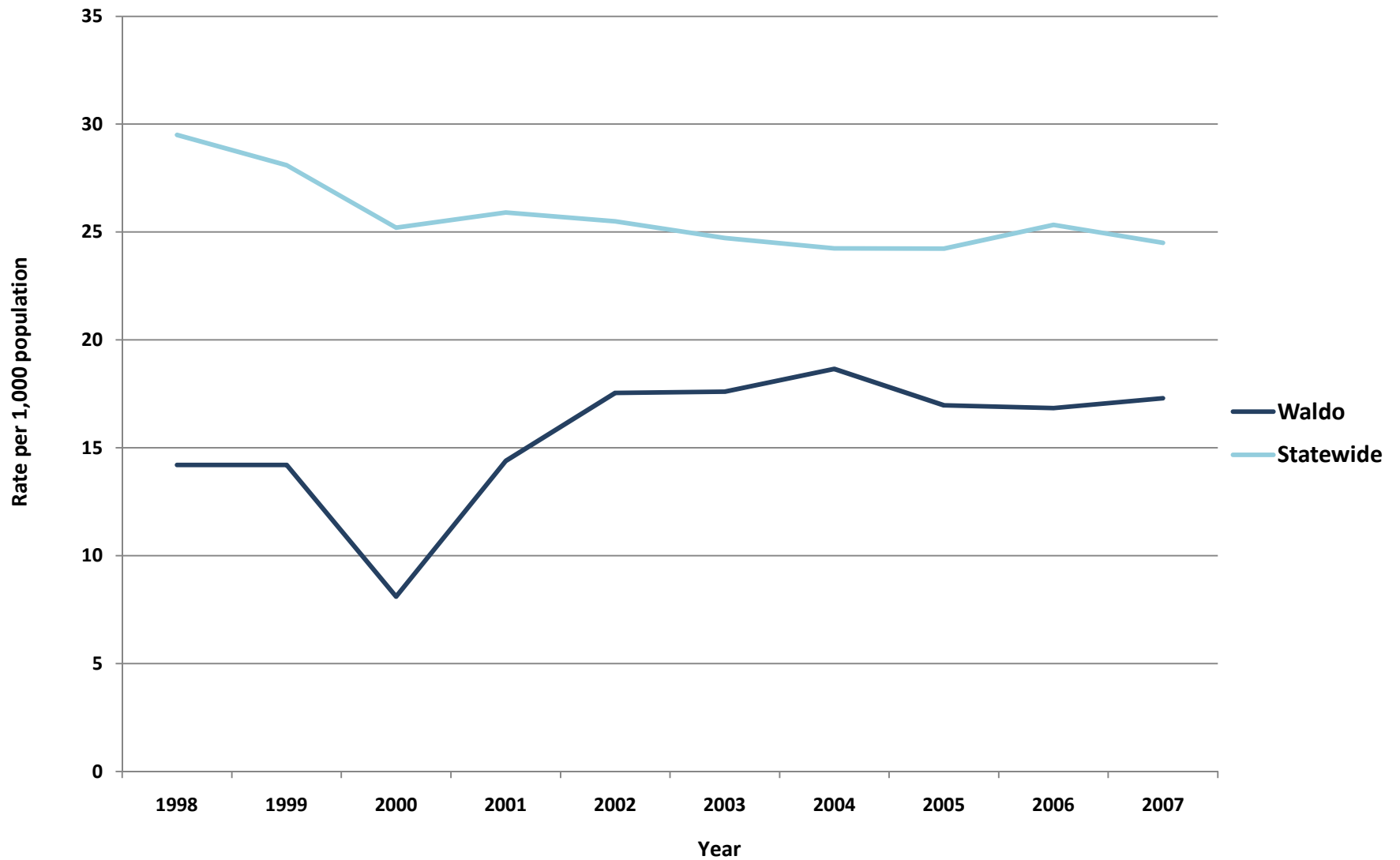


Property Crimes per 1,000 Residents, County Comparisons, 2007

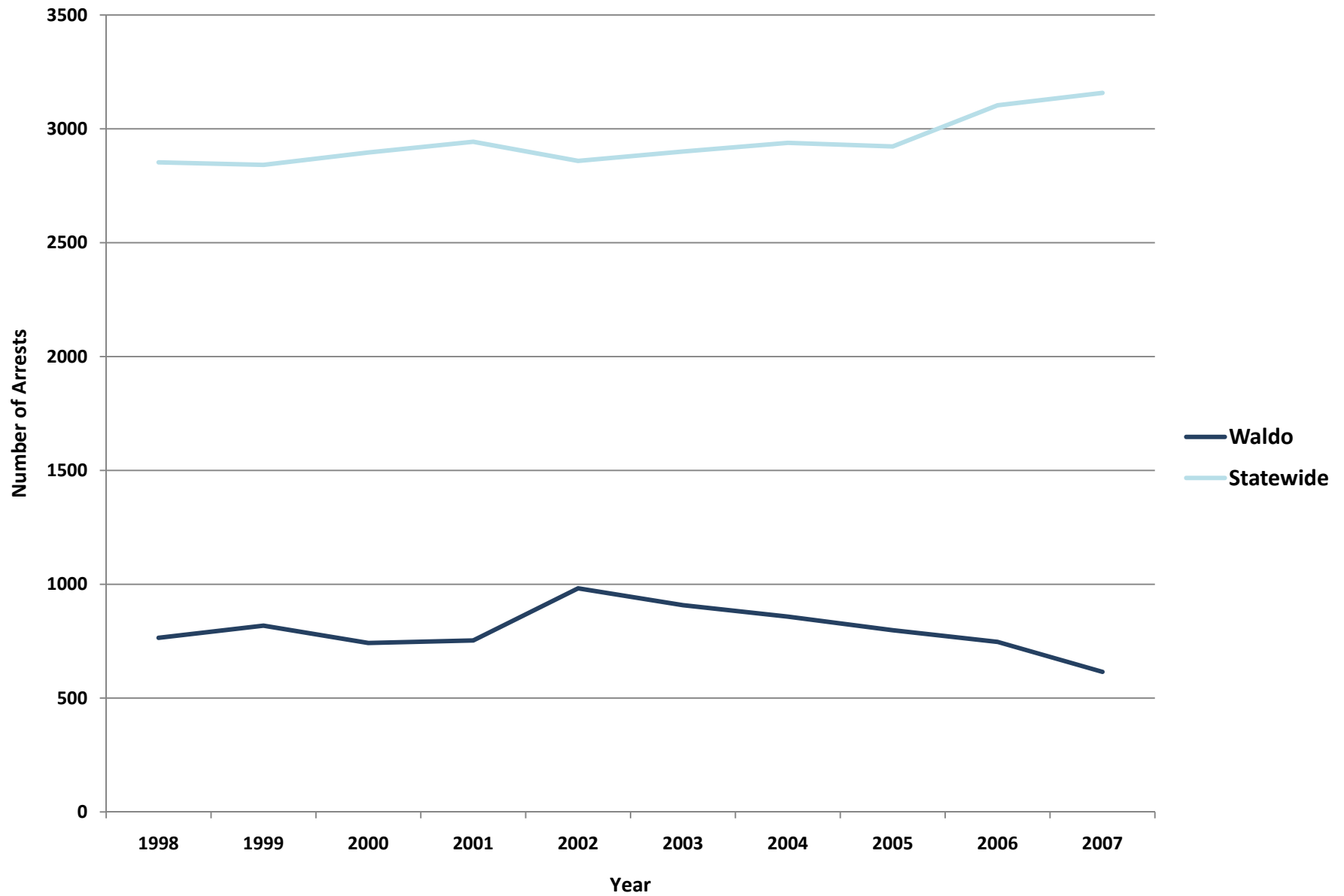
(Total Population)



Waldo - Property Crimes per 1,000 Residents (Total Population)



Waldo - Adult Arrests vs. Statewide Average



Waldo - Adult Crime Statistics (2007)			
	Overall	Male	Female
Adult Arrests 2007	615	470	145
5-Year % Change	-32.3%	-34.6%	-23.3%
10-Year % Change	-19.6%	-25.4%	7.4%
Crime Rates (2007)			
Index Crimes 2007 (per 1,000 pop.)	17.8	Crime Rates are calculated using both Adult & Juvenile Arrests	
5-Year % Change	-6.6%		
10-Year % Change	21.9%		
Violent crimes 2007 (per 1,000 pop.)	0.5		
5-Year % Change	-65.5%		
10-Year % Change	25.0%		
Property crimes 2007 (per 1,000 pop.)	17.3		
5-Year % Change	-1.7%		
10-Year % Change	21.8%		
Adult Arrests by Type (2007)			
	Adult Overall	Adult Male	Adult Female
Murder & Non-negligent Manslaughter	0	0	0
Manslaughter by Negligence	0	0	0
Forcible Rape	2	2	0
Robbery	2	2	0
Aggravated Assault	12	11	1
Burglary, Breaking & Entering	24	22	2
Larceny-Theft (except Auto Theft)	87	39	48
Motor Vehicle Theft	3	3	0
Other Assaults	140	122	18
Arson	5	5	0
Forgery & Counterfeiting	3	1	2
Fraud	11	5	6
Embezzlement	1	0	1
Stolen Property: Buying, Receiving, Possessing	0	0	0
Vandalism	9	6	3
Weapons: Carrying, Possessing, etc.	3	3	0
Prostitution & Commercialized Vice	1	1	0
Sex Offenses	0	0	0
Drug Abuse Violations	90	52	38
Gambling	0	0	0
Offenses Against Family & Children	2	2	0
Driving Under the Influence	111	76	35
Liquor Laws	30	20	10
Drunkenness	1	0	1
Disorderly Conduct	24	14	10
All Other Offenses (Except Traffic)	187	84	103
Total	615	470	145

Waldo- Juvenile Crime Statistics (2007)			
	Overall	Male	Female
Juvenile Arrests 2007	81	66	15
5-year % change Juvenile arrests	-31.4%	-25.0%	-50.0%
10-year % change Juvenile arrests	-49.1%	-42.6%	-65.9%
Juvenile Justice System Outcomes			
	Rate	Number	
Referrals	17.34 per 1,000 population	69	
Diversions	75.36 per 100 referrals	52	
Adjudications	56.94 per 100 petitions	41	
Juvenile Arrests by Type (2007)			
	Juvenile Overall	Juvenile Male	Juvenile Female
Murder & Non-negligent Manslaughter	0	0	0
Manslaughter by Negligence	0	0	0
Forcible Rape	0	0	0
Robbery	0	0	0
Aggravated Assault	1	1	0
Burglary, Breaking & Entering	5	4	1
Larceny-Theft (except Auto Theft)	3	2	1
Motor Vehicle Theft	1	0	1
Other Assaults	20	13	7
Arson	2	2	0
Forgery & Counterfeiting	0	0	0
Fraud	0	0	0
Embezzlement	0	0	0
Stolen Property: Buying, Receiving, Possessing	1	1	0
Vandalism	7	7	0
Weapons: Carrying, Possessing, etc.	0	0	0
Prostitution & Commercialized Vice	0	0	0
Sex Offenses	1	1	0
Drug Abuse Violations	17	14	3
Gambling	0	0	0
Offenses Against Family & Children	0	0	0
Driving Under the Influence	3	3	0
Liquor Laws	4	4	0
Drunkenness	0	0	0
Disorderly Conduct	4	4	0
All Other Offenses (Except Traffic)	12	10	2
Curfew & Loitering	0	0	0
Runaways	0	0	0
Total	81	66	15

Referral: Number of juveniles referred to the juvenile justice system.

Diversion: Number of juveniles formally diverted by a juvenile community corrections officer (JCCO).

Adjudication: Number of juveniles found guilty by a court of law.

ACKNOWLEDGEMENTS

Author

William Ethridge, Muskie School Public Policy & Management Graduate Student

Research Supervisor

Mark Rubin, Research Associate, Muskie School of Public Service

SAC Staff Contributor (Juvenile Statistics)

Becky Noreus, Research Analyst, Muskie School of Public Service

Editors

Carmen Dorsey, Director, Muskie School of Public Service Justice Policy Program

George Shaler, Research Associate, Muskie School of Public Service

Format and Design

Sheri Moulton, Project Assistant, Muskie School of Public Service

Special thanks to the Maine Statistical Analysis Center Advisory Group

Roxy Hennings, CQI Director, Division of Juvenile Services, Maine Department of Corrections

Denise Lord, Deputy Commissioner, Maine Department of Corrections

Janet Joyeux, Deputy Commissioner, Maine Department of Public Safety

Barry Stoodley, Associate Commissioner of Juvenile Services, Maine Department of Corrections

Paul Vestal, Chair, Maine Criminal Justice Commission

Sherry Wilkins, Court Management Analyst, Maine Administrative Office of the Courts

Attribution

The Maine County Profile Justice Data was created under the auspices of the State Justice Statistics Program, Bureau of Justice Statistics (BJS), Department of Justice (DOJ). Funding was provided by BJS Grant 2008-BJ-CX-K034. The opinions, findings, and conclusions expressed in this publication are those of the authors and do not necessarily reflect the view of the Department of Justice.

All data included in the criminal justice highlights and the corresponding charts and tables was derived from the [2008 Maine Crime and Justice Data Book](#) and the [Maine Department of Public Safety](#) and the [Maine Department of Corrections Juvenile Recidivism Report](#).

Updated: 12/09

ABOUT THE UNIVERSITY OF SOUTHERN MAINE (USM)
MUSKIE SCHOOL OF PUBLIC SERVICE

The USM Muskie School of Public Service educates leaders, informs public policy, and strengthens civic life through its graduate degree programs, research institutes and public outreach activities. By making the essential connection between research, practice, and informed public policy, the School is dedicated to improving the lives of people of all ages, in every county in Maine and every state in the nation.

This report is available on the Justice Policy Program Website:
<http://muskie.usm.maine.edu/justiceresearch>