



WASHINGTON COUNTY

Justice Data

USM Muskie School of Public Service
Maine Statistical Analysis Center



Washington County Facts

- *Washington County, incorporated in 1789, is both a coastal as well as a forested area in Maine.*
- *It has 1.47 million acres, or 85% of its land, of forest land and 133,000 acres of lakes and ponds. Washington County is the easternmost county in the United States. Washington County is also home to the Passamaquoddy Indian Reservation.*
- *2% of Maine's total population resides in Washington County.*
- *The juvenile population was estimated at 6,669¹.*

Population by Gender and Age, 2007 ²			
Gender/Age Group	Number	Percent of Total	
		Washington	Maine
Total	32,801	100.0%	100.0%
Male	16,027	48.9%	48.8%
Female	16,774	51.1%	51.2%
Under 14	5,428	16.5%	17.3%
15 to 24	3,895	11.9%	12.9%
25 to 34	3,640	11.1%	11.3%
35 to 44	4,396	13.4%	14.7%
45 to 54	5,175	15.8%	16.5%
55 to 64	4,379	13.4%	12.6%
65 to 74	3,001	9.1%	7.5%
75 to 84	2,119	6.5%	5.3%
85+	768	2.3%	1.9%
Median Age	-	43	41

¹OJJDP Statistical Briefing Book

²Maine Department of Labor, 2007

Demographic Facts³

- Population has been declining in Washington County for several years. (4.2% decrease from 2000 to 2008). The statewide growth rate is 3.3% over the same time period.
- The population is older than the statewide average.
 - Persons under 18 account for 20.4% of Washington County's population compared with the statewide average of 21.2%.
- Educational attainment is lower than average.
 - 79.9% of those ages 25+ in Washington County have graduated from high school compared with the statewide average of 85.4%.
 - 14.7% of those ages 25+ in Washington County have obtained a bachelor's degree or higher compared with the statewide average of 22.9%.
- Most income measures are lower and poverty is higher than the statewide average.
 - The median household income in Washington County is \$32,624 compared with a statewide average of \$45,832.
 - 20.1% of Washington County residents live below the poverty line compared with a statewide average of 12.2%.
- Population density: 13 people per square mile
- Largest municipalities (population Calais (3,211), Machias (2,155), Baileyville (1,573))

³Ibid.

Adult Criminal Justice Highlights

WASHINGTON COUNTY HAS SEEN A SLIGHT INCREASE IN ADULT ARRESTS AND HAS MAINTAINED A RELATIVELY STEADY INDEX CRIME RATE OVER THE PAST 10 YEARS.

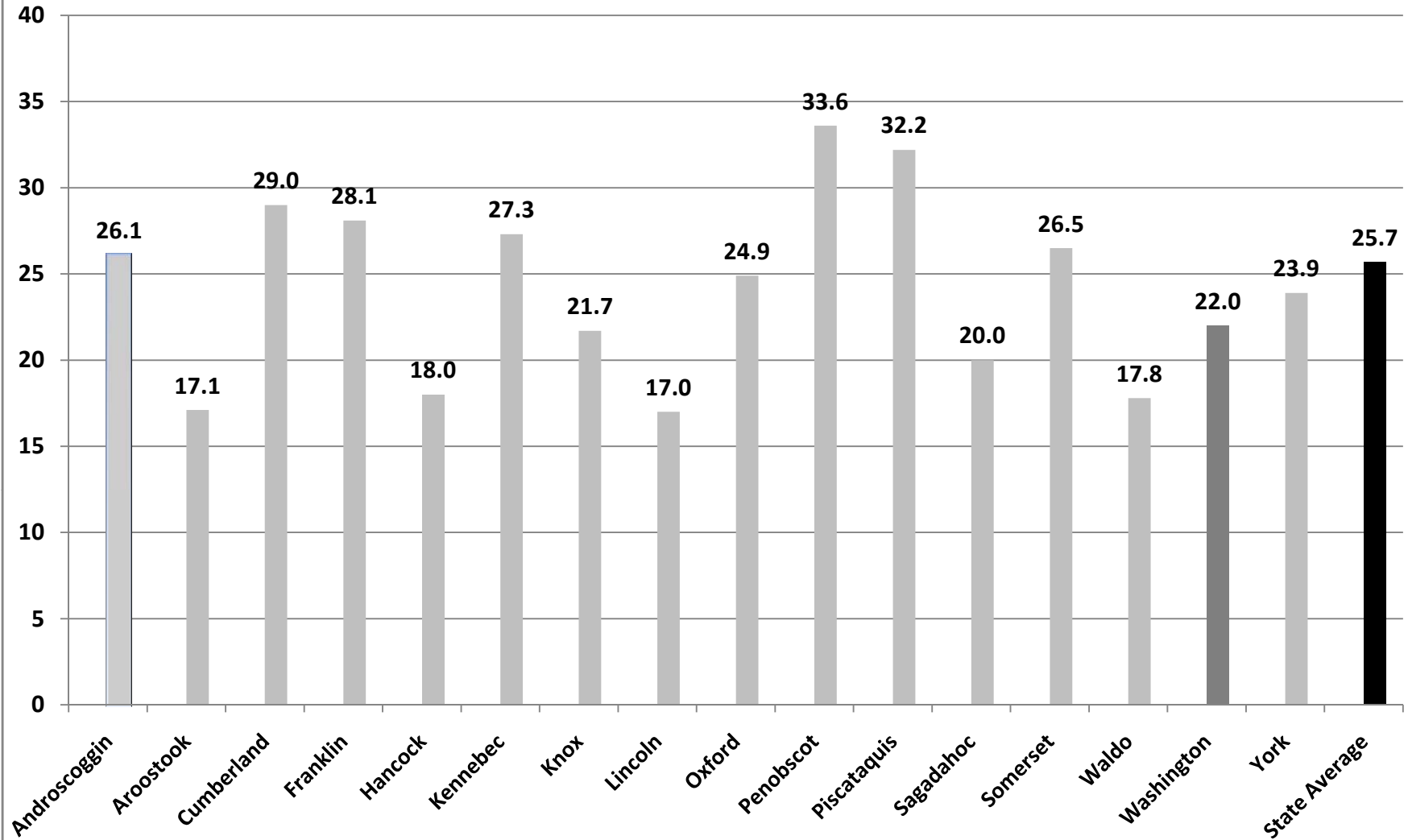
- The adult arrest rate increased by 12.6% over the last 5 years and increased by 11.9% over the last 10 years.
- In 2007, Washington County had an index crime rate of 22.0 per 1,000 residents. The statewide average is 25.7 per 1,000 residents.
- The index crime rate has remained relatively steady, increasing by only 7.4% over the last 5 years and declining by 4.3% over the last 10 years. The property and violent crime rates have remained similarly constant.

Juvenile Justice Highlights

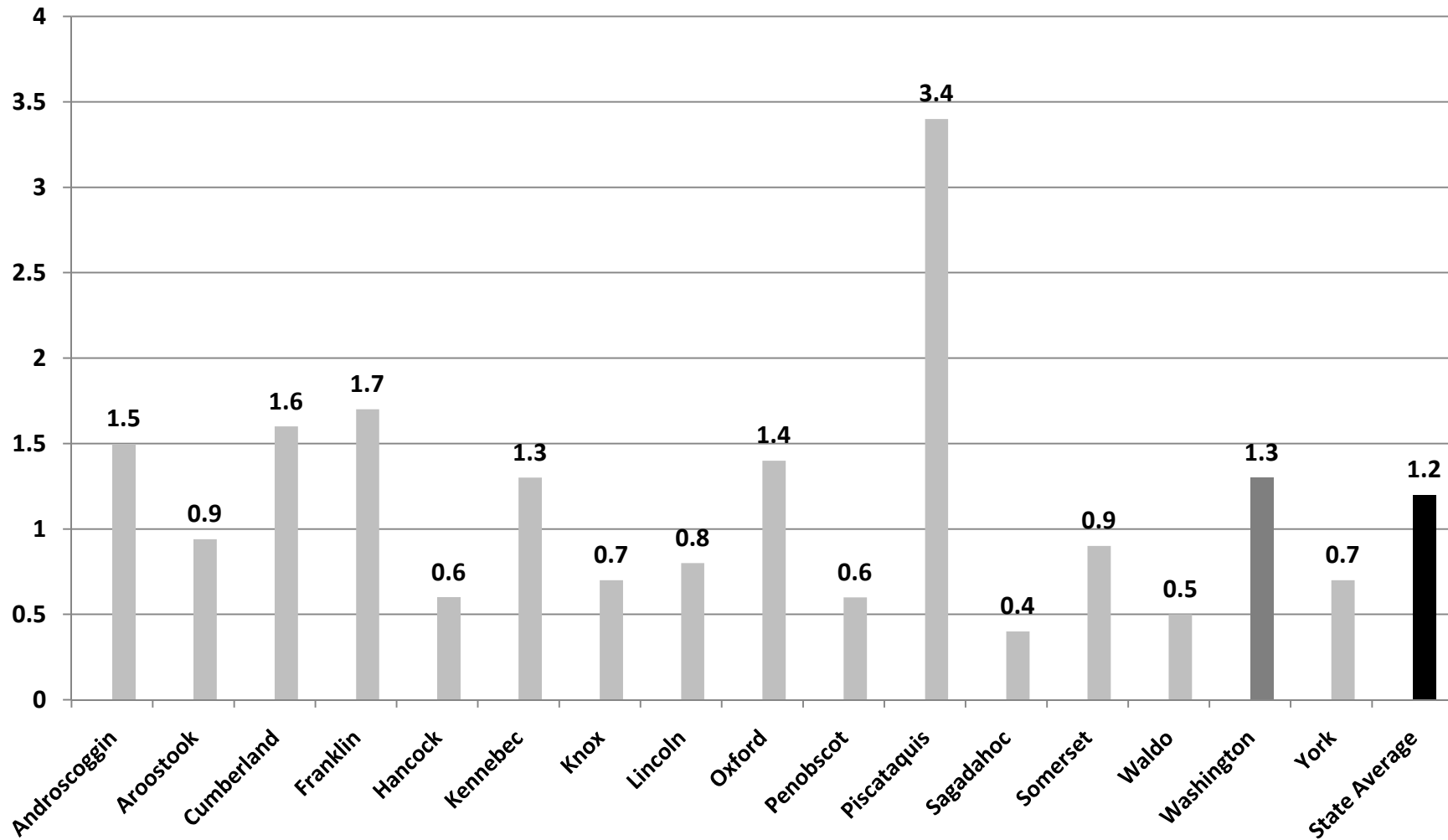
JUVENILE ARRESTS HAVE SHOWN A DECLINE OVER THE PAST 10 YEARS. IN 2005, WASHINGTON COUNTY HAD A RELATIVELY HIGH RATE OF FIRST TIME JUVENILE ADJUDICATIONS, BUT ONE OF THE LOWEST JUVENILE RECIDIVISM RATES IN THE STATE.

- The juvenile arrest rate has declined by 54.8% over the last 5 years and decreased by 60.2% over the last 10 years.
- In 2005, the rate of juveniles adjudicated for the first time was 12.4 per 1,000 residents. This is an increase of 44% over the previous year and above the statewide average of 8.4 per 1,000 residents.
- In 2005, the juvenile recidivism rate was 8%. Along with Sagadahoc County, this is the lowest juvenile recidivism rate in the state. The statewide average is 27%.

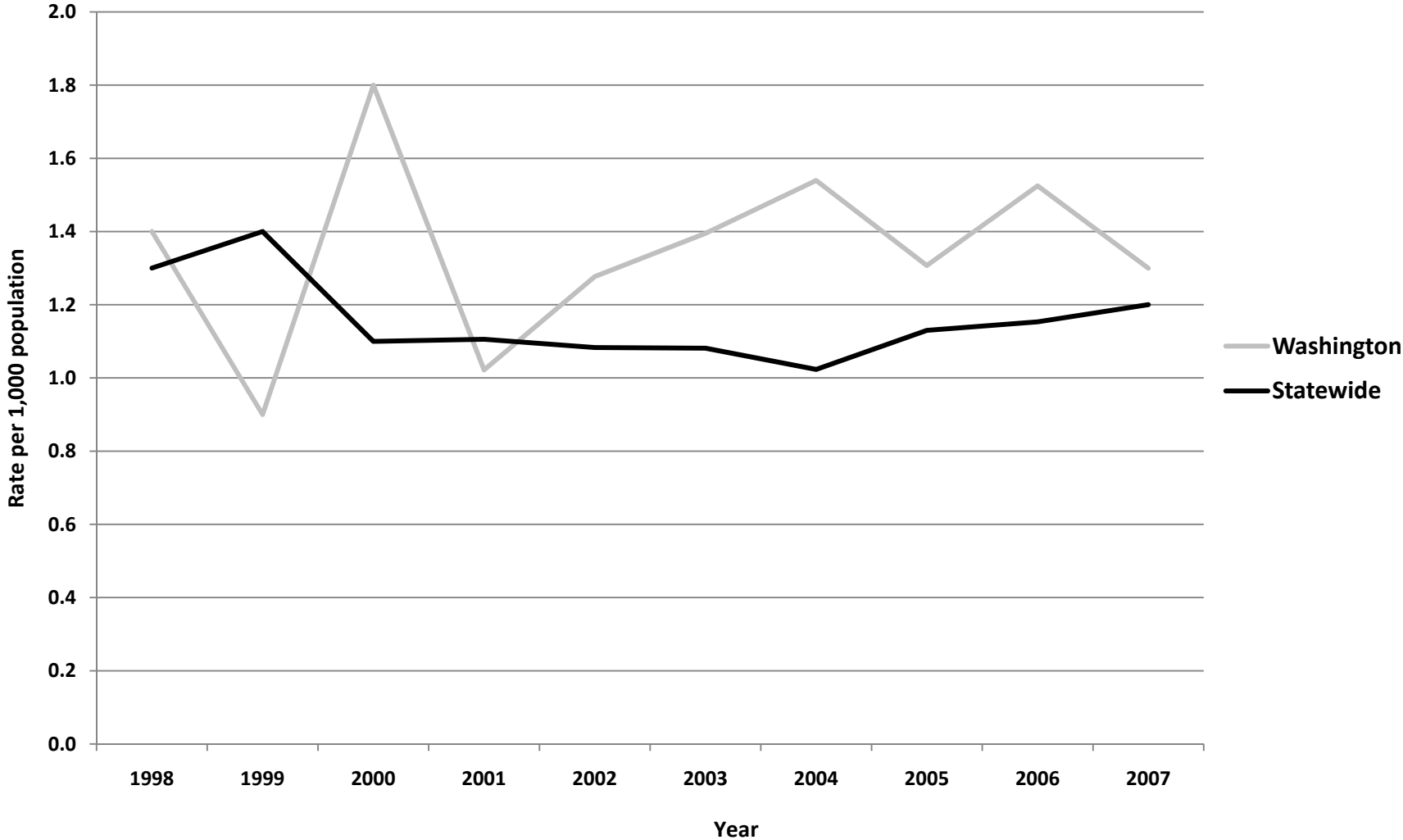
Index Crimes per 1,000 Residents, County Comparisons, 2007 (Total Population)



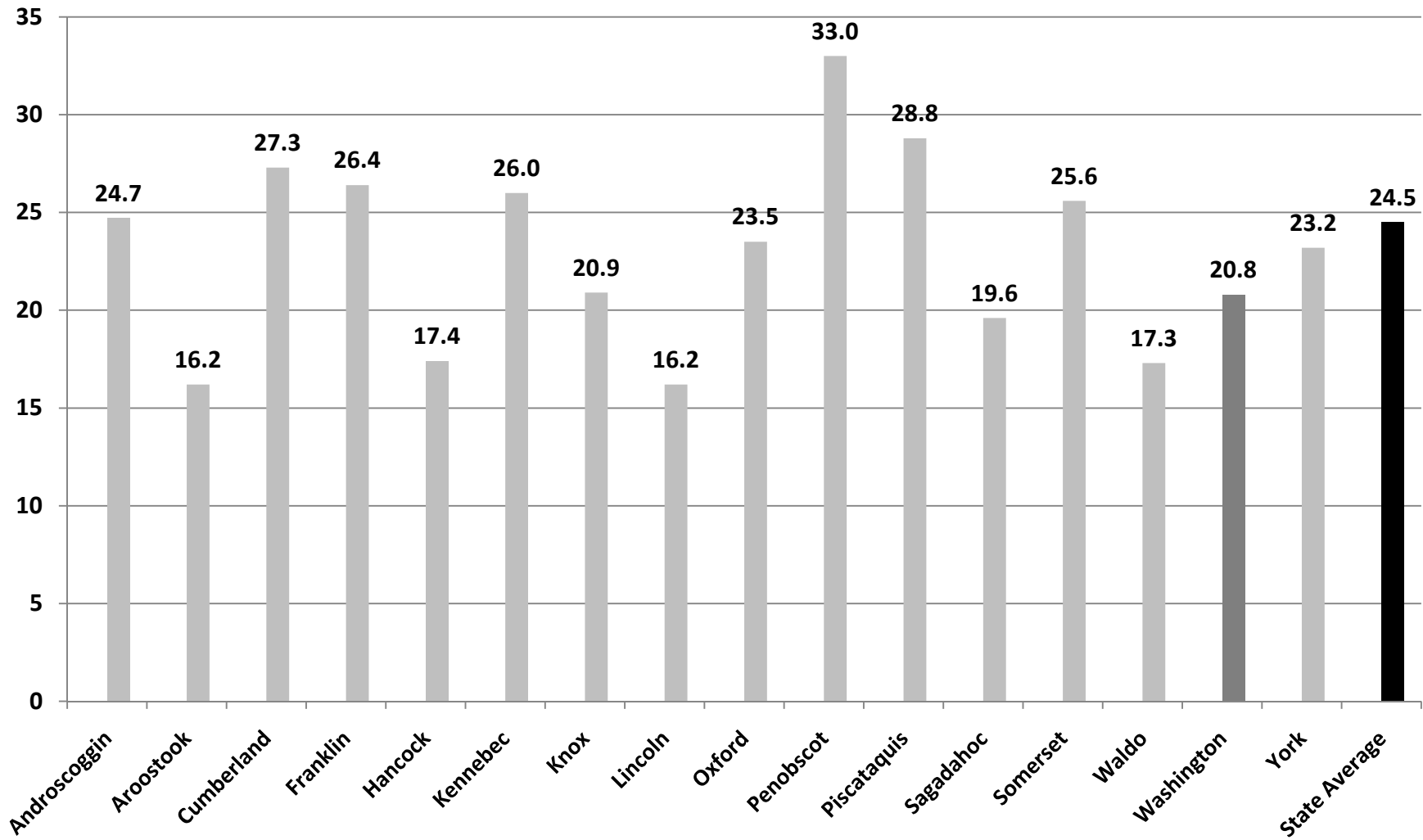
Violent Crimes per 1,000 Residents, County Comparisons, 2007 (Total Population)



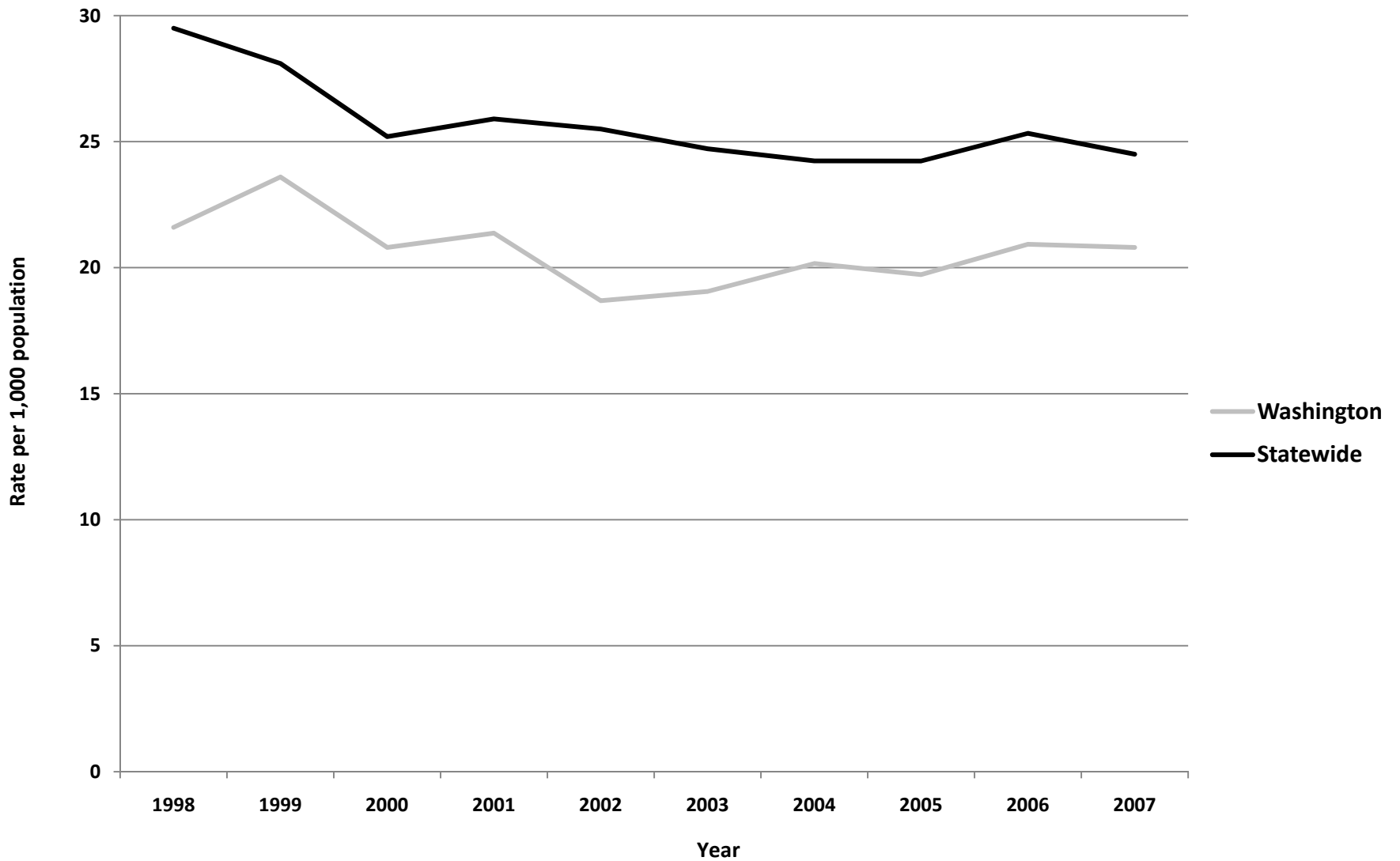
Washington - Violent Crimes per 1,000 Residents (Total Population)



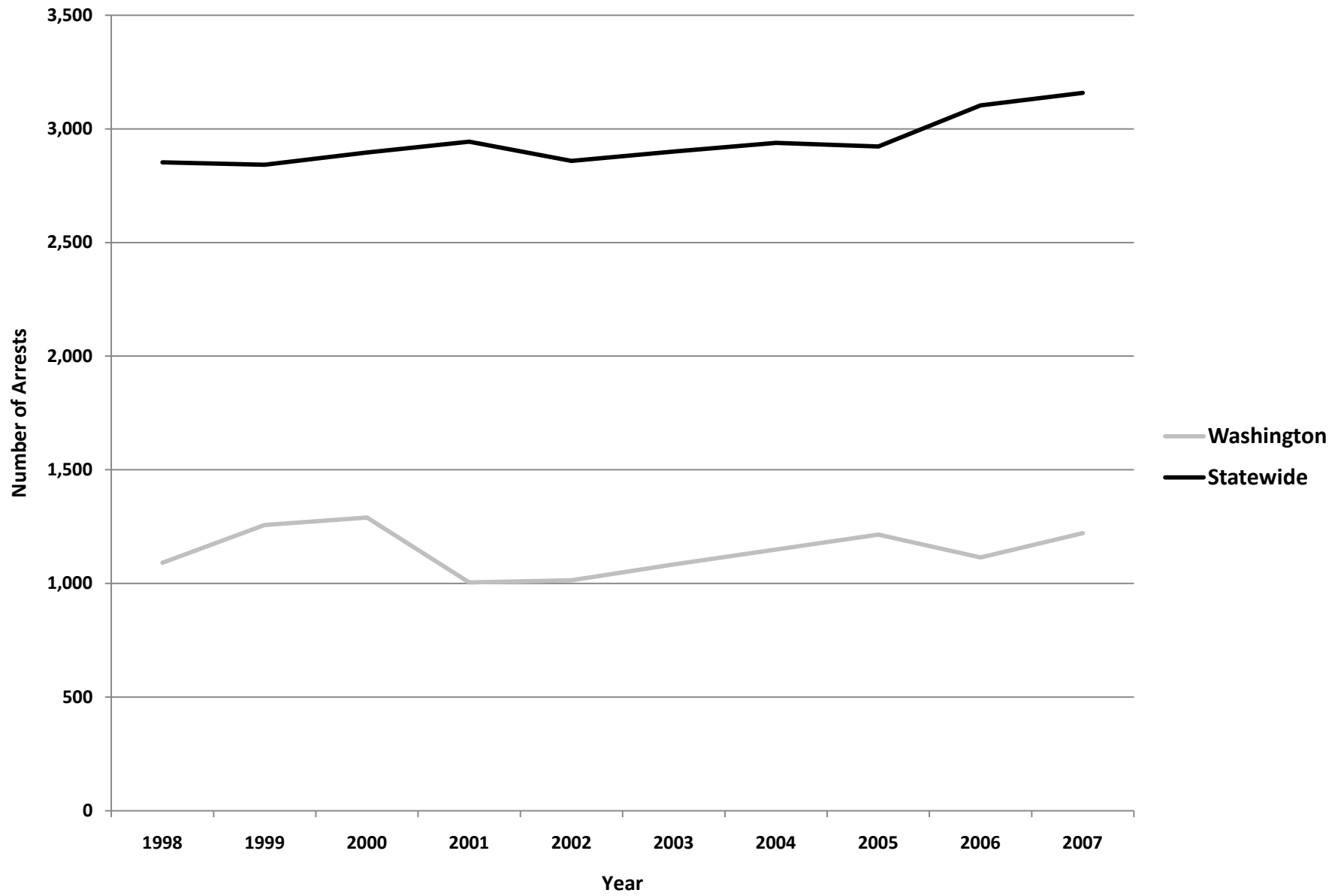
Property Crimes per 1,000 Residents, County Comparisons, 2007 (Total Population)



Washington - Property Crimes per 1,000 Residents (Total Population)



Washington - Adult Arrests vs. Statewide Average



Washington - Adult Crime Statistics (2007)			
	Overall	Male	Female
Adult Arrests 2007	1,221	943	278
5-Year % Change	12.6%	10.4%	20.9%
10-Year % Change	11.9%	7.4%	30.5%
Crime Rates (2007)			
Index Crimes 2007 (per 1,000 pop.)	22.0	Crime Rates are calculated using both Adult & Juvenile Arrests	
5-Year % Change	7.4%		
10-Year % Change	-4.3%		
Violent crimes 2007 (per 1,000 pop.)	1.3		
5-Year % Change	-6.8%		
10-Year % Change	-7.1%		
Property crimes 2007 (per 1,000 pop.)	20.8		
5-Year % Change	9.2%		
10-Year % Change	-3.7%		
Adult Arrests by Type (2007)			
	Adult - Overall	Adult - Male	Adult - Female
Murder & Non-negligent Manslaughter	0	0	0
Manslaughter by Negligence	0	0	0
Forcible Rape	0	0	0
Robbery	0	0	0
Aggravated Assault	15	14	1
Burglary, Breaking & Entering	17	15	2
Larceny-Theft (except Auto Theft)	103	55	48
Motor Vehicle Theft	0	0	0
Other Assaults	102	84	18
Arson	0	0	0
Forgery & Counterfeiting	7	5	2
Fraud	7	1	6
Embezzlement	1	0	1
Stolen Property: Buying, Receiving, Possessing	0	0	0
Vandalism	12	9	3
Weapons: Carrying, Possessing, etc.	3	3	0
Prostitution & Commercialized Vice	0	0	0
Sex Offenses	2	2	0
Drug Abuse Violations	122	84	38
Gambling	0	0	0
Offenses Against Family & Children	5	5	0
Driving Under the Influence	165	130	35
Liquor Laws	36	26	10
Drunkenness	16	15	1
Disorderly Conduct	30	20	10
All Other Offenses (Except Traffic)	578	475	103
Total	1,221	943	278

Washington- Juvenile Crime Statistics (2007)			
	Overall	Male	Female
Juvenile Arrests 2007	76	53	23
5-year % change Juvenile arrests	-54.8%	-58.9%	-41.0%
10-year % change Juvenile arrests	-60.2%	-61.0%	-58.2%
Juvenile Justice System Outcomes			
	Rate	Number	
Referrals	17.74 per 1,000 population	58	
Diversions	82.76 per 100 referrals	48	
Adjudications	100.00 per 100 petitions	30	
Juvenile Arrests by Type (2007)			
	Juvenile Overall	Juvenile Male	Juvenile Female
Murder & Non-negligent Manslaughter	0	0	0
Manslaughter by Negligence	0	0	0
Forcible Rape	0	0	0
Robbery	0	0	0
Aggravated Assault	1	1	0
Burglary, Breaking & Entering	3	3	0
Larceny-Theft (except Auto Theft)	13	4	9
Motor Vehicle Theft	1	1	0
Other Assaults	9	5	4
Arson	0	0	0
Forgery & Counterfeiting	0	0	0
Fraud	0	0	0
Embezzlement	0	0	0
Stolen Property: Buying, Receiving, Possessing	0	0	0
Vandalism	8	8	0
Weapons: Carrying, Possessing, etc.	0	0	0
Prostitution & Commercialized Vice	0	0	0
Sex Offenses	0	0	0
Drug Abuse Violations	2	2	0
Gambling	0	0	0
Offenses Against Family & Children	0	0	0
Driving Under the Influence	3	1	2
Liquor Laws	11	10	1
Drunkenness	5	4	1
Disorderly Conduct	2	2	0
All Other Offenses (Except Traffic)	18	12	6
Curfew & Loitering	0	0	0
Runaways	0	0	0
Total	76	53	23

Referral: Number of juveniles referred to the juvenile justice system.

Diversion: Number of juveniles formally diverted by a juvenile community corrections officer (JCCO).

Adjudication: Number of juveniles found guilty by a court of law.

ACKNOWLEDGEMENTS

Author

William Ethridge, Muskie School Public Policy & Management Graduate Student

Research Supervisor

Mark Rubin, Research Associate, Muskie School of Public Service

SAC Staff Contributor (Juvenile Statistics)

Becky Noreus, Research Analyst, Muskie School of Public Service

Editors

Carmen Dorsey, Director, Muskie School of Public Service Justice Policy Program

George Shaler, Research Associate, Muskie School of Public Service

Format and Design

Sheri Moulton, Project Assistant, Muskie School of Public Service

Special thanks to the Maine Statistical Analysis Center Advisory Group

Roxy Hennings, CQI Director, Division of Juvenile Services, Maine Department of Corrections

Denise Lord, Deputy Commissioner, Maine Department of Corrections

Janet Joyeux, Assistant to the Commissioner, Maine Department of Public Safety

Barry Stoodley, Associate Commissioner of Juvenile Services, Maine Department of Corrections

Paul Vestal, Chair, Maine Criminal Justice Commission

Sherry Wilkins, Court Management Analyst, Maine Administrative Office of the Courts

Attribution

The Maine County Profile Justice Data was created under the auspices of the State Justice Statistics Program, Bureau of Justice Statistics (BJS), Department of Justice (DOJ). Funding was provided by BJS Grant 2008-BJ-CX-K034. The opinions, findings, and conclusions expressed in this publication are those of the authors and do not necessarily reflect the view of the Department of Justice.

All data included in the criminal justice highlights and the corresponding charts and tables was derived from the [2008 Maine Crime and Justice Data Book](#) and the [Maine Department of Public Safety](#) and the [Maine Department of Corrections Juvenile Recidivism Report](#).

Updated: 12/09

ABOUT THE UNIVERSITY OF SOUTHERN MAINE (USM)
MUSKIE SCHOOL OF PUBLIC SERVICE

The USM Muskie School of Public Service educates leaders, informs public policy, and strengthens civic life through its graduate degree programs, research institutes and public outreach activities. By making the essential connection between research, practice, and informed public policy, the School is dedicated to improving the lives of people of all ages, in every county in Maine and every state in the nation.

*This report is available on the Justice Policy Program Website:
<http://muskie.usm.maine.edu/justiceresearch>*